

Date 30 January 2017
Your reference WOZ150011
Our reference ECN-WIND-2017-017

P.O. Box 1, 1755 ZG Petten, The Netherlands
Netherlands Enterprise Agency (RVO.nl)
Croeselaan 15
3521 BJ UTRECHT
THE NETHERLANDS

Contact
T +31 224 56 4086
verhoef@ecn.nl

Subject Supply of Meteorological and Oceanographic data for Borssele Wind Farm Zone Period 22 November – 26 December 2016 (Lot1)

Dear Sir/Madam,

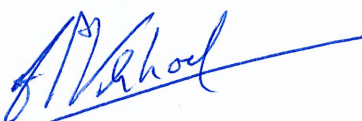
The following two Meteorological and Oceanographic data reports produced by Fugro OCEANOR AS for Lot1 measurement campaign have been reviewed by ECN Wind Energy:

1. Supply of Meteorological and Oceanographic data at Borssele Wind Farm Zone (BWFZ)
Monthly Progress Report : 22 November – 26 December 2016.
Reference No: C75339_MPR14_R1
2. Supply of Meteorological and Oceanographic data at Borssele Wind Farm Zone (BWFZ)
Validation report : 22 November – 26 December 2016.
Reference No: C75339_VAL14_R1

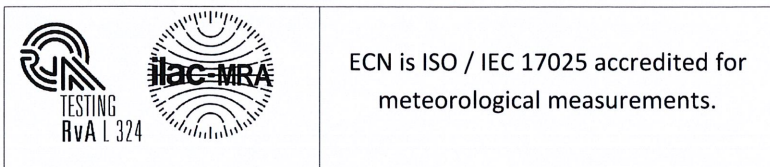
ECN has found that the above referenced reports provide a sufficient detail for potential users of the provided data to perform analysis.

Please note that the provided dataset (Period 14 , Version 2 dd. 20170127) can be retrieved via the website : <http://offshorewind.rvo.nl/studiesborssele>. It should also be noted that in the documents it is mentioned that additional Water Level Sensor data will become available after retrieving the sensor. This data is at the present moment not available via the website and is also not part of this review. Additional actions need to be taken after the data becomes available.

Yours sincerely,



Hans Verhoef
Project Leader Measurements



Petten

Postbus 1
1755 ZG Petten

Westerduinweg 3
1755 LE Petten
The Netherlands

T +31 88 5 154 949
F +31 88 5 154 480
www.ecn.nl

VAT NL001752625B01
Trade register 41151233

THE NETHERLANDS ENTERPRISE AGENCY (RVO)

**Supply of Meteorological and Oceanographic data at Borssele Wind Farm Zone (BWFZ)
Monthly Progress Report: 22 November - 26 December 2016**

**Reference No: C75339_MPR14_R1
27 January 2017**

**Fugro OCEANOR AS
Pirsenteret, P.O. Box 1224, Sluppen, N-7462 Trondheim, Norway
Tel: +47 73545200 Fax: +47 73525033, e-mail: trondheim@oceanor.com**



Supply of Meteorological and Oceanographic data at Borssele Wind Farm Zone (BWFZ): C75339_MPR14_R1				
Rev	Date	Originator	Checked & Approved	Issue Purpose
0	24.01.2017	Ola Storås	Arve Berg	Draft report.
1	27.01.2017	Ola Storås	Arve Berg	Final report

Rev 1 – 27 January 2017	Originator	Checked & Approved
Signed:		

This report is not to be used for contractual or engineering purposes unless the above is signed where indicated by both the originator of the report and the checker/approver and the report is designated 'FINAL'.

TABLE OF CONTENT

SUMMARY	1
1. INTRODUCTION.....	2
2. Instrumentation and measurement configuration	2
3. Summary of activities	7
3.1 Buoy operation.....	7
3.2 Health, Safety and Environment.....	7
4. Results	8
4.1 Summary of results and data return	8
4.2 Presentation of the received data	10
4.2.1 Meteorological data	10
4.2.2 Wave data	12
4.2.3 Wind profile data.....	15
4.2.4 Current velocity profile data.....	27
4.2.5 Water level and bottom temperature data	33
Appendix A Deployment sheet	1

SUMMARY

The Seawatch Wind Lidar buoy is deployed at the Borssele Wind Farm Zone (BWFZ). This monthly report summarizes the activities during the period 22 November - 26 December 2016, and presents time series plots of the data collected during this period.

The buoy was first deployed on 11th June 2015 at 15:55 UTC, and a bottom mounted tide gauge (WLR) was deployed at 16:15 UTC on the same day. In total 3 different buoys has been used for the measurements. In the whole 2015 and until 19th January 2016 the Seawatch Wind Lidar buoy WS149 was used for the measurements. On the 12th February 2016 the SW Wind Lidar buoy WS157 was deployed at the same position. This buoy was used for the measurements until 20th July 2016 and was then swapped with SW Wind Lidar buoy WS156. This buoy was then used until 12th December 2016 when it was swapped with SW Wind Lidar buoy WS157.

Due to one major and a few minor gaps in the time series it took 34.229 days to collect 30.5 days of good wind profile data for the present period.

The major gap in the wind data happened because the buoy run out of fuel on 9th December. Refuelling (buoy swapping) was planned carried out on the 6th December and vessel was booked. However, due to an unexpected incident on another RVO project (HKZ), which was considered to be more urgent, the vessel and the Fugro OCEANOR field engineer, was redirected to work on the other project. Thus the planned swapping was postponed and unfortunately the buoy run out of fuel before the swapping could take place.

1. INTRODUCTION

The Seawatch Wind Lidar buoy with serial no. WS149 was first deployed at the Borssele Wind Farm Zone (BWFZ) in the Dutch sector of the North Sea on 11 June 2015 at 15:55 with the bottom mooring weight at position 51° 42.41388' N, 3° 2.07708' E. The water depth at this location is approximately 30 m. A bottom mounted water level recorder (WLR) was deployed near the buoy at position 51° 42.4362' N, 3° 02.1030' E at the same time, transmitting data to the buoy in real time data via an acoustic link. Unfortunately the acoustic link broke down on 8th July 2015 so water level data are no longer received in real time, but the data are stored in the WLR for download when it is recovered.

A spare WLR with internal data storage only was deployed on 18th December 2015 to ensure water level data recovery.

In total 3 different buoys has been used for the measurements. In the whole 2015 and until 19th January 2016 the Seawatch Wind Lidar buoy WS149 was used for the measurements. The Lidar on Buoy WS149 stopped working on 26 December 2015 due to a technical problem with its Lidar power switch. After a long period of unworkable weather conditions, and some delay due to vessel unavailability, the buoy was recovered for repair on 19 January 2016. The root cause of the problem was found and measures were taken to prevent it from happen again.

On the 12th February 2016 the SW Wind Lidar buoy WS157 was deployed at the same position at 13:00. This buoy was in successful operation in position until recovery for fuel refill on 20th July 2016 and was then swapped with SW Wind Lidar buoy WS156 at 10:00 UTC. This buoy was then used until 12th December 2016 when it was swapped with SW Wind Lidar buoy WS157.

All the buoys used have been pre-deployment validated at Fugro OCEANOR test site according to the Carbon Trust OWA roadmap, approved by DNV-GL (reports are published on RVO web page for offshore wind).

This reporting period extends from 22 November 2016 at 14:20 until 26 December at 19:50, and contains 30.5 days of wind profile data. The time reference used in this report is UTC.

2. Instrumentation and measurement configuration

The buoy is a Seawatch Wind Lidar Buoy based on the original Seawatch Wavescan buoy design with the following sensors:

- Wavesense: 3-directional wave sensor
- Xsens 3-axes motion sensor
- Gill Windsonic M acoustic wind sensor
- Vaisala PTB330A air pressure sensor
- Vaisala HMP155 air temperature and humidity sensor
- Nortek Aquadopp 600kHz current profiler.
- ZephIR 300S Lidar.

An independent self-recording Aanderaa SeaGuard WLR tide gauge is located on the bottom. The WLR transmits data to the buoy via an acoustic link.

The buoy with mooring as deployed is presented in Figure 2.1, including the mooring for the WLR.

The measurement setup is detailed in Table 2-1. Details of sensor types and serial number can be found in Appendix A.

Table 2-1 Configuration of measurements by the Seawatch Wind Lidar buoy at Borssele Wind Farm Zone (BWFZ).

Instrument type	Sensor height (m)	Parameter measured	Sample height ²⁾ (m)	Sampling interval (s)	Averaging period (s)	Burst interval (s)	Transmitted?
Wavesense 3	0	Heave, pitch, roll, heading	0	0.5	Time series duration: 1024 s	600	No
		Sea state parameters (1)	0	600	1024	600	Yes
Xsens		Heave, east, north acceleration, q0, q1, q2, q3 (attitude quaternion)	0	0.5	N/A	3600	No
Gill Windsonic M	4.1	Wind speed, wind direction	4.1	1	600	600	Yes
Vaisala PTB330A	0.5	Air pressure	0.5	30	60	600	Yes
Vaisala HMP155	4.1	Air temperature Air humidity	4.1	5	60	600	Yes
Nortek Aquadopp	-1	Current speed and direction profile, water temperature (at 1 m depth)	-4 -6 ... -30 (14 levels)	N/A	600	600	Yes
ZephIR 300S Lidar	2	Wind speed and direction at 10 heights (The 11 th level, the so called reference level which is not configurable, is also located at 40 m and referred to as 40.0 Ref.)	30.0 40.0 40.0 ref 60.0 80.0 100.0 120.0 140.0 160.0 180.0 200.0	$\approx 17.4 \text{ s}^{1)}$	600	600	Yes
Aanderaa WLR (SeaGuard) via acoustic link	-30	Water pressure Temperature	-30	600	60	600	Yes ³⁾

¹⁾ This is the approximate time between the beginning of one sweep of the profile and the next one, the interval may vary slightly. The ZephIR sweeps one level at a time beginning at the lowest one, and after the top level has been swept it uses some time for calculations and re-focusing back to the lowest level for a new sweep.

²⁾ Height relative to actual sea surface. The depth of the WLR is an approximate number.

³⁾ The WLR data are not transmitted after 8 July 2015 due to failure of the acoustic link. An additional self-contained WLR was deployed 18 December 2015 to ensure data recovery.



Table 2.2 Definitions of wave parameters presented in this report

H	Individual wave height
Hmax	= Max(H): Height of the highest individual wave in the sample, measured from crest to trough
m0, m1, m2, m4, m-1, m-2	Moments of the spectrum about the origin: $\int f^k S(f)df$ where $S(f)$ is the spectral density and the wave frequency, f , is in the range 0.04 - 0.50 Hz
Hm0	Estimate of significant wave height, H_s , $Hm0 = 4\sqrt{m0}$
Tp	Period of spectral peak = $1/f_p$, The frequency/period with the highest energy
Tm01	Estimate of the average wave period; $Tm01 = m0/m1$
Tm02	Another estimate of the average wave period; $Tm02 = \sqrt{\frac{m0}{m2}}$
ThTp	Mean wave direction at the spectral peak ("The direction of most energetic waves")
Mdir	Wave direction averaged over the whole spectrum
	Directions are given in degrees clockwise from north, giving the direction the waves come from. (0° from north, 90° from east, etc.)

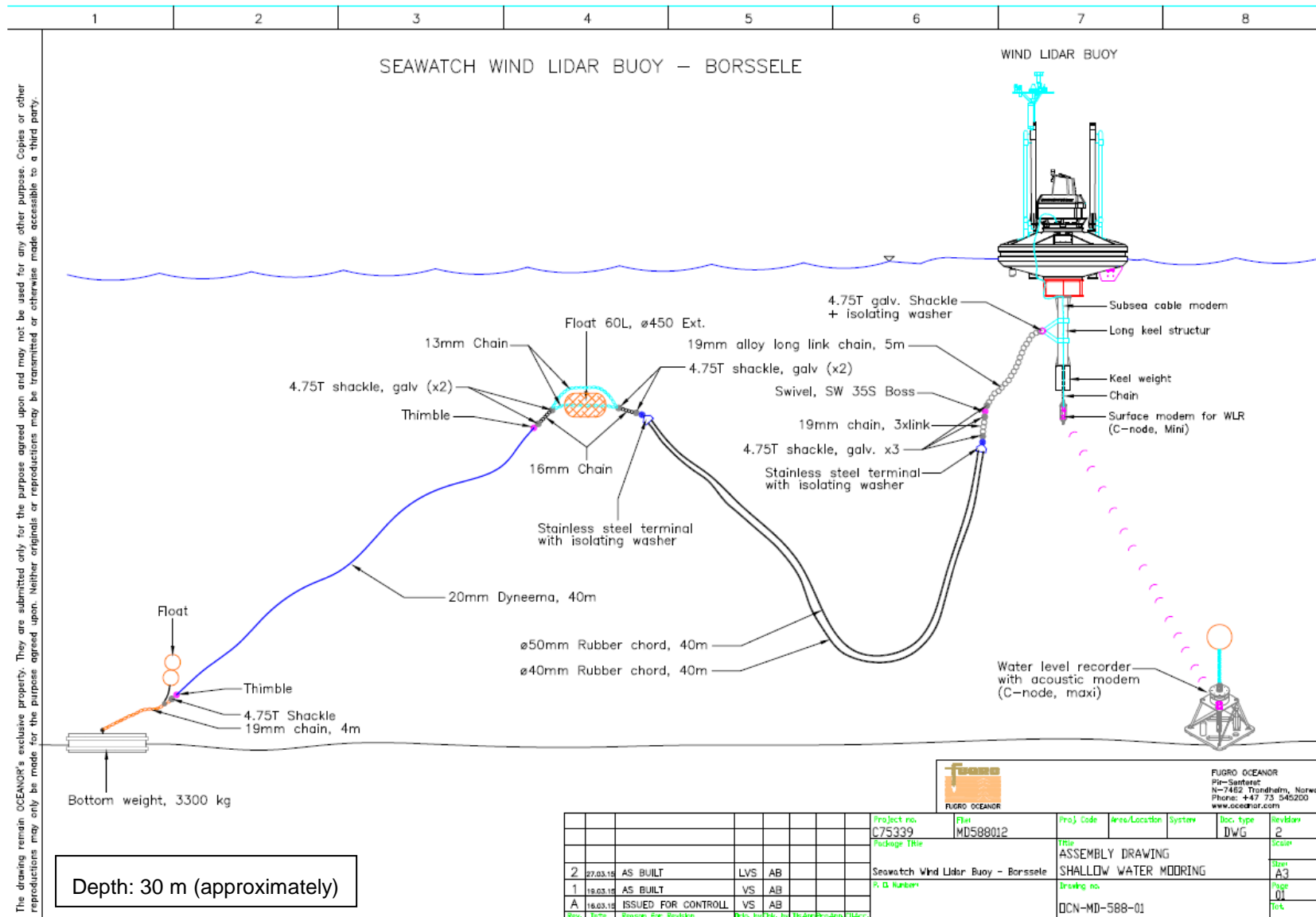


Figure 2.1 Mooring design for the Wind Lidar Buoy and Seaguard WLR bottom unit as deployed at Borssele Wind Farm Zone (BWFZ) 11 June 2015.

3. Summary of activities

3.1 Buoy operation

The Seawatch Wind Lidar buoy with serial no. WS149 and a bottom mounted Water Level Recorder (SeaGuard WLR) were deployed at the Borssele Wind Farm Zone in the Dutch sector of the North Sea on 11 June 2015. The buoy was deployed at 15:55 with the bottom mooring weight at position 51° 42.41388' N, 3° 2.07708' E. A bottom mounted WLR was deployed at position 51° 42.4362' N, 3° 02.1030' E. The WLR transmitted data to the buoy in real time data via an acoustic link¹. The sounder depth was recorded as approximately 30 m.

The Lidar on buoy WS149 stopped working on 26 December 2015, and after a long period of mainly unworkable weather conditions, and some delay due to vessel unavailability, the buoy was recovered for repair on 19 January 2016. The root cause of the problem was found and measures were taken to prevent it from happen again.

The buoy was replaced by the spare buoy WS157 which was deployed at exactly the same position on 12 February 2016. These operations were carried out using the Multisalvor 3.

The spare buoy WS157 was swapped with WS156 on 20 July 2016. The WS156 was previously used in at the Borssele Wind Farm Zone (BWFZ) at position labelled "lot 2" and recovered for service and fuel refill 7 July 2016. This buoy was then used until 12th December 2016 when it was swapped with SW Wind Lidar buoy WS157. Deployment sheet for WS 156 and WS157 is given in Appendix A.

An attempt to recover the WLR module was made on the July survey, but no signal/ping was received from the module. The WLR was therefore not recovered

3.2 Health, Safety and Environment

There were no incidents, near misses or accidents in connection with the buoy swap operation on 12th December 2016.

¹ The acoustic link failed and the transmissions of water pressure data from the WLR stopped on 8th July 2015. It is expected that the internal recording of data in the WLR will continue undisturbed until it is recovered.



4. Results

4.1 Summary of results and data return

The buoy transmitted data continuously from all sensors from 22 November 2016 at 14:20 until 26 December 2016 at 19:50, with the exception of one major and some minor gaps. The major gap in the wind data happened because the buoy run out of fuel on 9th December. Refuelling (buoy swapping) was planned carried out on the 6th December and vessel was booked. However, due to an unexpected incident on another RVO project (HKZ), which was considered to be more urgent, the vessel and the Fugro OCEANOR field engineer, was redirected to work on the other project. Thus the planned swapping was postponed and unfortunately the buoy run out of fuel before the swapping could take place.

There are in addition a few short gaps in the Lidar data where the received data are replaced by the “missing data” flag at all heights. The data gaps occurred on 23rd of November and 3rd of December. Due to the gaps it took 34.229 days to collect 30.5 days of good wind profile data².

The air temperature and humidity sensor seems to have an issue with repeating values in the measurement period, although much less than experienced earlier. These values have been removed from the data set causing it to have a lower availability for these parameters.

The number of hours of good data compared to the total obtainable hours of data is presented in Table 4-1.

Table 4-1 Data return during the period 22 November 2016 at 14:20 - 26 December at 19:50

Measurement device	Length of data period (days)	Length of data set (days)	Average availability (%)
Lidar wind profile sensor	34.229	30.500	89.105
Wave sensor	34.229	33.778	98.682
Current velocity and direction sensor	34.229	33.965	99.229
Atmospheric pressure sensor	34.229	33.924	99.108
Air temperature sensor	34.229	27.439	80.162
Water Level Sensor *	34.229	0	0.00

* The real time transmitted water level data are unexpectedly lost due to breakdown of the acoustic link. However, the complete data series will be recovered when the instrument is recovered.

Statistical summary of the collected date is given in table 4.2 - 4.4.

² Additional gaps in the real time transmitted Turbulence Intensity (TI) data are caused by breaks in the satellite dial-up transmission link. The data that were not received in real time are stored internally in the buoy and will be downloaded from the buoy when it is recovered.

Table 4.2 Average and maximum measured values of wind speeds: 10 min mean and gust from the Gill sensor at 4 m height, 10 min mean speeds at 10 levels from the Lidar. (Heights referred to the sea surface.)

Instrument	Parameter	Height m	Average m/s	Maximum m/s
Gill Windsonic	10 min mean wind speed	4	7.15	14.59
	3-second gust	4	9.06	20.51
ZephIR Lidar	10 min mean wind speed	30	8.39	18.93
		40	8.57	19.10
		60	8.81	19.69
		80	9.00	21.62
		100	9.15	22.56
		120	9.28	22.21
		140	9.41	23.85
		160	9.54	26.25
		180	9.61	27.42
		200	9.74	28.24

Table 4.3 Minimum, average and maximum measured values of meteorological data, wave data and sea surface temperature (at 1 m depth).

Parameter	Unit	Height	Minimum	Average	Maximum
Air Pressure	hPa	1	1006.74	1024.85	1035.25
Air Temperature	°C	4	3.62	8.50	11.44
Humidity	% R.H.	4	37.17	82.88	98.51
hm0	m	0		1.05	2.75
hmax	m	0		1.48	5.19
thmax	s	0		5.77	
tm01	s	0		4.33	6.25
tm02	s	0		4.08	5.86
tp	s	0		5.44	9.77
Water Temperature	°C	-1		10.48	11.61

Table 4.4 Average and maximum measured values of current speed from 4 m to 30 m depth.

Depth m	Average cm/s	Maximum cm/s
4	45.22	89.1
6	50.27	94.9
8	50.21	93.7
10	49.94	93.7
12	50.26	93.7
14	49.73	91.4
16	49.12	91.4
18	48.41	89.1
20	47.41	89.1
22	46.77	87.9
24	45.68	86.7
26	44.41	83.2
28	41.69	76.2
30	30.21	75.0

4.2 Presentation of the received data

The following presentations show good data transmitted from the buoy via Iridium satellite during the period 22 November 2016 at 14:20 - 26 December at 19:50.

4.2.1 Meteorological data

The following plots present the air pressure, air temperature, and sea surface temperature.

The air temperature and humidity sensor had some problem to update the values of temperature and humidity for a few 10-minute periods at a time, causing gaps in the data series.

The water temperature sensor is part of the current profiler, the AquaDopp, and data recovery for water temperature is the same as for current profile data.



Figure 4.1 Time series plots of air pressure (upper panel), air and water temperature (lower panel), 22 Nov - 4 Dec 2016.

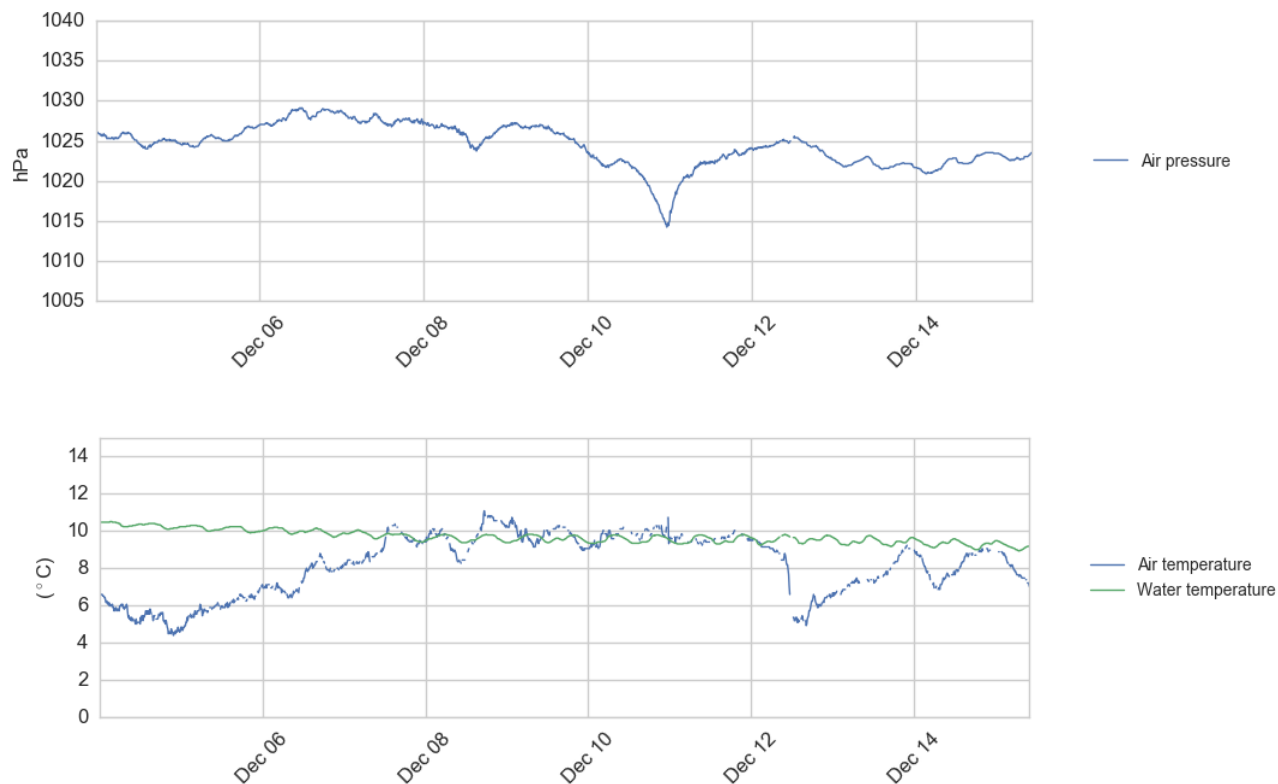


Figure 4.2 Time series plots of air pressure (upper panel), air and water temperature (lower panel), 4 - 15 Dec 2016.

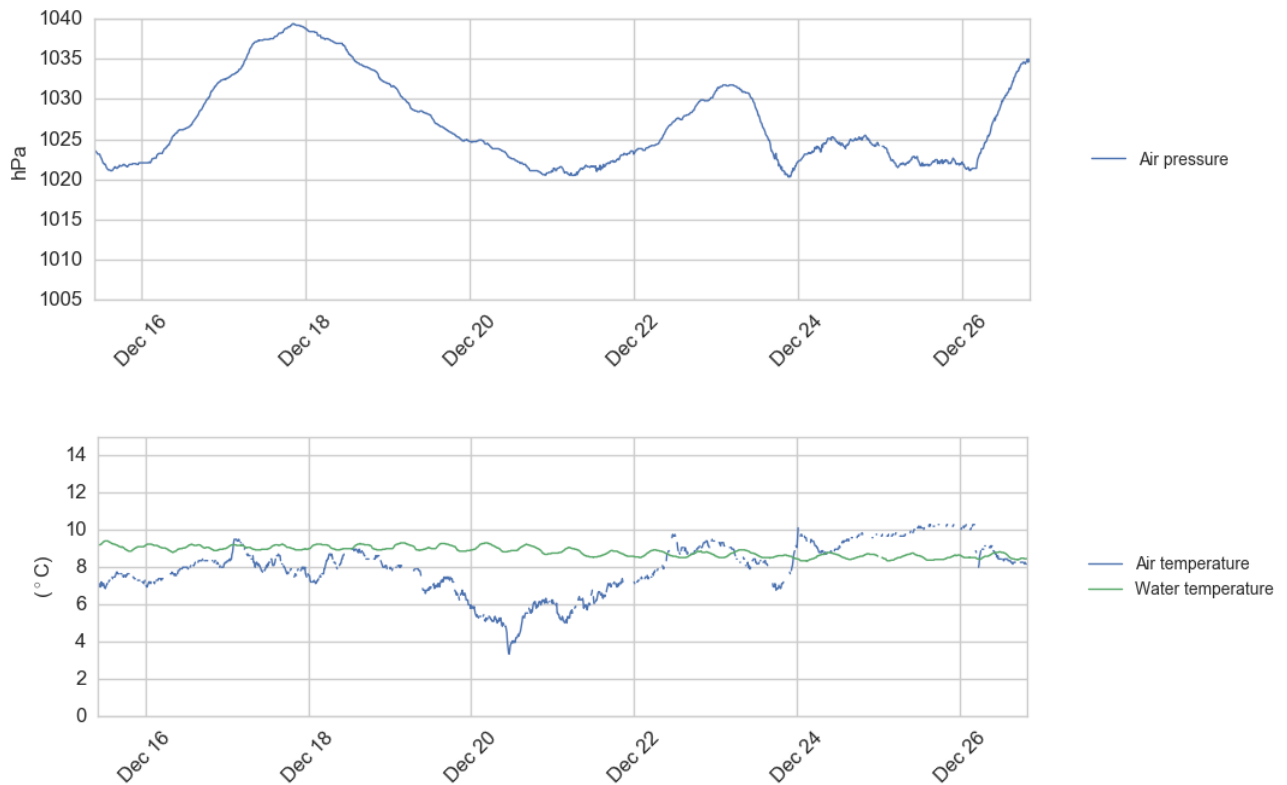


Figure 4.3 Time series plots of air pressure (upper panel), air and water temperature (lower panel), 15 - 26 Dec 2016.

4.2.2 Wave data

The next plots present wave height, period and direction. The wave sensor has generally functioned well. There are only minor data gaps on 23rd of November and 3rd of December.

The highest significant wave height (Hm0) measured in this period was 2.75 m from a north-westerly direction (~310°) at 26th of December. Wind speeds of around 17 m/s from north-west (~300°) were observed in the profile prior to the highest sea states. The highest single wave with a height of 5.19 m was also observed on 24th of November.

The variations in wave height agree well with the wind speeds in general. The average wave period parameters Tm01 and Tm02 show semidiurnal variations which can be explained by the shift in frequency when the waves are travelling along with or opposing the current direction, since the tidal current direction varies in a semi-diurnal pattern.

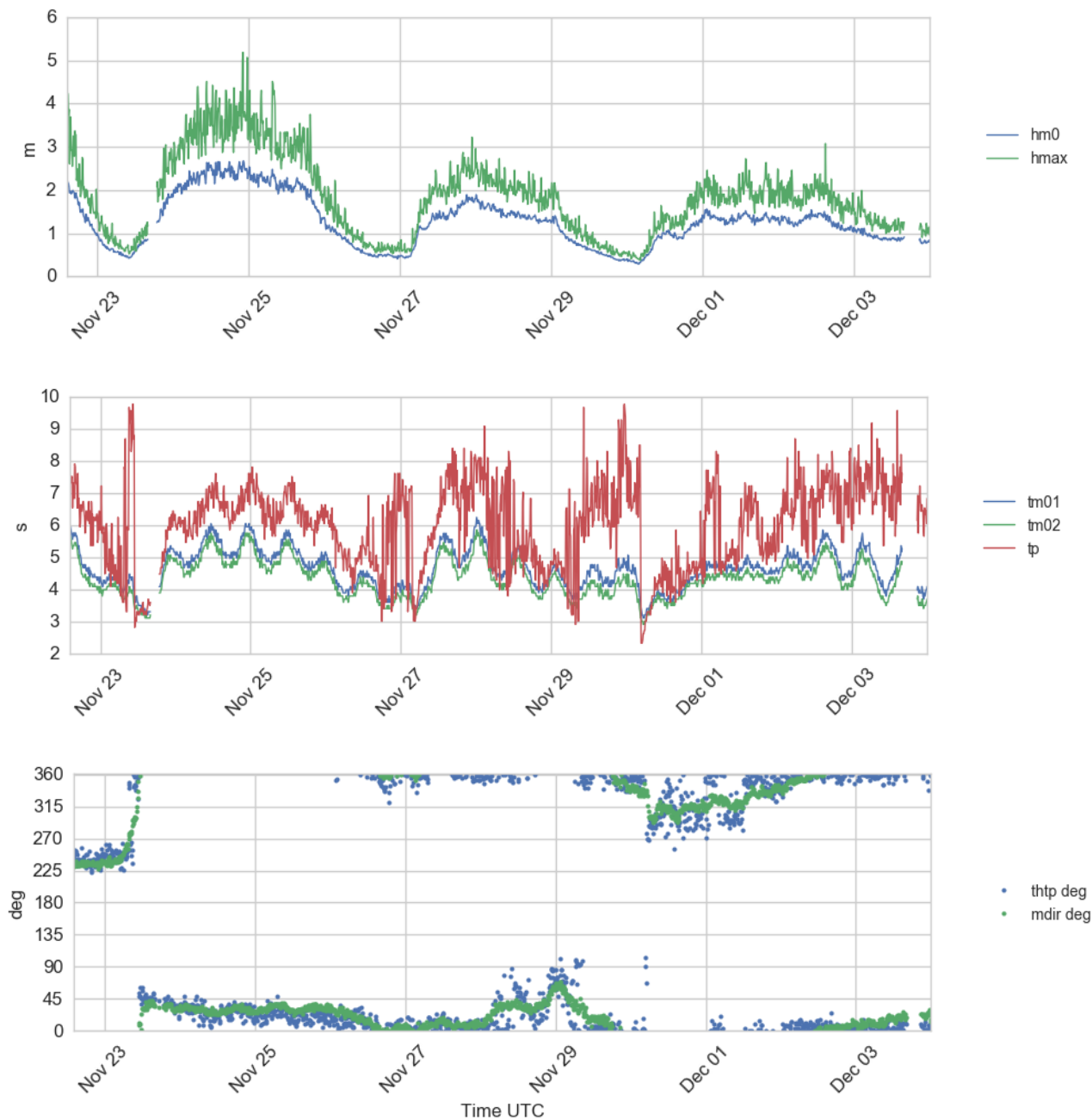


Figure 4.4 Time series plots of wave height (Hm0 and Hmax) (upper panel), wave period (Tm01, Tm02 and Tp) (second panel), and wave direction (ThTp and Mdir) (lower panel), 22 Nov - 4 Dec 2016.

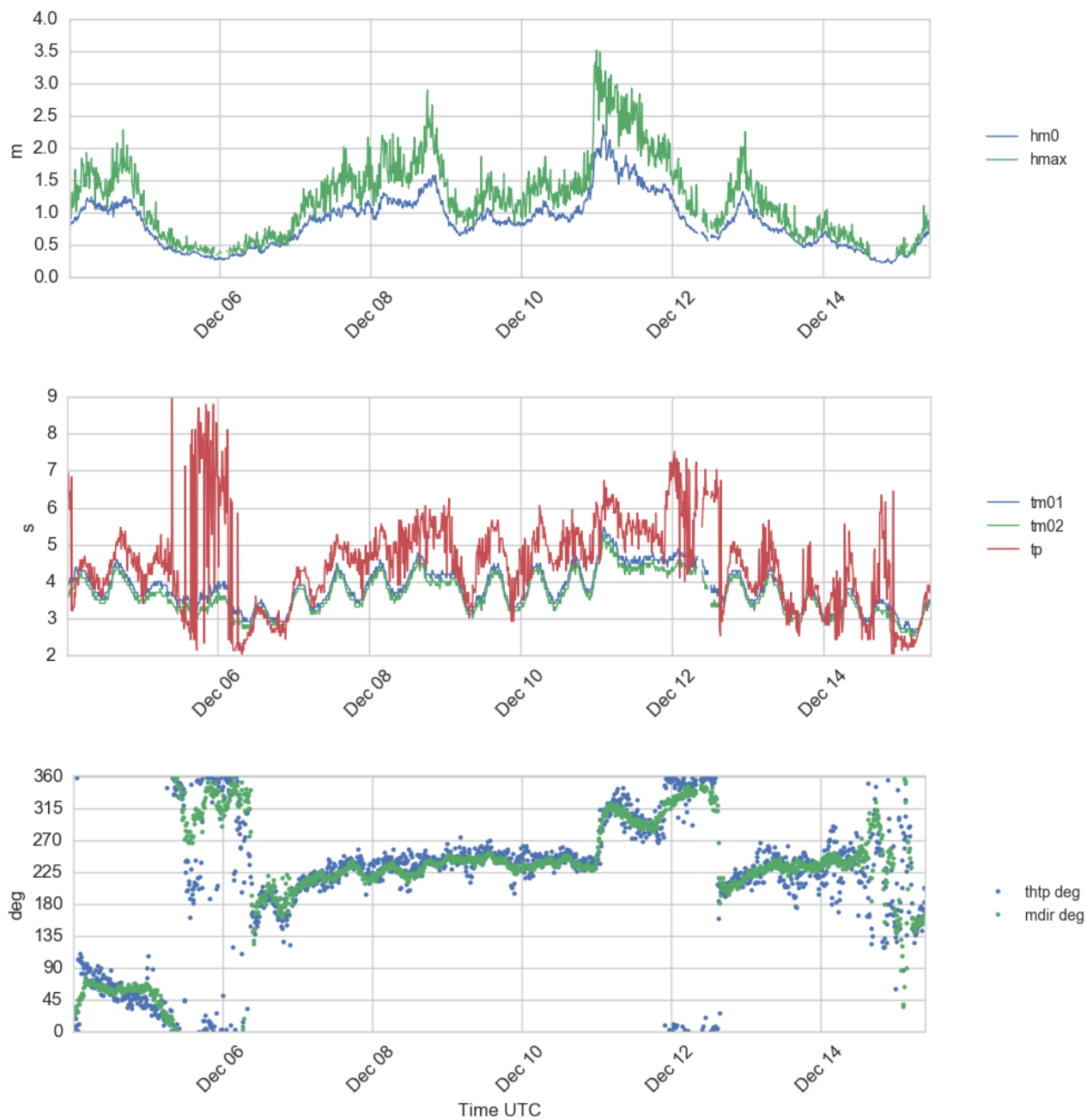


Figure 4.5 Time series plots of wave height (Hm0 and Hmax) (upper panel), wave period (Tm01, Tm02 and Tp) (second panel), and wave direction (ThTp and Mdir) (lower panel), 4 - 15 Dec 2016.

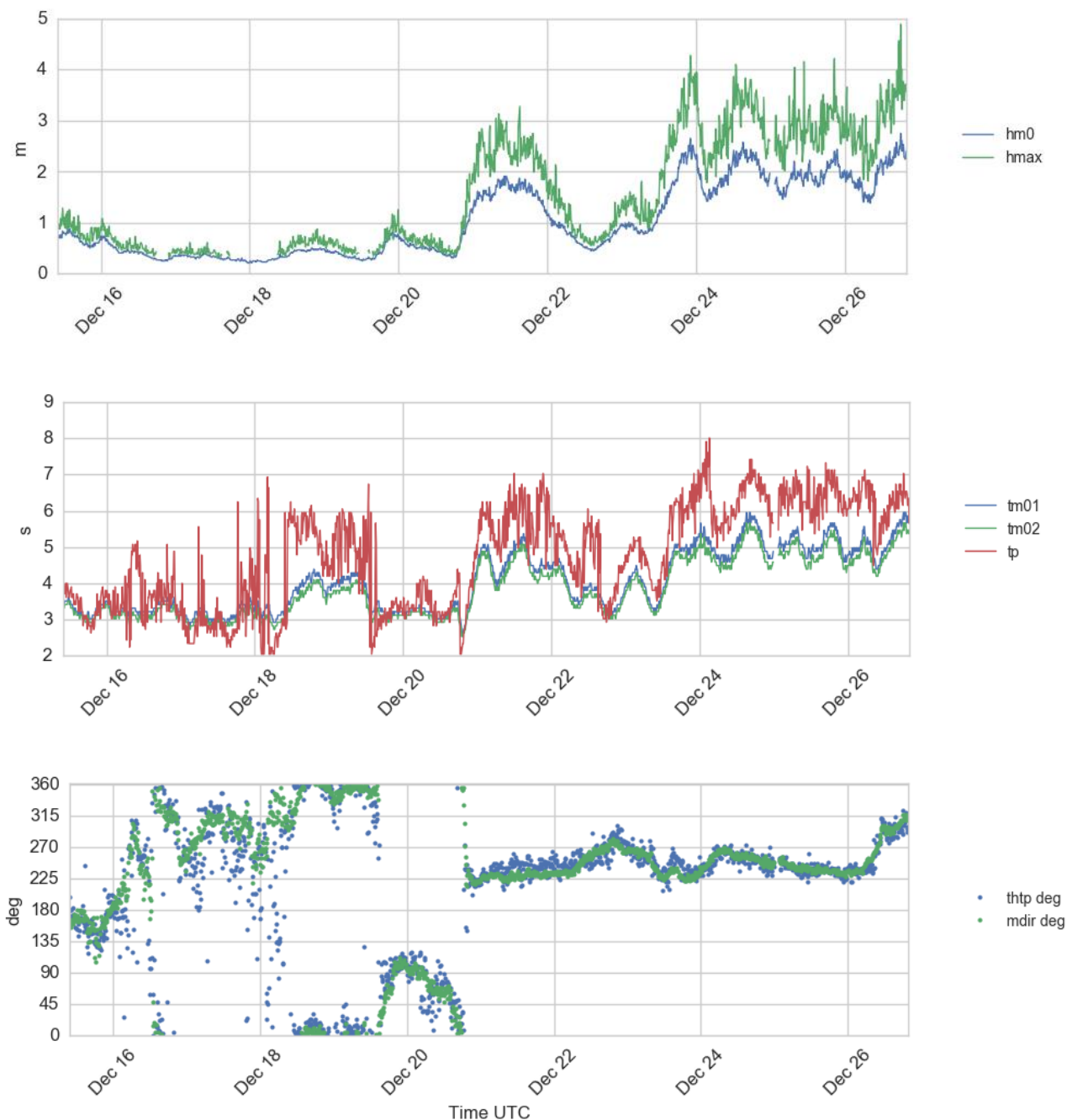


Figure 4.6 Time series plots of wave height (Hm0 and Hmax) (upper panel), wave period (Tm01, Tm02 and Tp) (second panel), and wave direction (ThTp and Mdir) (lower panel), 15 - 26 Dec 2016.

4.2.3 Wind profile data

In the wind and wave direction plots 0° and 360° indicate direction from the north.

The following plots show the wind speed and direction data from the Gill wind sensor mounted at 4 m height on the buoy mast. The data from the Gill sensor are generally good. In this period 10 min mean wind speeds up to 14.6 m/s were measured 11th December 2016 and gusts up to 20.5 m/s were measured at 4 m above the sea surface also on 11th December 2016.

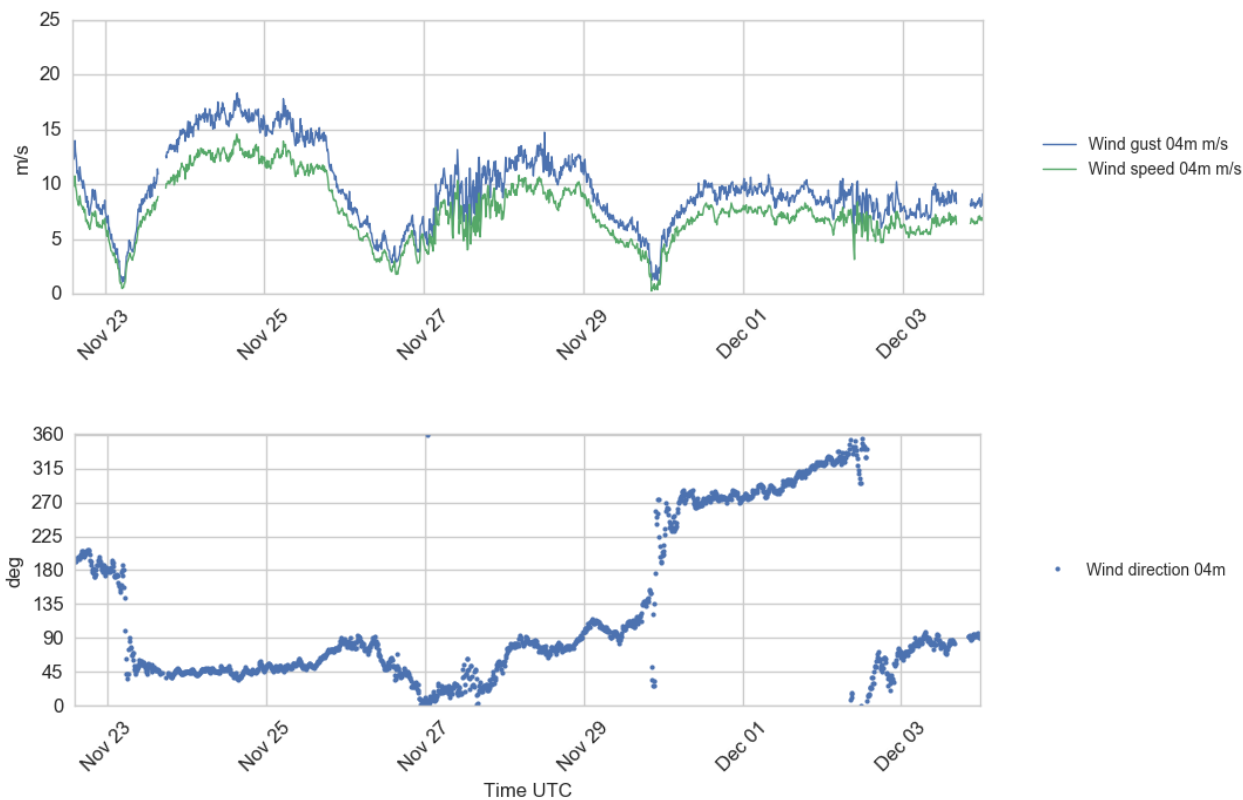


Figure 4.7 Plots of wind speed and gust (upper), and wind direction (lower) at 4 m a.s.l., 22 Nov - 1 Dec 2016.

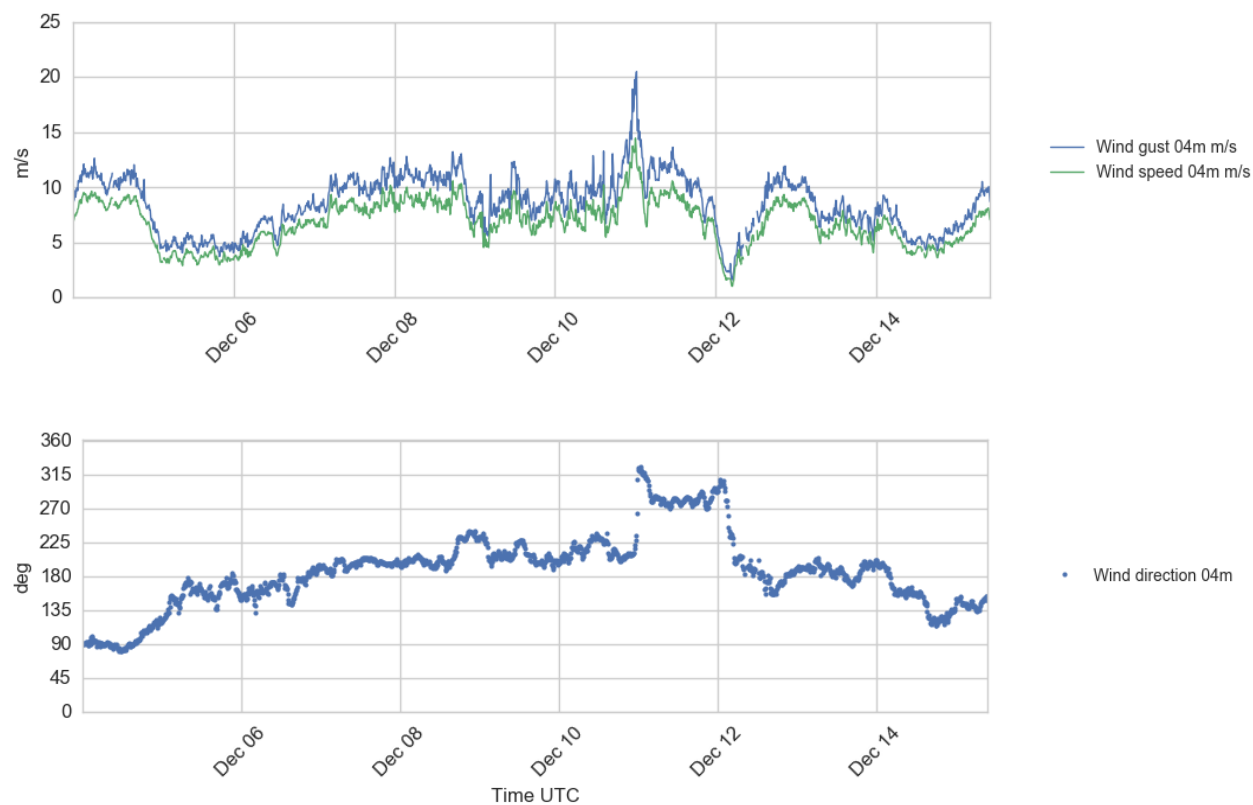


Figure 4.8 Plots of wind speed and gust (upper), and wind direction (lower) at 4 m a.s.l., 4 - 15 Dec 2016.

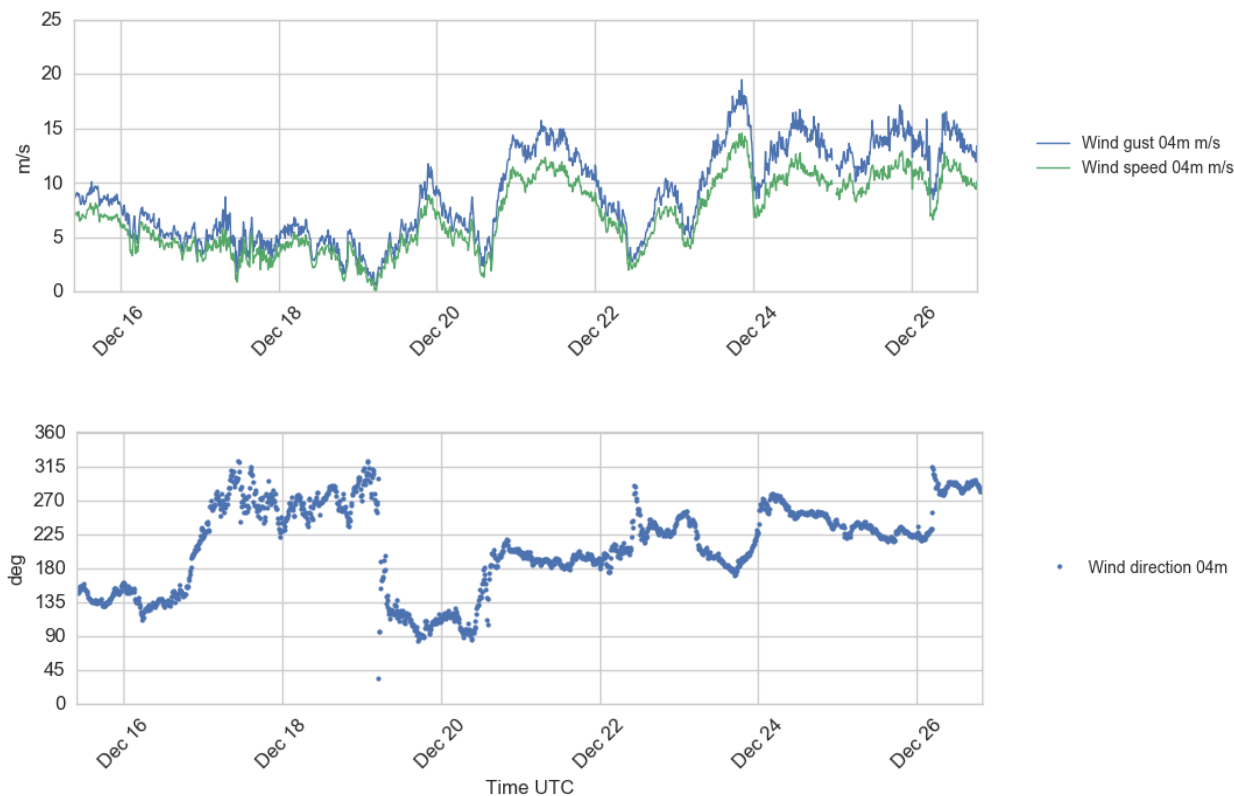


Figure 4.9 Plots of wind speed and gust (upper), and wind direction (lower) at 4 m a.s.l., 15 - 26 Dec 2016.

The wind profiling data from the Lidar are presented in the following plots showing the time series of 10 min. mean wind for each individual level. Plots of the derived parameters Inflow Angle and Turbulence Intensity³ are also presented.

The Inflow Angle (IA) is the angle of the 3-dimensional wind vector based on the ten minute averaged values of the horizontal and vertical wind velocity components. IA can be positive or negative; a positive IA means that the wind vector has an upward directed vertical component. The Turbulence Intensity (TI) is defined as $TI = \sigma/\bar{u}$ where σ is the standard deviation and \bar{u} is the mean of the wind speed for a 10-min period. Note that this definition frequently gives relatively high values in situations with low but variable wind speed.

The highest observed horizontal mean wind speed during this month varies from 8.4 m/s at 30 m to 9.7 m/s at 200 m above the surface. The maximum winds were measured on 23rd December 2016. The wind speed then varied between 18.9 m/s (at 30 m) to 28.2 m/s (at 200 m). The wind direction was changing from south-west to west in that period.

³ Turbulence Intensity is transmitted using the Iridium Dial-up data transfer mode, separately from the horizontal wind speed, direction and inflow angle which are transmitted as short burst data messages. There are a few gaps in the TI data at times when the dial-up transfer failed, while the wind speed, direction and IA were received normally.

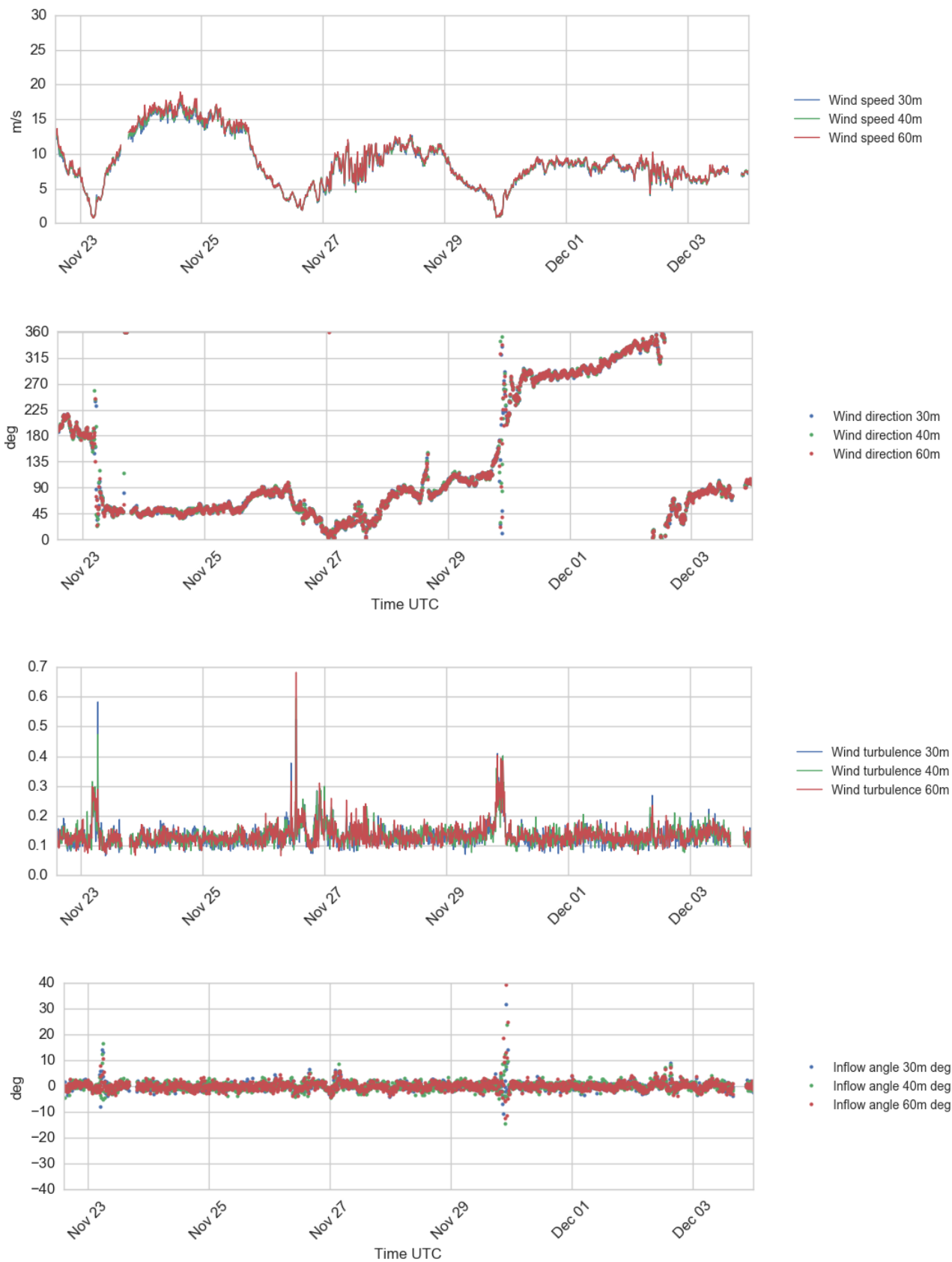


Figure 4.10 Plots of wind profile data, 30 – 60 m a.s.l., 22 Nov - 4 Dec 2016.

From top to bottom: Wind speed, Wind direction, Turbulence Intensity, and Inflow Angle.

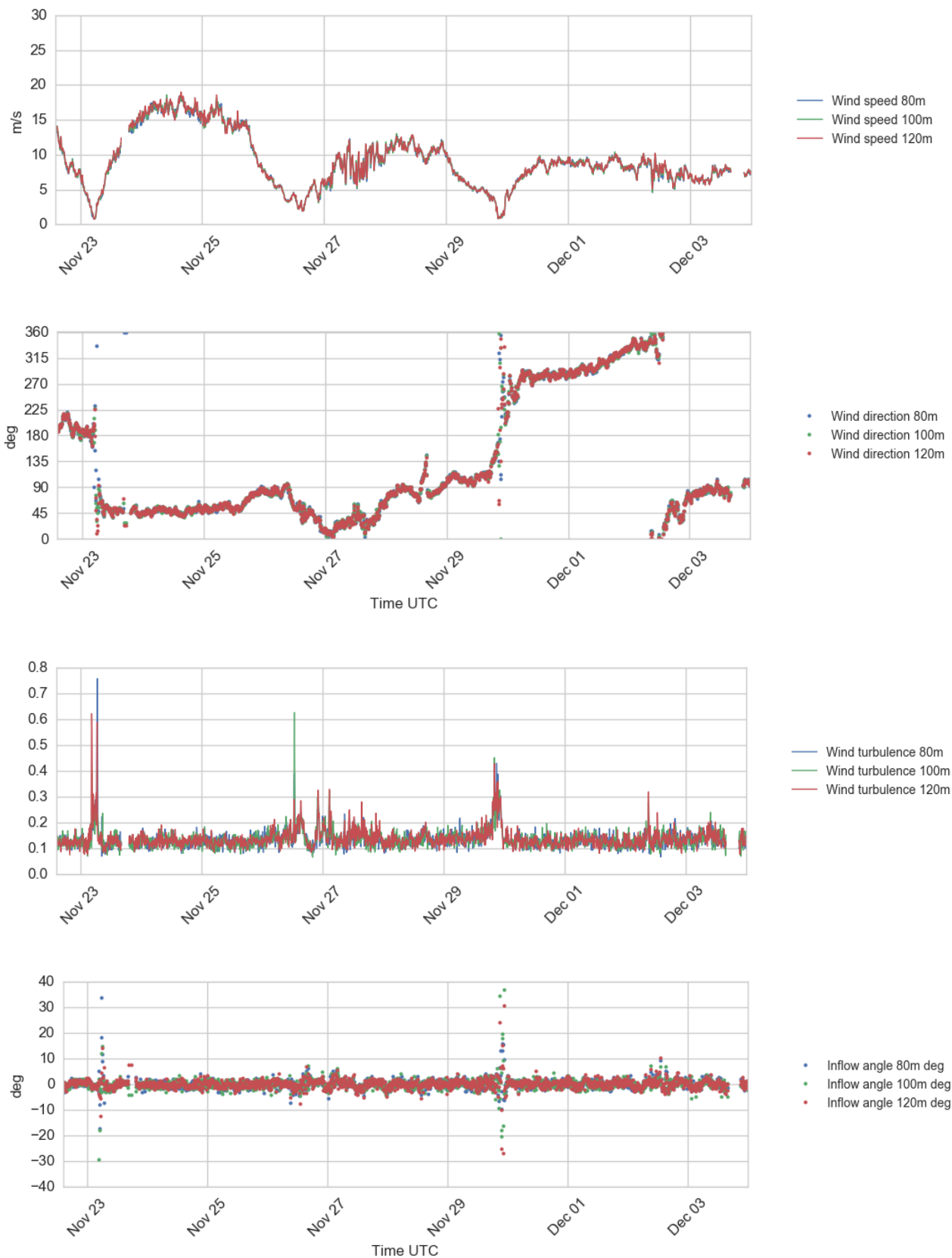


Figure 4.11 Plots of wind profile data, 80 – 120 m a.s.l., 22 Nov - 4 Dec 2016.

From top to bottom: Wind speed, Wind direction, Turbulence Intensity, and Inflow Angle.

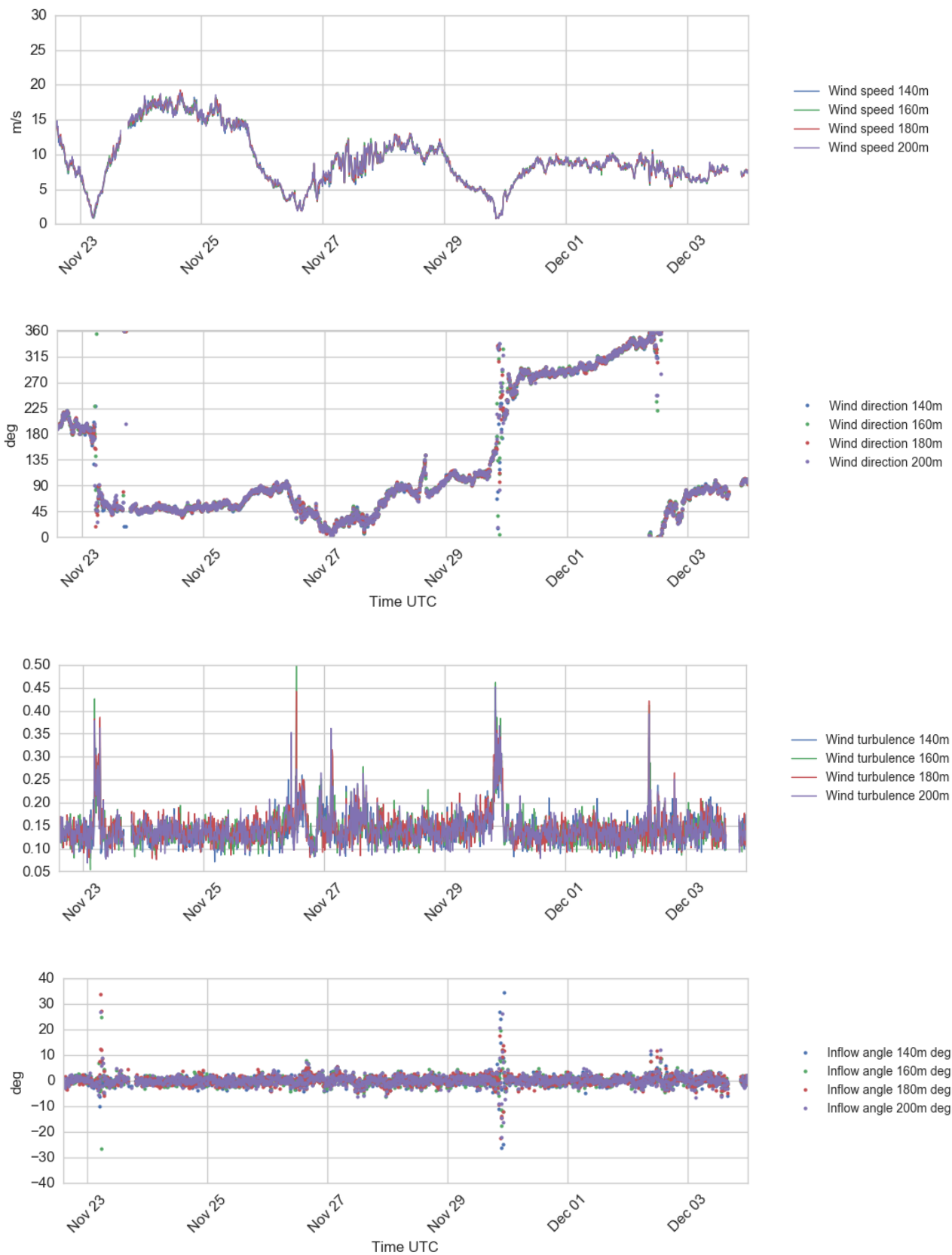


Figure 4.12 Plots of wind profile data, 140 – 200 m a.s.l., 22 Nov - 4 Dec 2016.

From top to bottom: Wind speed, Wind direction, Turbulence Intensity, and Inflow Angle.

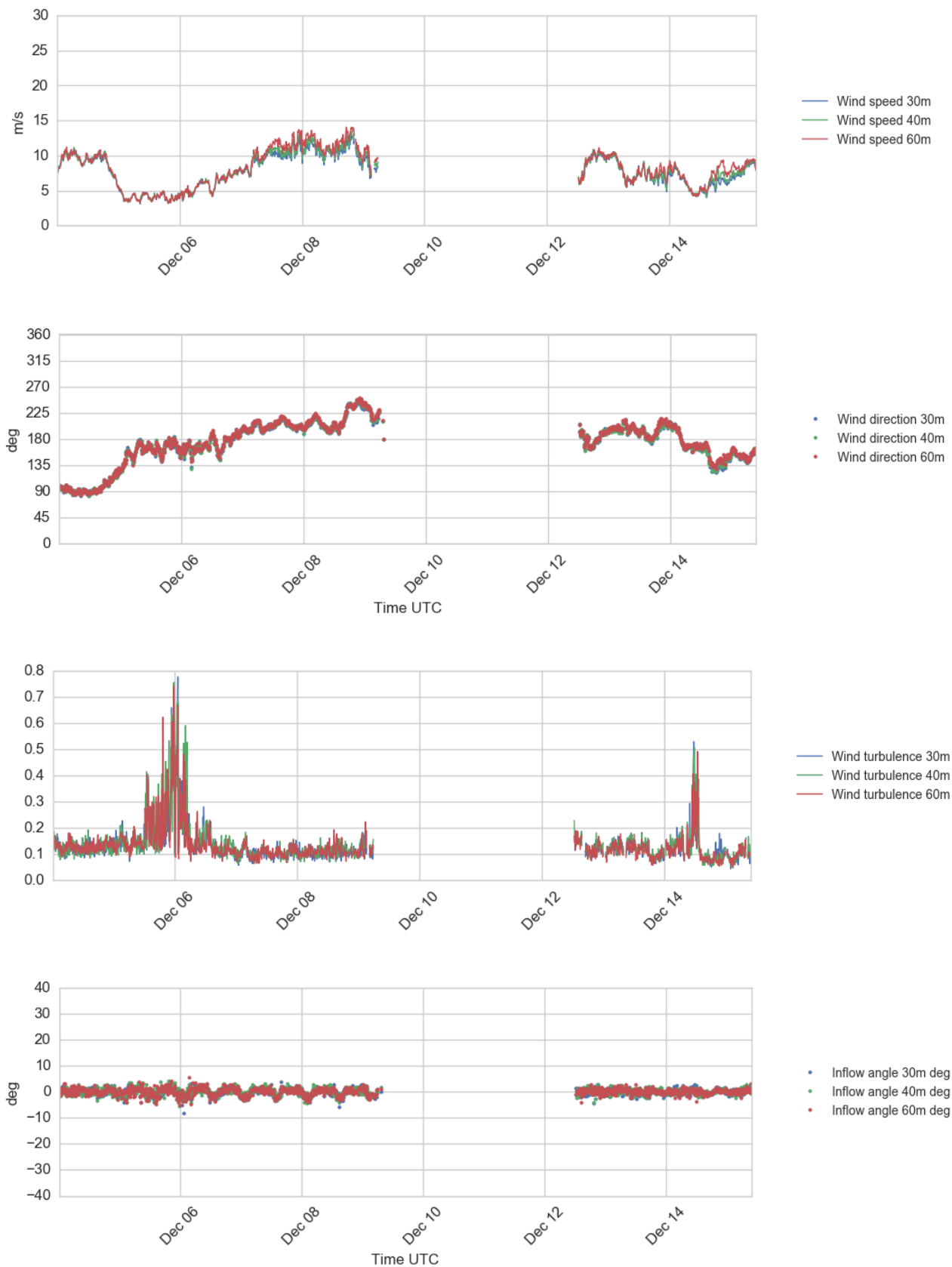


Figure 4.13 Plots of wind profile data, 30 – 60 m a.s.l., 4 - 15 Dec 2016.

From top to bottom: Wind speed, Wind direction, Turbulence Intensity, and Inflow Angle.

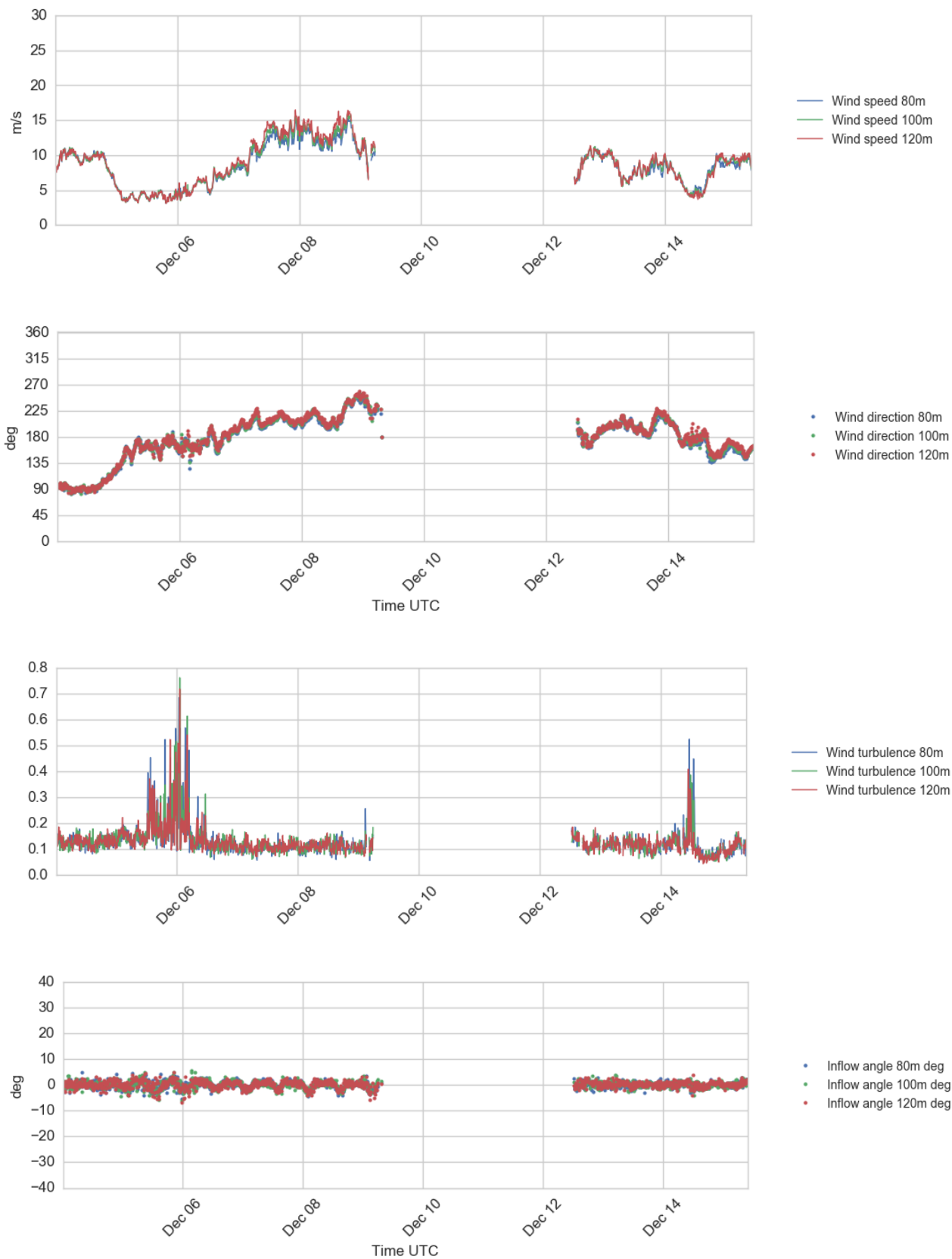


Figure 4.14 Plots of wind profile data, 80 – 120 m a.s.l., 4 - 15 Dec 2016.

From top to bottom: Wind speed, Wind direction, Turbulence Intensity, and Inflow Angle.

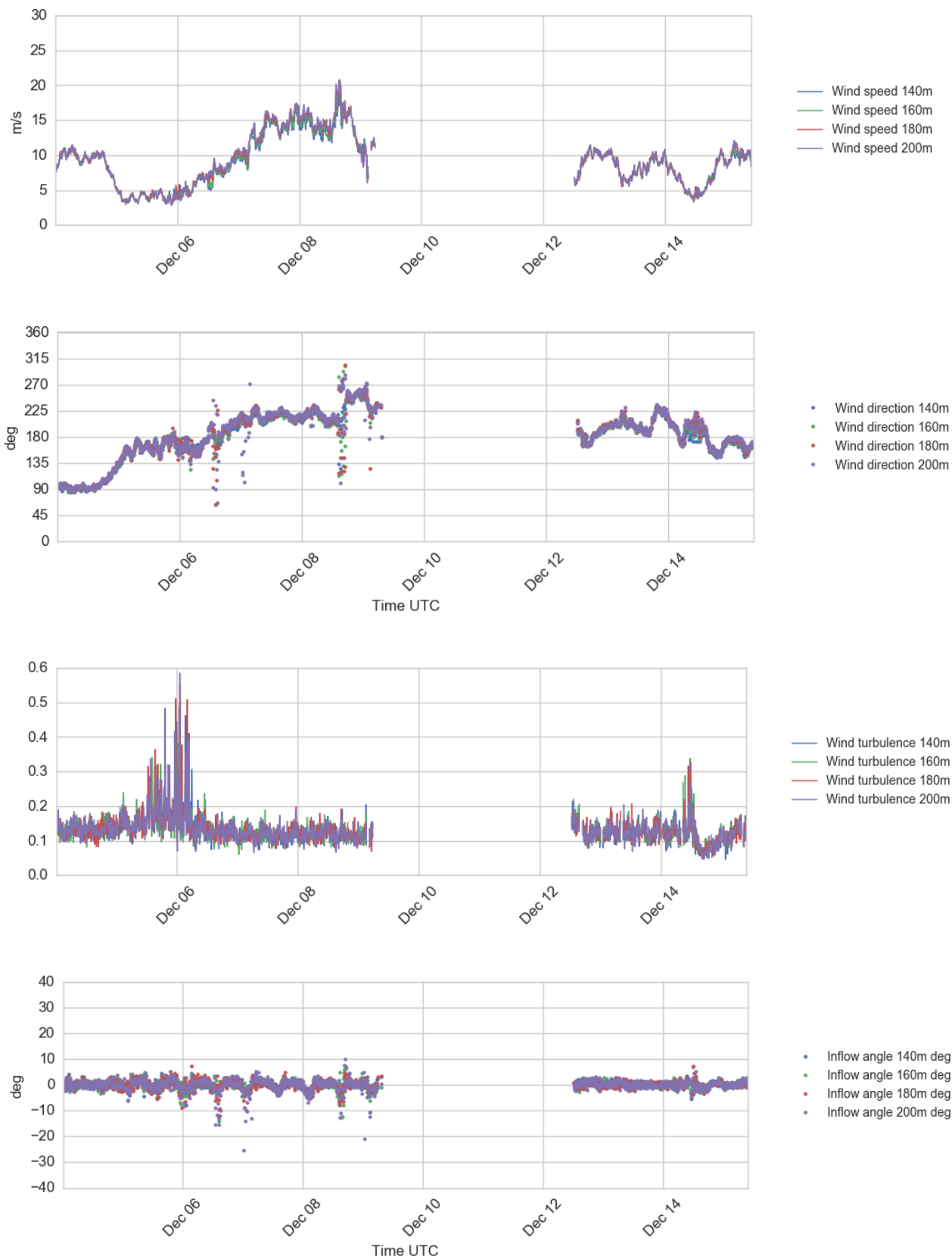


Figure 4.15 Plots of wind profile data, 140 – 200 m a.s.l., 4 - 15 Dec 2016.

From top to bottom: Wind speed, Wind direction, Turbulence Intensity, and Inflow Angle.

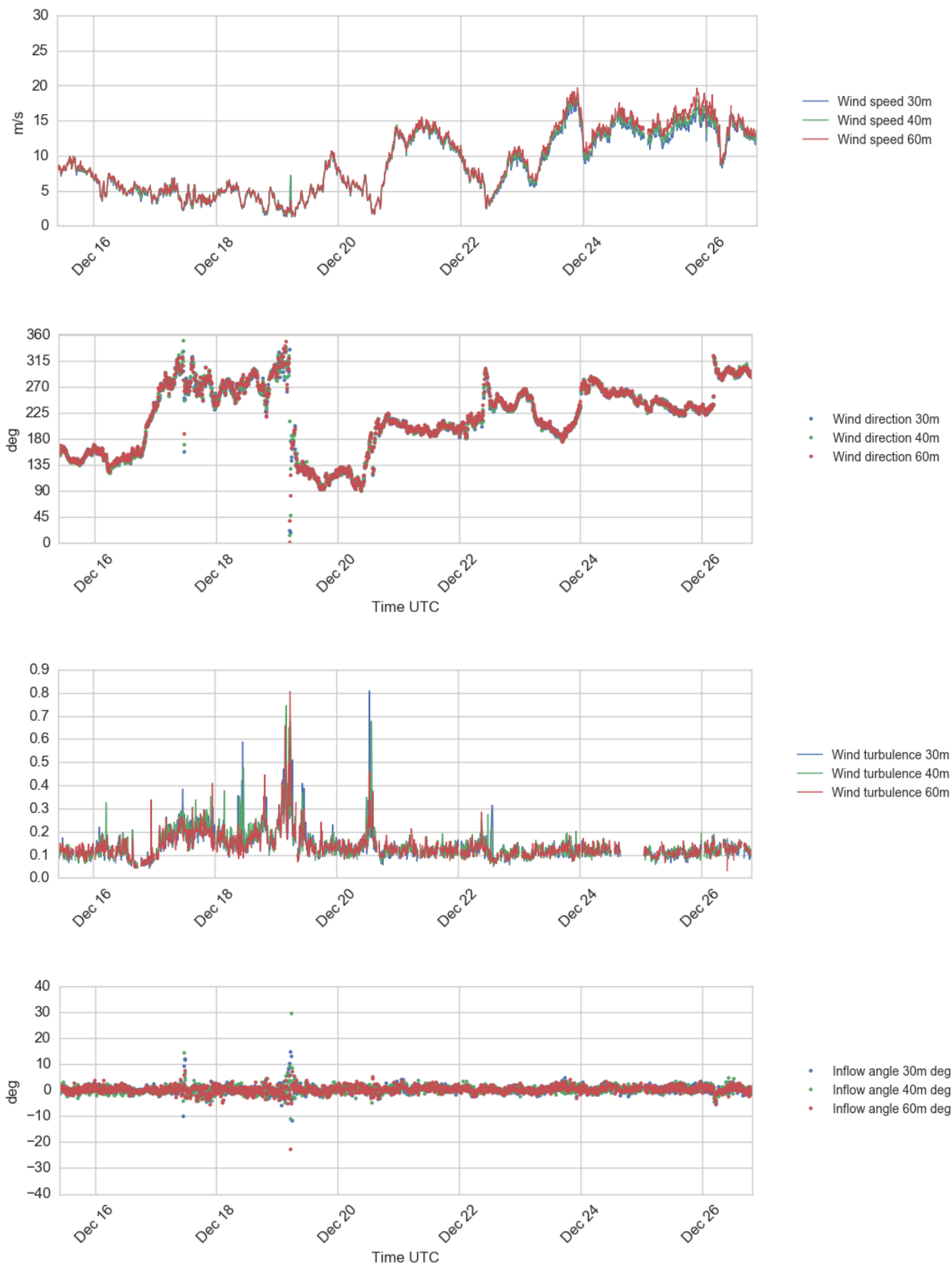


Figure 4.16 Plots of wind profile data, 30 – 60 m a.s.l., 15 - 26 Dec 2016.

From top to bottom: Wind speed, Wind direction, Turbulence Intensity, and Inflow Angle.

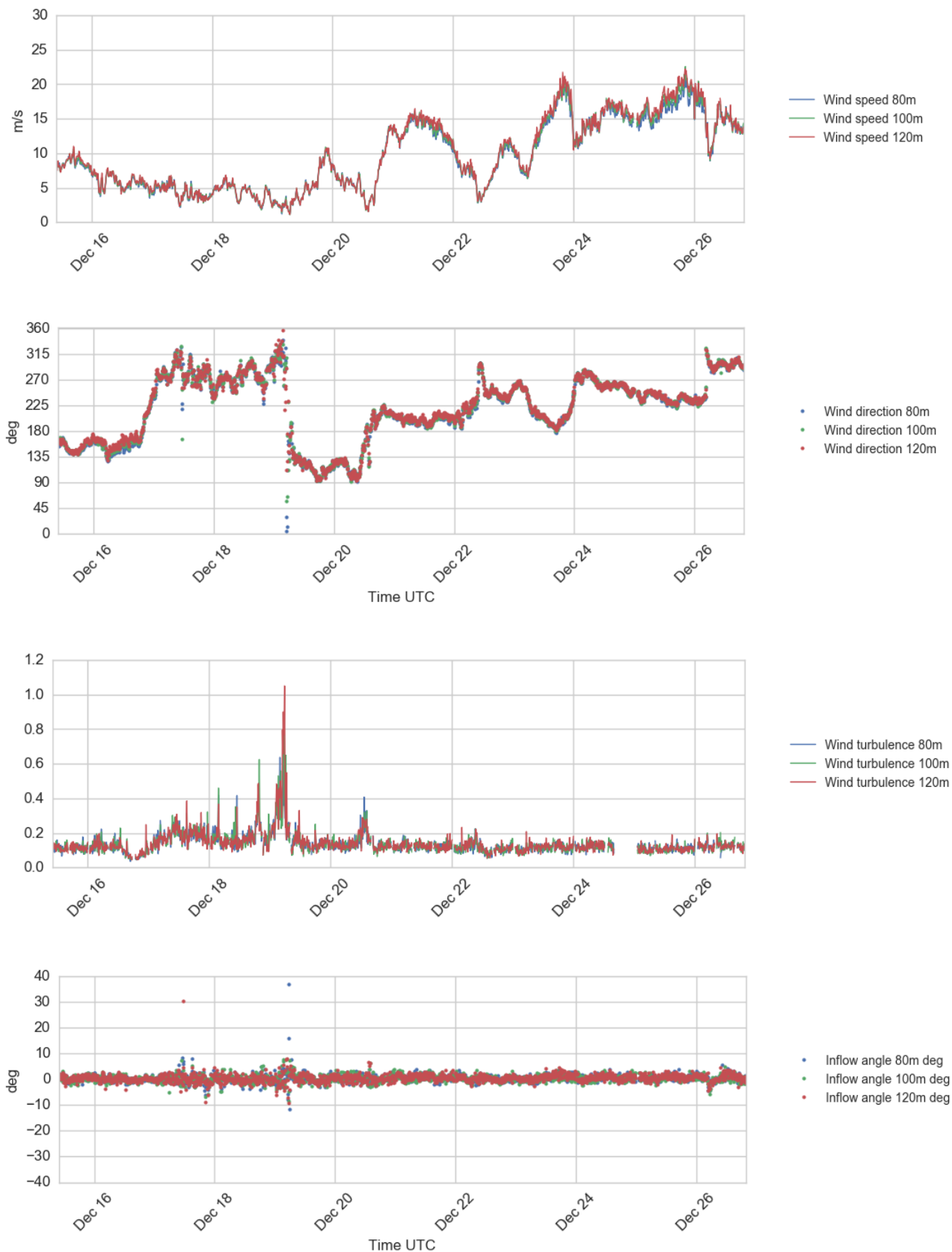


Figure 4.17 Plots of wind profile data, 80 – 120 m a.s.l., 15 - 26 Dec 2016.

From top to bottom: Wind speed, Wind direction, Turbulence Intensity, and Inflow Angle.

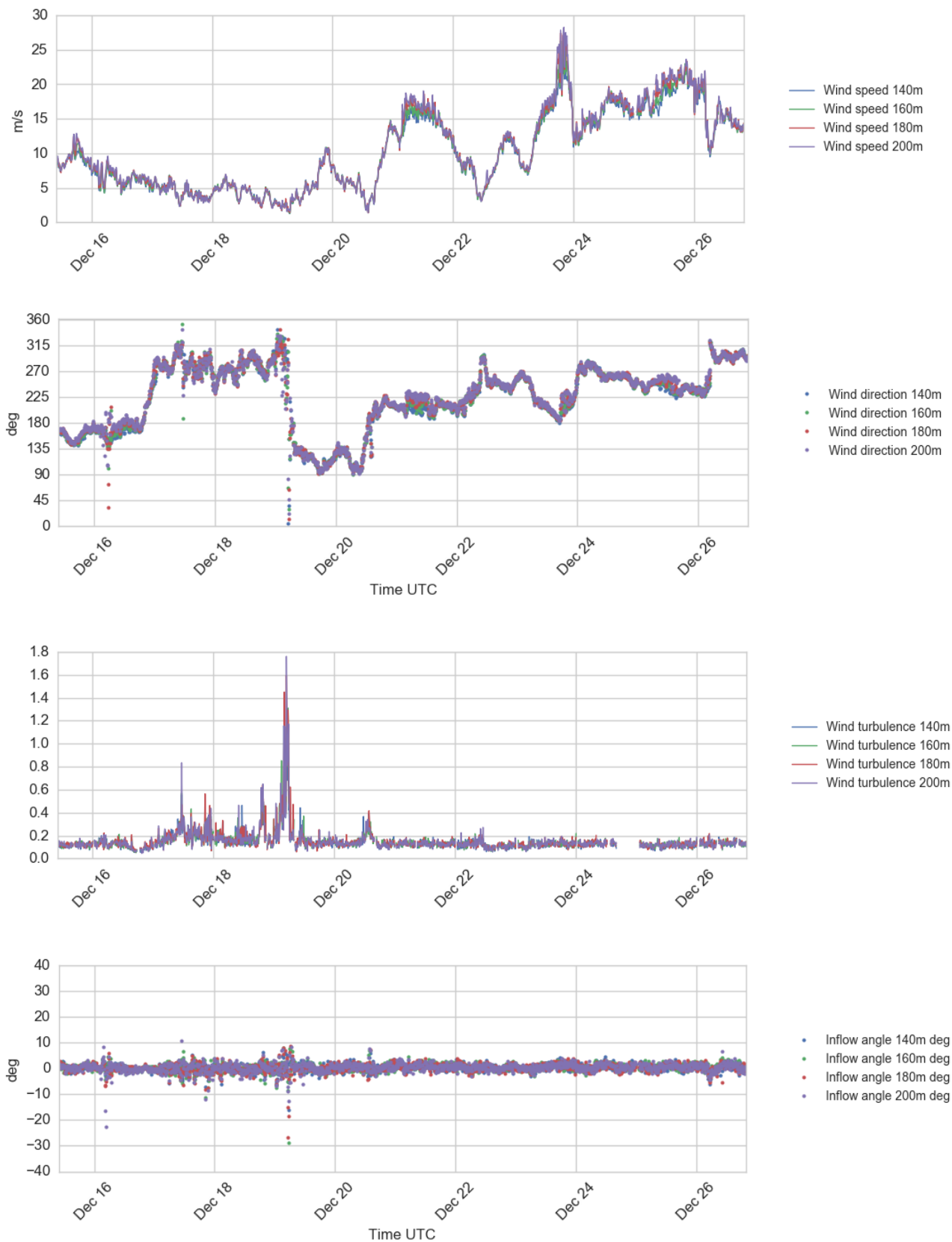


Figure 4.18 Plots of wind profile data, 140 – 200 m a.s.l., 15 - 26 Dec 2016.

From top to bottom: Wind speed, Wind direction, Turbulence Intensity, and Inflow Angle.

4.2.4 Current velocity profile data

The following plots show the current velocity profile time series. In these plots current direction 0° or 360° means that the current flows toward north, 90° indicates flow toward east etc. In general the current profiler has worked well, just a few data points were lost due to buoy restarting, but otherwise the series is continuous.

As expected for this location the current velocity data show a very strong and consistent semi-diurnal tidal current pattern, completing two full rotations of the current vector per day, and four tidal current maxima; two toward south-southwest and two toward north-east. This clear, strong and consistent semi-diurnal pattern in current velocity with two peaks per day is a strong evidence that the current sensor produces correct and good data.

The quarter-diurnal peaks in the tidal current speed normally vary between 60 – 100 cm/s over the month, depending on the phases of the moon. The average current speed shows little variation in the profile above the bottom layer; from around 50 cm/s between 6 – 16 m below surface to 44 cm/s at 26 m depth. The maximum observed current speed was 95 cm/s toward South West (220°) at 6 m depth on 27th of November.

At the lowest level, 30 m and, possibly, 28 m depth, the current speeds are reduced when the profiling beam hits the bottom. This usually occurs at every other peak in the current speed; that is when the strong current coincides with low tide.

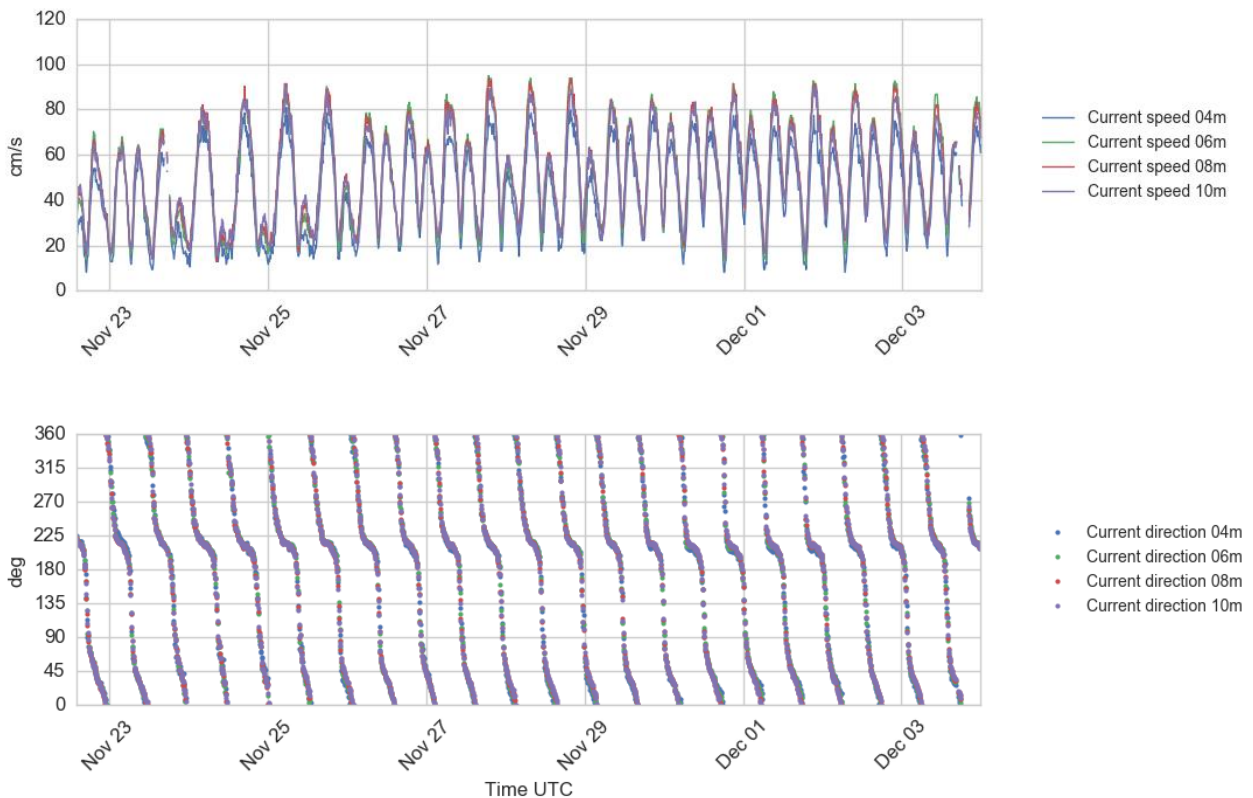


Figure 4.19 Time series plots of current speed (upper) and direction (lower panel), 4 - 10 m depth, 22 Nov - 4 Dec 2016.

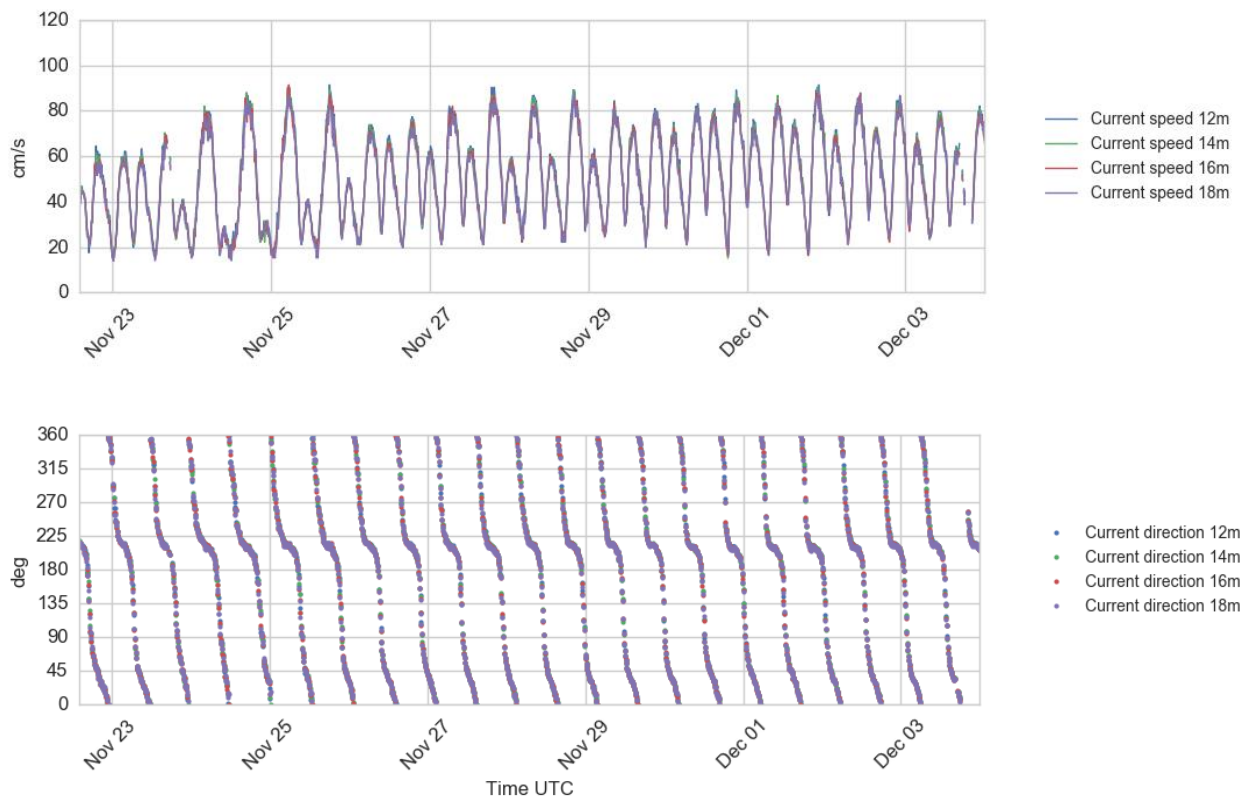


Figure 4.20 Time series plots of current speed (upper) and direction (lower panel), 12 - 18 m depth, 22 Nov - 4 Dec 2016.

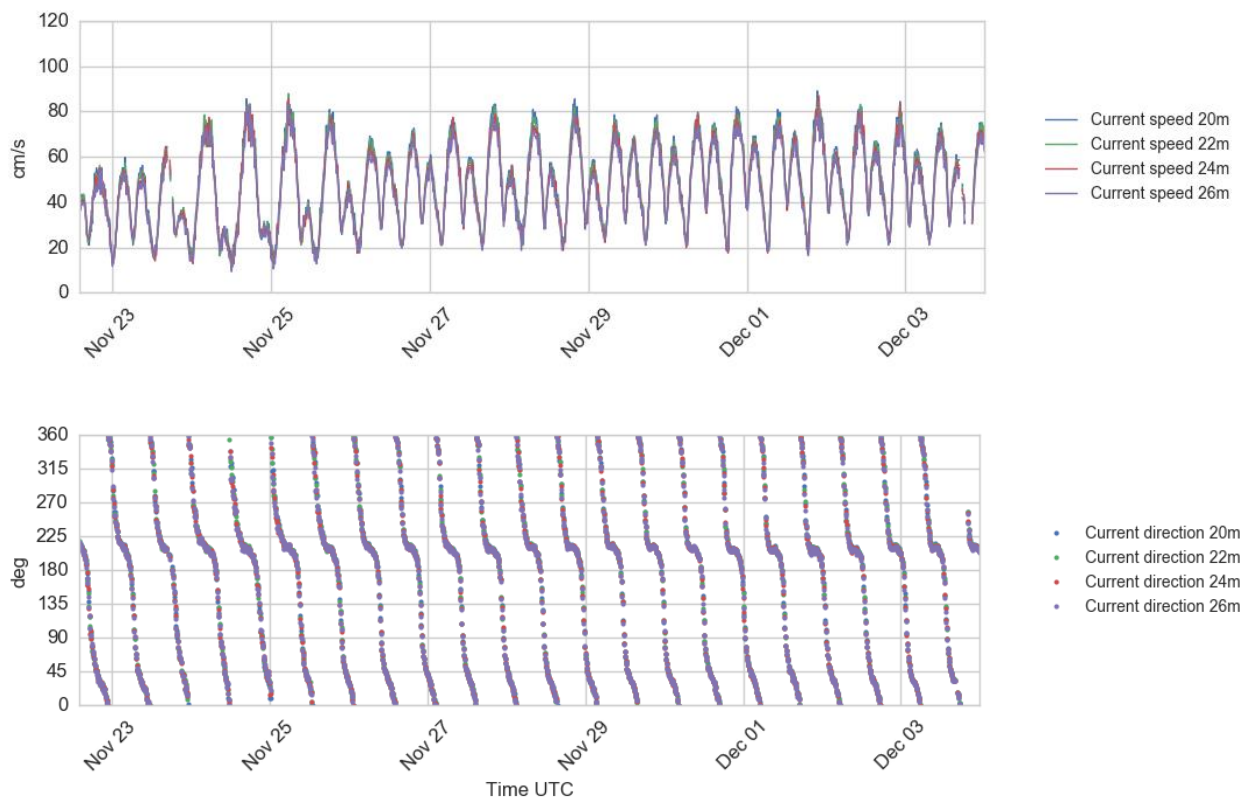


Figure 4.21 Time series plots of current speed (upper) and direction (lower panel), 20 - 26 m depth, 22 Nov - 4 Dec 2016.

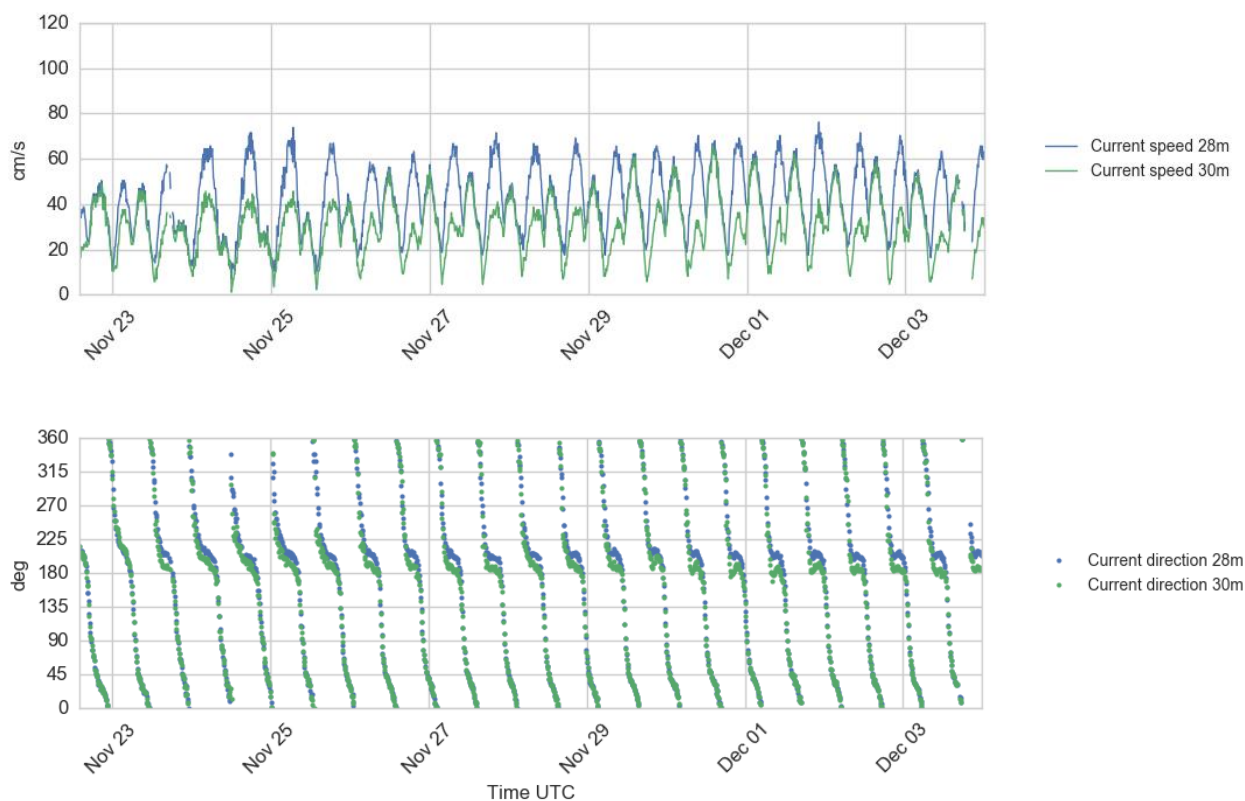


Figure 4.22 Time series plots of current speed (upper) and direction (lower panel), 28 - 30 m depth, 22 Nov - 4 Dec 2016.

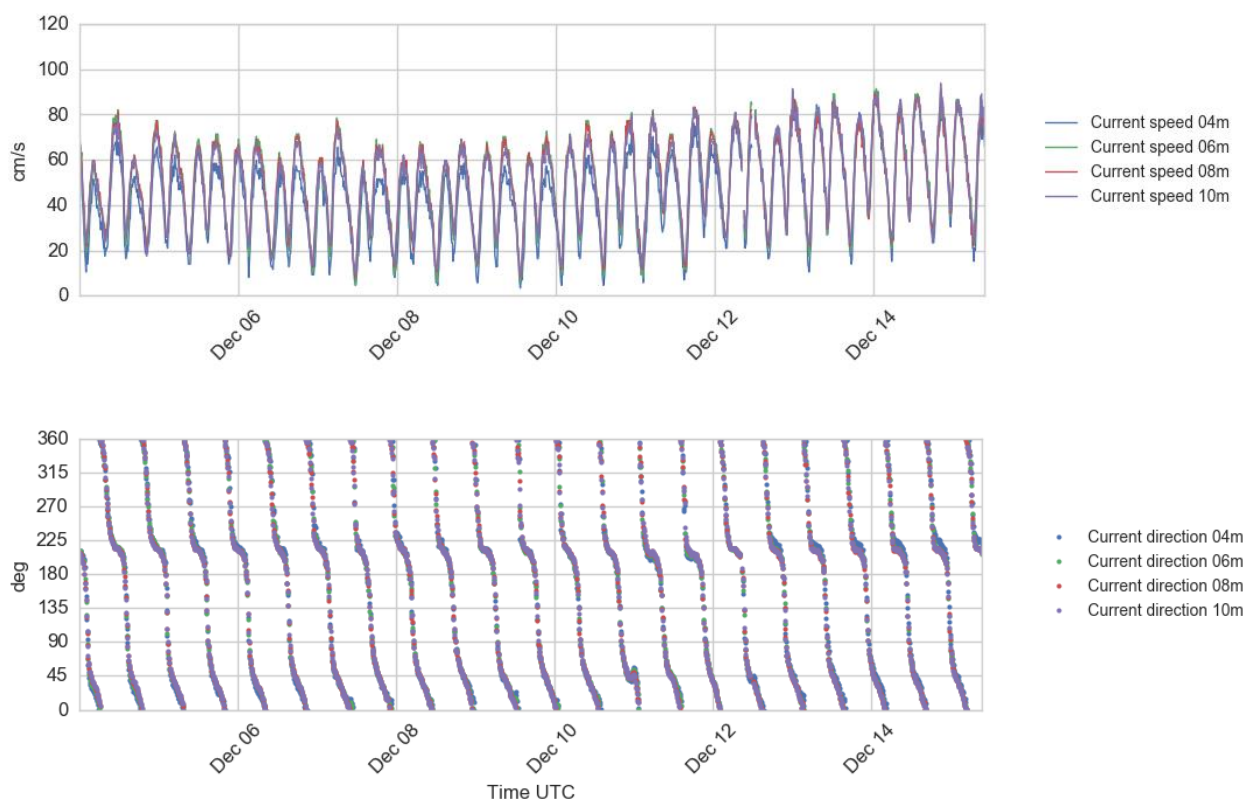


Figure 4.23 Time series plots of current speed (upper) and direction (lower panel), 4 - 10 m depth, 4 - 15 Dec 2016.

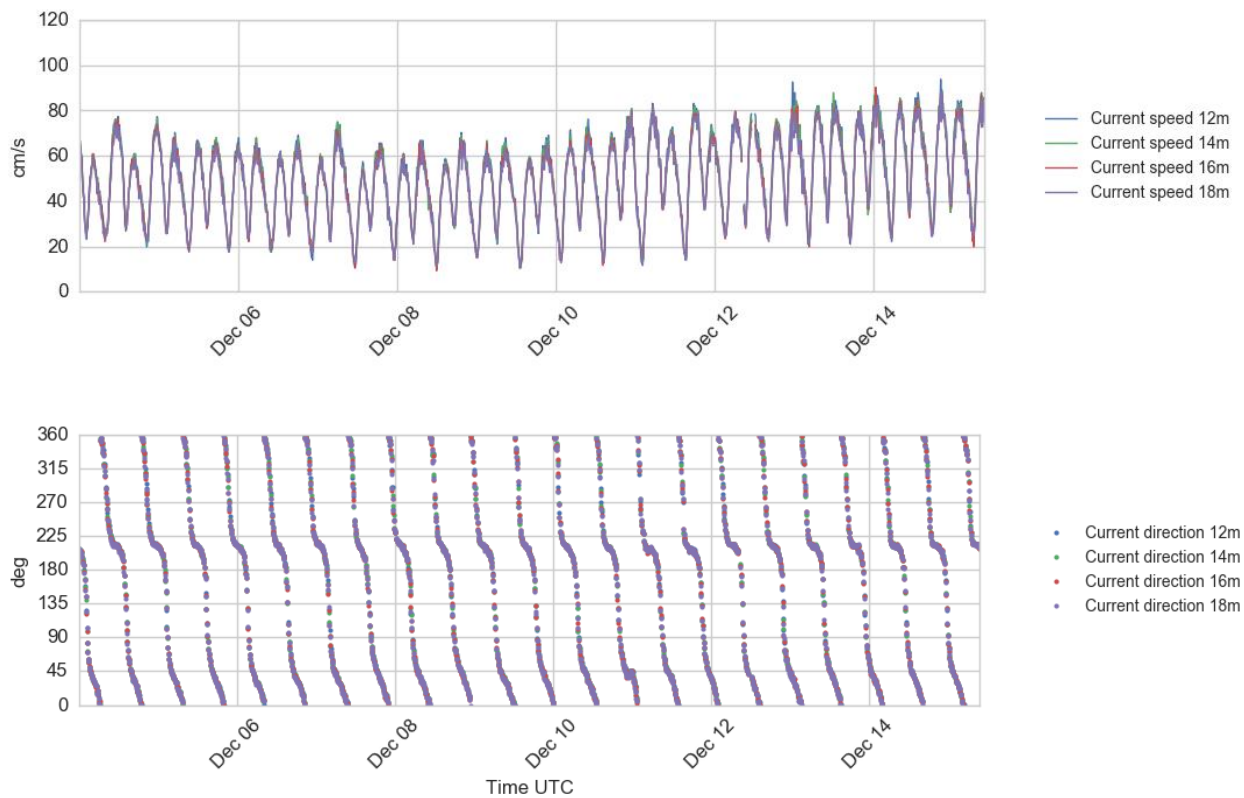


Figure 4.24 Time series plots of current speed (upper) and direction (lower panel), 12 -18 m depth, 4 - 15 Dec 2016.

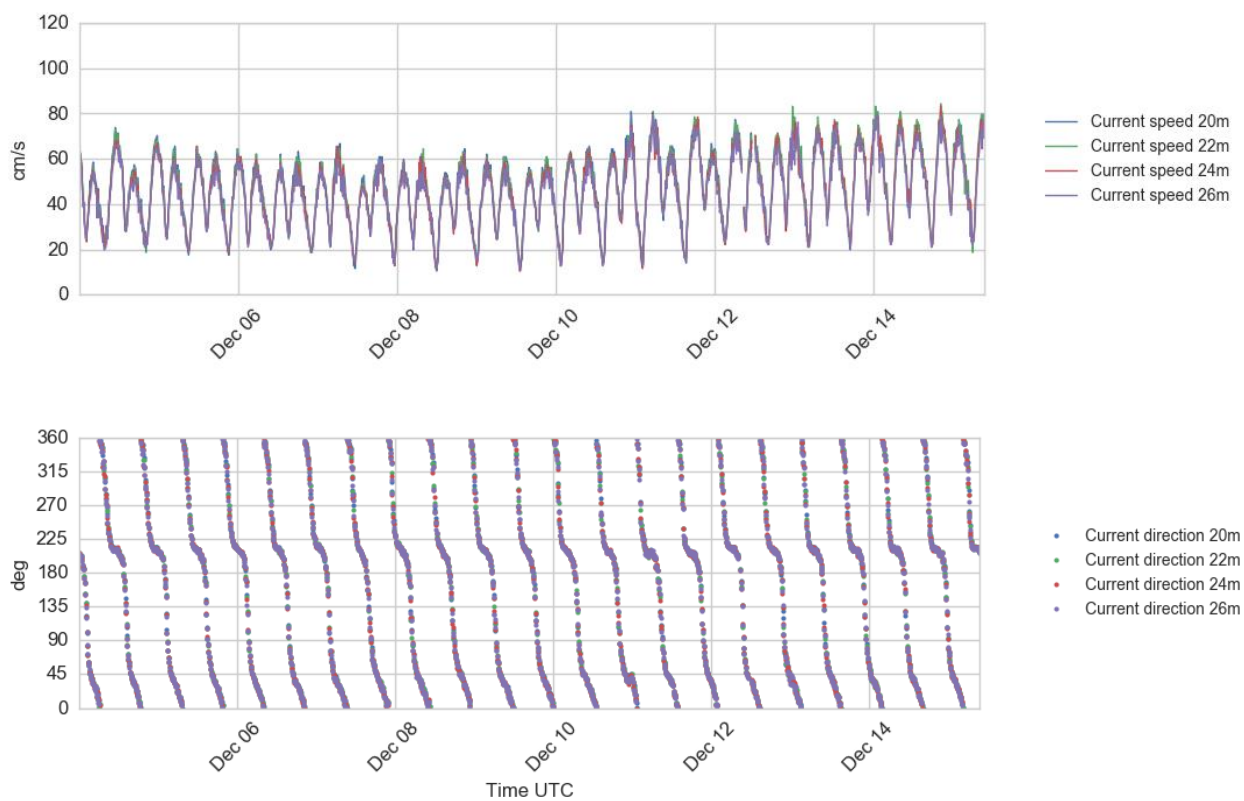


Figure 4.25 Time series plots of current speed (upper) and direction (lower panel), 20 – 26 m depth, 4 - 15 Dec 2016.

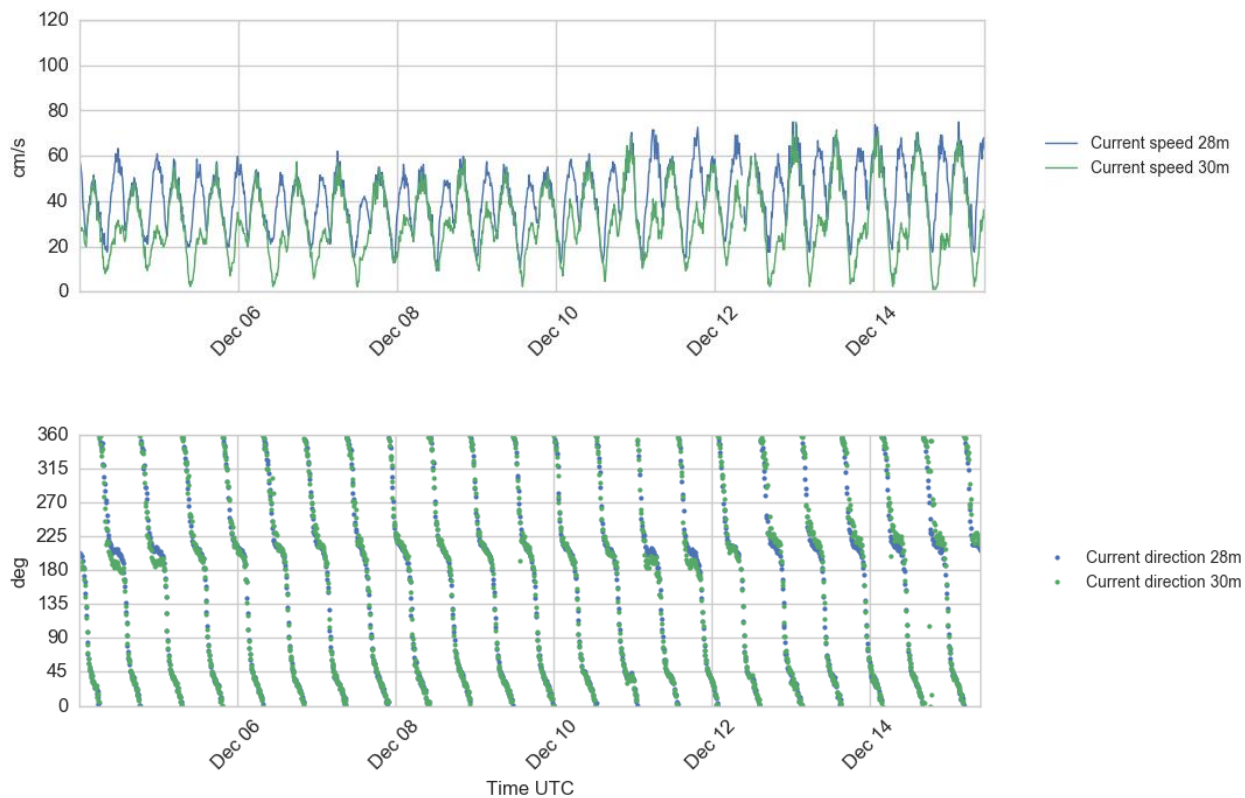


Figure 4.26 Time series plots of current speed (upper) and direction (lower panel), 28 – 30 m depth, 4 - 15 Dec 2016.

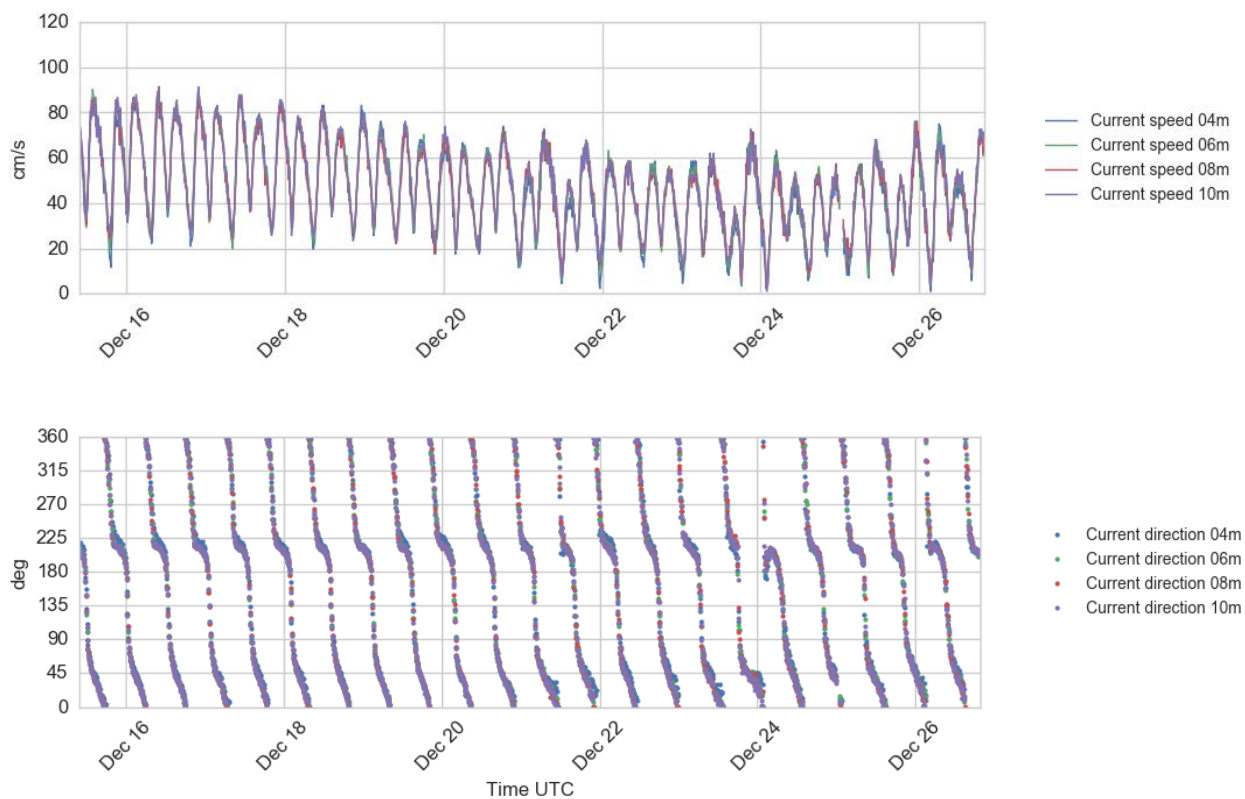


Figure 4.27 Time series plots of current speed (upper) and direction (lower panel), 4 - 10 m depth, 15 - 26 Dec 2016.

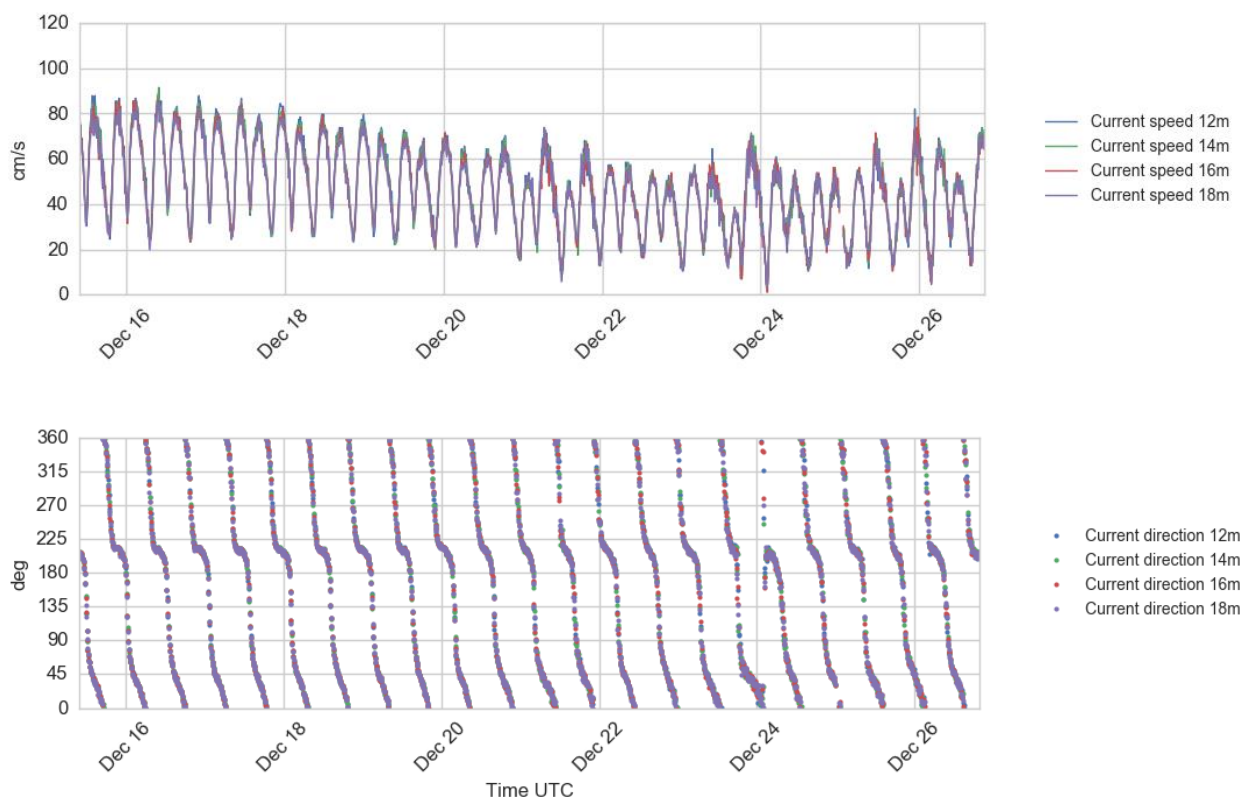


Figure 4.28 Time series plots of current speed (upper) and direction (lower panel), 12 - 18 m depth, 15 - 26 Dec 2016.

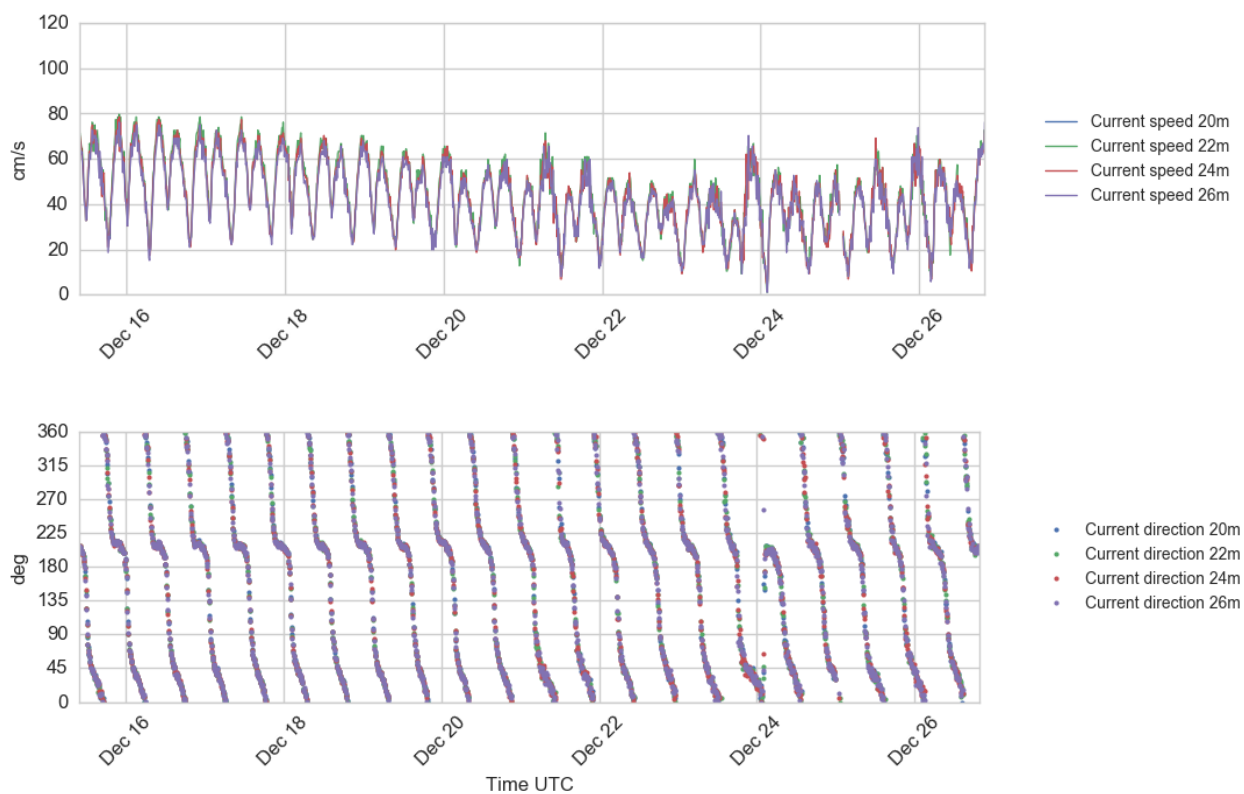


Figure 4.29 Time series plots of current speed (upper) and direction (lower panel), 20 - 26 m depth, 15 - 26 Dec 2016.

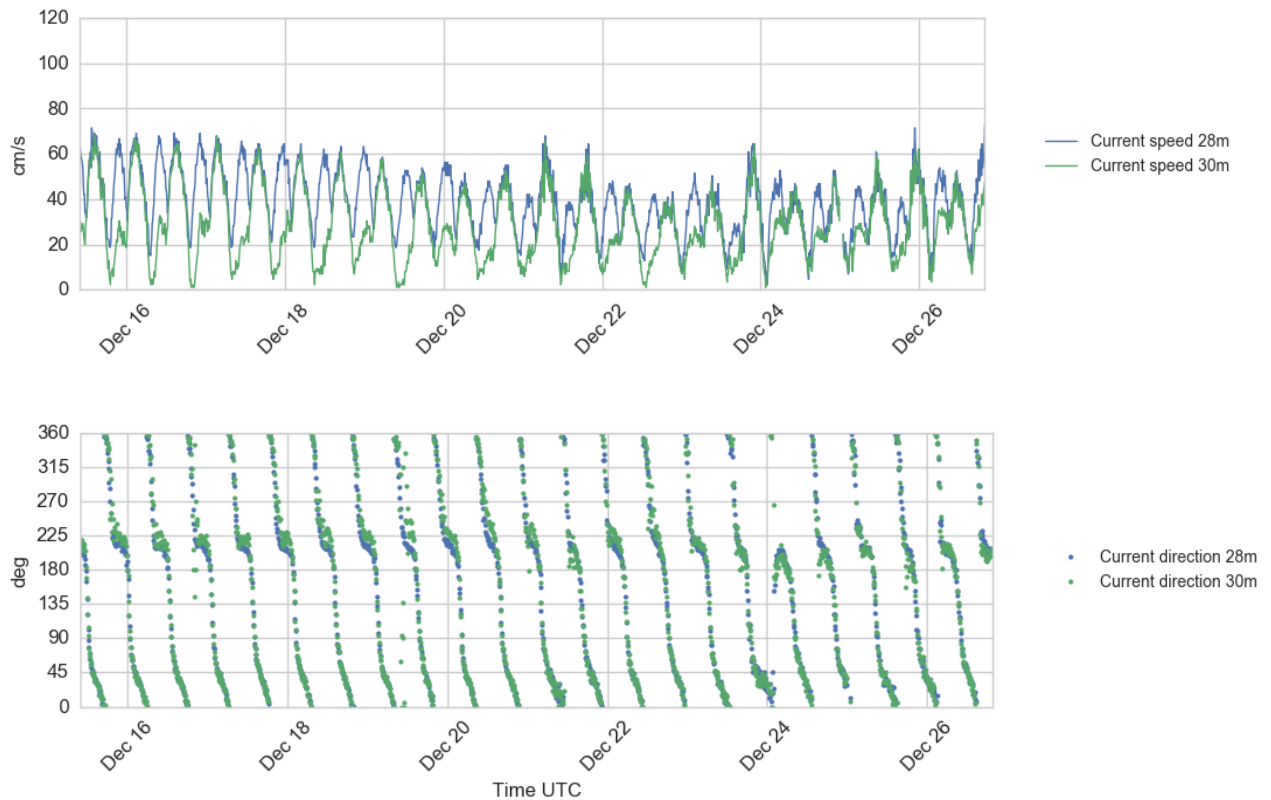


Figure 4.30 Time series plots of current speed (upper) and direction (lower panel), 28 - 30 m depth, 15 - 26 Dec 2016.

4.2.5 Water level and bottom temperature data

The buoy received no data from the bottom mounted Seaguard WLR via the acoustic data link during this month. The previously received data indicate that the communication link between the sensor and the buoy was broken on 8 July 2015. The data can be recovered from the internal storage in the WLR when it is recovered from the seabed.

Several attempts to recover the WLR have been performed without success. It is thus decided to postpone further attempts until better weather and lighter days come in the spring.

Since data recovery is of major importance, a second WLR recorder was deployed on 18 December 2015 together with the buoy to ensure data recovery. Due to long delivery times a spare acoustic communication system was not available at that time, and it was decided to deploy a WLR without the acoustics to ensure recovery of water level data. At least one of the two WLR units will record data that can be recovered from the seabed later.



Appendix A Deployment sheet

DEPLOYMENT SHEET	
Project Name:	Borssele
Project no: C75339	Latitude: 51°42.41388'N (x=502392)
Station name:	Longitude: 3°2.07708'E (y=5728440)
WS buoy no: WS156	Approx. depth: 33 m
PFF numbers: 33920 – 33926	Buoy marking:
Buoy module/sensor	Serial number/ID
Wavesense 3 data logger	279
XSense	0770017B
PMU	346
Vaisala PTB330	K2740014
Compass	1039696
Iridium modem	IMEI: 300125060202800 SIM: 8988169514001092381 MSISDN: 881623489332 MSISDN-C: 881692788814
UHF service radio Adeunis ARF7940BA	B142500101 Addr:11562
UHF service radio Adeunis ARF7940BA	B142500109 Addr: 11570
L3 AIS	Ser.no MMSI. 992572061
Gill wind sensor	14360066
Vaisala air HMP155 temperature/humidity	L3050100
Buoytracker	ID: 730307 Name: Borssele 2 WS156
LIDAR ZephIR300	501
Flashlight	329387
Nortek Current meter	AQP6691/AQD8621
Fuel Cell 1	efoy : 302306-1536-36837 stack : 151010086--00092
Fuel Cell 2	efoy : 302306-1536-36834 stack : 151010086--00088
Fuel Cell 3	efoy : 302305-1444-34726 stack : 151010084--01192
Fuel Cell 4	efoy : 302305-1443-34636 stack : 151010084--01171



CONFIGURATION				
Data transmission interval:	Continuous mode. ‘			
Listening window	NA			
POWER OPTIONS				
Lead batteries type	4 x 62Ah			
Lithium batteries:	6 x 272Ah			
Fuel cells	4 fuel cells with 10 methanol cartridges 28 litres each.			
DEPLOYMENT HISTORY				
	YEAR	MONTH	DATE	GMT
First measurement in Lot 1 position	2016	07	20	1000
Out of measuring position	2016	12	12	11:20
Last measurement				
Comments:				
Deployment vessel: Sea Bulldog	Recovery vessel:	Multرسالvor 3		
Deployed by: Lars Slettemark	Recovered by:	Lars Slettemark		



Appendix B DEPLOYMENT/RECOVERY SHEET				
Project Name: Borselle				
Project no: C75339		Latitude: 51°42.41388'N (x=502392)		
Station name: Borselle Lot 1		Longitude: 3°2.07708'E (y=5728440)		
WS buoy no: WS157		Approx. depth: 30m		
PFF numbers:		Buoy marking: YES		
Buoy module/sensor		Serial number/ID		
CONFIGURATION				
Data transmission interval:				
Listening window				
POWER OPTIONS				
Lead batteries type				
DEPLOYMENT HISTORY				
	YEAR	MONTH	DATE	GMT
First measurement	2016	February	12	1200
First measurement this deployment	2016	December	12	1205
Out of measuring position				
Last measurement				
Comments:				
WS157 attached to the Borselle Lot 1 mooring.				
WS157 deployment vessel: Multirasalvor 3		WS157 deployed by: Lars Slettemark		

THE NETHERLANDS ENTERPRISE AGENCY (RVO)

**Supply of Meteorological and Oceanographic data at Borssele Wind Farm Zone (BWFZ)
Validation report: 22 November - 26 December 2016**

**Reference No: C75339_VAL14_R1
27 January 2017**

**Fugro OCEANOR AS
Pirsenteret, P.O. Box 1224, Sluppen, N-7462 Trondheim, Norway
Tel: +47 73545200 Fax: +47 73545201, e-mail: trondheim@oceanor.com**



**Supply of Meteorological and Oceanographic data at Borssele Wind Farm Zone (BWFZ):
C75339_VAL14_R1**

Rev	Date	Originator	Checked & Approved	Issue Purpose
0	24.01.2017	Ola Storås	Arve Berg	Draft report
1	27.01.2017	Ola Storås	Arve Berg	Final report

Rev 1 – 27 January 2017	Originator	Checked & Approved
Signed:		

This report is not to be used for contractual or engineering purposes unless the above is signed where indicated by both the originator of the report and the checker/approver and the report is designated 'FINAL'.

TABLE OF CONTENT

SUMMARY	1
1. INTRODUCTION.....	2
2. Instrumentation and measurement configuration	2
3. Results	6
3.1 Data recovery.....	6
3.2 Reference stations.....	7
3.2.1 Positions and distances.....	7
3.2.2 Schouwenbank.....	7
3.2.3 Vlake van de Raan	8
3.3 Evaluation of the collected data.....	10
3.3.1 Wave data	10
3.3.2 Wind data	13
3.4 Conclusions	16
Appendix A	1

SUMMARY

The Seawatch Wind Lidar buoy is deployed at the Borssele Wind Farm Zone (BWFZ). The buoy was first deployed on 11 June 2015 at 15:55 UTC, and a bottom mounted tide gauge (WLR) was deployed at 16:15 UTC on the same day. This report presents an evaluation of the wind and wave data collected during the period 22 November - 26 December 2016, comparing the buoy data to data from two fixed measurement stations in the region.

In total 3 different buoys has been used for the measurements. In the whole 2015 and until 19th January 2016 the Seawatch Wind Lidar buoy WS149 was used for the measurements. On the 12th February 2016 the SW Wind Lidar buoy WS157 was deployed at the same position. This buoy was used for the measurements until 20th July 2016 and was then swapped with SW Wind Lidar buoy WS156. This buoy was then used until 12th December 2016 when it was swapped with SW Wind Lidar buoy WS157.

The reference station for comparing wave measurements is a Waverider buoy at Schouwenbank (station SCHB), and the reference for wind measurements is the platform at Vlakte van de Raan (VR).

Although the reference stations are some 19 – 26 km away from the buoy location we see good agreement between the buoy and references. The correlations for wave height and period are better than in previous months.

1. INTRODUCTION

A Seawatch Wind Lidar buoy is deployed at the Borssele Wind Farm Zone (BWFZ) in the Dutch sector of the North Sea. The buoy with serial no WS149 was first deployed on 11 June 2015 at 15:55 UTC with the bottom mooring weight at position 51° 42.41388' N, 3° 2.07708' E. A bottom mounted water level recorder (WLR) at position 51° 42.4362' N, 3° 02.1030' E transmits data to the buoy in real time data via an acoustic link. The water depth at this location is approximately 30 m.

In total 3 different buoys has been used for the measurements. In the whole 2015 and until 19th January 2016 the Seawatch Wind Lidar buoy WS149 was used for the measurements. The Lidar on Buoy WS149 stopped working on 26 December 2015 due to a technical problem with its Lidar power switch. After a long period of unworkable weather conditions, and some delay due to vessel unavailability, the buoy was recovered for repair on 19 January 2016. The root cause of the problem was found and measures were taken to prevent it from happen again.

On the 12th February 2016 the SW Wind Lidar buoy WS157 was deployed at the same position at 13:00. This buoy was in successful operation in position until recovery for fuel refill on 20th July 2016 and was then swapped with SW Wind Lidar buoy WS156 at 10:00 UTC. This buoy was then used until 12th December 2016 when it was swapped with SW Wind Lidar buoy WS157. All the buoys used have been pre-deployment validated at Fugro OCEANOR test site according to the Carbon Trust OWA roadmap, approved by DNV-GL (reports are published on RVO web page for offshore wind).

Data collected during the period 22 November - 26 December 2016 are presented in the data presentation report ref. C75339_MPR14_R1.

This report presents an evaluation of the wind and wave data collected in the period 22 November - 26 December 2016, comparing the buoy data to data from fixed measurement stations in the area. The reference stations used in this report are the Waverider buoy at Schouwenbank (station SCHB) for waves, and a platform with a wind sensor at Vlakte van de Raan (VR) for wind measurements. The comparisons are shown in time series and scatter plots.

The time reference used in this report is UTC.

2. Instrumentation and measurement configuration

The buoy is a Seawatch Wind Lidar Buoy based on the original Seawatch Wavescan buoy design with the following sensors:

- Wavesense: 3-directional wave sensor
- Xsens 3-axes motion sensor
- Gill Windsonic M acoustic wind sensor
- Vaisala PTB330A air pressure sensor
- Vaisala HMP155 air temperature and humidity sensor
- Nortek Aquadopp 600kHz current profiler.
- ZephIR 300S Lidar.

An independent self-recording Aanderaa SeaGuard WLR tide gauge is located on the bottom. The WLR transmits data to the buoy via an acoustic link.

The buoy with mooring as deployed is presented in Figure 2.1, including the mooring for the WLR.

The measurement setup is detailed in Table 2.1. Detail information such as sensor types and serial numbers can be found in the deployment record in Appendix A.

Table 2.1 Configuration of measurements by the Seawatch Wind Lidar buoy at Borssele Borssele Wind Farm Zone (BWFZ).

Instrument type	Sensor height (m)	Parameter measured	Sample height ²⁾ (m)	Sampling interval (s)	Averaging period (s)	Burst interval (s)	Transmitted?
Wavesense 3	0	Heave, pitch, roll, heading	0	0.5	Time series duration: 1024 s	600	No
		Sea state parameters (1)	0	600	1024	600	Yes
Xsens		Heave, east, north acceleration, q0, q1, q2, q3 (attitude quaternion)	0	0.5	N/A	3600	No
Gill Windsonic M	4.1	Wind speed, wind direction	4.1	1	600	600	Yes
Vaisala PTB330A	0.5	Air pressure	0.5	30	60	600	Yes
Vaisala HMP155	4.1	Air temperature Air humidity	4.1	5	60	600	Yes
Nortek Aquadopp	-1	Current speed and direction profile, water temperature (at 1 m depth)	-4 -6 ... -30 (14 levels)	N/A	600	600	Yes
ZephIR 300S Lidar	2	Wind speed and direction at 10 heights (The 11 th level, the so called reference level which is not configurable, is also located at 40 m and referred to as 40.0 Ref.)	30.0 40.0 40.0 ref 60.0 80.0 100.0 120.0 140.0 160.0 180.0 200.0	≈ 17.4 s ¹⁾	600	600	Yes
Aanderaa WLR (SeaGuard) via acoustic link	-30	Water pressure Temperature	-30	600	60	600	Yes ³⁾

¹⁾ This is the approximate time between the beginning of one sweep of the profile and the next one, the interval may vary slightly. The ZephIR sweeps one level at a time beginning at the lowest one, and after the top level has been swept it uses some time for calculations and re-focusing back to the lowest level for a new sweep.

²⁾ Height relative to actual sea surface. The depth of the WLR is an approximate number.

³⁾ The WLR data are not transmitted after 8 July 2015 due to failure of the acoustic link. An additional self-contained WLR was deployed 18 December 2015 to ensure data recovery.

Table 2.2 Definitions of wave parameters presented in this report

H	Individual wave height
Hmax	= Max(H): Height of the highest individual wave in the sample, measured from crest to trough
m0, m1, m2, m4, m-1, m-2	Moments of the spectrum about the origin: $\int f^k S(f)df$ where $S(f)$ is the spectral density and the wave frequency, f , is in the range 0.04 - 0.50 Hz
Hm0	Estimate of significant wave height, H_s , $Hm0 = 4\sqrt{m0}$
Tp	Period of spectral peak = $1/f_p$, The frequency/period with the highest energy
Tm01	Estimate of the average wave period; $Tm01 = m0/m1$
Tm02	Another estimate of the average wave period; $Tm02 = \sqrt{\frac{m0}{m2}}$
ThTp	Mean wave direction at the spectral peak ("The direction of most energetic waves")
Mdir	Wave direction averaged over the whole spectrum
	Directions are given in degrees clockwise from north, giving the direction the waves come from. (0° from north, 90° from east, etc.)

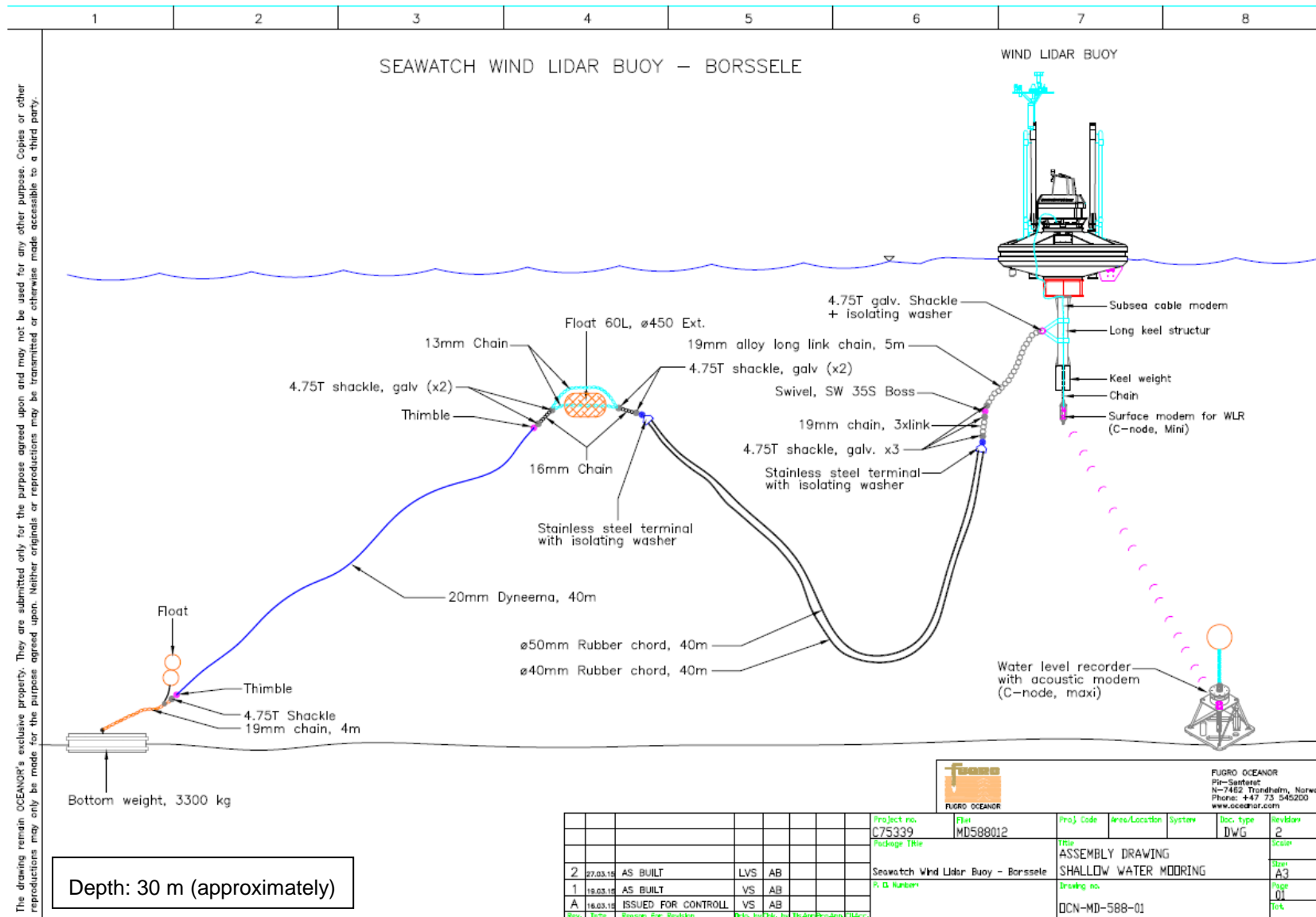


Figure 2.1 Mooring design for the Wind Lidar Buoy as deployed at Borssele Wind Farm Zone (BWFZ).

3. Results

3.1 Data recovery

The buoy transmitted data continuously from all sensors from 22 November 2016 at 14:20 until 26 December at 19:50, with the exception of one major and some minor gaps. The major gap in the wind data happened because the buoy run out of fuel on 9th December. Refuelling (buoy swapping) was planned carried out on the 6th December and vessel was booked. However, due to an unexpected incident on another RVO project (HKZ), which was considered to be more urgent, the vessel and the Fugro OCEANOR field engineer, was redirected to work on the other project. Thus the planned swapping was postponed and unfortunately the buoy run out of fuel before the swapping could take place.

There are in addition a few short gaps in the Lidar data where the received data are replaced by the “missing data” flag at all heights. The data gaps occurred on 23rd of November and 3rd of December. Due to the gaps it took 34.229 days to collect 30.5 days of good wind profile data¹.

The air temperature and humidity sensor seems to have an issue with repeating values in the measurement period, although much less than experienced earlier. These values have been removed from the data set causing it to have a lower availability for these parameters.

The number of hours of good data compared to the total obtainable hours of data is presented in Table 3.1.

Table 3.1 Data return during the period 22 November 2016 at 14:20– 26 December 2016 at 19:50.

Measurement device	Length of data period (days)	Length of data set (days)	Average availability (%)
Lidar wind profile sensor	34.229	30.500	89.105
Wave sensor	34.229	33.778	98.682
Current velocity sensor	34.229	33.965	99.229
Atmospheric pressure sensor	34.229	33.924	99.108
Air temperature sensor	34.229	27.439	80.162
Water Level Sensor *	34.229	0	0.00

* The real time transmitted water level data are unexpectedly lost due to breakdown of the acoustic link. However, the complete data series will be recovered if the instrument is recovered.

Air temperature and air pressure is measured by independent sensors. The fuel shortage from 9th to 12th December **only** affect the Lidar, the other sensors are supplied from the lithium batteries when the lead acid batteries are empty. Therefore the availability of the air pressure sensor can be excellent while the wind data dropped to below 90 % due to fuel shortage for the Lidar. The low availability for air temperature is due to sensor issue, not lack of power.

¹ Additional gaps in the real time transmitted Turbulence Intensity (TI) data are caused by breaks in the satellite dial-up transmission link. The data that were not received in real time are stored internally in the buoy and will be downloaded from the buoy when it is recovered.

3.2 Reference stations

3.2.1 Positions and distances

Two public reference stations are used in the validation of the data. The reference for the wave measurements is a Waverider buoy at Schouwenbank (SCHB). For wind the reference is the station at Vlakte van de Raan (VR). The positions of the stations are given in Table 3.2, which gives an overview of the locations and distances.

Table 3.2 Positions of the Lidar buoy and the reference stations used in the evaluation of the buoy data.

Station	Latitude	Longitude	Distance from the Lidar buoy	Shortest distance from land
Borssele Lidar buoy	51° 42.41' N	3° 2.08' E		32.5 km
Schouwenbank Waverider buoy (SCHB)	51° 44.8' N	3° 18.3' E	19.3 km	22.0 km
Vlakte van de Raan (VR)	51° 30.0' N	3° 15.0' E	27.6 km	12.2 km

3.2.2 Schouwenbank

The wave measuring buoy at Schouwenbank (SCHB station) is a directional (“2D”) Datawell Waverider buoy. This buoy measures the wave height and directional spectrum using 3-axis accelerometers.



The SCHB station should be expected to have lower heights of wind sea than the Borssele Lidar buoy location in southerly to north-easterly winds due to the more limited fetch distance in those directions. In situations with wind sea from north-east to north-west, and situations dominated by northerly swells the two buoy should be exposed to approximately the same wave heights.

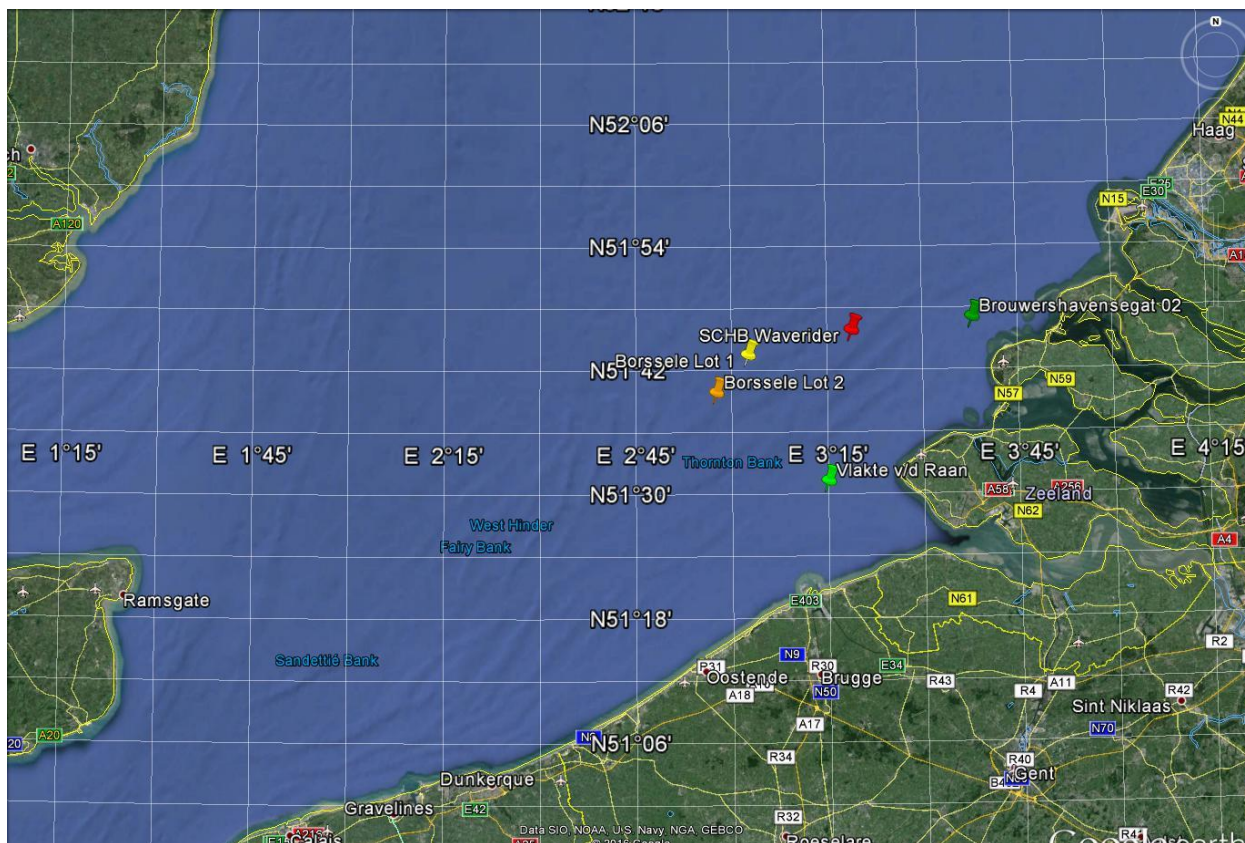


Figure 3.1 Google Earth image indicating Lidar buoy Lot 1 and 2 positions and reference stations. (The Borssele Lot 1 Lidar buoy which is validated in this report is marked by the bright yellow pin.)

3.2.3 Vlakte van de Raan

The Vlakte van de Raan (VR) station is measuring wind speed and wind direction. Figure 3.2 shows a photo of the wind mast. Wind speed is measured with the KNMI cup-anemometer. Cup diameter is 105 mm and the distance between the centre of the cups to the rotation axis is 100 mm. Wind direction is measured with the KNMI wind vane. Distance between axis and the outer side of the vane is 535 mm. The anemometer and wind vane are located 13.9 m above the mean sea level. The azimuth of the wind vane plugs at the tip of the booms are determined with a camera relative to distant objects at close to the horizon. The instruments are logged with the KNMI wind SIAM. Wind gusts are determined from a running 3 sec mean value.



Figure 3.2 The wind measuring station at Vlake van de Raan.

Calibration of the cup anemometers is done in the wind tunnel of KNMI. Wind vanes are balanced and the direction of the vane is tested. Sensors are replaced after 26 month. The cup anemometer contains a photo-chopper with 32 slits. The accuracy is 0.5 m/s. The threshold velocity is 0.5 m/s. The resolution is 0.1 m/s. The response length is 2.5 m. The wind vane contains a code disk. Accuracy is 3°. Resolution is 1°. [ref. Chapter 5 “Handbook for the Meteorological Observation. Koninklijk Nederlands Meteorologisch Instituut KNMI, De Bilt September 2000.]

The VR station is located only 12 km from the coast and much closer to land than the Lidar buoy, and that is expected to have some effect on the winds, both speed and direction, especially for wind with direction from shore; directions from south-southwest to east-northeast in particular. This means that there can be considerable differences in wind speed and direction at any given time, while the long term overall averages are expected to be approximately the same.

3.3 Evaluation of the collected data

3.3.1 Wave data

The wave data from the Lidar buoy are compared to data from the Waverider at Schouwenbank in time series and scatter plots. The distance of about 20 km between the two locations and the different distance from shore is expected to cause some differences in these shallow waters.

The time series plot in Figure 3.3 and scatter plot in Figure 3.4 compare the significant wave height (Hm0). All peaks in the time series occur at almost exactly the same time, showing good coherence. The average Hm0 values are 1.05 m at the Lidar buoy compared to 0.99 m at Schouwenbank. The difference as well as the scatter with $R^2 = 0.956$ may be attributed to differences between the locations. The water depth is different at the two locations, with SCHB being the shallower, and this would explain why the wave height is systematically lower at SCHB compared to the Lidar buoy at higher sea states, while they are the same at low sea states. The different distance from shore would give lower waves at SCHB when there is wind from shore due to the more limited fetch. Keeping this in mind we see that the Lidar buoy data compares remarkably well to the reference. The correlation is better than in previous months most likely because the sea state has been more stable.

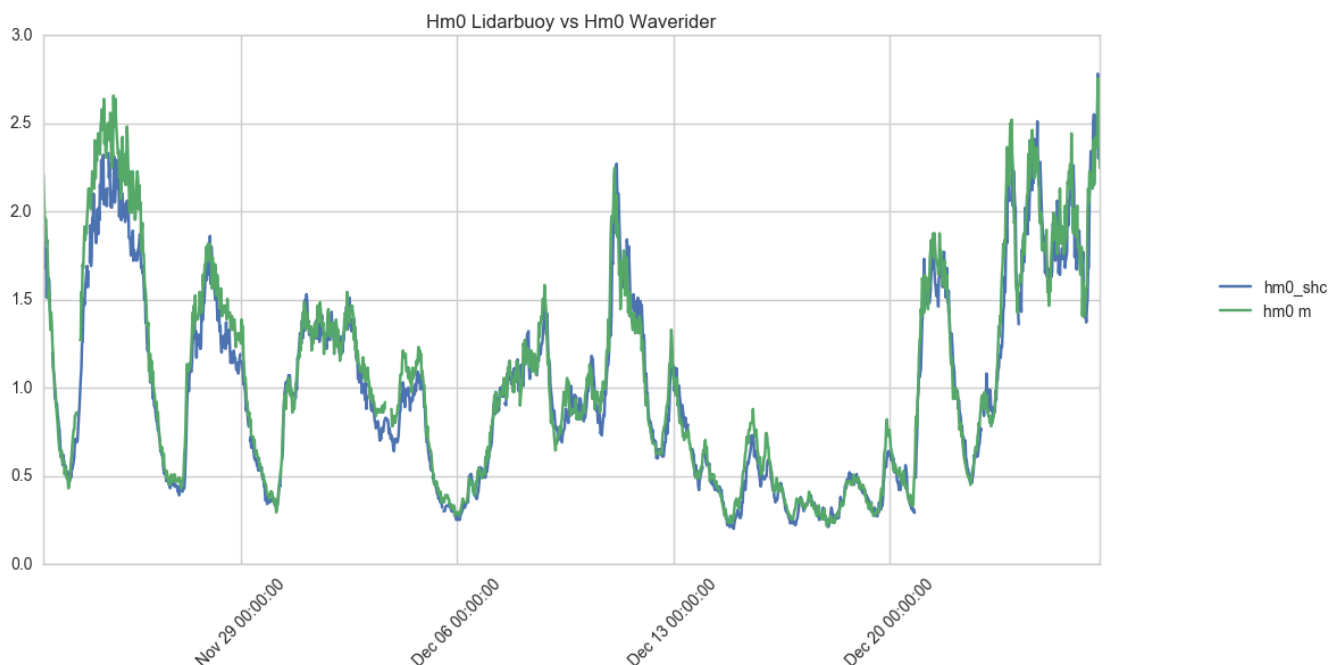


Figure 3.3 Time series plot of significant wave height (Hm0) from the Lidar buoy (green curve) and the Schouwenbank Waverider buoy (blue).

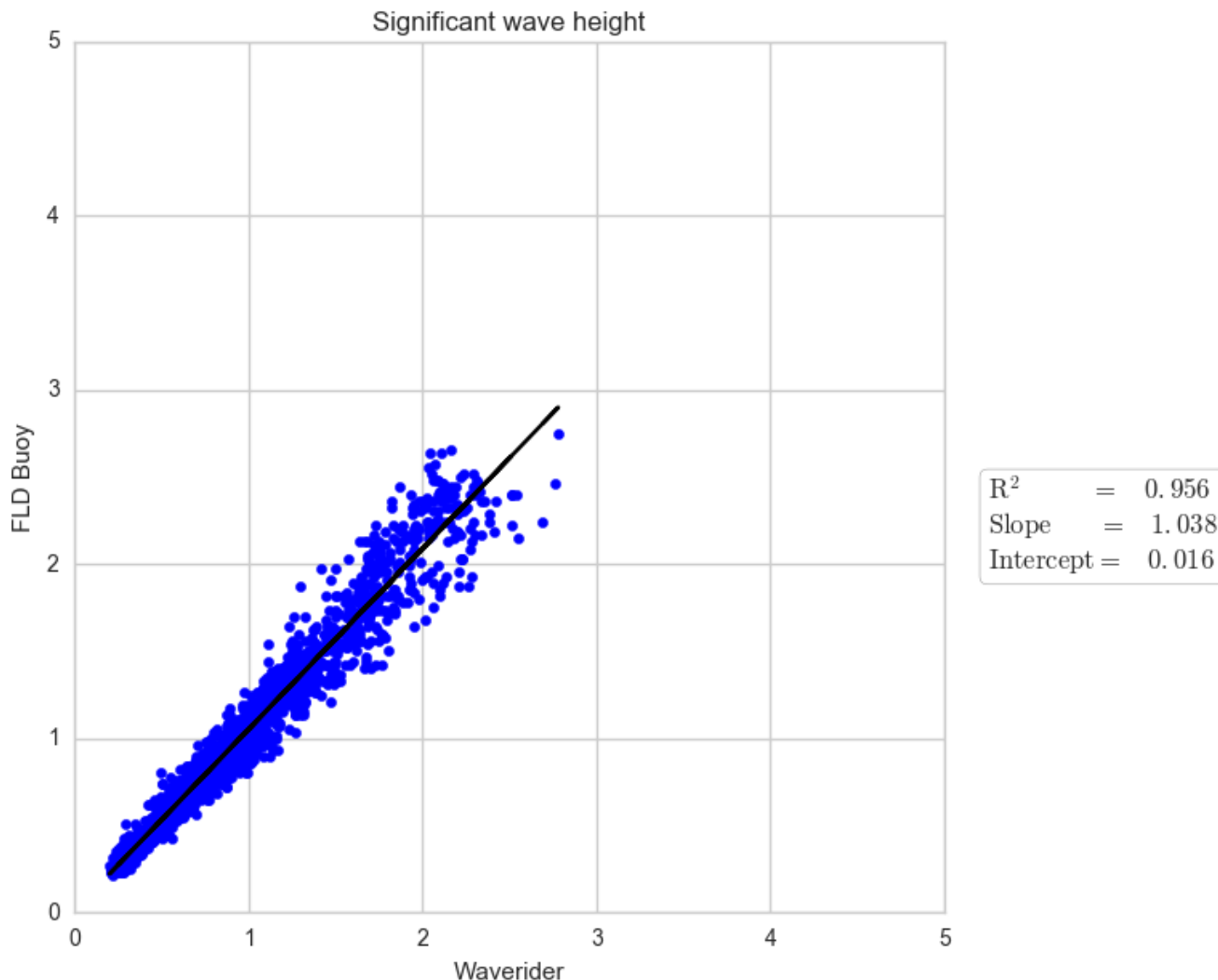


Figure 3.4 Scatter plot comparing Hm0 measured by the Lidar buoy to Hm0 from the Schouwenbank Waverider buoy.

The mean wave period (Tm02) from the Lidar buoy is compared to the Waverider Tm02 in the time series plot in Figure 3.5 and the scatter plot in Figure 3.6. The time series plot shows good coherence and the values appear very similar. The scatter plot shows $R^2 = 0.893$. Some scatter must be expected due to the distance between the stations. The average values of Tm02 are 3.95 s at the Lidar buoy compared to 3.91 s at the Waverider.

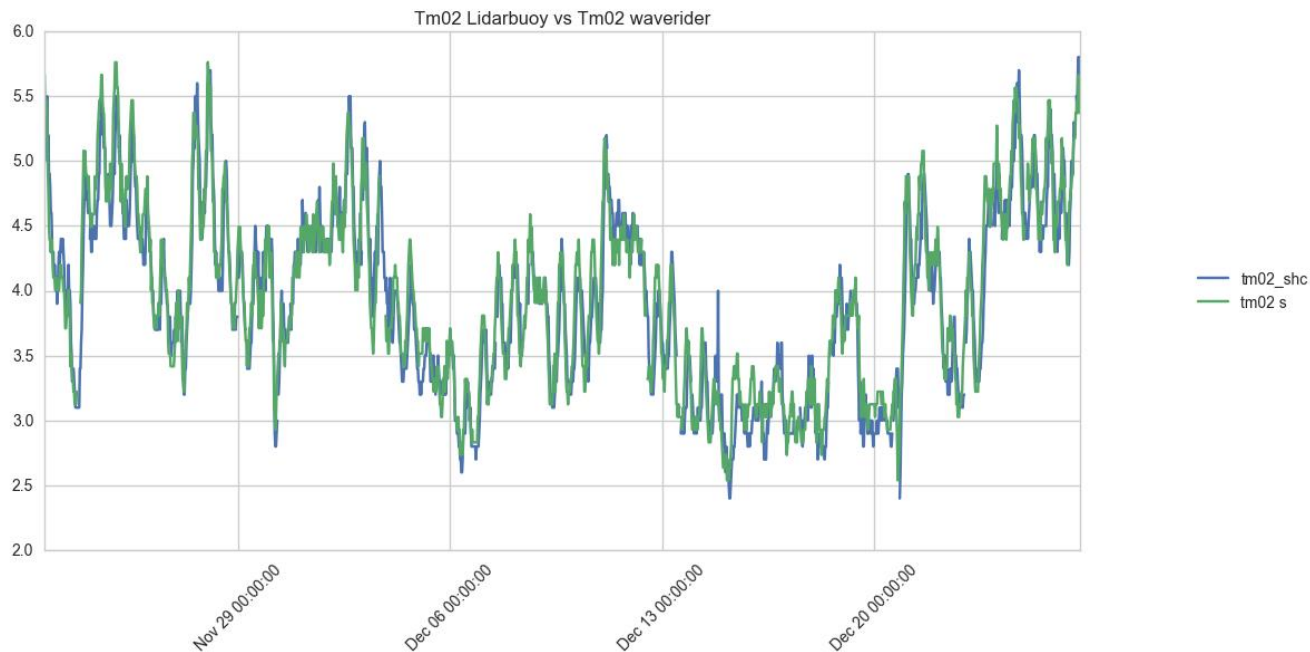


Figure 3.5 Time series plot of mean wave period (Tm02) from the Lidar buoy (green curve) and the Schouwenbank Waverider buoy (blue).

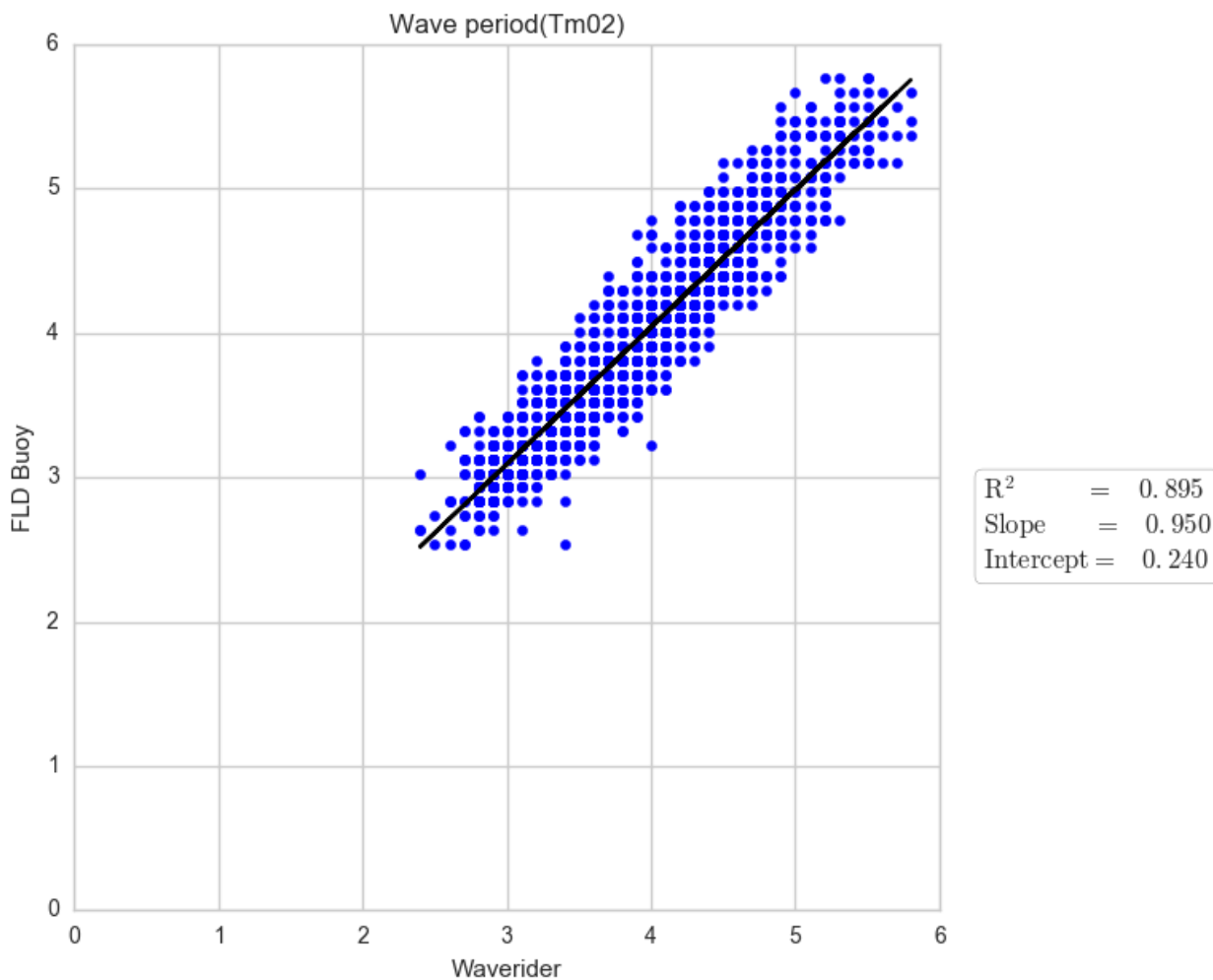


Figure 3.6 Scatter plot comparing Tm02 measured by the Lidar buoy to Tm02 from the Schouwenbank Waverider buoy.

3.3.2 Wind data

The Vlake van de Raan (VR) wind station is located about 28 km away from the Lidar buoy and much closer to shore. The VR station is about 12 km from the nearest shore, while the buoy is 33 km from land. The wind speeds measured at anemometer height, 13.9 m above the mean sea level, have been reduced to 10 m above mean sea level by a factor of 0.95. The horizontal Lidar wind speed data from the lowest cell, at 30 m above the sea surface, have been compared to the wind data from VR adjusted from 10 m to 30 m height by a factor of 1.15. The data series presented in Figure 3.7 show a similar behaviour as the maxima in wind speed at both locations appear at the same time, showing good coherence. On average the buoy show higher average speed at 30 m height than the VR station, the values are 8.39 m/s at the buoy and 8.16 m/s at VR (average of wind speed above 2 m/s).

The scatter plot in Figure 3.8 compares the wind speeds when the VR station speeds exceed 2 m/s. The correlation is seen clearly; $R^2 = 0.974$. The scatter and the slope of 1.033 in the regression line are probably due to the distance between the stations and the differences in the way land effects influence the local wind. Still the wind data compares remarkably well to the reference and better than in previous months. Most likely the reason is that the wind in this period has been more stable than in previous months. This confirms that there is no reason to suspect that the Lidar has not measured the wind speed correctly.

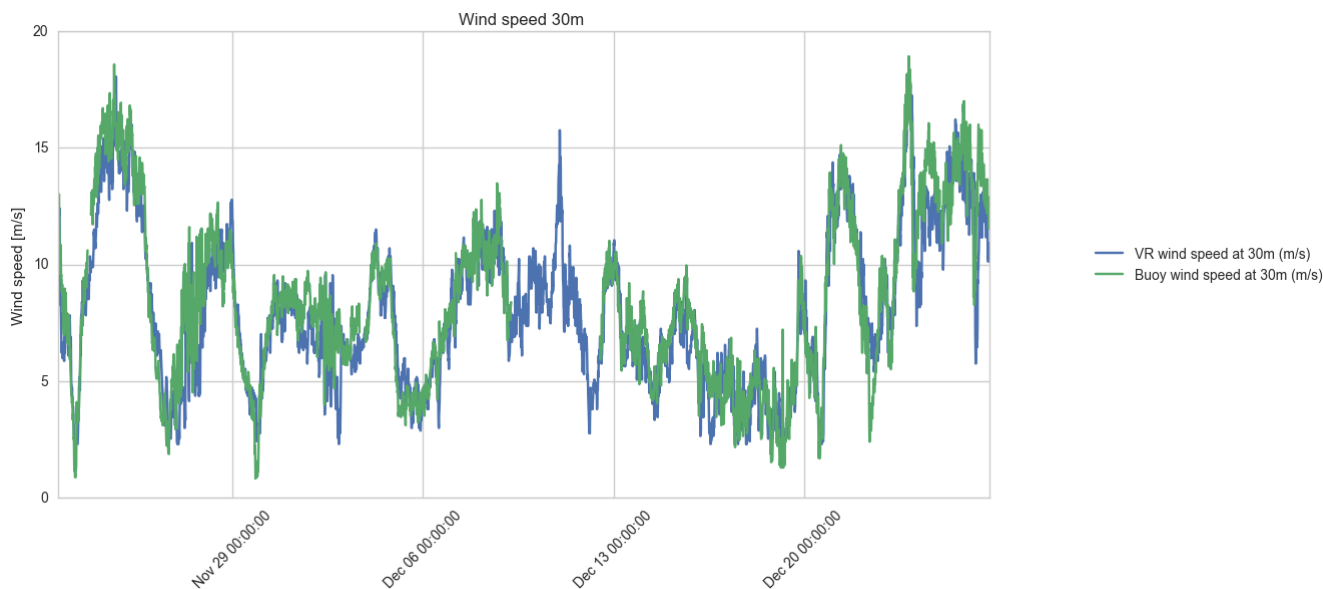


Figure 3.7 Wind speed at 30 m above sea level measured by the Lidar buoy (green curve) compared to wind speed at Vlake van de Raan adjusted to 30 m (blue).

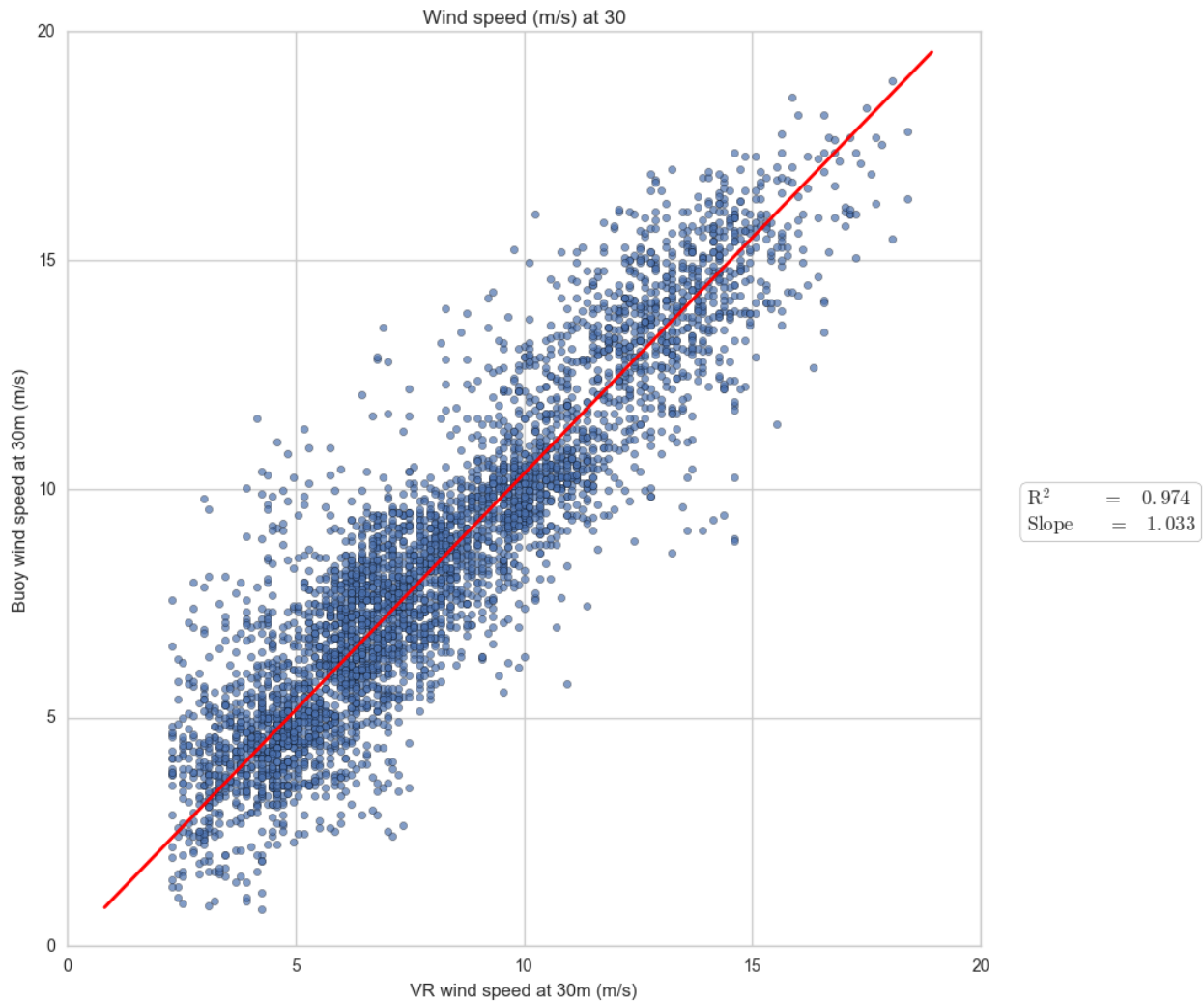


Figure 3.8 Scatter plot comparing the wind speed at 30 m above sea level measured by the Lidar buoy to the wind speed at Vlakte van de Raan adjusted to 30 m a.s.l. (Regression formula: $y = \text{Slope} * x$)

The time series of wind direction are compared in Figure 3.9, which also shows the wind speed at Vlakte van de Raan. Samples with speed less than 2 m/s are excluded. Again we see that there is a general agreement between the measurements, and this is seen also in the scatter plot in Figure 3.10. The offset between the wind directions is calculated as the average of the difference between the wind directions. It should be expected that the wind directions differ at any given time due to the distance between the locations, and this explains the limited scatter seen in the plot. The plot in Figure 3.10 shows that the wind directions in this period were spread on all directions. The correlation is very good taking the distance between the stations into account, correlation factor $R^2 = 0.942$.

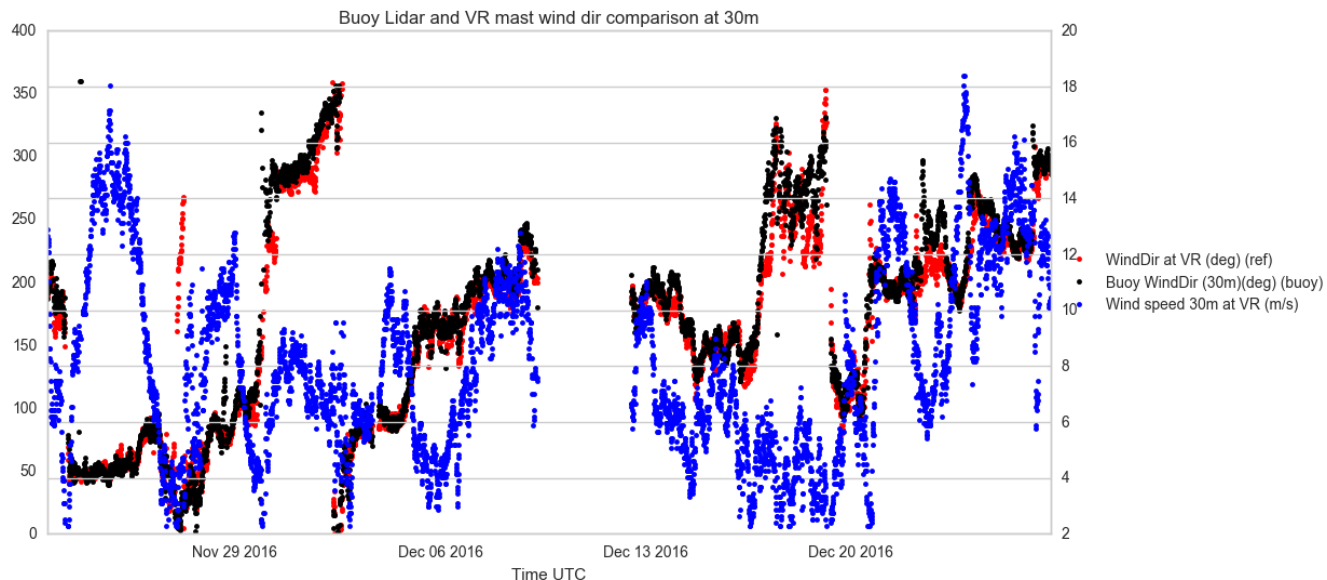


Figure 3.9 Wind direction at 30 m above sea level measured by the Lidar buoy (black dots) compared to wind direction at Vlakte van de Raan. (red). The blue dots show the VR station 10m wind speeds. (Samples with VR wind speed less than 2 m/s are excluded.)

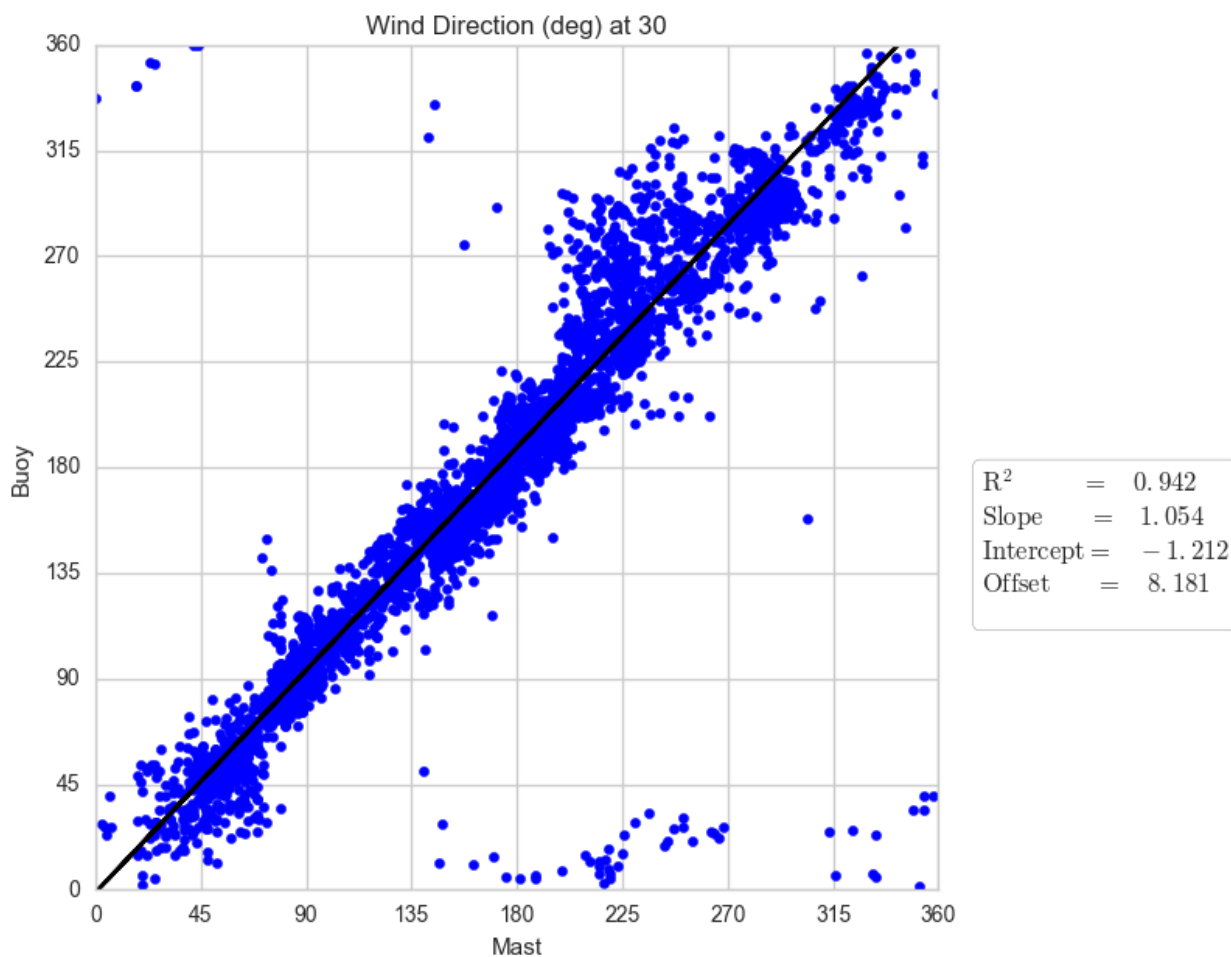


Figure 3.10 Wind direction at 30 m above sea level measured by the Lidar buoy compared to wind direction at Vlakte van de Raan. (Samples with VR wind speed less than 2 m/s are excluded.) (“Offset” is the average difference of directions.)



3.4 Conclusions

The comparisons to the reference station data presented above indicate that the buoy has collected data of good quality for winds and waves. The Seawatch Wind Lidar buoy has transmitted data almost continuously during the month. There are one major and a few short gaps in the Lidar data where the received data are replaced by the “missing data” flag at all heights. Due to the gaps it took 34.229 days to collect 30.5 days of good wind profile data.



Appendix A

DEPLOYMENT SHEET	
Project Name:	Borssele
Project no: C75339	Latitude: 51°42.41388'N (x=502392)
Station name:	Longitude: 3°2.07708'E (y=5728440)
WS buoy no: WS156	Approx. depth: 33 m
PFF numbers: 33920 – 33926	Buoy marking:
Buoy module/sensor	Serial number/ID
Wavesense 3 data logger	279
XSense	0770017B
PMU	346
Vaisala PTB330	K2740014
Compass	1039696
Iridium modem	IMEI: 300125060202800 SIM: 8988169514001092381 MSISDN: 881623489332 MSISDN-C: 881692788814
UHF service radio Adeunis ARF7940BA	B142500101 Addr:11562
UHF service radio Adeunis ARF7940BA	B142500109 Addr: 11570
L3 AIS	Ser.no MMSI. 992572061
Gill wind sensor	14360066
Vaisala air HMP155 temperature/humidity	L3050100
Buoytracker	ID: 730307 Name: Borssele 2 WS156
LIDAR ZephIR300	501
Flashlight	329387
Nortek Current meter	AQP6691/AQD8621
Fuel Cell 1	efoy : 302306-1536-36837 stack : 151010086--00092
Fuel Cell 2	efoy : 302306-1536-36834 stack : 151010086--00088
Fuel Cell 3	efoy : 302305-1444-34726 stack : 151010084--01192
Fuel Cell 4	efoy : 302305-1443-34636 stack : 151010084--01171



CONFIGURATION				
Data transmission interval:	Continuous mode. '			
Listening window	NA			
POWER OPTIONS				
Lead batteries type	4 x 62Ah			
Lithium batteries:	6 x 272Ah			
Fuel cells	4 fuel cells with 10 methanol cartridges 28 litres each.			
DEPLOYMENT HISTORY				
	YEAR	MONTH	DATE	GMT
First measurement in Lot 1 position	2016	07	20	1000
Out of measuring position	2016	12	12	11:20
Last measurement				
Comments:				
Deployment vessel: Sea Bulldog	Recovery vessel:	Multرسالvor 3		
Deployed by: Lars Slettemark	Recovered by:	Lars Slettemark		

Appendix A		DEPLOYMENT/RECOVERY SHEET		
Project Name: Borselle				
Project no: C75339		Latitude: 51°42.41388'N		
Station name: Borselle Lot 1		Longitude: 3°2.07708'E		
WS buoy no: WS157		Approx. depth: 30m		
PFF numbers:		Buoy marking: YES		
Buoy module/sensor		Serial number/ID		
CONFIGURATION				
Data transmission interval:				
Listening window				
POWER OPTIONS				
Lead batteries type				
DEPLOYMENT HISTORY				
	YEAR	MONTH	DATE	GMT
First measurement	2016	february	12	1200
First measurement this deployment	2016	december	12	1205
Out of measuring position				
Last measurement				
Comments: WS157 attached to the Borselle Lot 1 mooring.				
WS157 deployment vessel: Multrasalvor 3		WS157 deployed by: Lars Slettemark		