



Workshop Hollandse Kust (zuid) Wind Farm Zone

Legal framework and financial incentive

24th November 2016

Bert Wilbrink,
Ministry of Economic Affairs



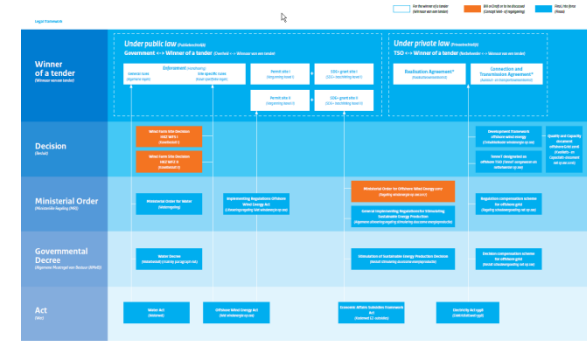
Overview presentation

- Legislation and evaluations
- National Structural Vision (extension to 10 NM off the coast)
- Wind Farm Site Decisions I and II Hollandse Kust (zuid)
- Wind Farm Site Decisions III and IV Hollandse Kust (zuid)
- Financial incentive (SDE+ 2017, Borssele V, Innovation Site)
- Shipping in the wind farms
- Hollandse Kust (noord)



Legislation and evaluations

- Applicable codes: the generic technical requirements will be established as a technical code requirement (public law)
- TenneT officially appointed
- Rijkswaterstaat will be appointed for enforcement
- Evaluations until Q1 2017:
 - Compensation from TenneT
 - Wind Farm Site Decisions
 - SDE+
 - Site studies





National Structural Vision (10-12 NM)

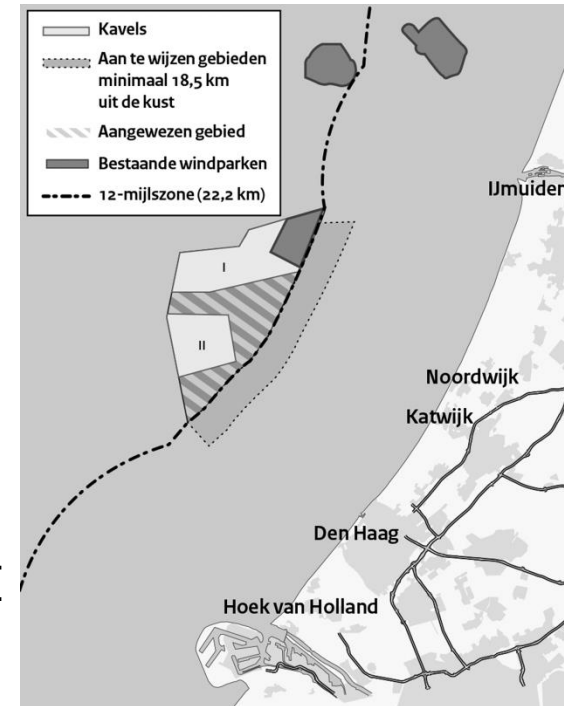
- Final National Waterplan 2016-2021 December 14, 2015: reconfirmation all WFZ's
- Policy change for shipping within the wind farms
- Draft National Structural Vision (extension to 10 NM off the coast) July 1, 2016
- Debate House of Representatives, November 17, 2016
- Final National Structural Vision before end of 2016





Hollandse Kust (zuid) I and II Wind Farm Site Decisions, procedure

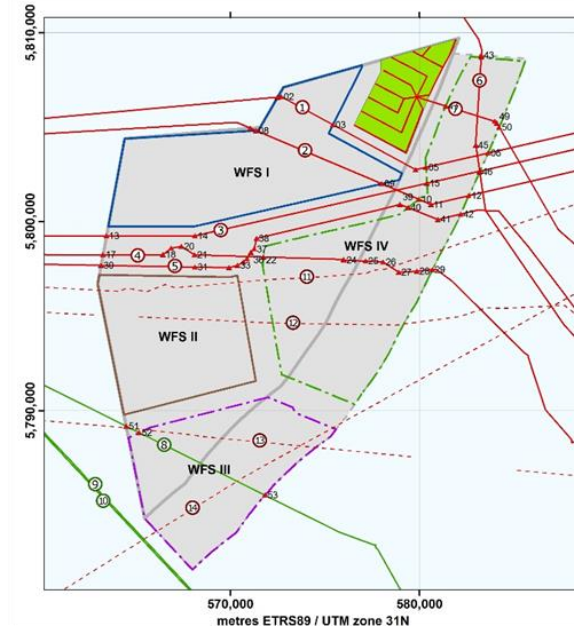
- Consultation draft HKWFSDs I and II finished September 29, 2016
- Positive mandatory advisory report from The Netherlands Commission for Environmental Assessment (NCEA) 31th October 2016
- 94 opinions and 6 advises from governments
- Final HKWFSDs I and II expected end of 2016 (appeal within 6 weeks)
- Ruling council of State about HKWFSDs I and II expected mid 2017





Hollandse Kust (zuid) Wind Farm Site Decisions I and II changes compared to BWFSDs

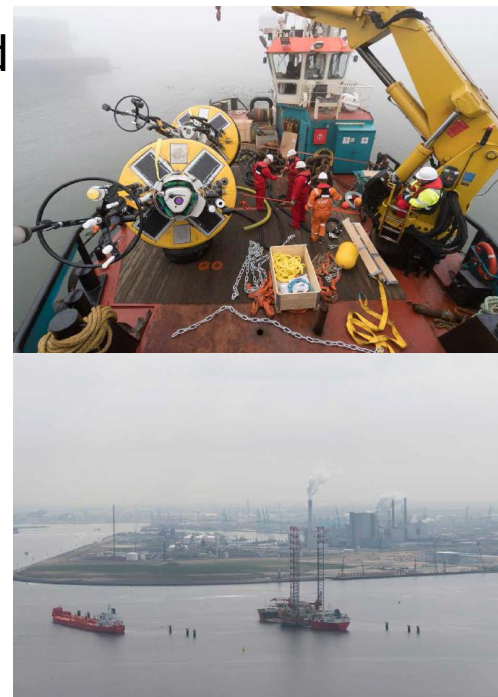
1. Archaeology: no in situ remains prehistoric settlements within HKWFSs I and II, 100 m buffer zones around known or found objects and magnetic anomalies (additional research)
2. Minimal 6 MW turbines (no maximum), but maximum tip 251 m and max swept area.
3. Higher maximum sound levels under water during piling work
4. Identification marks and beacons for air traffic (no flashing, dimmable), carry out an aeronautical study now for less lightning





Wind Farm Site Decisions I/II Hollandse Kust (zuid)

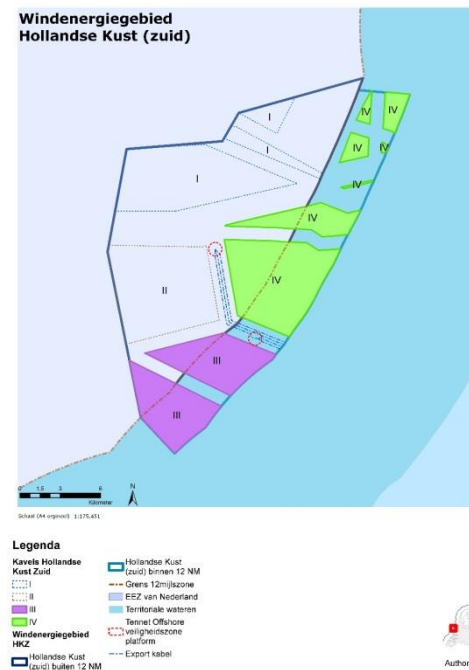
- Demonstrable efforts to design and build the wind farm in such a way that it actively enhances the sea's ecosystem (action plan).
- Demonstrable effort to design, build, and operate the wind farm, in such a manner that the wind farm actively contributes to strengthening the local and regional economy (action plan).
- Environmental monitoring within WOZEP (environmental monitoring and evaluation programme 2016-2021 from the Government)





Hollandse Kust (zuid) Wind Farm Site Decisions III and IV, procedure

- Consultation memorandum scope and level of detail EIA expected end of 2016
- Before summer 2017 six weeks consultation draft WFSDs expected
- Q3 2017 final WFSDs expected (appeal within 6 weeks)
- Ruling council of State about HKWFSDs III and IV expected Q1 2018





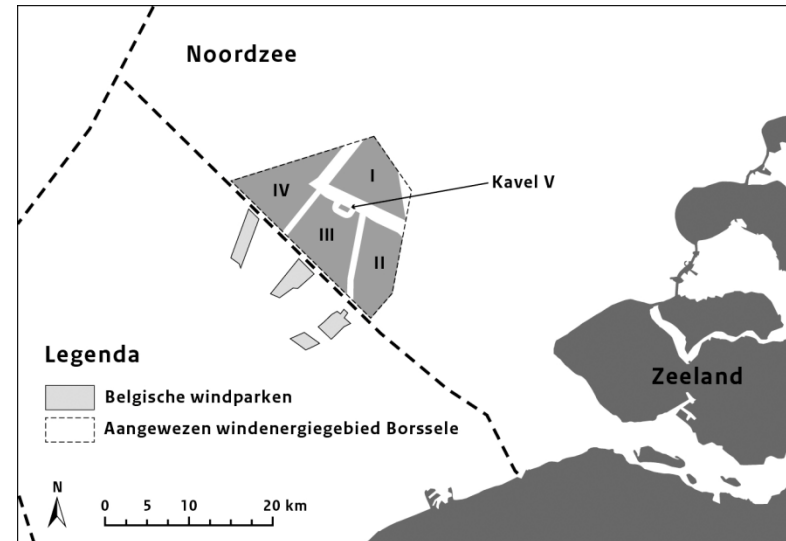
Financial incentive (SDE+ 2017)

- For HKZWFS I and II the base sum is capped at €107.50
- Ministerial Order for Offshore Wind Energy 2017 is to be published
- Timing depending on:
 - Evaluation
 - Small technical changes in 'Stimulating of Sustainable Energy production Decision' (AMvB SDE+)
 - Elections 15th March 2017
 - National Structural Vision (10-12 NM) in parliament (within six month after final National Structural Vision)
 - Ruling council of State about HKWFSDs I and II (expected mid 2017)



Financial incentive (Borssele V, Innovation site)

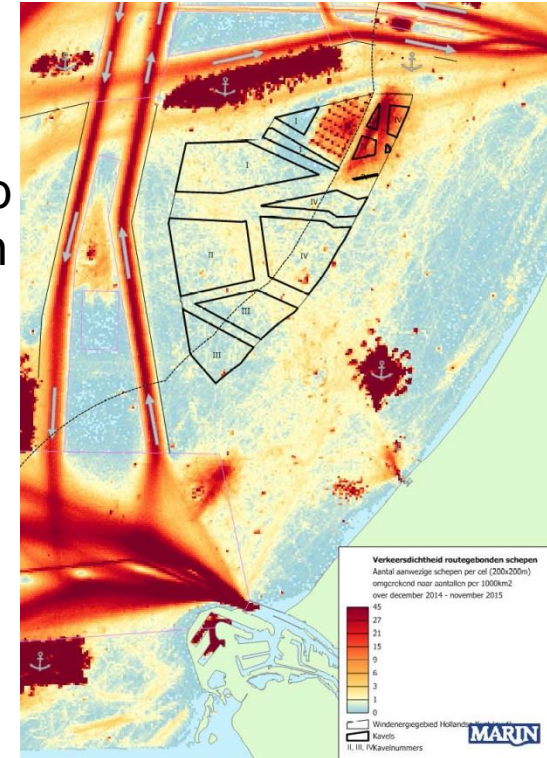
- Matchmaking this afternoon
- Site physically and contractually separated from regular wind farm, co-location model
- Tender:
 - Ranking based on 4 qualitative criteria instead of price (1 winner)
 - Open October 2017, closing January 2018
 - Decision April 2018
 - Platform Beta August 31, 2020





Shipping in the wind farms

1. No shipping lanes in Hollandse Kust (zuid)
2. As of spring 2017, it is possible for vessels up to 24 meters under strict conditions to sail through wind farms
3. These rules are currently being made in consultation with the various stakeholders (in particular, wind industry and fisheries)
4. The new wind farms will be closed during construction and therefore only open for passage and shared when the construction is completed.



Hollandse Kust (noord)

- TenneT has started it's consenting procedure, visiting stakeholders.
- Consultation memorandum scope and level of detail EIA offshore grid is expected end Q1 2017
- Consultation memorandum scope and level of detail EIA WFSDs is expected end Q2 2017

