

Date 14 April 2016
Your reference WOZ150011
Our reference ECN-WIND-2016-064

Contact
T +31 224 56 4086
verhoef@ecn.nl

P.O. Box 1, 1755 ZG Petten, The Netherlands
Netherlands Enterprise Agency (RVO.nl)
Croeselaan 15
3521 BJ UTRECHT
THE NETHERLANDS

Subject Supply of Meteorological and Oceanographic data for Borssele Wind Farm Zone Period 12 February - 14 March 2016 (Lot2)

Dear Sir/Madam,

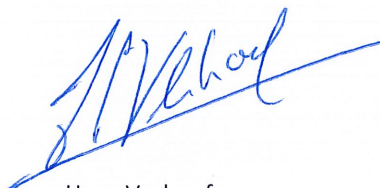
The following two Meteorological and Oceanographic data reports produced by Fugro OCEANOR AS for the newly Lot2 measurement campaign have been reviewed by ECN Wind Energy:

1. Supply of Meteorological and Oceanographic data at Borssele Wind Farm Zone (BWFZ)
– Lot2 : Monthly Progress Report : 12 February – 14 March 2016.
Reference No: C75339_Lot2_MPR01_R1
2. Supply of Meteorological and Oceanographic data at Borssele Wind Farm Zone (BWFZ)
– Lot2 : Validation report : 12 February – 14 March 2016.
Reference No: C75339_Lot2_VAL01_R1

ECN has found that the above referenced reports provide a sufficient detail for potential users of the provided data to perform analysis.

Please note that the provided dataset for Lot 2 (Period 1 , Version 1 dd. 20140401) can be retrieved via the website : www.WindOpZee.net.

Yours sincerely,



Hans Verhoef
Project Leader Measurements

Petten
Postbus 1
1755 ZG Petten

Westerduinweg 3
1755 LE Petten
The Netherlands

T +31 88 5 154 949
F +31 88 5 154 480
www.ecn.nl

VAT NL001752625B01
Trade register 41151233

THE NETHERLANDS ENTERPRISE AGENCY (RVO)



Supply of Meteorological and Oceanographic data at Borssele Wind Farm Zone (BWFZ) - Lot 2
Monthly Progress Report: 12 February - 14 March 2016

Reference No: C75339_Lot2_MPR01_R1
13 April 2016

Fugro OCEANOR AS
Pirsenteret, P.O. Box 1224, Sluppen, N-7462 Trondheim, Norway
Tel: +47 73545200 Fax: +47 73545201, e-mail: trondheim@oceanor.com

Supply of Meteorological and Oceanographic data at Borssele Wind Farm Zone (BWFZ) - Lot 2:
C75339_Lot2_MPR01_R1

Rev	Date	Originator	Checked & Approved	Issue Purpose
0	31.03.2016	Lasse Lønseth	Arve Berg	Preliminary report for client review.
1	13.04.2016	Lasse Lønseth	Arve Berg	Final report.

Rev 1 – 13 April 2016	Originator	Checked & Approved
Signed:		

This report is not to be used for contractual or engineering purposes unless the above is signed where indicated by both the originator of the report and the checker/approver and the report is designated 'FINAL'.

TABLE OF CONTENT

SUMMARY	1
1. INTRODUCTION.....	2
2. Instrumentation and measurement configuration	2
3. Summary of activities	6
3.1 Buoy operation.....	6
3.2 Health, Safety and Environment.....	6
4. Results	7
4.1 Summary of results and data return	7
4.2 Presentation of the received data.....	7
4.2.1 Meteorological data	7
4.2.2 Wave data	9
4.2.3 Wind profile data.....	12
4.2.4 Current velocity profile data.....	24

Appendix A: Buoy deployment record



SUMMARY

Two Seawatch Wind Lidar buoys are deployed at the Borssele Wind Farm Zone (BWFZ) at positions labelled "Lot 1" and "Lot 2". This report concerns Lot 2. The buoy WS156 was deployed at Lot 2 on 12 February 2016 at 15:25 UTC. The multicat type workboat Multirasalvor 3 was used for the operation.

The buoy has delivered data continuously since the deployment. This monthly report summarizes the activities and data collected during the period 12 February – 14 March 2016, and presents the data in time series plots.

1. INTRODUCTION

The Seawatch Wind Lidar buoy with serial no. WS156 is deployed at the Borssele Wind Farm Zone (BWFZ) Lot 2 in the Dutch sector of the North Sea. The buoy was deployed on 12 February 2016 at 15:25 with the bottom mooring weight at position 51° 38.778' N, 2° 57.0846' E. The workboat Multirasalvor 3 was used for this operation.

This report presents project progress and results during the period 12 February – 14 March 2016, and the data which have been transmitted to shore via the Iridium satellite system in this period. The data recovery percentages for this period are also presented. Due to some very minor gaps in the data it took 30.812 days to collect 30.5 days of good wind profile data from the Lidar buoy.

The time reference used in this report is UTC.

2. Instrumentation and measurement configuration

The buoy is a Seawatch Wind Lidar Buoy based on the original Seawatch Wavescan buoy design with the following sensors:

- Wavesense: 3-directional wave sensor
- Xsens 3-axes motion sensor
- Gill Windsonic M acoustic wind sensor
- Vaisala PTB330A air pressure sensor
- Vaisala HMP155 air temperature and humidity sensor
- Nortek Aquadopp 600kHz current profiler.
- ZephIR 300S Lidar.

The buoy with mooring as deployed is presented in Figure 2.1.

The measurement setup is detailed in Table 2-1. Details of sensor types and serial number can be found in Appendix A.

Table 2-1 Configuration of measurements by the Seawatch Wind Lidar buoy at Borssele Wind Farm Zone (BWFZ) – Lot 2.

Instrument type	Sensor height (m)	Parameter measured	Sample height ²⁾ (m)	Sampling interval (s)	Averaging period (s)	Burst interval (s)	Transmitted?
Wavesense 3	0	Heave, pitch, roll, heading	0	0.5	Time series duration: 1024 s	600	No
		Sea state parameters (1)	0	600	1024	600	Yes
Xsens		Heave, east, north acceleration, q0, q1, q2, q3 (attitude quaternion)	0	0.5	N/A	3600	No
Gill Windsonic M	4.1	Wind speed, wind direction	4.1	1	600	600	Yes
Vaisala PTB330A	0.5	Air pressure	0.5	30	60	600	Yes
Vaisala HMP155	4.1	Air temperature Air humidity	4.1	5	60	600	Yes
Nortek Aquadopp	-1	Current speed and direction profile, water temperature (at 1 m depth)	-4 -6 ... -30 (14 levels)	N/A	600	600	Yes
ZephIR 300S Lidar	2	Wind speed and direction at 10 heights (The 11 th level, the so called reference level which is not configurable, is also located at 40 m and referred to as 40.0 Ref.)	30.0 40.0 40.0 ref 60.0 80.0 100.0 120.0 140.0 160.0 180.0 200.0	$\approx 17.4 \text{ s}^{1)}$	600	600	Yes

¹⁾ This is the approximate time between the beginning of one sweep of the profile and the next one, the interval may vary slightly. The ZephIR sweeps one level at a time beginning at the lowest one, and after the top level has been swept it uses some time for calculations and re-focusing back to the lowest level for a new sweep.

²⁾ Height relative to actual sea surface.

Table 2.2 Definitions of wave parameters presented in this report

H	Individual wave height
Hmax	= Max(H): Height of the highest individual wave in the sample, measured from crest to trough
m0, m1, m2, m4, m-1, m-2	Moments of the spectrum about the origin: $\int f^k S(f) df$ where $S(f)$ is the spectral density and the wave frequency, f , is in the range 0.04 - 0.50 Hz
Hm0	Estimate of significant wave height, H_s , $Hm0 = 4\sqrt{m0}$
Tp	Period of spectral peak = $1/f_p$, The frequency/period with the highest energy
Tm01	Estimate of the average wave period; $Tm01 = m0/m1$
Tm02	Another estimate of the average wave period; $Tm02 = \sqrt{\frac{m0}{m2}}$
ThTp	Mean wave direction at the spectral peak ("The direction of most energetic waves")
Mdir	Wave direction averaged over the whole spectrum
	Directions are given in degrees clockwise from north, giving the direction the waves come from. (0° from north, 90° from east, etc.)

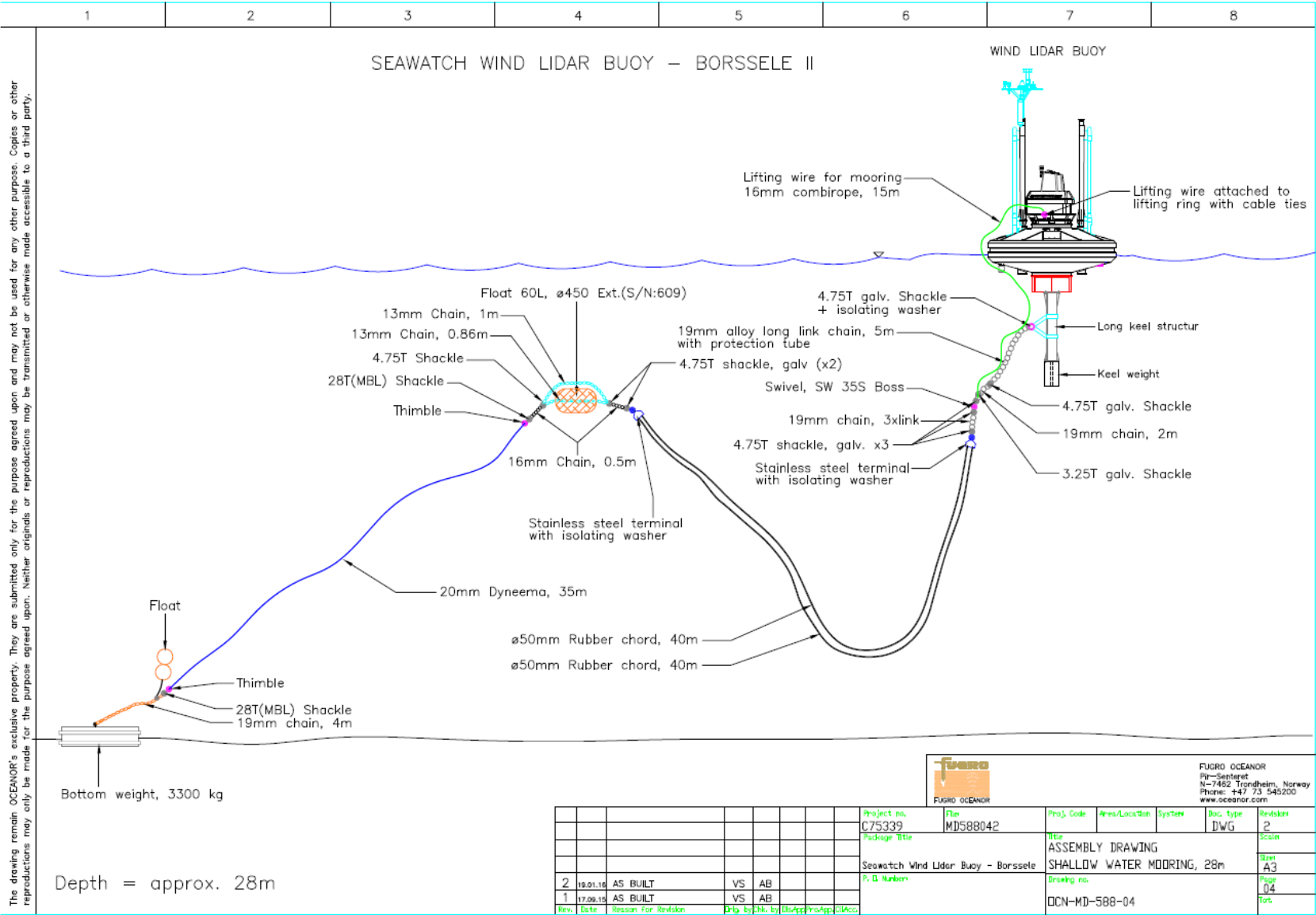


Figure 2.1 Mooring design for the Wind Lidar Buoy as deployed at Borssele Wind Farm Zone (BWFZ) Lot 2.

3. Summary of activities

3.1 Buoy operation

The Seawatch Wind Lidar buoy with serial no. WS156 was deployed at the Borssele Wind Farm Zone (BWFZ) Lot 2 in the Dutch sector of the North Sea. The buoy was deployed on 12 February 2016 at 15:25 with the bottom mooring weight at position 51° 38.778' N, 2° 57.0846' E. The workboat Multirasalvor 3 was used for this operation. The sounder depth was approximately 28 m.

Good data were received from 12 February 2016 at 16:20, and this reporting period extends to 14 March 2016 at 21:40 when 30.5 days of good wind profile data had been collected.

3.2 Health, Safety and Environment

There were no incidents, near misses or accidents in connection with the deployment operation on 12 February 2016.

4. Results

4.1 Summary of results and data return

The buoy transmitted data continuously from all sensors from 12 February 2016 at 16:20 until 14 March 2016 at 11:40. There are a few short gaps in the Lidar data where the received data are replaced by the “missing data” flag at all heights. The gaps are mainly single profile dropouts in the Lidar data only. The longest gap lasted from 23:50 on 22 February to 05:00 on 23 February. Due to the gaps it took 30.812 days to collect 30.5 days of good wind profile data.

The number of hours of good data compared to the total obtainable hours of data is presented in Table 4-1.

Table 4-1 Data return during the period 12 February 2016 at 16:20– 14 March 2016 at 11:40.

Measurement device	Length of data period (days)	Length of data set (days)	Average availability (%)
Lidar wind profile sensor	30.812	30.500	98.99
Wave sensor	30.812	30.597	99.14
Current velocity and direction sensor	30.812	30.632	99.17
Atmospheric pressure sensor	30.812	30.639	99.28
Air temperature sensor	30.812	30.639	99.28

4.2 Presentation of the received data

The following presentations show good data transmitted from the buoy via Iridium satellite during the period 12 February 2016 at 16:20 – 14 March 2016 at 11:40, giving a total wind profile data set of 30.5 days.

4.2.1 Meteorological data

The following plots present the air pressure, air temperature, and sea surface temperature. The sensors performed well in this period.

The water temperature sensor is part of the current profile sensor, Aquadopp, and data recovery for water temperature is the same as for current profile data.

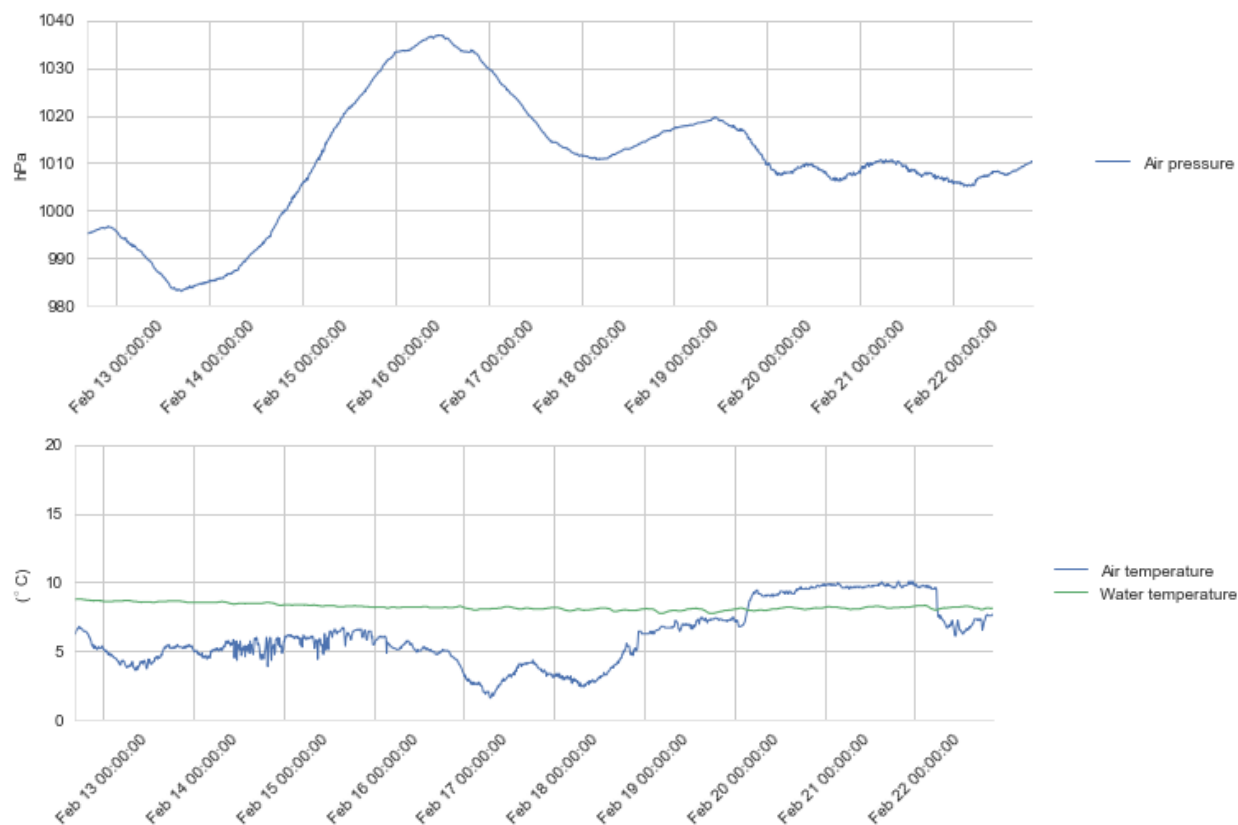


Figure 4.1 Time series plots of air pressure (upper panel), air and water temperature (lower panel), 12 - 22 Feb 2016.



Figure 4.2 Time series plots of air pressure (upper panel), air and water temperature (lower panel), 22 Feb – 4 Mar 2016.

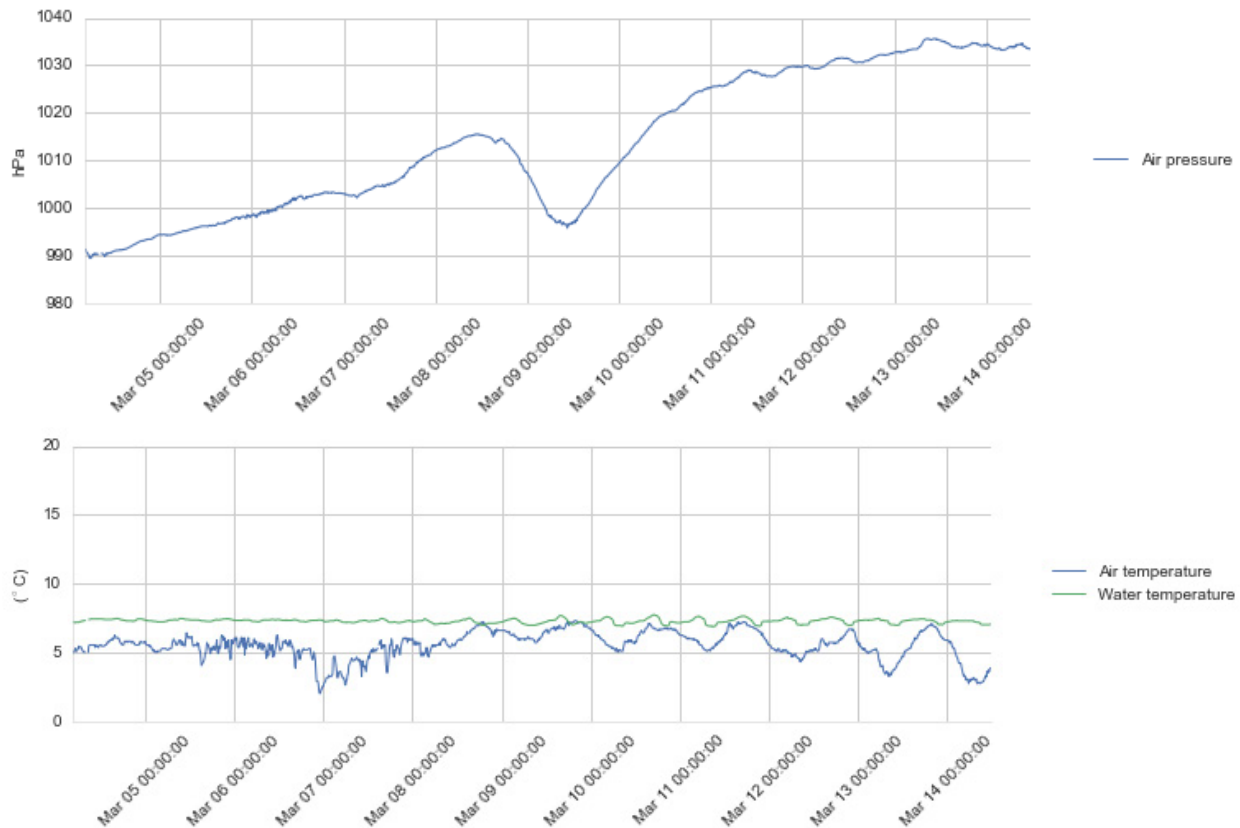


Figure 4.3 Time series plots of air pressure (upper panel), air and water temperature (lower panel), 4 - 14 Mar 2016.

4.2.2 Wave data

The next plots present wave height, period and direction. The wave sensor has generally functioned well. Some dropouts shown in the plots are due to loss of data within the first half hour after rebooting of the buoy.

The highest significant wave height (Hm0) measured in this period is 3.55 m from a north-northwesterly direction on 21 February at 13:40. The highest single wave with a height of 5.80 m was observed at the same time.

The variations in wave height agree well with the observed wind speeds. The average wave period parameters Tm01 and Tm02 show semidiurnal variations which can be explained by the shift in frequency when the waves are travelling along with or opposing the current direction, since the tidal current direction varies in a semi-diurnal pattern.

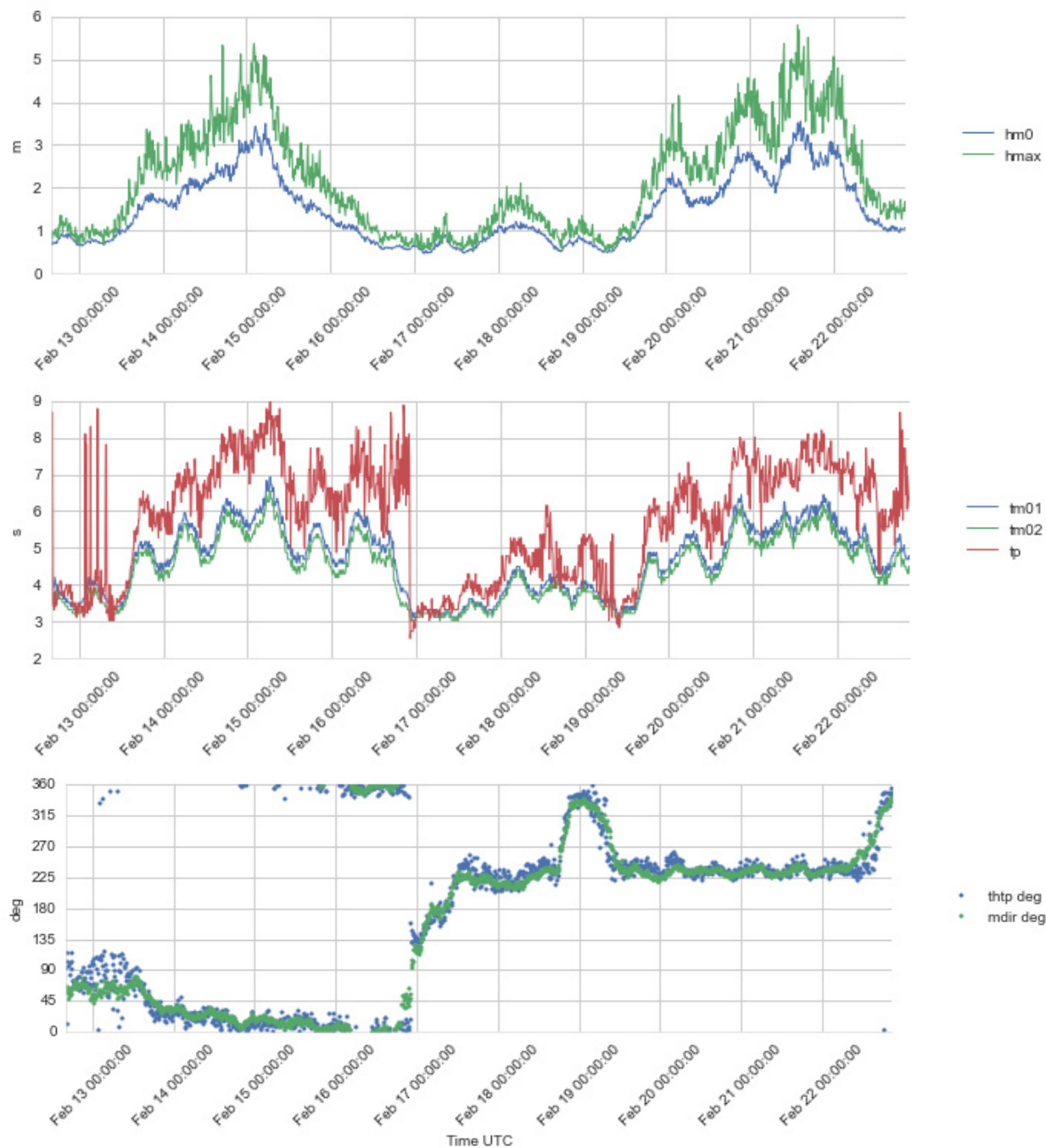


Figure 4.4 Time series plots of wave height (H_{m0} and H_{max}) (upper panel), wave period (T_{m01} , T_{m02} and T_p) (second panel), and wave direction ($ThTp$ and $Mdir$) (lower panel), 12 - 22 Feb 2016.

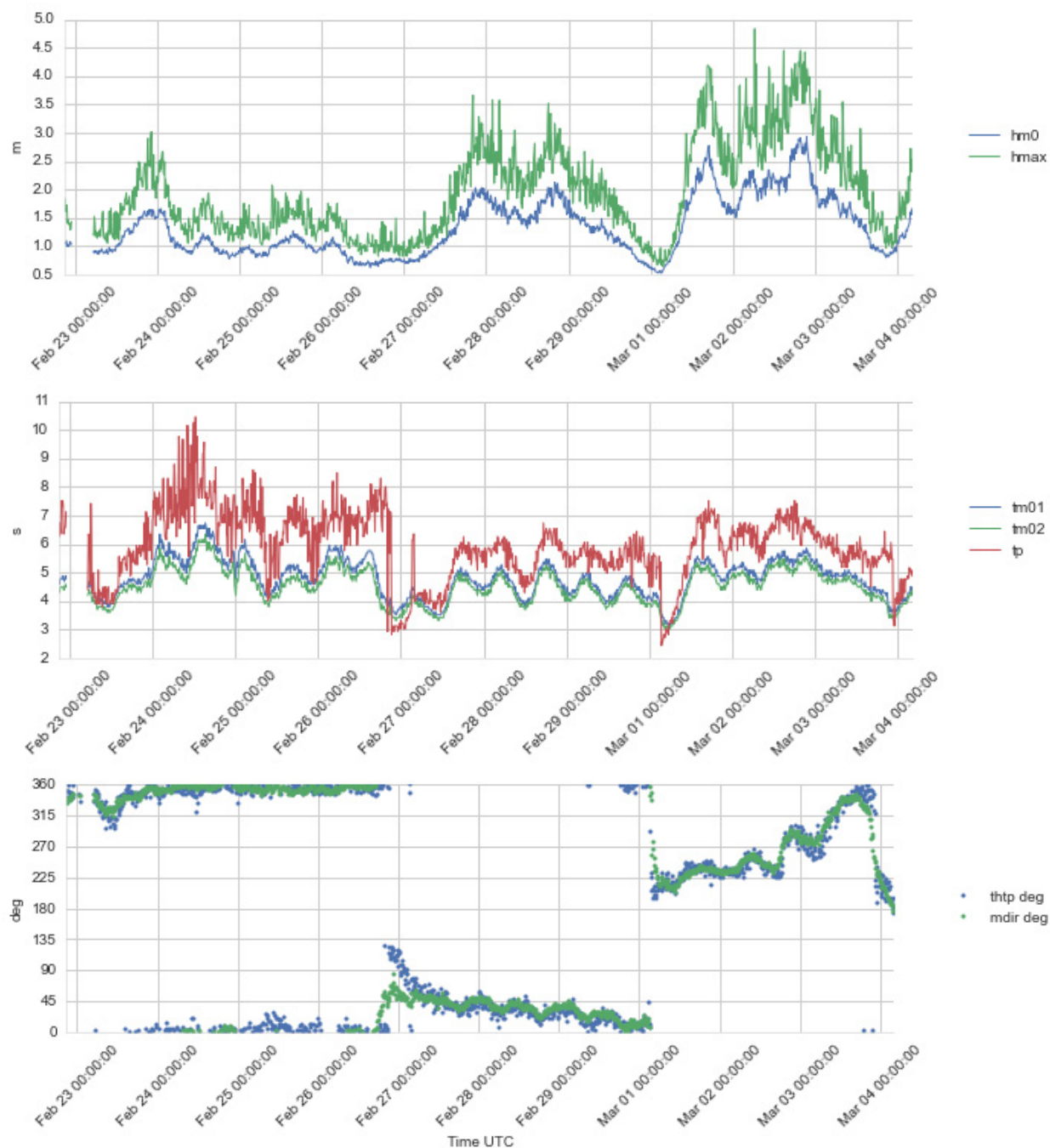


Figure 4.5 Time series plots of wave height (H_{m0} and H_{max}) (upper panel), wave period (T_{m01} , T_{m02} and T_p) (second panel), and wave direction ($ThTp$ and $Mdir$) (lower panel), 22 Feb – 4 Mar 2016.

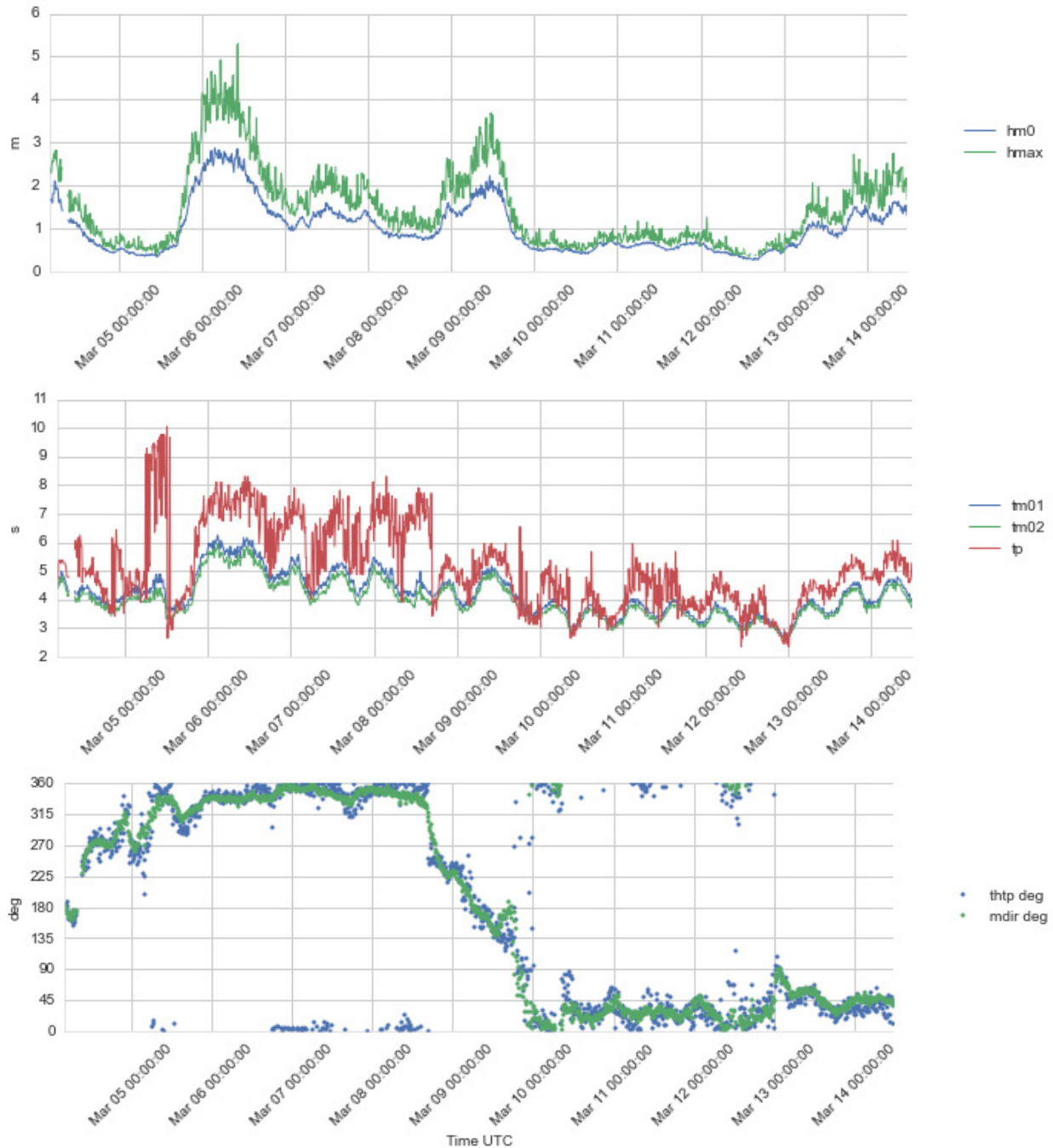


Figure 4.6 Time series plots of wave height (H_{m0} and H_{max}) (upper panel), wave period (T_{m01} , T_{m02} and T_p) (second panel), and wave direction ($ThTp$ and $Mdir$) (lower panel), 4 - 14 Mar 2016.

4.2.3 Wind profile data

In the wind and wave direction plots 0° and 360° indicate direction from the north.

The following plots show the wind speed and direction data from the Gill wind sensor mounted at 4 m height on the buoy mast. The data from the Gill sensor are generally good without dropouts. In this period 10 min mean wind speeds up to 16.8 m/s and gusts up to 22.5 m/s were measured at 4 m above the sea surface. The average wind speed at this height was 7.6 m/s.

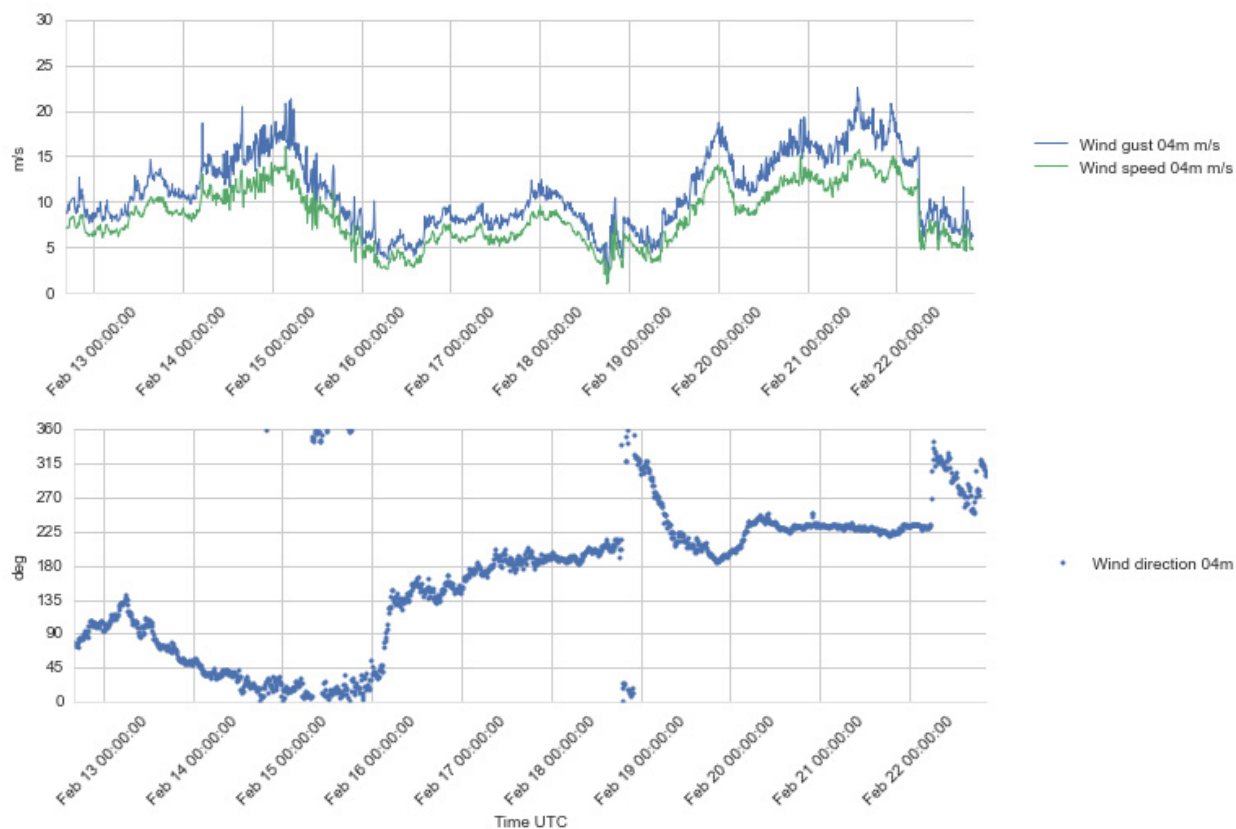


Figure 4.7 Plots of wind speed and gust (upper), and wind direction (lower) at 4 m a.s.l., 12 - 22 Feb 2016.



Figure 4.8 Plots of wind speed and gust (upper), and wind direction (lower) at 4 m a.s.l., 22 Feb - 4 Mar 2016.

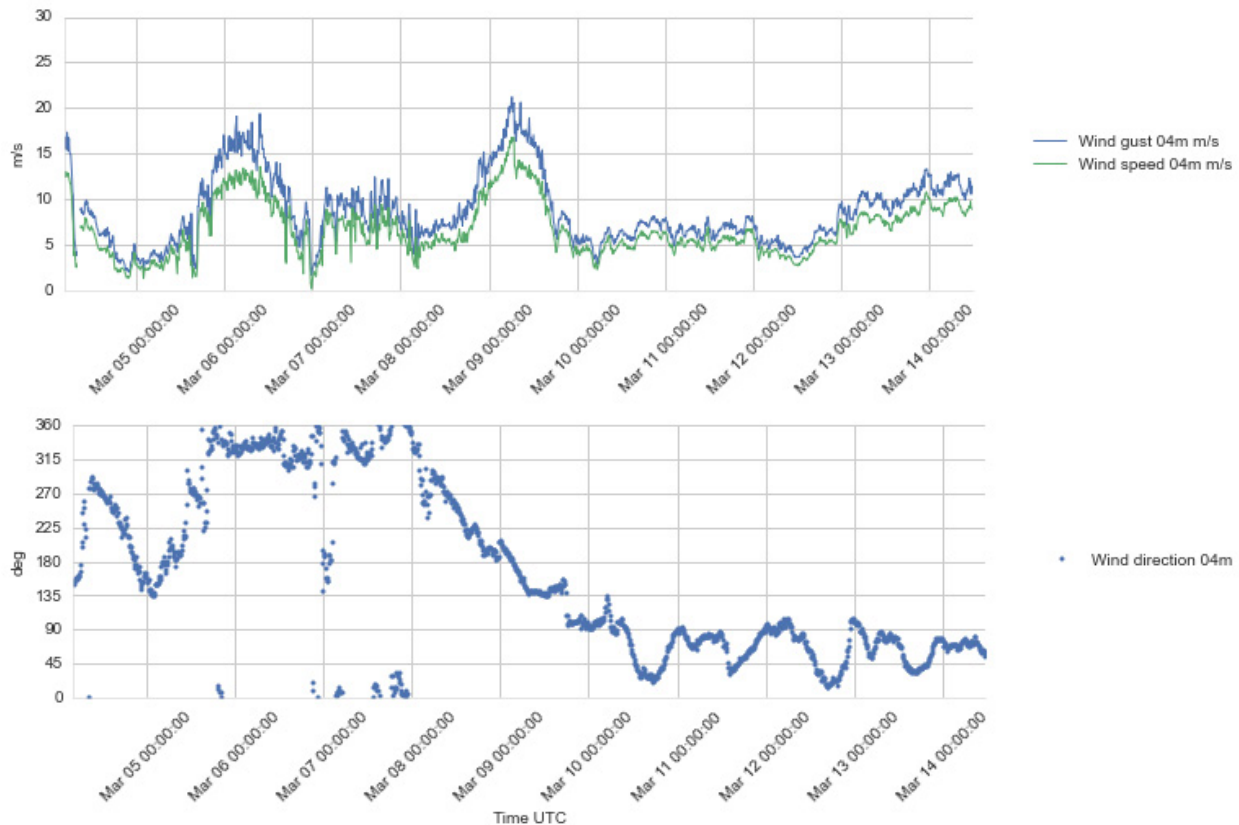


Figure 4.9 Plots of wind speed and gust (upper), and wind direction (lower) at 4 m a.s.l., 4 - 14 Mar 2016.

The wind profiling data from the Lidar are presented in the following plots showing the time series of 10 min. mean wind for each individual level. Plots of the derived parameters Inflow Angle and Turbulence Intensity are also presented¹.

The Inflow Angle (IA) is the angle of the 3-dimensional wind vector based on the ten minute averaged values of the horizontal and vertical wind velocity components. IA can be positive or negative; a positive IA means that the wind vector has an upward directed vertical component. The Turbulence Intensity (TI) is defined as $TI = \sigma / \bar{u}$ where σ is the standard deviation and \bar{u} is the mean of the wind speed for a 10-min period. Note that this definition frequently gives relatively high values in situations with low mean wind speed, which is noticeable in the plots.

The 180° directional ambiguity in the Lidar wind directions has largely been resolved using a correction with directions from the Gill wind sensor as ground truth.

The highest observed horizontal mean wind speed during this month varies from 20.2 m/s at 30 m to 27.7 m/s at 200 m above the surface. These maxima were measured on 21 February 2016 between 13:40 and 19:40. The wind direction was around 215° at that time.

¹ TI is not included in the regular Iridium transmissions, and only received through the dialup connection. Consequently, TI is missing for some periods when the dialup connection failed.

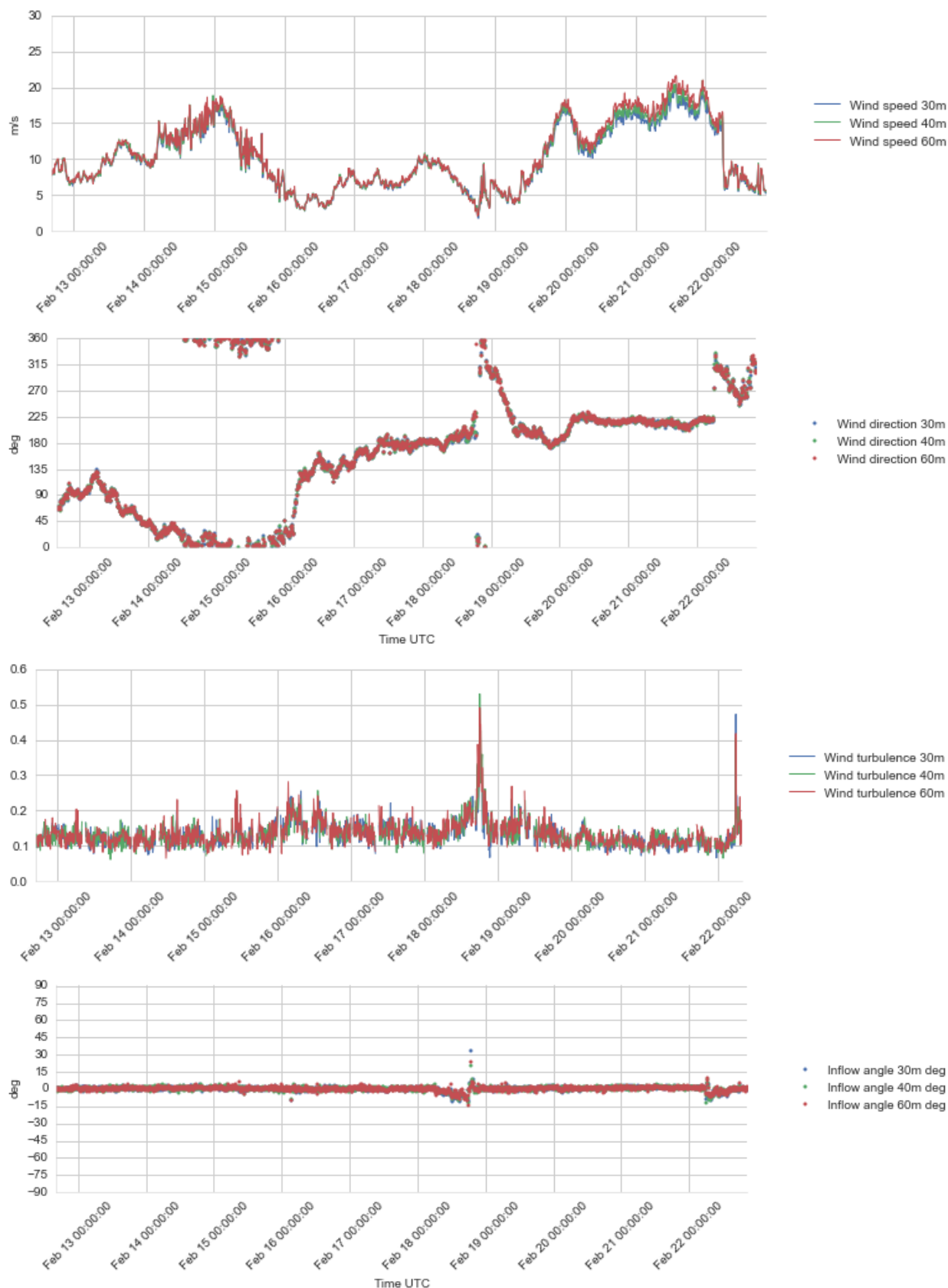


Figure 4.10 Plots of wind profile data, 30 – 60 m a.s.l., 12 - 22 Feb 2016.

From top to bottom: Wind speed, Wind direction, Turbulence Intensity, and Inflow Angle.

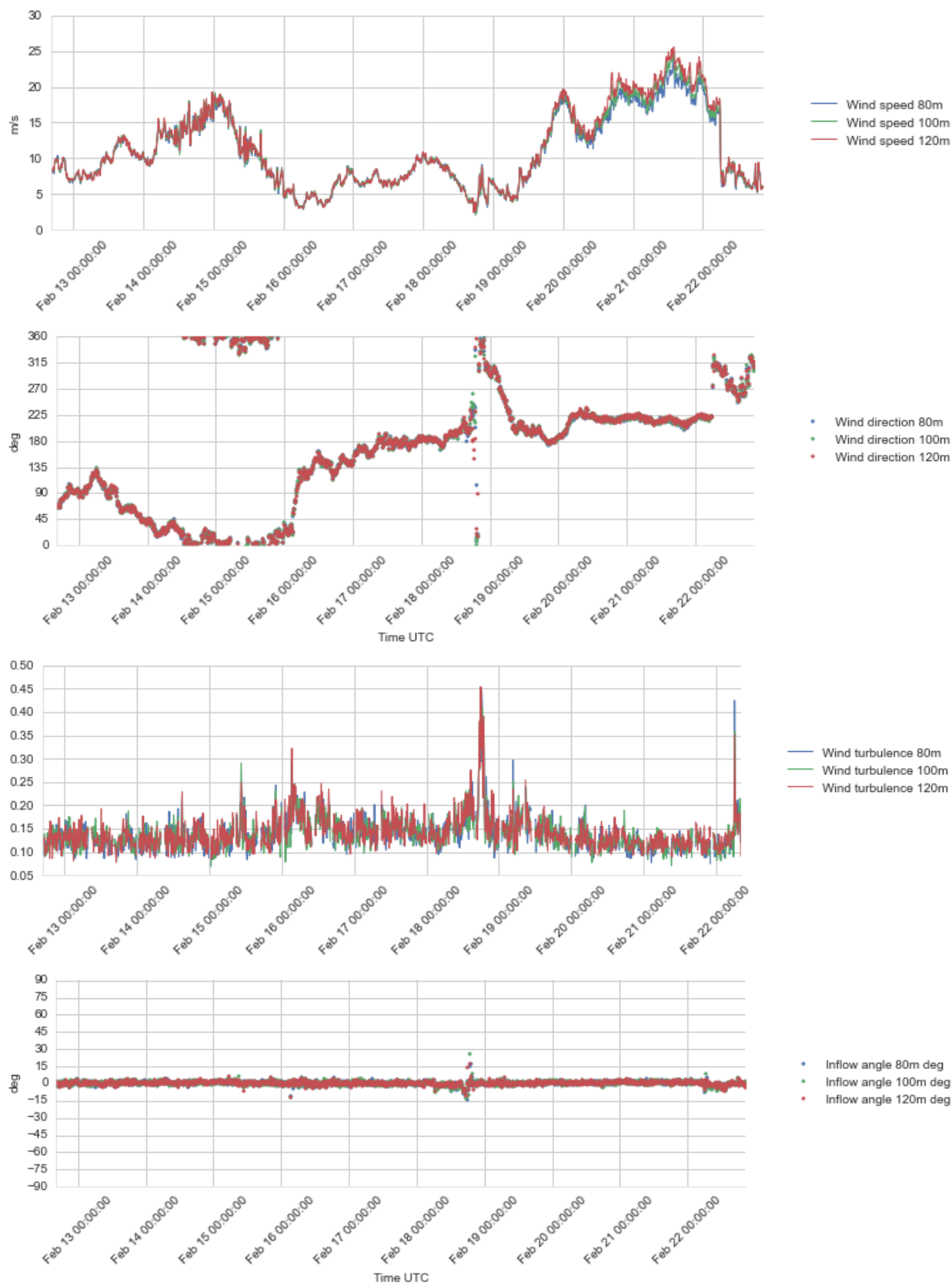


Figure 4.11 Plots of wind profile data, 80 – 120 m a.s.l., 12 - 22 Feb 2016.

From top to bottom: Wind speed, Wind direction, Turbulence Intensity, and Inflow Angle.

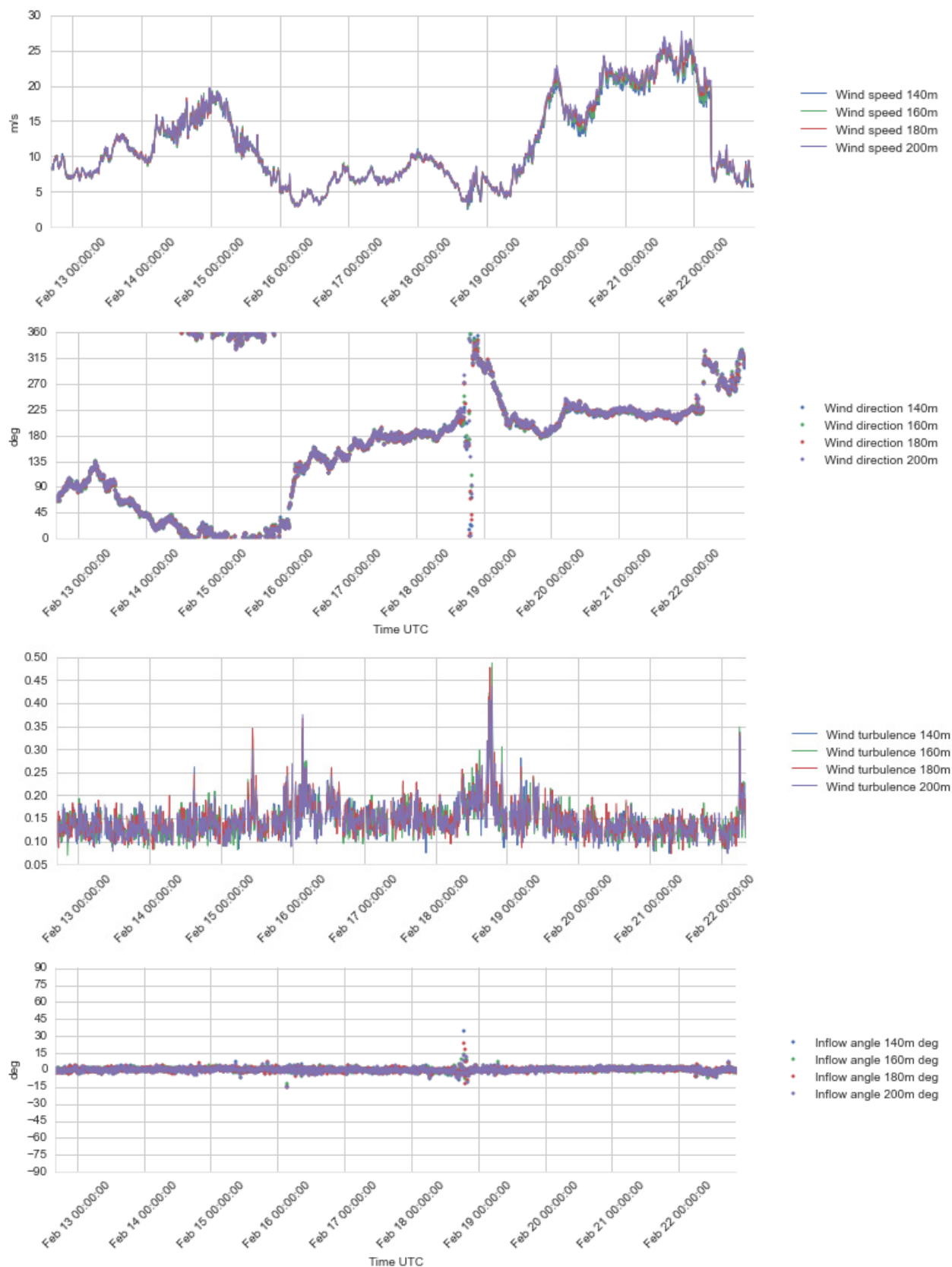


Figure 4.12 Plots of wind profile data, 140 – 200 m a.s.l., 12 - 22 Feb 2016.

From top to bottom: Wind speed, Wind direction, Turbulence Intensity, and Inflow Angle.

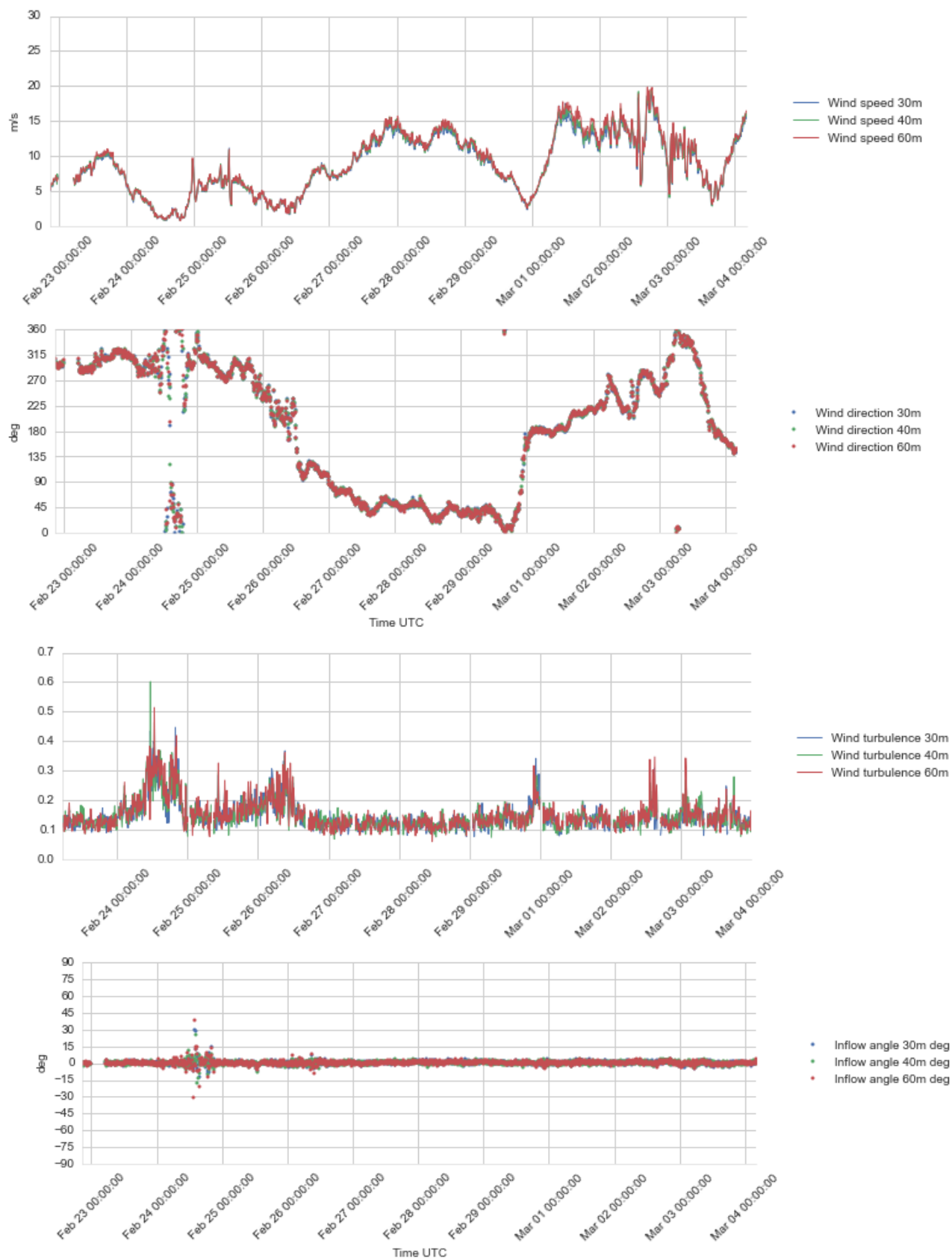


Figure 4.13 Plots of wind profile data, 30 – 60 m a.s.l., 22 Feb – 4 Mar 2016.

From top to bottom: Wind speed, Wind direction, Turbulence Intensity, and Inflow Angle.

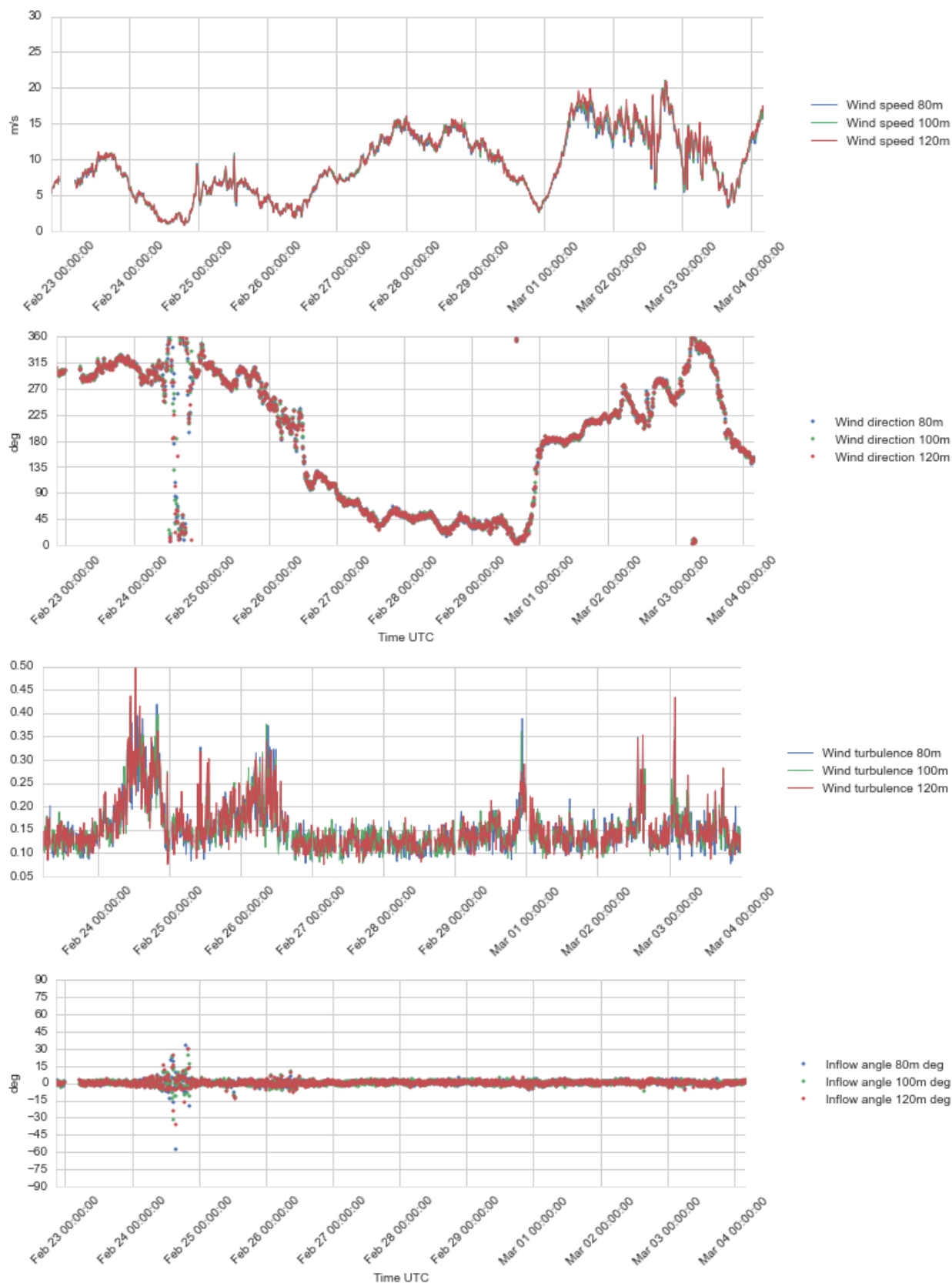


Figure 4.14 Plots of wind profile data, 80 – 120 m a.s.l., 22 Feb – 4 Mar 2016.

From top to bottom: Wind speed, Wind direction, Turbulence Intensity, and Inflow Angle.

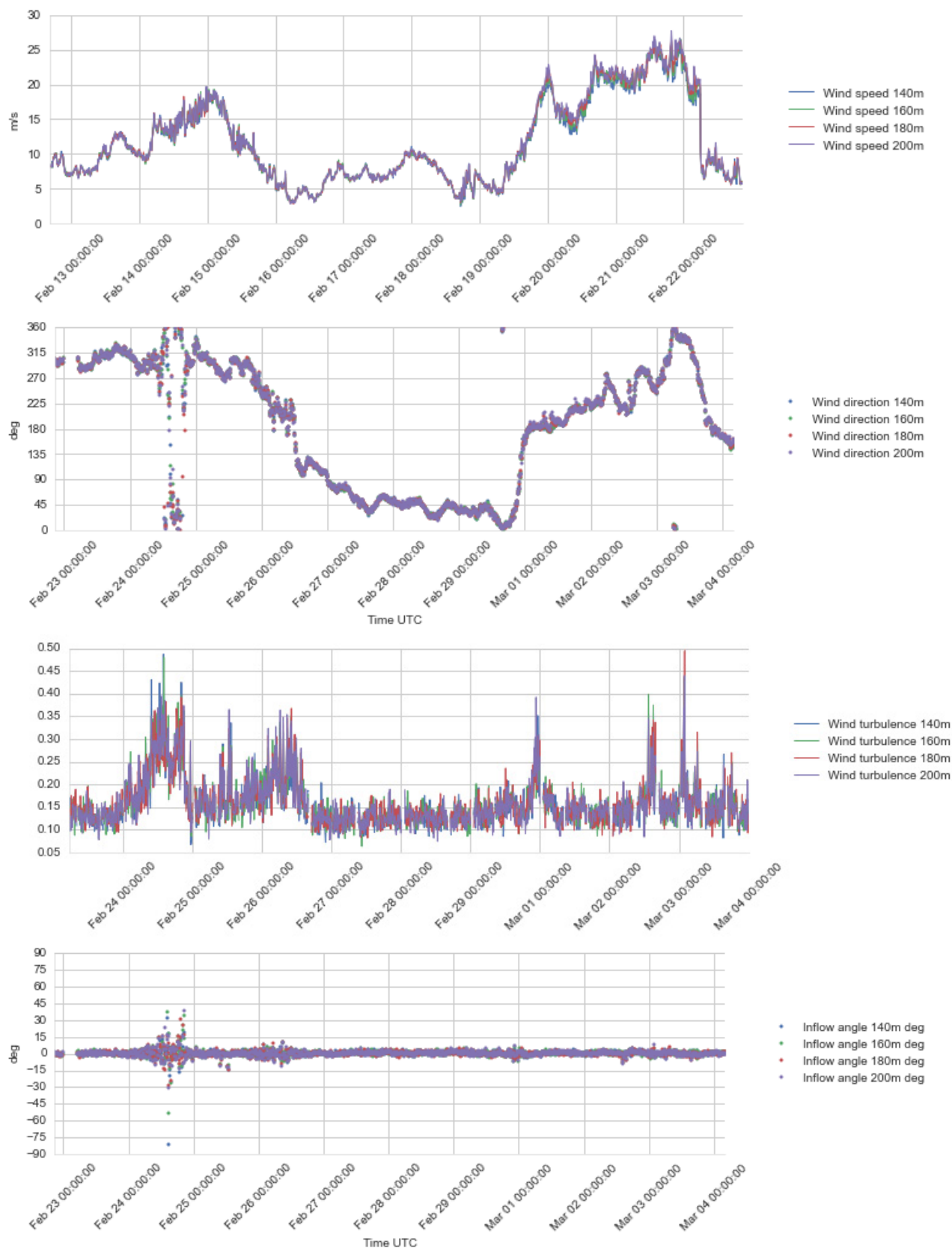


Figure 4.15 Plots of wind profile data, 140 – 200 m a.s.l., 22 Feb – 4 Mar 2016.

From top to bottom: Wind speed, Wind direction, Turbulence Intensity, and Inflow Angle.

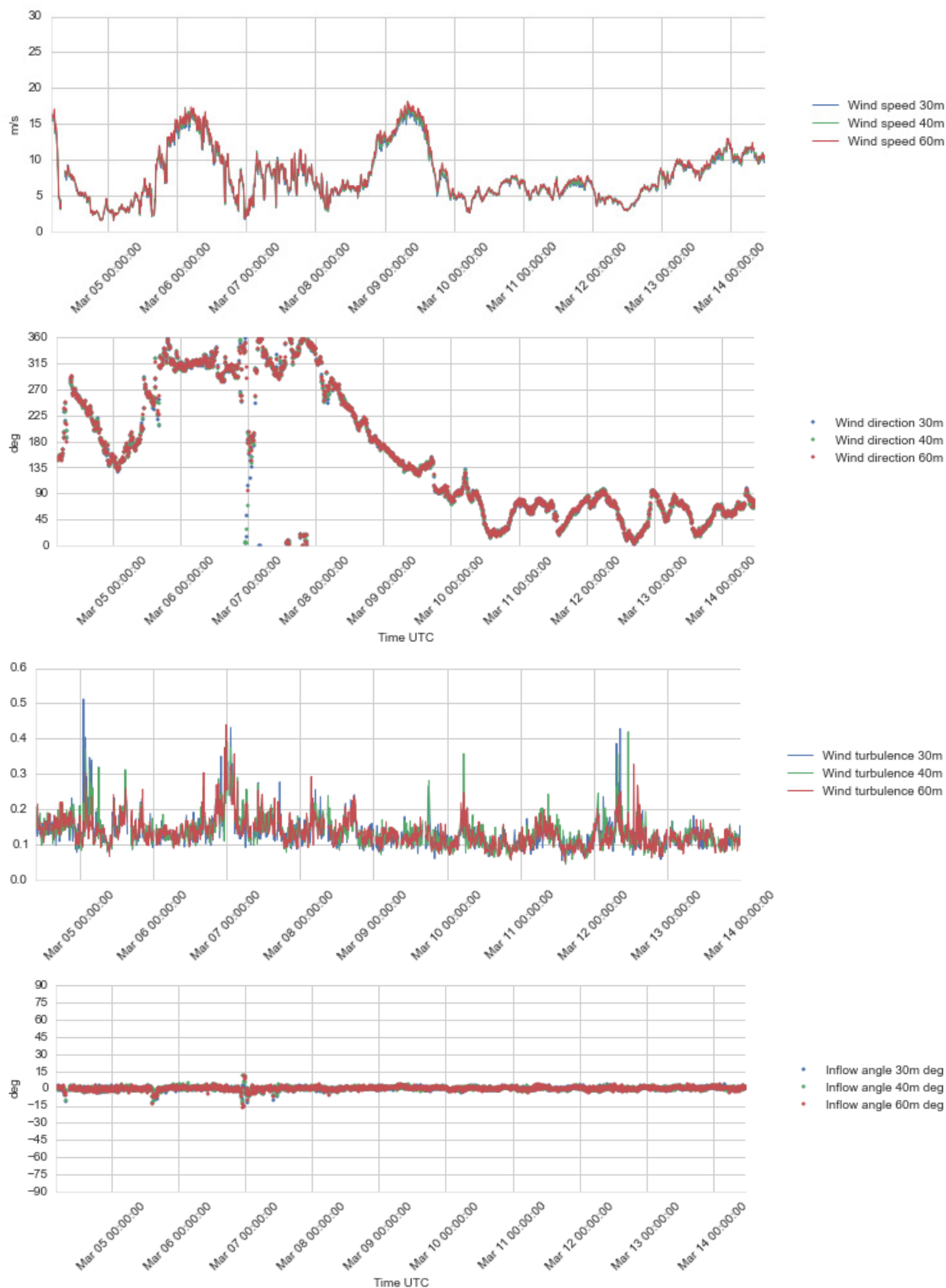


Figure 4.16 Plots of wind profile data, 30 – 60 m a.s.l., 4 – 14 Mar 2016.

From top to bottom: Wind speed, Wind direction, Turbulence Intensity, and Inflow Angle.

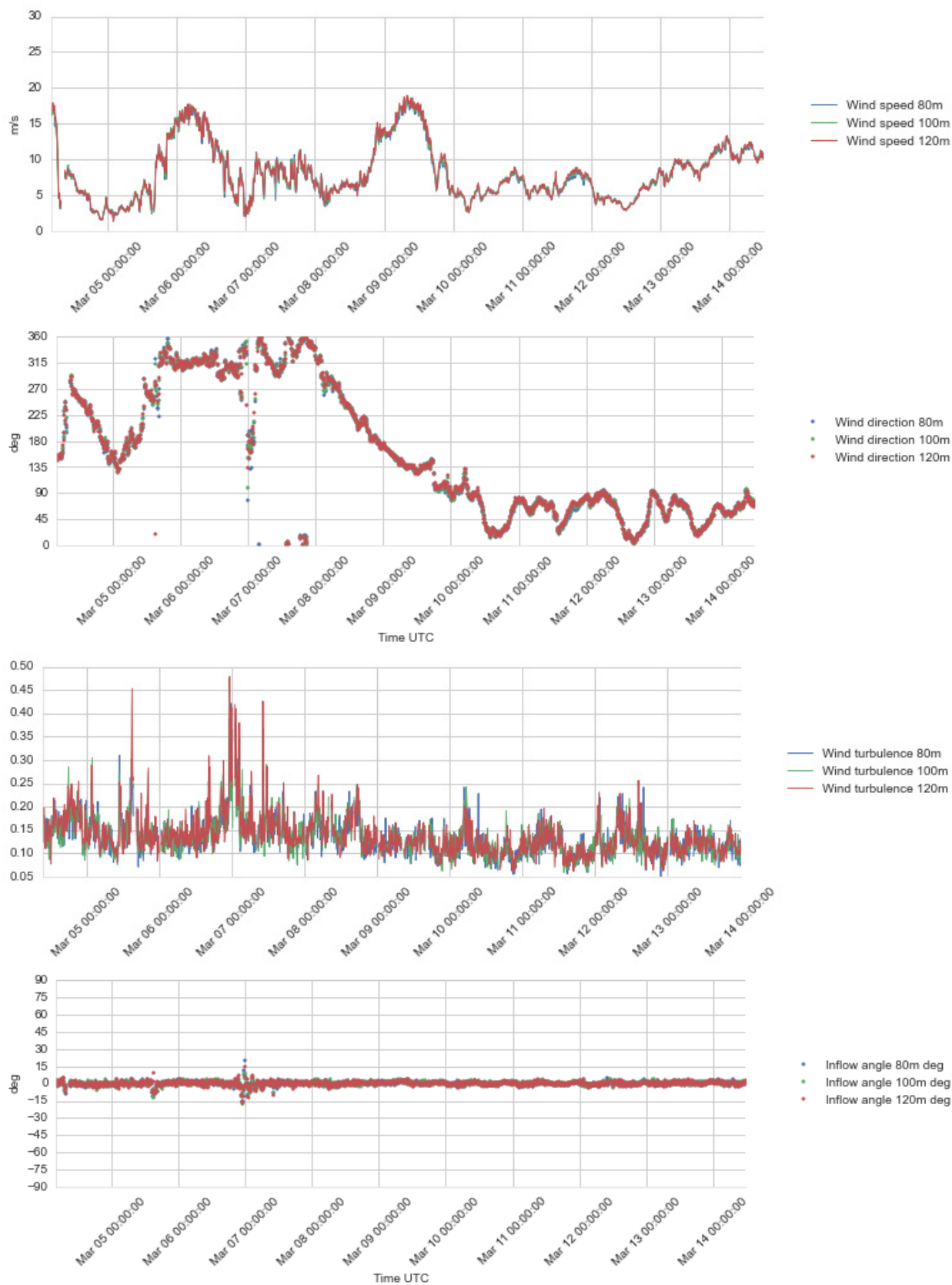


Figure 4.17 Plots of wind profile data, 80 – 120 m a.s.l., 4 – 14 Mar 2016.

From top to bottom: Wind speed, Wind direction, Turbulence Intensity, and Inflow Angle.

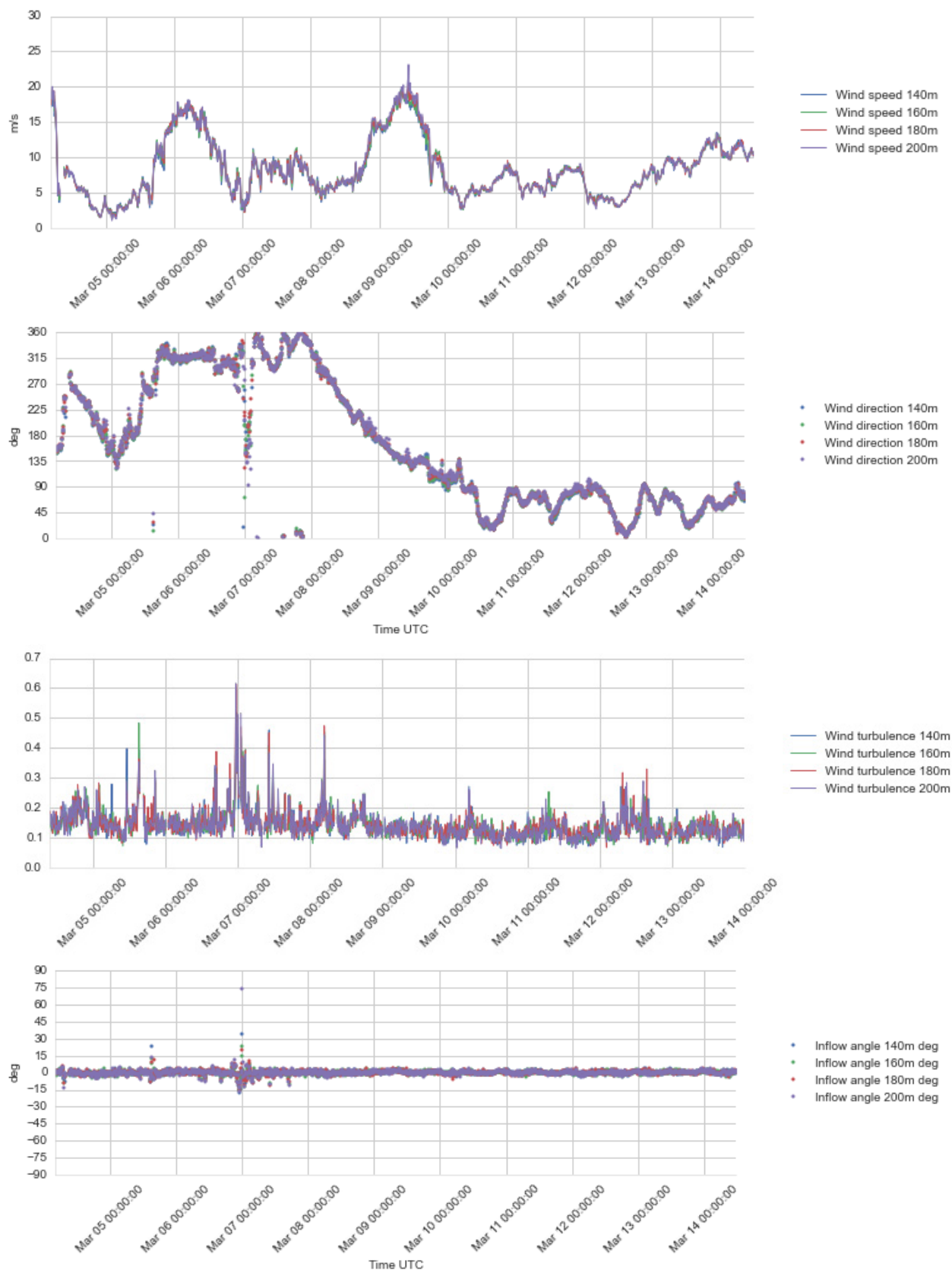


Figure 4.18 Plots of wind profile data, 140 – 200 m a.s.l., 4 – 14 Mar 2016.

From top to bottom: Wind speed, Wind direction, Turbulence Intensity, and Inflow Angle.

4.2.4 Current velocity profile data

The following plots show the current velocity profile time series. In these plots current direction 0° or 360° means that the current flows toward north, 90° indicates flow toward east etc. In general the current profiler has worked well, just a few data points were lost due to buoy restarting, but otherwise the series is continuous.

As expected for this location the current velocity data show a very strong and consistent semi-diurnal tidal current pattern, completing two full rotations of the current vector per day, and four tidal current maxima; two toward south-southwest and two toward north-east. The quarter-diurnal peaks in the current speed vary between 60 – 100 cm/s over the month, depending on the phases of the moon.

The maximum surface current velocity during this period was 107 cm/s toward south-south-west, which was recorded at 4-6 m depth on 10 and 11 March.

The water depth is about 28 m at this location and current velocities down to 26 m depth are presented. At the lowest level, 26 m, the current speeds are reduced parts of the time when the profiling beam hits the bottom. This usually occurs at every other peak in the current speed; that is when the strong current coincides with relatively low water level.

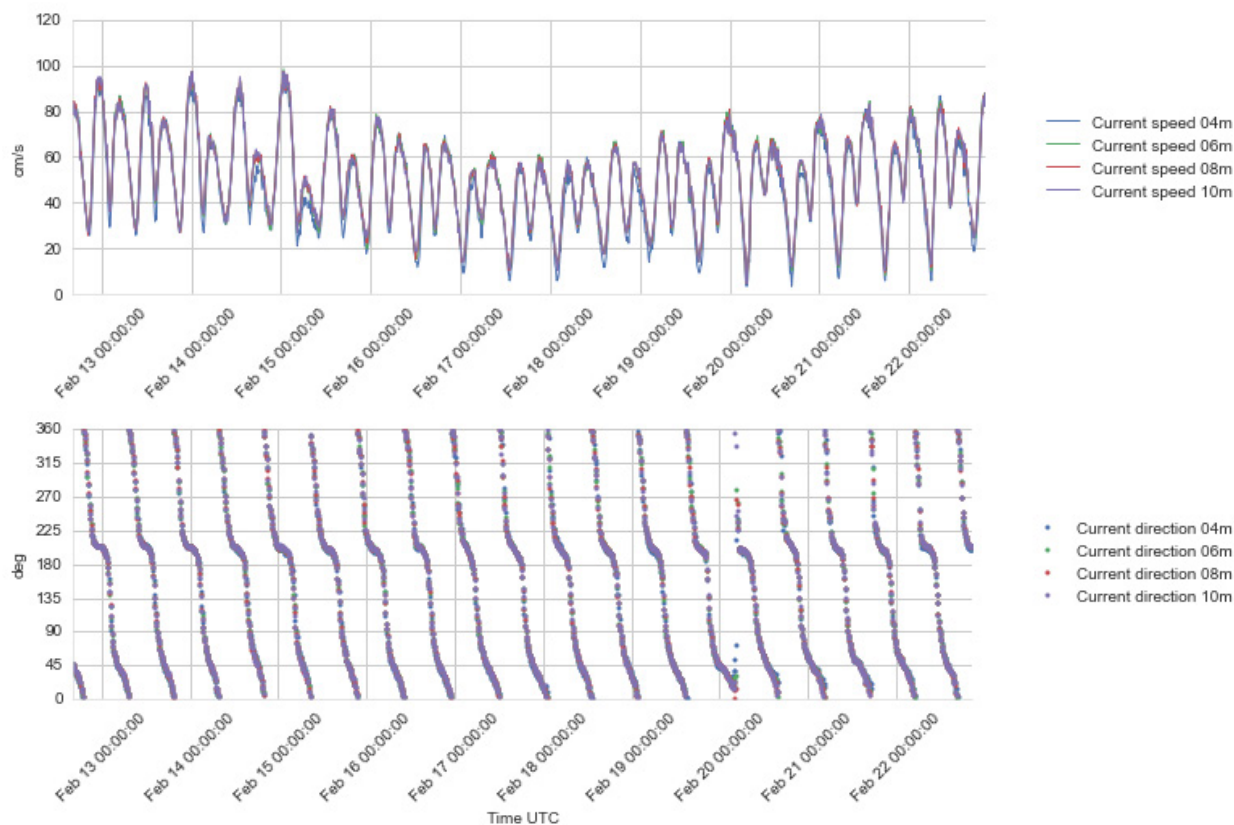


Figure 4.19 Time series plots of current speed (upper) and direction (lower panel), 4 - 10 m depth, 12 - 23 Feb 2016

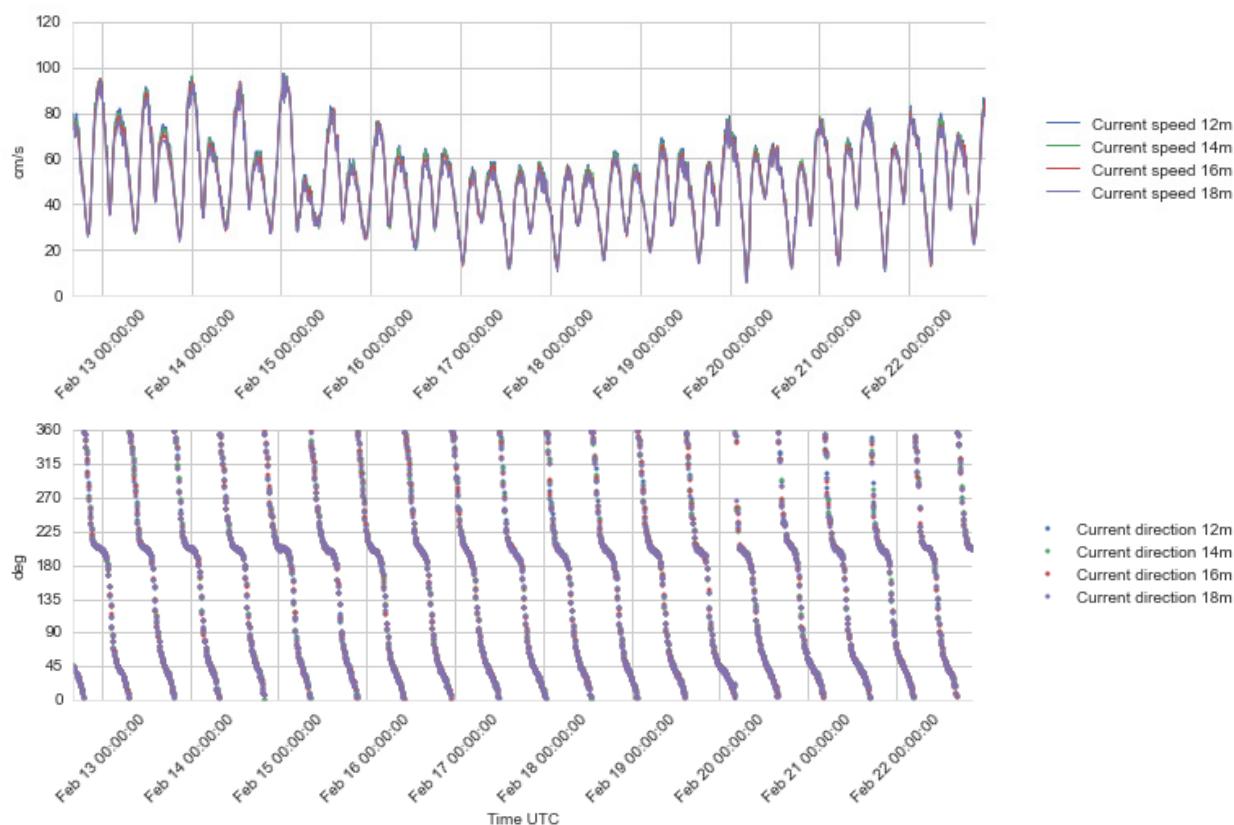


Figure 4.20 Time series plots of current speed (upper) and direction (lower panel), 12 - 18 m depth, 12 - 22 Feb 2016.

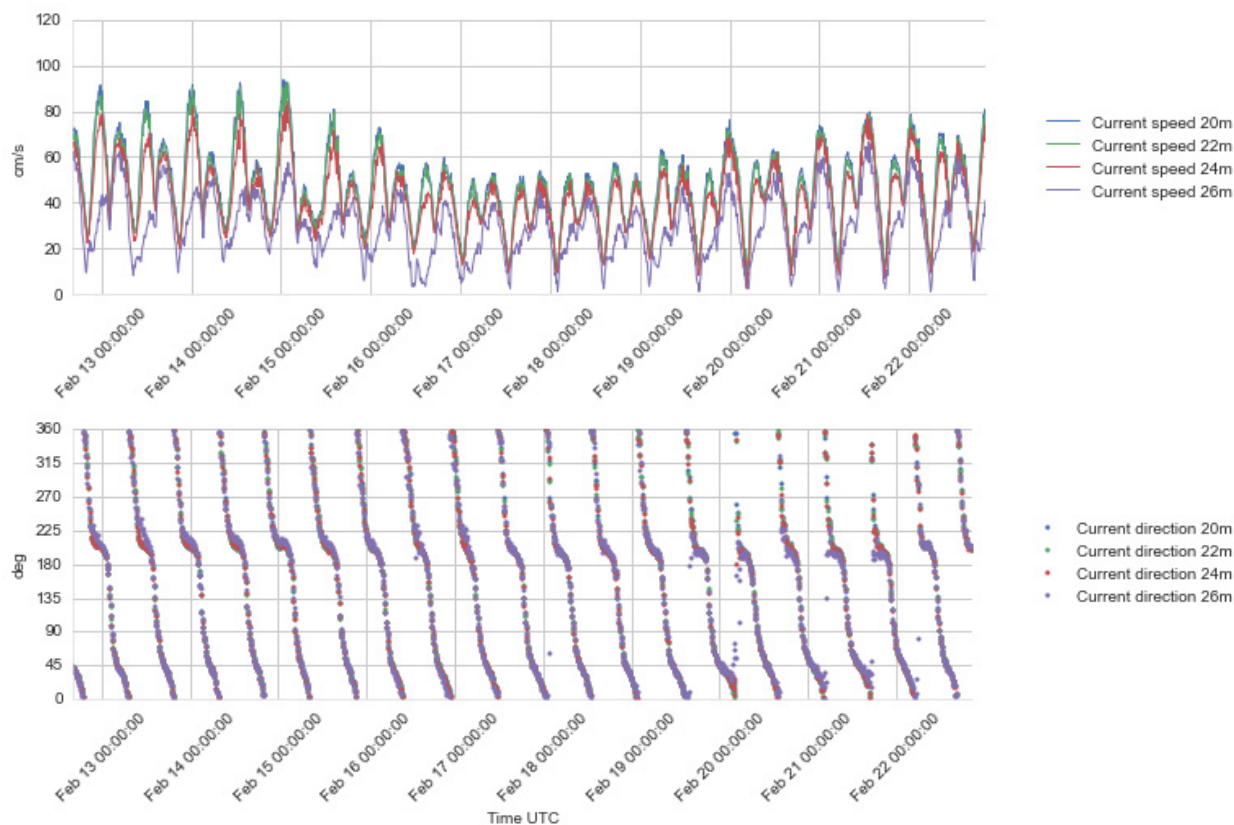


Figure 4.21 Time series plots of current speed (upper) and direction (lower panel), 20 - 26 m depth, 12 - 22 Feb 2016.

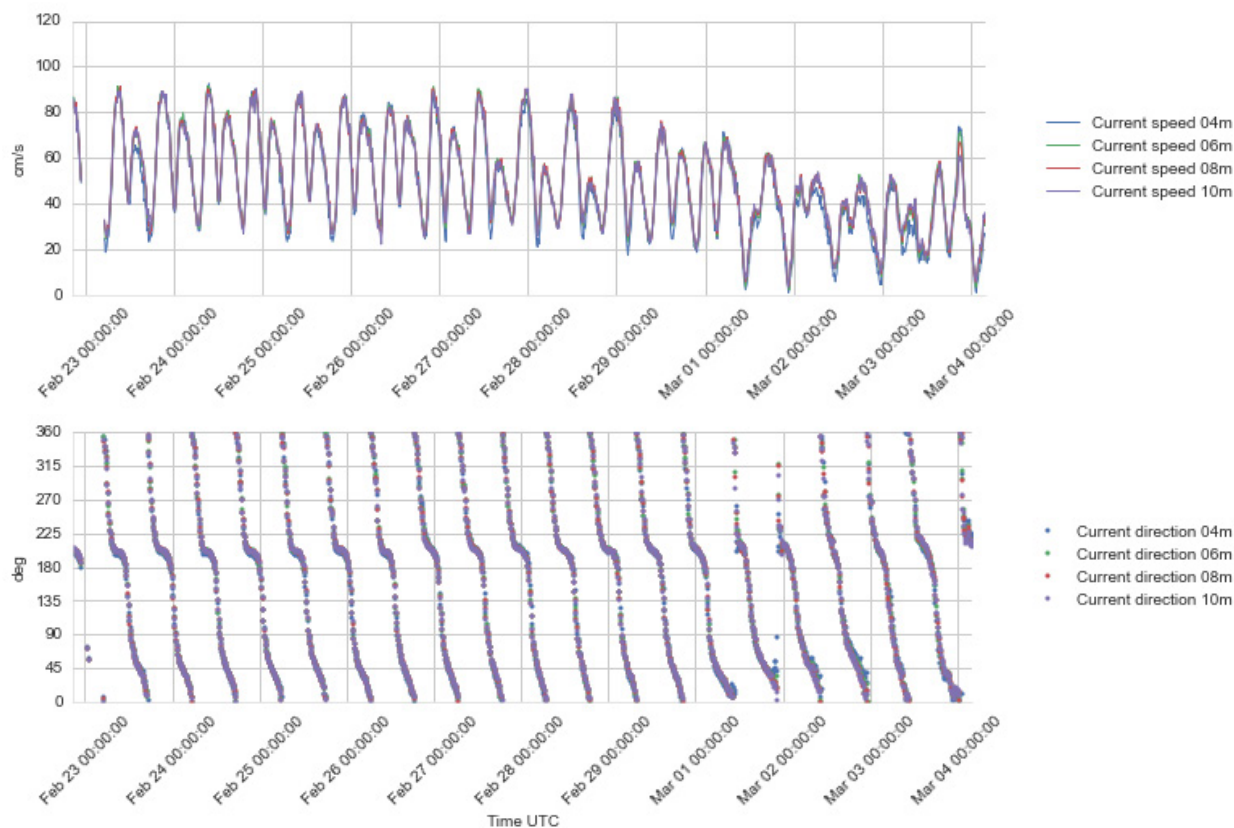


Figure 4.22 Time series plots of current speed (upper) and direction (lower panel), 4 - 10 m depth, 22 Feb – 4 Mar 2016.

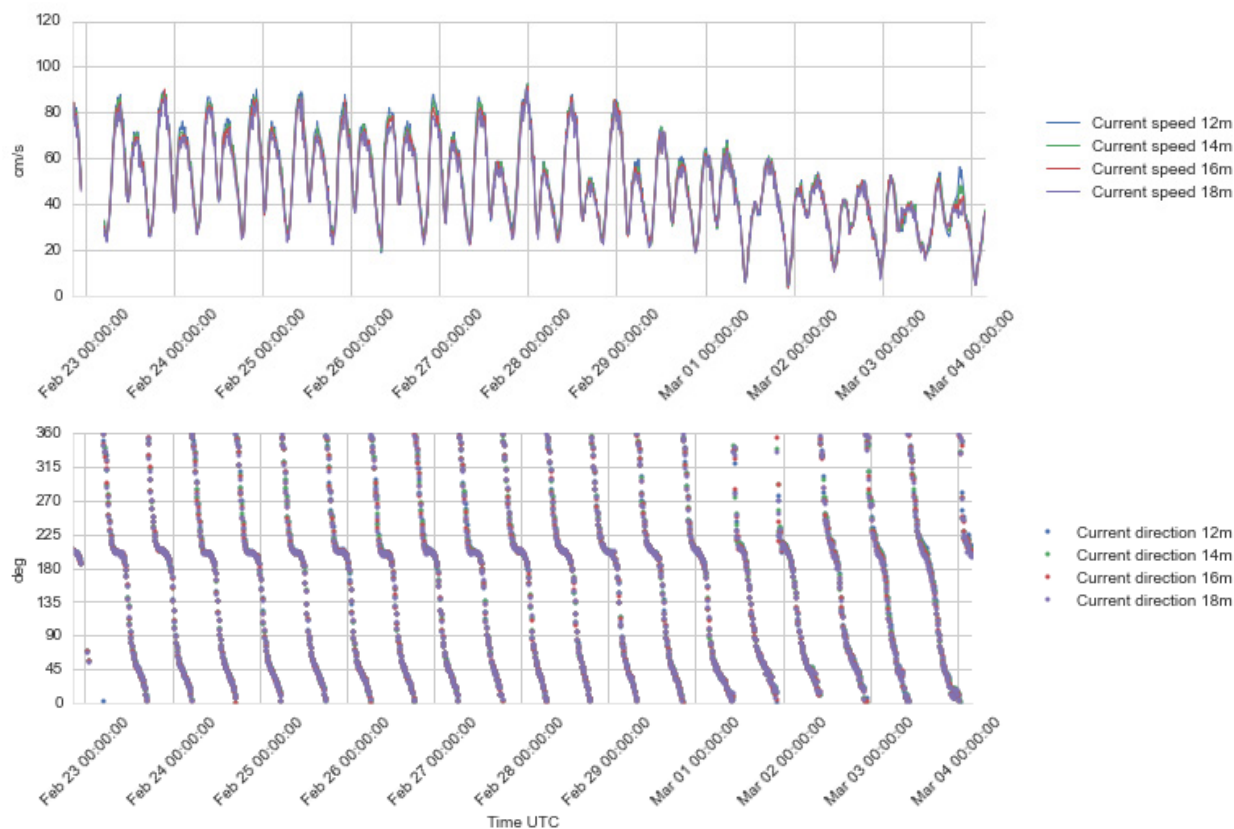


Figure 4.23 Time series plots of current speed (upper) and direction (lower panel), 12 -18 m depth, 22 Feb – 4 Mar 2016.

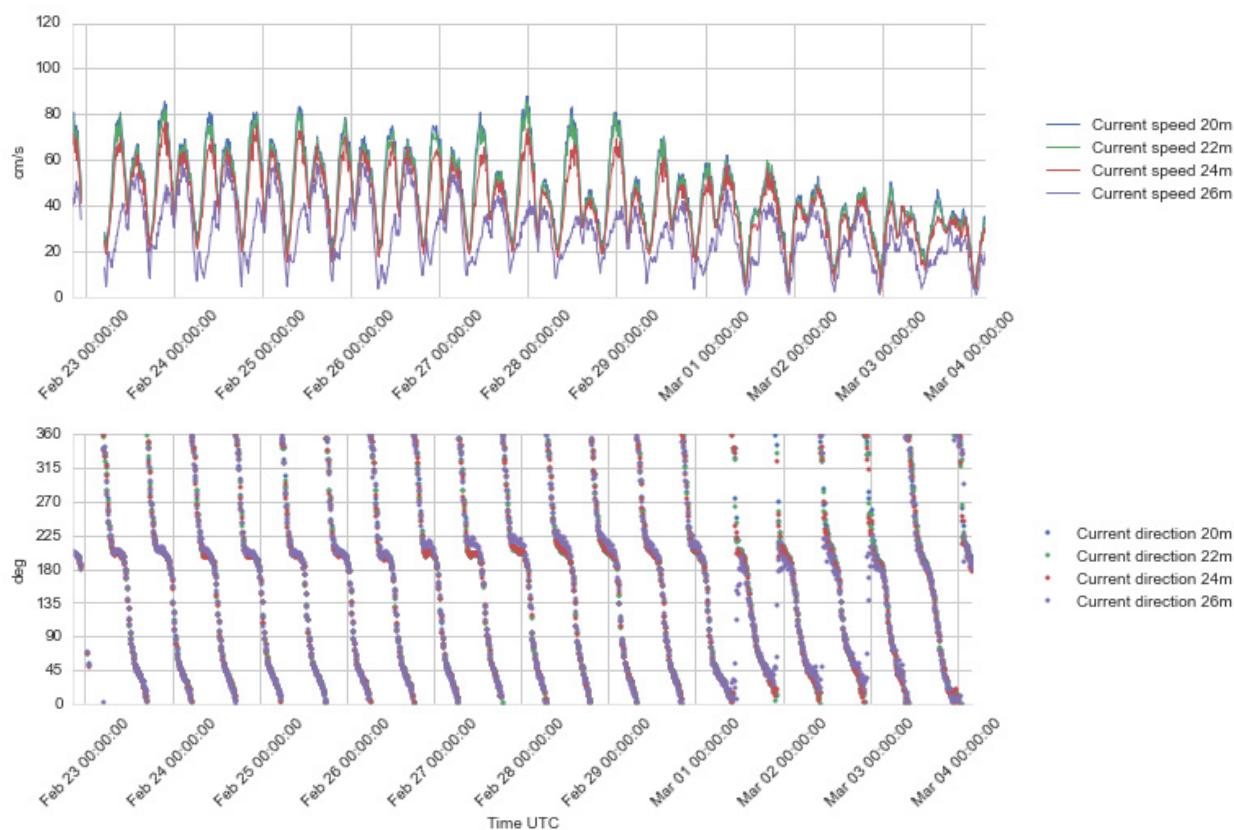


Figure 4.24 Time series plots of current speed (upper) and direction (lower panel), 20 – 26 m depth, 22 Feb – 4 Mar 2016.

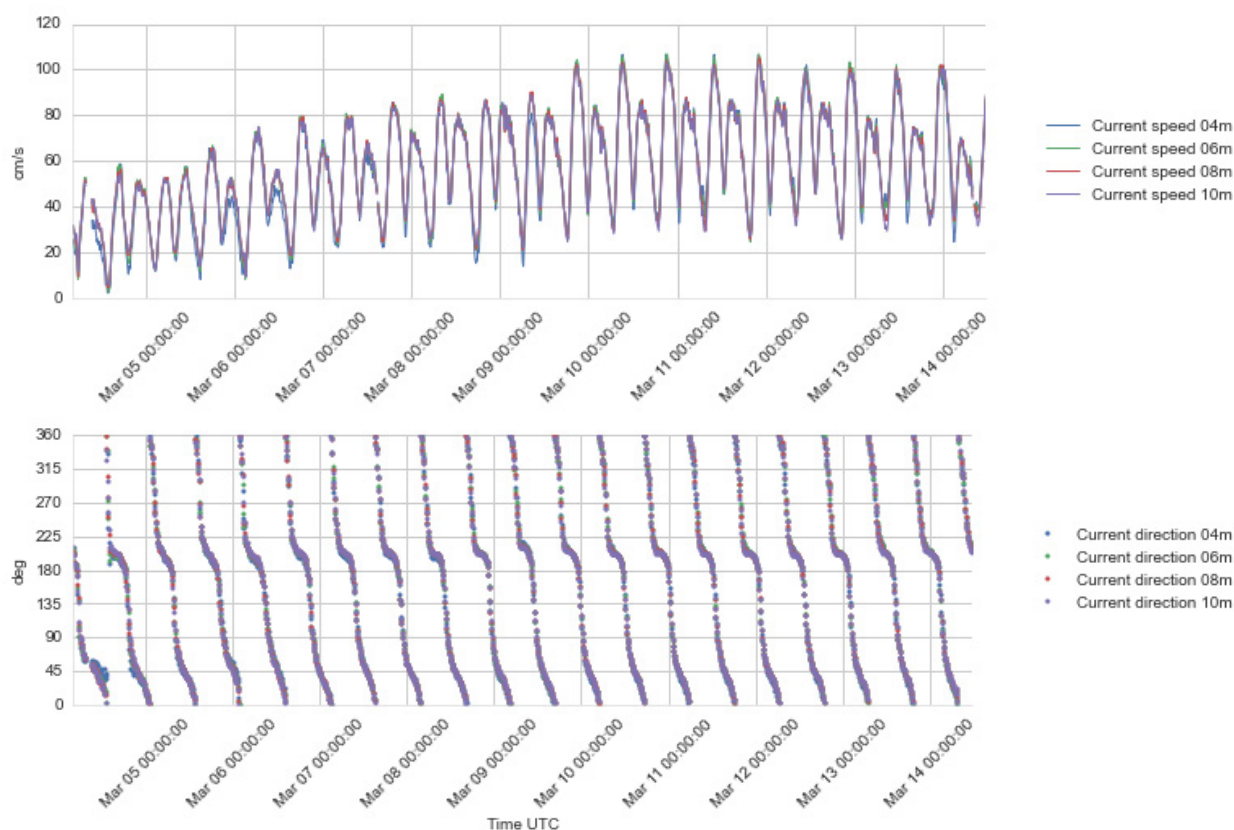


Figure 4.25 Time series plots of current speed (upper) and direction (lower panel), 4 - 10 m depth, 4 – 14 Mar 2016.

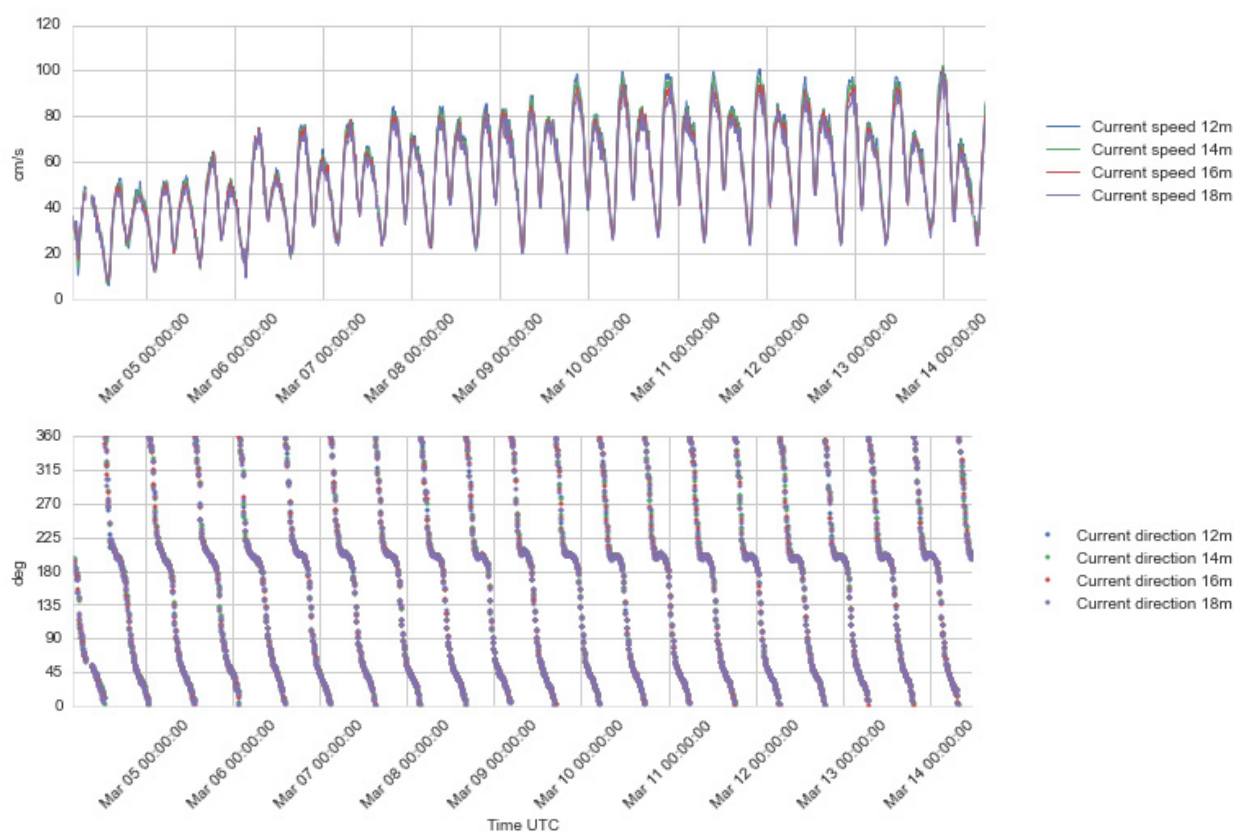


Figure 4.26 Time series plots of current speed (upper) and direction (lower panel), 12 - 18 m depth, 4 – 14 Mar 2016.

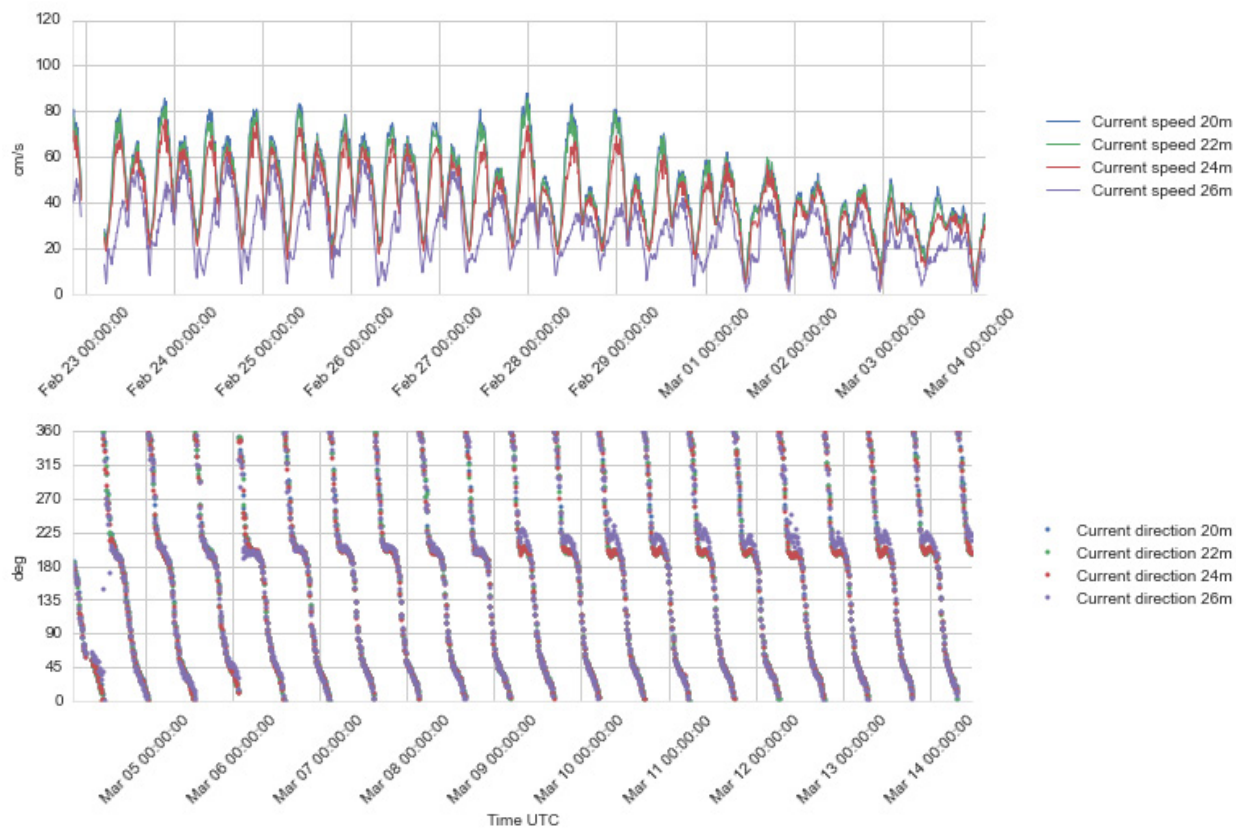


Figure 4.27 Time series plots of current speed (upper) and direction (lower panel), 20 - 26 m depth, 4 – 14 Mar 2016.



Appendix A

Buoy deployment record

DEPLOYMENT/RECOVERY SHEET				
Project Name:	WS lidar buoy to Borssele-nederland			
Project no:	C75339	Latitude:	51°38.7780'N (y=5,721,704)	
Station name:	Borssele – Lot 2	Longitude:	2°57.0846'E (x=496,638)	
WS buoy no:	WS156	Approx. depth:	30m	
PFF numbers:	33920 – 33926	Buoy marking:		
Buoy module/sensor		Serial number/ID		
Wavesense 3 data logger		279		
XSense		0770017B		
PMU		346		
Vaisala PTB330		K2740014		
Compass		1039696		
Iridium modem		IMEI: 300125060202800 SIM: 8988169514001092381 MSISDN: 881623489332 MSISDN-C: 881692788814		
UHF service radio Adeunis ARF7940BA		B142500101 Addr:11562		
UHF service radio Adeunis ARF7940BA		B142500109 Addr: 11570		
L3 AIS		MMSI: 992572061		
Gill wind sensor		14360066		
Vaisala air HMP155 temperature/humidity		L3050100		
Buoytracker		ID: 730307 Name: Borssele 2 WS156		
LIDAR ZephIR300		501		
Flashlight		329387		
Nortek Current meter		AQP6691/AQD8621		
Fuel Cell 1		efoy : 302306-1536-36837 stack: 151010086--00092		
Fuel Cell 2		efoy : 302306-1536-36834 stack: 151010086--00088		
Fuel Cell 3		efoy : 302305-1444-34726 stack: 151010084--01192		
Fuel Cell 4		efoy : 302305-1443-34636 stack: 151010084--01171		
CONFIGURATION				
Data transmission interval:		Continuous mode. '		
Listening window		NA		
POWER OPTIONS				
Lead batteries type		4 x 62Ah		
Lithium batteries:		6 x 272Ah		
Fuel cells		4 fuel cells with 10 methanol cartridges 28 litres each.		
DEPLOYMENT HISTORY				
	YEAR	MONTH	DATE	GMT
First measurement	2016	February	12	14:10
First measurement in position	2016	February	12	16:20



Out of measuring position				
Last measurement				
Comments:				
Deployment vessel: Multirasalvor 3		Recovery vessel:		
Deployed by: Edvard M. Elgsæther		Recovered by:		

THE NETHERLANDS ENTERPRISE AGENCY (RVO)

Supply of Meteorological and Oceanographic data at Borssele Wind Farm Zone (BWFZ) - Lot 2
Validation report: 12 February - 14 March 2016



Reference No: C75339_Lot2_VAL01_R1
13 April 2016

Fugro OCEANOR AS
Pirsenteret, P.O. Box 1224, Sluppen, N-7462 Trondheim, Norway
Tel: +47 73545200 Fax: +47 73545201, e-mail: trondheim@oceanor.com



**Supply of Meteorological and Oceanographic data at Borssele Wind Farm Zone (BWFZ) - Lot 2:
C75339_Lot2_VAL01_R1**

Rev	Date	Originator	Checked & Approved	Issue Purpose
0	05.04.2016	Lasse Lønseth	Arve Berg	Preliminary report for client review.
1	13.04.2016	Lasse Lønseth	Arve Berg	Final report.

Rev 1 – 13 April 2016	Originator	Checked & Approved
Signed:		

This report is not to be used for contractual or engineering purposes unless the above is signed where indicated by both the originator of the report and the checker/approver and the report is designated 'FINAL'.

**Supply of Meteorological and Oceanographic data at Borssele Wind Farm Zone (BWFZ) - Lot 2:
C75339_Lot2_VAL01_R1**

Rev	Date	Originator	Checked & Approved	Issue Purpose
0	05.04.2016	Lasse Lønseth	Arve Berg	Preliminary report for client review.
1	13.04.2016	Lasse Lønseth	Arve Berg	Final report.

Rev 1 – 13 April 2016	Originator	Checked & Approved
Signed:		

This report is not to be used for contractual or engineering purposes unless the above is signed where indicated by both the originator of the report and the checker/approver and the report is designated 'FINAL'.

TABLE OF CONTENT

SUMMARY	1
1. INTRODUCTION.....	2
2. Instrumentation and measurement configuration	2
3. Results	6
3.1 Data recovery.....	6
3.2 Reference stations	6
3.2.1 Positions and distances.....	6
3.2.2 Schouwenbank	7
3.2.3 Vlake van de Raan	8
3.2.4 Brouwershavensegat (BG2)	9
3.3 Evaluation of the collected data	10
3.3.1 Wave data	10
3.3.2 Wind data	12
3.4 Conclusions	15

Appendix A: Buoy deployment record

SUMMARY

Two Seawatch Wind Lidar buoys are deployed at the Borssele Wind Farm Zone (BWFZ) at positions labelled "Lot 1" and "Lot 2". This report concerns Lot 2.

The buoy WS156 was deployed at Lot 2 on 12 February 2016 at 15:25 UTC. The buoy has delivered data continuously since the deployment. This report presents an evaluation of the wind and wave data collected during the period 12 February – 14 March 2016, comparing the buoy data to data from two fixed measurement stations in the region. The reference stations normally used are the Waverider buoy at Schouwenbank (station SCHB) and the wind sensor platform at Vlakte van de Raan (VR). However, during this period data from the VR station were not available due to technical problems, and instead data from the station Brouwershavensegat 02 (BG2) are used.

Although the reference stations are some 20 – 40 km away from the buoy location we see good agreement between the buoy and references.

1. INTRODUCTION

The Seawatch Wind Lidar buoy with serial no. WS156 is deployed at the Borssele Wind Farm Zone (BWFZ) Lot 2 in the Dutch sector of the North Sea. The buoy was deployed on 12 February 2016 at 15:25 with the bottom mooring weight at position 51° 38.778' N, 2° 57.0846' E.

The wind and wave data collected during the period 12 February – 14 March 2016 are presented in the data presentation report ref. C75339_Lot2_MPR01_R0. This report presents an evaluation of the wind and wave data by comparing the buoy data to data from fixed measurement stations in the area. Intercomparisons between the data from the two Lidar buoys will be handled separately outside of this report. The reference stations normally used are the Waverider buoy at Schouwenbank (SCHB) and the wind sensor platform at Vlakte van de Raan (VR). However, during this period data from the VR station were not available due to technical problems, and instead data from the station Brouwershavensegat 02 (BG2) are used. The wave data are compared to measurements from SCHB, and the wind data are compared to data from BG2. The comparisons are shown in time series and scatter plots.

The time reference used in this report is UTC.

2. Instrumentation and measurement configuration

The buoy is a Seawatch Wind Lidar Buoy based on the original Seawatch Wavescan buoy design with the following sensors:

- Wavesense: 3-directional wave sensor
- Xsens 3-axes motion sensor
- Gill Windsonic M acoustic wind sensor
- Vaisala PTB330A air pressure sensor
- Vaisala HMP155 air temperature and humidity sensor
- Nortek Aquadopp 600kHz current profiler.
- ZephIR 300S Lidar.

The buoy with mooring as deployed is presented in Figure 2.1.

The measurement setup is detailed in Table 2.1. Detail information such as sensor types and serial numbers can be found in the deployment record in Appendix A.

Table 2.1 Configuration of measurements by the Seawatch Wind Lidar buoy at Borssele Borssele Wind Farm Zone (BWFZ)

– Lot 2.

Instrument type	Sensor height (m)	Parameter measured	Sample height ²⁾ (m)	Sampling interval (s)	Averaging period (s)	Burst interval (s)	Transmitted?
Wavesense 3	0	Heave, pitch, roll, heading	0	0.5	Time series duration: 1024 s	600	No
		Sea state parameters (1)	0	600	1024	600	Yes
Xsens		Heave, east, north acceleration, q0, q1, q2, q3 (attitude quaternion)	0	0.5	N/A	3600	No
Gill Windsonic M	4.1	Wind speed, wind direction	4.1	1	600	600	Yes
Vaisala PTB330A	0.5	Air pressure	0.5	30	60	600	Yes
Vaisala HMP155	4.1	Air temperature Air humidity	4.1	5	60	600	Yes
Nortek Aquadopp	-1	Current speed and direction profile, water temperature (at 1 m depth)	-4 -6 ... -30 (14 levels)	N/A	600	600	Yes
ZephIR 300S Lidar	2	Wind speed and direction at 10 heights (The 11 th level, the so called reference level which is not configurable, is also located at 40 m and referred to as 40.0 Ref.)	30.0 40.0 40.0 ref 60.0 80.0 100.0 120.0 140.0 160.0 180.0 200.0	≈ 17.4 s ¹⁾	600	600	Yes

¹⁾ This is the approximate time between the beginning of one sweep of the profile and the next one, the interval may vary slightly. The ZephIR sweeps one level at a time beginning at the lowest one, and after the top level has been swept it uses some time for calculations and re-focusing back to the lowest level for a new sweep.

²⁾ Height relative to actual sea surface.

Table 2.2 Definitions of wave parameters presented in this report

H	Individual wave height
Hmax	= Max(H): Height of the highest individual wave in the sample, measured from crest to trough
m0, m1, m2, m4, m-1, m-2	Moments of the spectrum about the origin: $\int f^k S(f) df$ where $S(f)$ is the spectral density and the wave frequency, f , is in the range 0.04 - 0.50 Hz
Hm0	Estimate of significant wave height, H_s , $Hm0 = 4\sqrt{m0}$
Tp	Period of spectral peak = $1/f_p$, The frequency/period with the highest energy
Tm01	Estimate of the average wave period; $Tm01 = m0/m1$
Tm02	Another estimate of the average wave period; $Tm02 = \sqrt{\frac{m0}{m2}}$
ThTp	Mean wave direction at the spectral peak ("The direction of most energetic waves")
Mdir	Wave direction averaged over the whole spectrum
	Directions are given in degrees clockwise from north, giving the direction the waves come from. (0° from north, 90° from east, etc.)

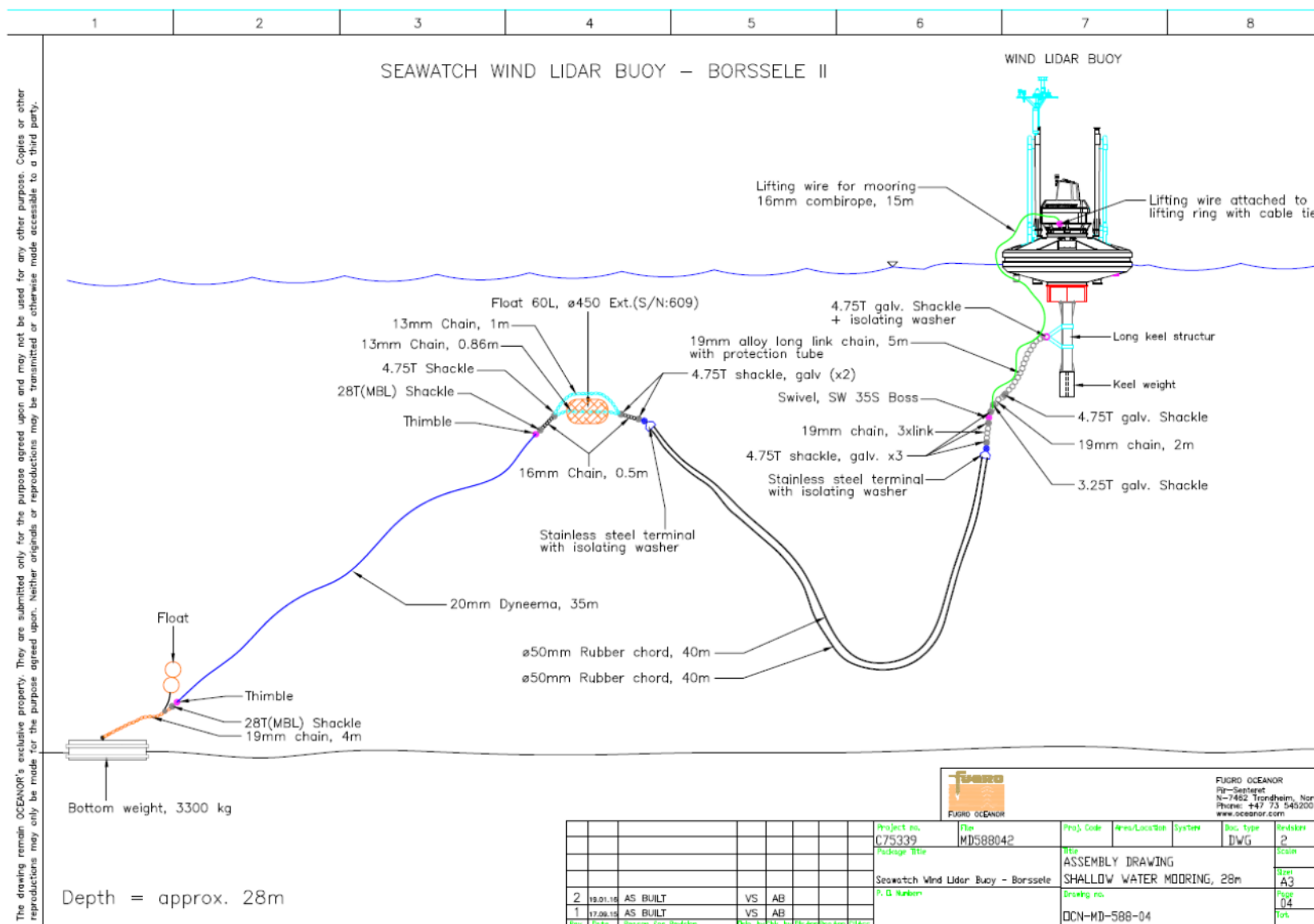


Figure 2.1 Mooring design for the Wind Lidar Buoy as deployed at Borssele Wind Farm Zone (BWFZ) – Lot 2.

3. Results

3.1 Data recovery

The data recovery is high for all parameters. The buoy transmitted data continuously from all sensors from 12 February 2016 at 16:20 until 14 March 2016 at 11:40. There are a few short gaps in the Lidar data where the received data are replaced by the “missing data” flag at all heights. The gaps are mainly single profile dropouts in the Lidar data only. The longest gap lasted from 23:50 on 22 February to 05:00 on 23 February. Due to the gaps it took 30.812 days to collect 30.5 days of good wind profile data.

The number of days of good data compared to the total length of the data collection period is presented in Table 3.1, which is copied from the data presentation report (ref. C75339_Lot2_MPR01_R1).

Table 3.1 Data return during the period 12 February 2016 at 16:20– 14 March 2016 at 11:40.

Measurement device	Length of data period (days)	Length of data set (days)	Average availability (%)
Lidar wind profile sensor	30.812	30.500	98.99
Wave sensor	30.812	30.597	99.14
Current velocity sensor	30.812	30.632	99.17
Atmospheric pressure sensor	30.812	30.639	99.28
Air temperature sensor	30.812	30.639	99.28

3.2 Reference stations

3.2.1 Positions and distances

Two public reference stations are used in the validation of the data. The reference for the wave measurements is a Waverider buoy at Schouwenbank (SCHB). Intercomparisons between the Lot 1 and Lot 2 buoys will be the subject of a separate analysis report.

As reference for wind data we have previously used data from a station at Vlakte van de Raan, but there are no data available from that station during this period due to technical problems, so data from the station Brouwershavensegat 02 (BG2) are used instead. The positions of the stations are given in Table 3.2, which gives an overview of the locations and distances.

Table 3.2 Positions of the Lidar buoy and the reference stations used in the evaluation of the buoy data.

Station	Latitude	Longitude	Distance from the Lidar buoy	Shortest distance from land
Borssele Lidar buoy	51° 42.41' N	3° 2.08' E		32.5 km
Schouwenbank Waverider buoy (SCHB)	51° 44.8' N	3° 18.3' E	19.3 km	22.0 km
Vlakte van de Raan (VR)	51° 30.0' N	3° 15.0' E	27.6 km	12.2 km
Brouwershavensegat 02 (BG2)	51° 46.0' N	3° 37.3' E	40.9 km	7.0 km

With another validated buoy also on location it would have been possible to validate this second buoy in the BWFZ against the first one. However, it is chosen to validate each buoy using independent data sources as the “ground truth”, and not make the validity of one buoy dependent on the other. This is analogous to the validation of each new buoy against an independent data source which is done before any buoy is delivered for use in an actual measurement campaign. However, a comparison between the conditions at the two buoy locations in the BWFZ is of interest in itself and will be treated separately from the data validation.

3.2.2 Schouwenbank

The wave measuring buoy at Schouwenbank (SCHB station) is a directional (“2D”) Datawell Waverider buoy. This buoy measures the wave height and directional spectrum using 3-axis accelerometers.



The SCHB station should be expected to have lower heights of wind sea (locally wind generated waves) than the Borssele Lidar buoy location in southerly to north-easterly winds due to the more limited fetch distance in those directions. In situations with wind sea from north-east to north-west, and situations dominated by northerly swells the two buoy should be exposed to approximately the same wave heights.



Figure 3.1 Google Earth image with indication of the Lidar buoy position and reference stations. (The Borssele Lot 2 Lidar buoy which is validated in this report is marked by the orange coloured pin.)

3.2.3 Vlake van de Raan

The Vlake van de Raan (VR) station is measuring wind speed and wind direction. Figure 3.2 shows a photo of the wind mast. Wind speed is measured with the KNMI cup-anemometer. Cup diameter is 105 mm and the distance between the centre of the cups to the rotation axis is 100 mm. Wind direction is measured with the KNMI wind vane. Distance between axis and the outer side of the vane is 535 mm. The anemometer and wind vane are located 13.9 m above the mean sea level. The azimuth of the wind vane plugs at the tip of the booms are determined with a camera relative to distant objects at close to the horizon. The instruments are logged with the KNMI wind SIAM. Wind gusts are determined from a running 3 sec mean value.



Figure 3.2 The wind measuring station at Vlake van de Raan.

Calibration of the cup anemometers is done in the wind tunnel of KNMI. Wind vanes are balanced and the direction of the vane is tested. Sensors are replaced after 26 month. The cup anemometer contains a photo-chopper with 32 slits. The accuracy is 0.5 m/s. The threshold velocity is 0.5 m/s. The resolution is

0.1 m/s. The response length is 2.5 m. The wind vane contains a code disk. Accuracy is 3°. Resolution is 1°. [ref. Chapter 5 "Handbook for the Meteorological Observation. Koninklijk Nederlands Meteorologisch Instituut KNMI, De Bilt September 2000.]

The VR station is located only 12 km from the coast and much closer to land than the Lidar buoy, and that is expected to have some effect on the winds, both speed and direction, especially for wind with direction from shore; directions from south-southwest to east-northeast in particular. This means that there can be considerable differences in wind speed and direction at any given time, while the long term overall averages are expected to be approximately the same.

3.2.4 Brouwershavensegat 02



The meteorological station Brouwershavensegat 02 (BG2) is located about 40 km to the east of the Borssele Wind Farm Zone, and about 7 km from the nearest land. Figure 3.3 shows the mast and location of the wind sensors at BG2. The land is quite close to this station on the south-eastern side, and in south-easterly wind situations the exposure to wind would be rather different compared to the exposure at the buoy station. For south-westerlies and westerlies the wind arrives at both stations travelling across longer stretches of open North Sea waters, so similar conditions should be expected. However, given the large distance, differences may be expected in wind speed and direction due to the time lag associated with moving fronts passing over the area from west to east.

Figure 3.3 The meteorological mast station at Brouwershavensegat (BG2) showing the locations of the wind sensors on the top deck.

3.3 Evaluation of the collected data

3.3.1 Wave data

The wave data from the Lidar buoy are compared to data from the Waverider at Schouwenbank in time series and scatter plots. The distance of about 20 km between the two locations and the different distance from shore is expected to cause some differences in these shallow waters.

The time series plot in Figure 3.4 and scatter plot in Figure 3.5 compares the significant wave height (H_{m0}). The data comparison period is a bit shorter than the Lidar buoy data collection period because the SCHB Waverider was out of operation until 17 February 2016 at 09:00. All peaks in the time series occur at almost exactly the same time, showing good coherence. The average H_{m0} values are 1.24 m at the Lidar buoy compared to 1.16 m at Schouwenbank. The difference as well as the scatter with $R^2 = 0.922$ may be attributed to differences between the locations. The water depth is different at the two locations, with SCHB being the shallower, and this would explain why the wave height is systematically lower at SCHB compared to the Lot 2 buoy at higher sea states, while they are the same at low sea states. The different distance from shore would give lower waves at SCHB when there is wind from shore due to the more limited fetch. Sometimes a time delay can be seen in the arrival of waves such as in the period of 4-6 March when the wind is turning from south via west to north-northwest (see Figure 3.10), and the buoy at Lot 2 observes the decrease and increase of waves first. Keeping this in mind we see that the Lidar buoy data compares remarkably well to the reference.

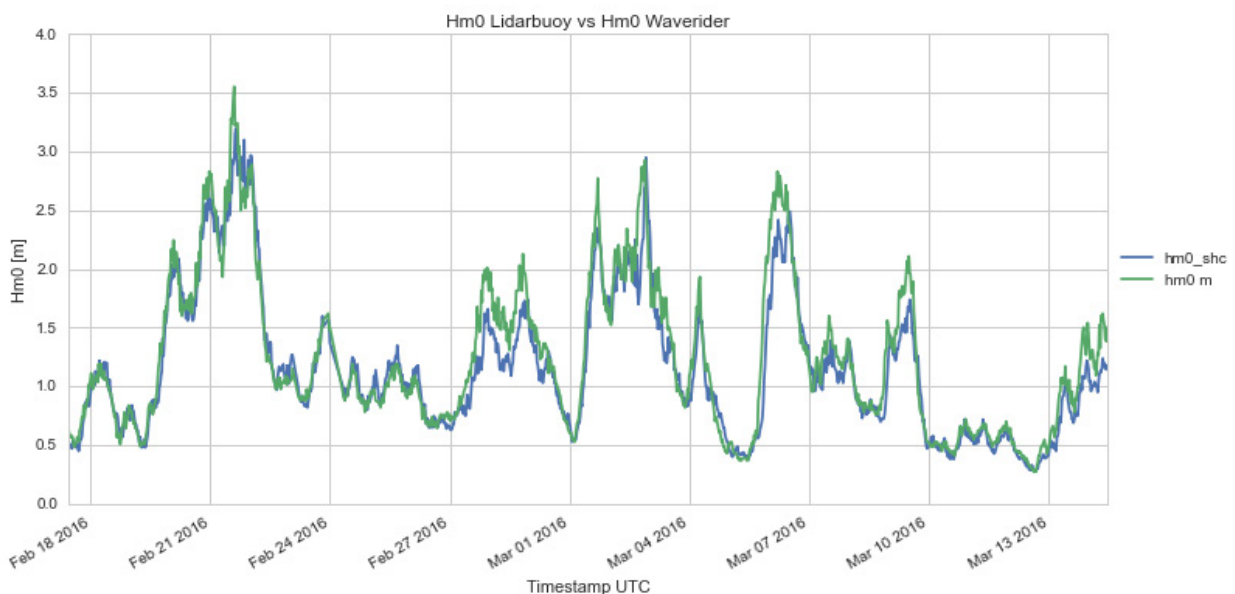


Figure 3.4 Time series plot of significant wave height (H_{m0}) from the Lidar buoy (green curve) and the Schouwenbank Waverider buoy (blue).

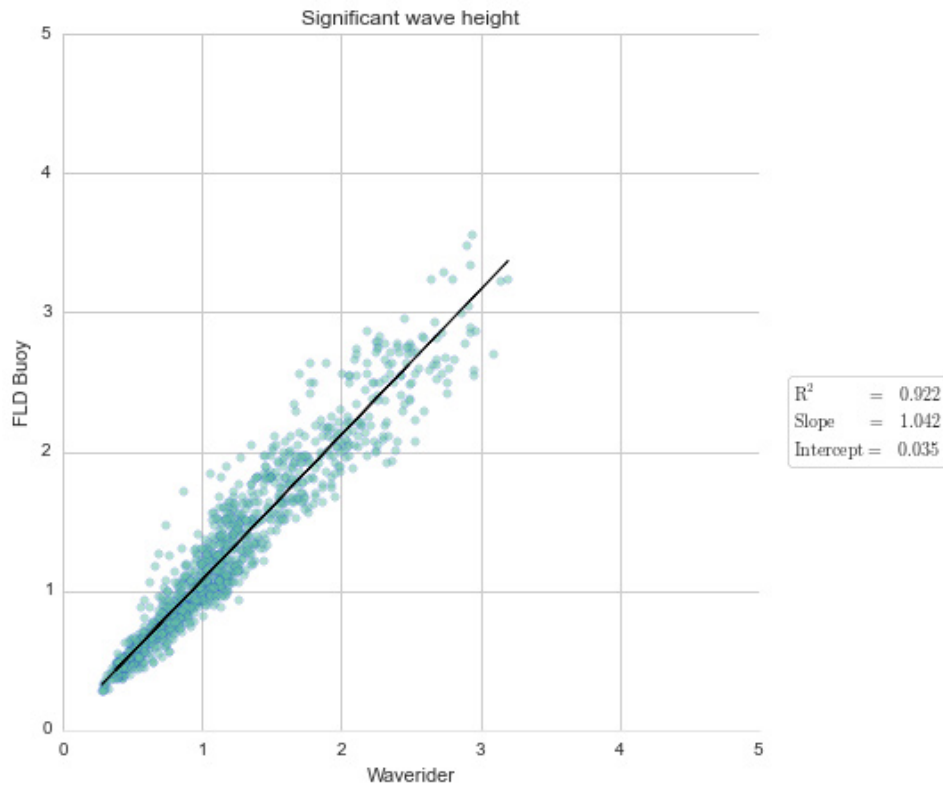


Figure 3.5 Scatter plot comparing Hm0 measured by the Lidar buoy to Hm0 from the Schouwenbank Waverider buoy.

The mean wave period (Tm02) from the Lidar buoy is compared to the Waverider Tm02 in the time series plot in Figure 3.6 and the scatter plot in Figure 3.7. The time series plot shows good coherence and the values appear very similar. The scatter plot shows $R^2 = 0.864$. Some scatter must be expected due to the distance between the stations. The average values of Tm02 are 4.30 s at the Lidar buoy compared to 4.20 s at the Waverider.

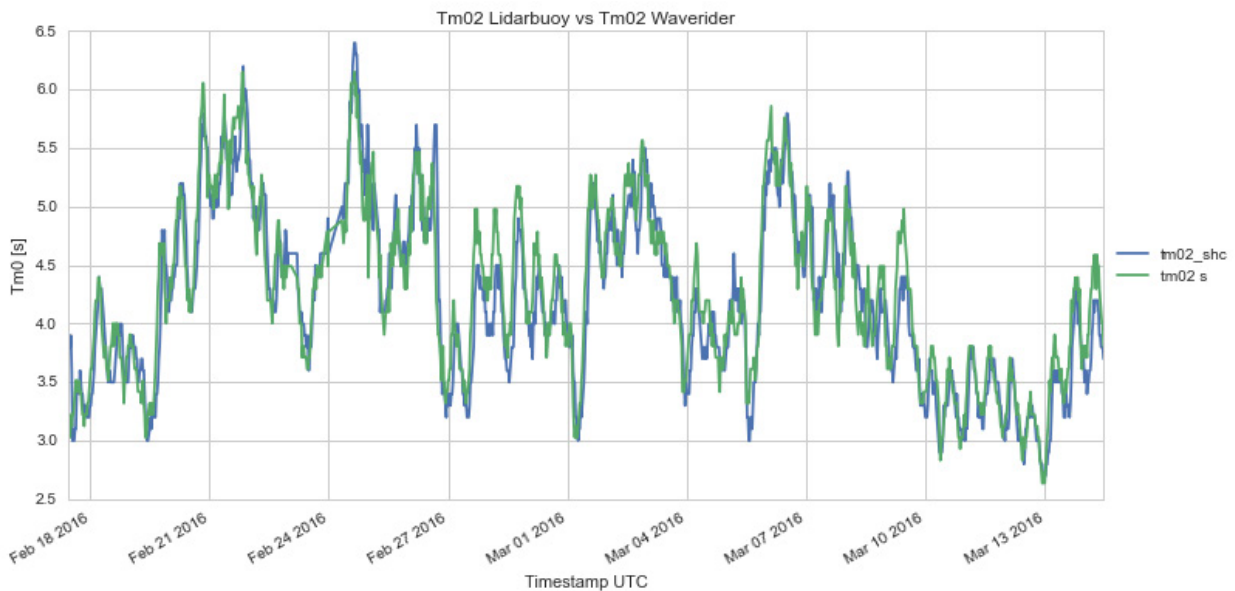


Figure 3.6 Time series plot of mean wave period (Tm02) from the Lidar buoy (green curve) and the Schouwenbank Waverider buoy (blue).

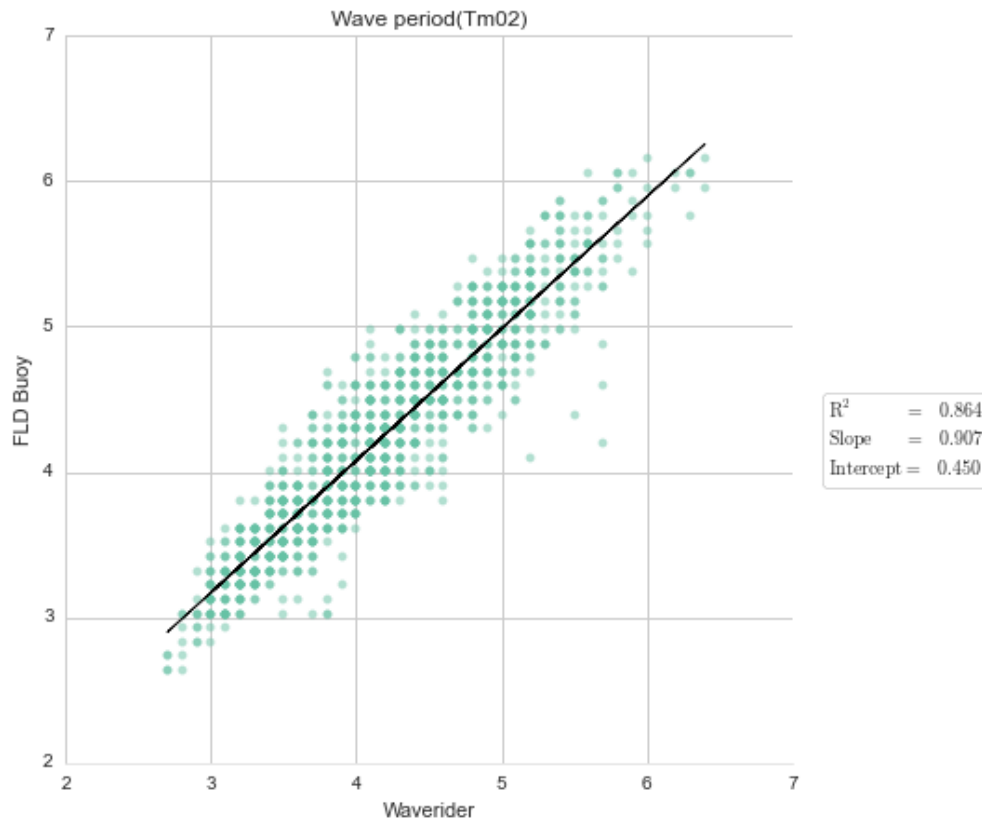


Figure 3.7 Scatter plot comparing Tm02 measured by the Lidar buoy to Tm02 from the Schouwenbank Waverider buoy.

3.3.2 Wind data

The Brouwershavensegat 02 (BG2) wind station is located about 48 km away from the BWFZ Lot 2 Lidar buoy, and closer to shore. The BG2 station is about 7 km from the nearest shore, while the buoy is 36 km from land. The wind speeds measured at anemometer height, 13.9 m above the mean sea level, have been reduced to 10 m above mean sea level by a factor of 0.944¹. The horizontal Lidar wind speed data from the lowest cell, at 30 m above the sea surface, have been compared to the wind data from SG2 adjusted from 10 m to 30 m height by a factor of 1.15. The data series presented in Figure 3.8 show good agreement in general terms; the maxima in wind speed at both locations appear at the same time, showing good coherence. In average the data compare well with a 30 m average speed of 8.81 m/s at the buoy compared to 8.65 m/s in average at the BG2 station.

The scatter plot in Figure 3.9 compares the wind speeds when the BG2 station speeds exceed 2 m/s. The correlation is seen clearly, although the scatter is quite large due to the distance between the stations and the differences in the way land effects influence the local wind. This confirms that there is no reason to suspect that the Lidar has not measured the wind speed correctly.

¹ Determined from the ratio of the wind speed at 10 m height to the wind speed measured at anemometer height as given in the original data from Rijkswaterstaat.

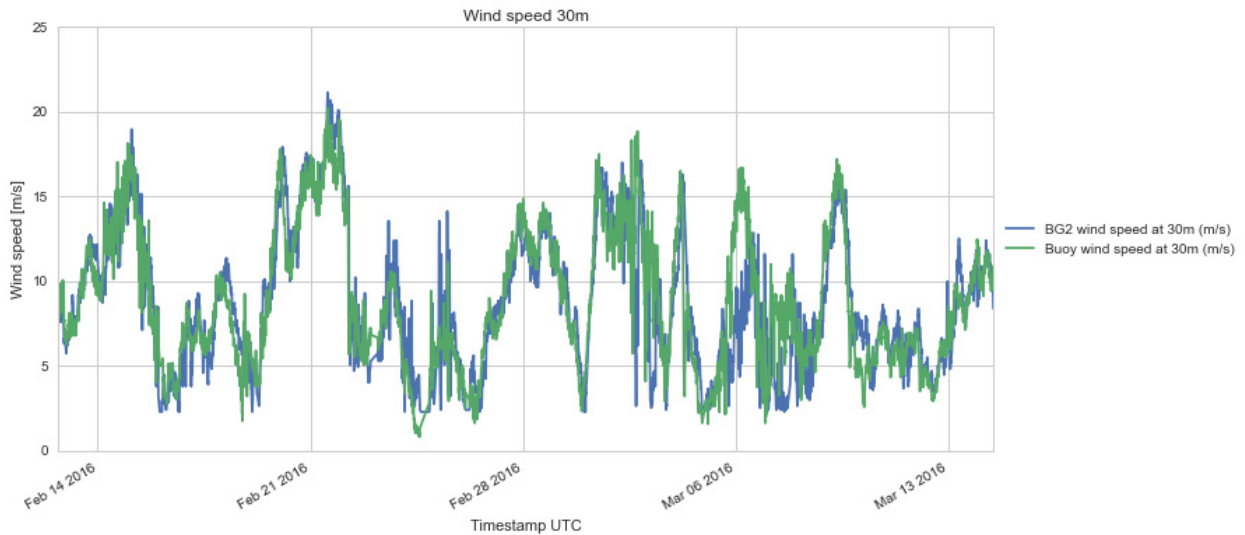


Figure 3.8 Wind speed at 30 m above sea level measured by the Lidar buoy (green curve) compared to wind speed at Brouwershavensegat 02 adjusted to 30 m (blue).

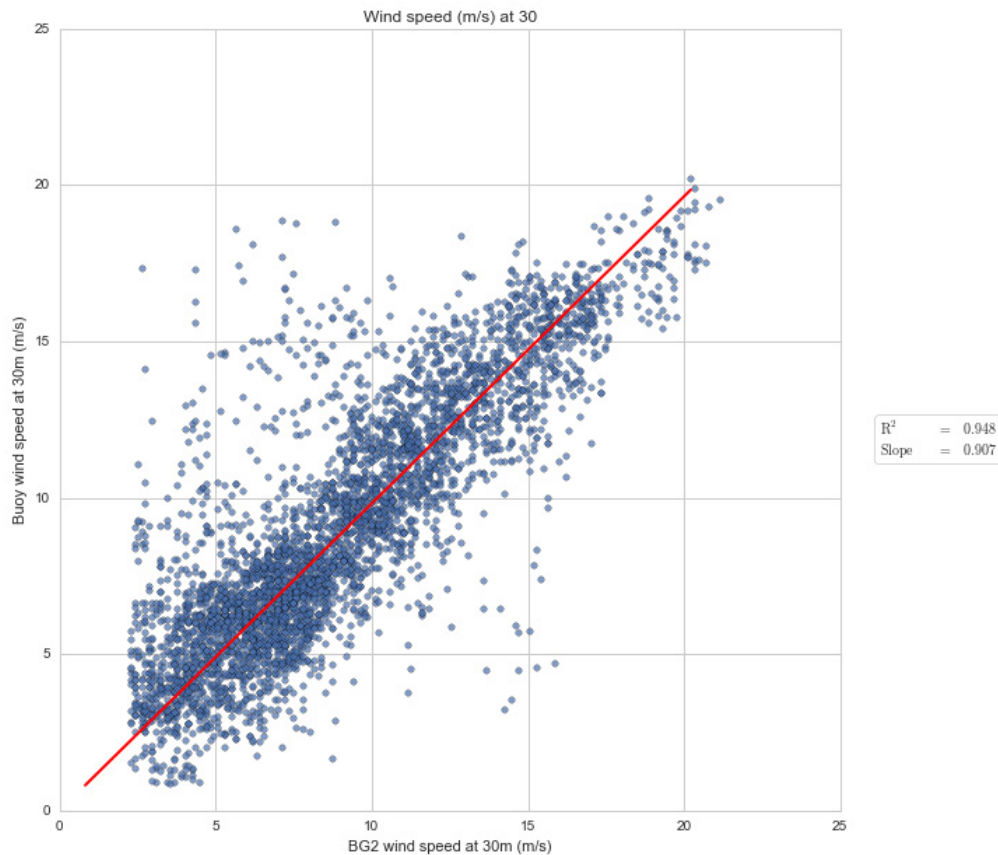


Figure 3.9 Scatter plot comparing the wind speed at 30 m above sea level measured by the Lidar buoy compared to the wind speed at Brouwershavensegat 02 adjusted to 30 m a.s.l. (Regression formula: $y = \text{Slope} * x$)

The time series of wind direction are compared in Figure 3.10, which also shows the wind speed at Brouwershavensegat 02. Samples with speed less than 2 m/s are excluded. Again we see that there is a general agreement between the measurements, and this is seen also in the scatter plot in Figure 3.11. There is practically no offset between the wind directions. The offset is calculated as the average of the

difference between the wind directions. It was expected that the wind directions would differ at any given time due to the distance between the locations, and this may explain the scatter seen in the plot.

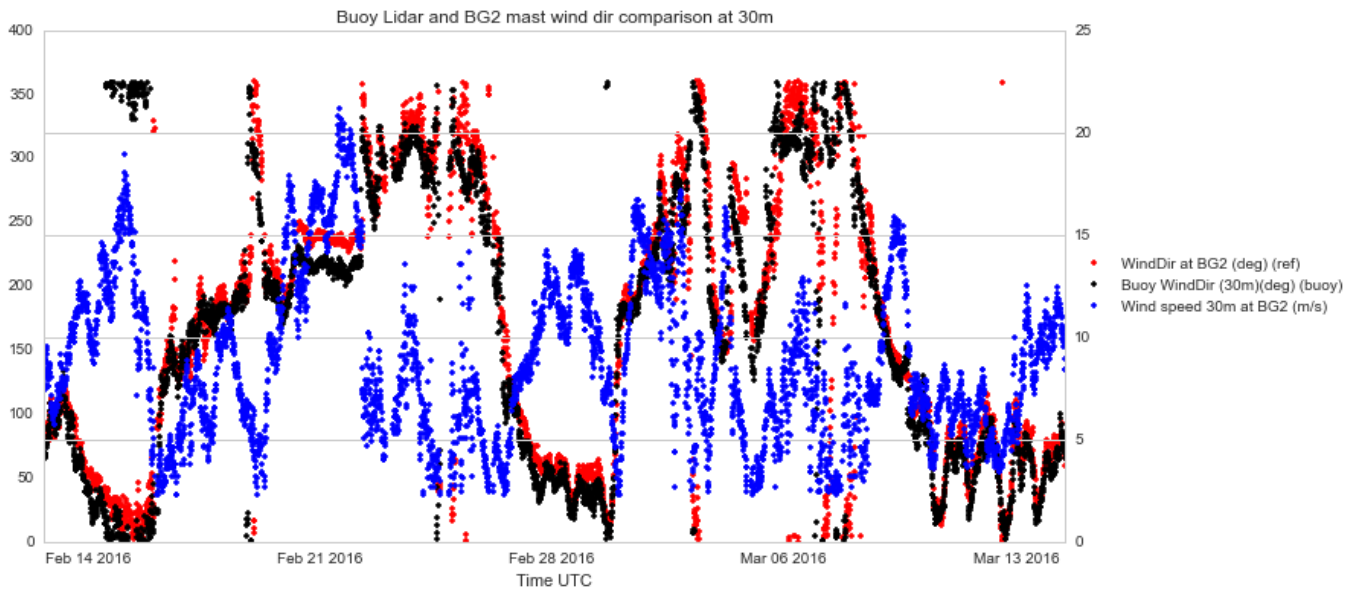


Figure 3.10 Wind direction at 30 m above sea level measured by the Lidar buoy (black dots) compared to wind direction at Brouwershavensegat 02 (red). The blue dots show the BG2 station 30m wind speeds. (Samples with BG2 wind speed less than 2 m/s are excluded.)

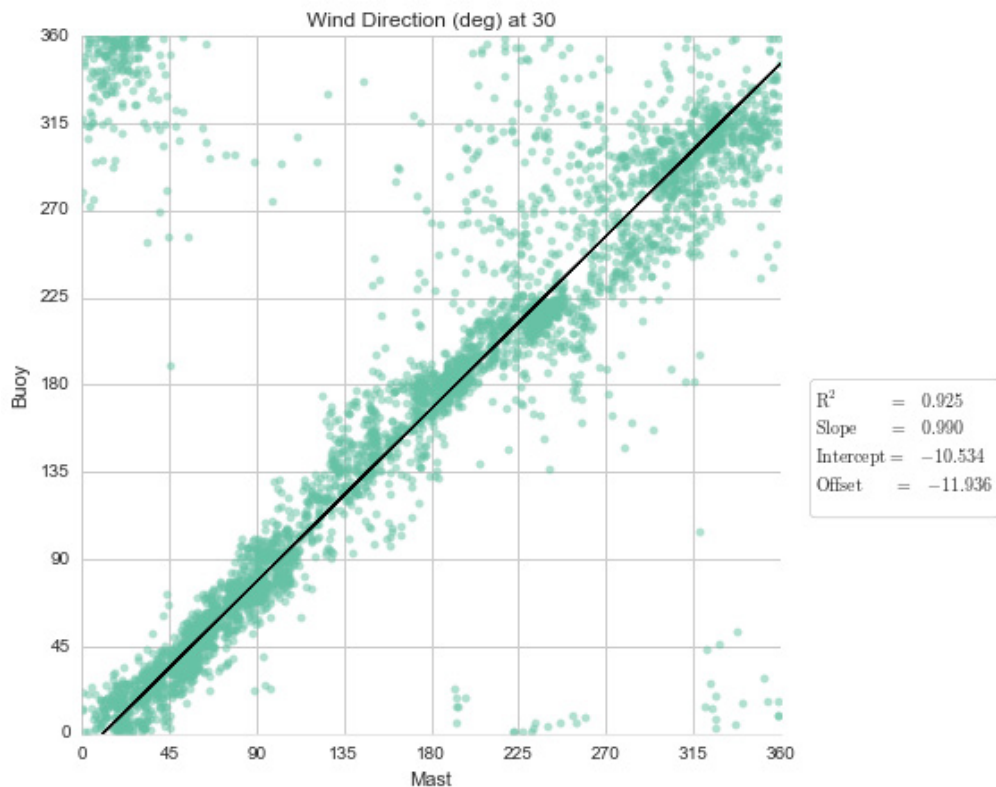


Figure 3.11 Wind direction at 30 m above sea level measured by the Lidar buoy compared to wind direction at Brouwershavensegat 02. (Samples with BG2 wind speed less than 2 m/s are excluded.) ("Offset" is the average difference of directions.)

3.4 Conclusions

The comparisons to the reference station data presented above indicate that the buoy has collected data of good quality for winds and waves. The Lot 2 Seawatch Wind Lidar buoy has transmitted data continuously during the month, but there are a few short gaps in the Lidar data where the received data are replaced by the “missing data” flag at all heights. The gaps are mainly single profile dropouts in the Lidar data only. As a result 30.812 days were required to acquire 30.5 days of actual good wind measurements.



Appendix A

Buoy deployment record

DEPLOYMENT/RECOVERY SHEET				
Project Name:	WS lidar buoy to Borssele-nederland			
Project no:	C75339	Latitude:	51°38.7780'N (y=5,721,704)	
Station name:	Borssele – Lot 2	Longitude:	2°57.0846'E (x=496,638)	
WS buoy no:	WS156	Approx. depth:	30m	
PFF numbers:	33920 – 33926	Buoy marking:		
Buoy module/sensor		Serial number/ID		
Wavesense 3 data logger		279		
XSense		0770017B		
PMU		346		
Vaisala PTB330		K2740014		
Compass		1039696		
Iridium modem		IMEI: 300125060202800 SIM: 8988169514001092381 MSISDN: 881623489332 MSISDN-C: 881692788814		
UHF service radio Adeunis ARF7940BA		B142500101 Addr:11562		
UHF service radio Adeunis ARF7940BA		B142500109 Addr: 11570		
L3 AIS		Ser.no: ? MMSI. 992572061		
Gill wind sensor		14360066		
Vaisala air HMP155 temperature/humidity		L3050100		
Buoytracker		ID: 730307 Name: Borssele 2 WS156		
LIDAR ZephIR300		501		
Flashlight		329387		
Nortek Current meter		AQP6691/AQD8621		
Fuel Cell 1		efoy : 302306-1536-36837 stack: 151010086--00092		
Fuel Cell 2		efoy : 302306-1536-36834 stack: 151010086--00088		
Fuel Cell 3		efoy : 302305-1444-34726 stack: 151010084--01192		
Fuel Cell 4		efoy : 302305-1443-34636 stack: 151010084--01171		
CONFIGURATION				
Data transmission interval:		Continuous mode. '		
Listening window		NA		
POWER OPTIONS				
Lead batteries type		4 x 62Ah		
Lithium batteries:		6 x 272Ah		
Fuel cells		4 fuel cells with 10 methanol cartridges 28 litres each.		
DEPLOYMENT HISTORY				
	YEAR	MONTH	DATE	GMT



First measurement	2016	February	12	14:10
First measurement in position	2016	February	12	16:20
Out of measuring position				
Last measurement				
Comments:				
Deployment vessel: Multisalvor 3		Recovery vessel:		
Deployed by: Edvard M. Elgsæther		Recovered by:		