



---

# IHS Kingdom Suite – Re-linking Seismic Direct Project

Work Instruction | EUAF-FNLM-CD-WI-008

Issue	Date	Prepared By	Reviewed By	Approved By Owner
01	10 June 2021	W. van Kesteren	J. Peuchen	W. van Kesteren

---

---

## Work Instruction

### 1. Introduction

This document provides a guide to reconnect IHS Kingdom projects, created using SeismicDirect, to SEG-Y files. The guide is intended for Fugro employees working with IHS Kingdom software created with the SeismicDirect functionality.

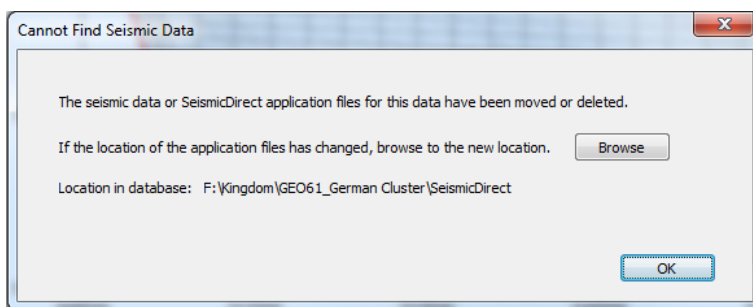
### 2. Project Structure

Projects created with use of SeismicDirect rely on links to specific folders in the project structure containing:

- SeismicDirect application files;
- SeismicDirect log files;
- Project SEG-Y files.

Connection between the Kingdom Project and these folders may be lost upon physically copying the project to a different network location. In addition, the assigned drive letter (e.g. 'D') may be different for a Kingdom Project stored on an external HDD when plugged into different computers. In both scenarios, seismic amplitude data may not be displayed in the Kingdom Suite Project. To resolve this the three SeismicDirect folders need to be re-linking to the project.

You know when you need to re-link the folders when you get the following message upon attempting to open a seismic section:



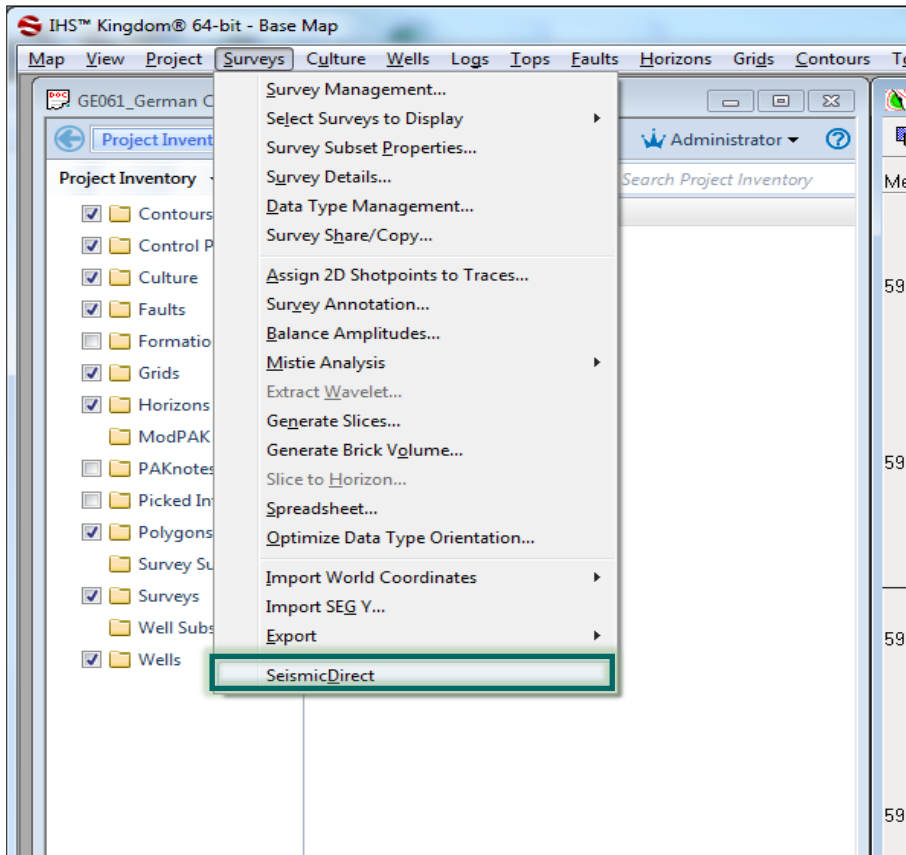
Browsing to the correct folder location (using the 'Browse' button) does have the desired effect; relinking should be done within SeismicDirect (i.e. click on 'OK').

### 3. Re-linking Folders

The following step-by-step guide will allow you to relink the SeismicDirect and SEG-Y folders and have the Kingdom Project working as intended within a couple of minutes.

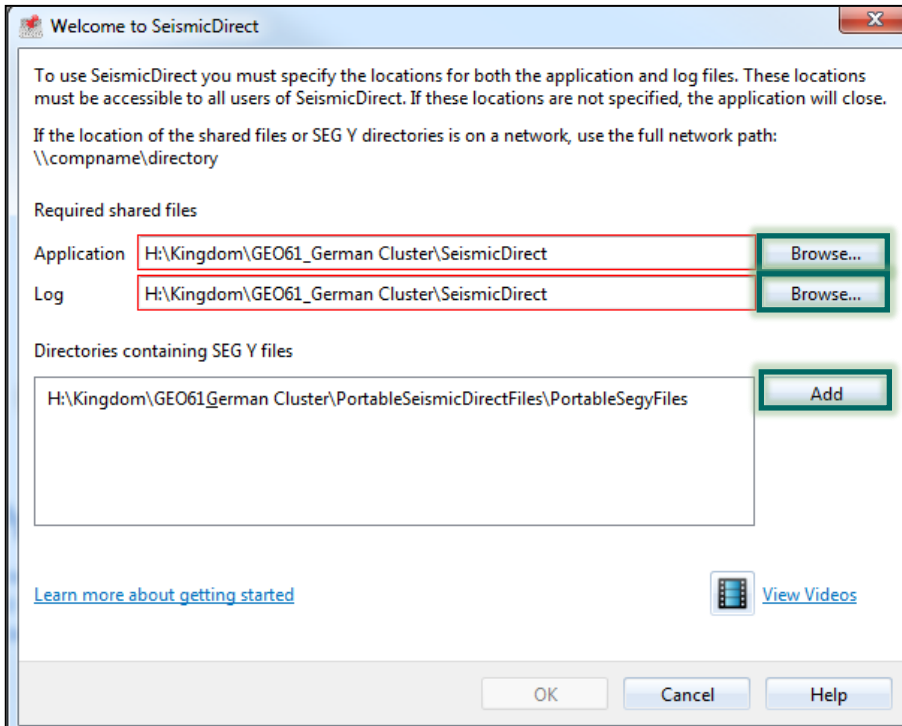
**Step 1** – Open SeismicDirect from within the Kingdom Project:

On menu bar: Surveys → SeismicDirect)

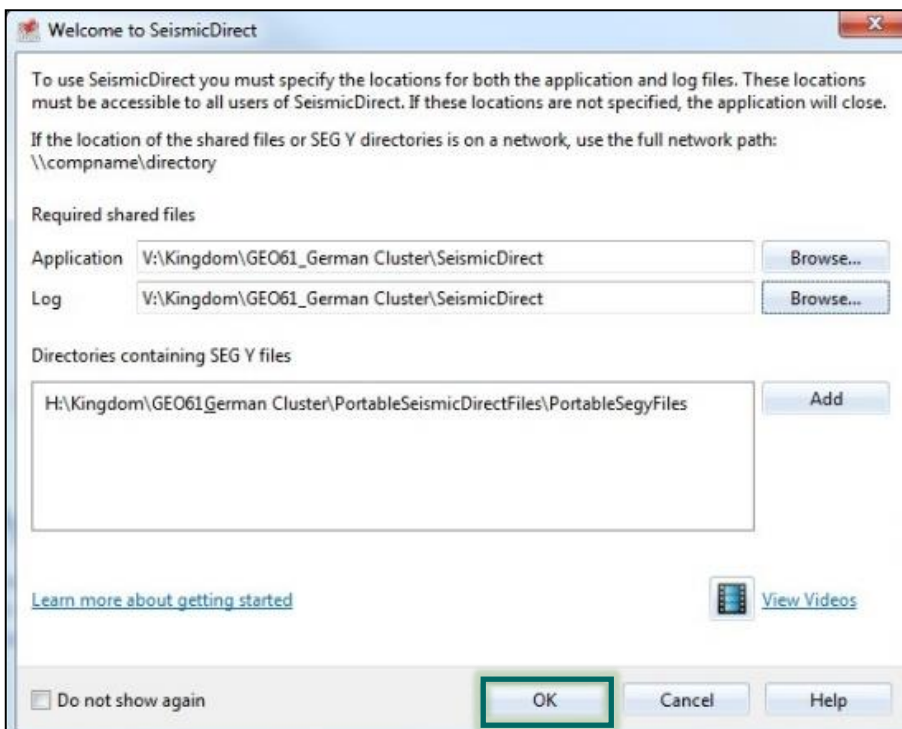


## Step 2 – Re-link 'Application' and 'Log' folders and 'SEG-Y' folder:

The initial screen in seismic direct shows the paths to the 'application' and 'log' folders. When project is not correctly linked they have a red outline:



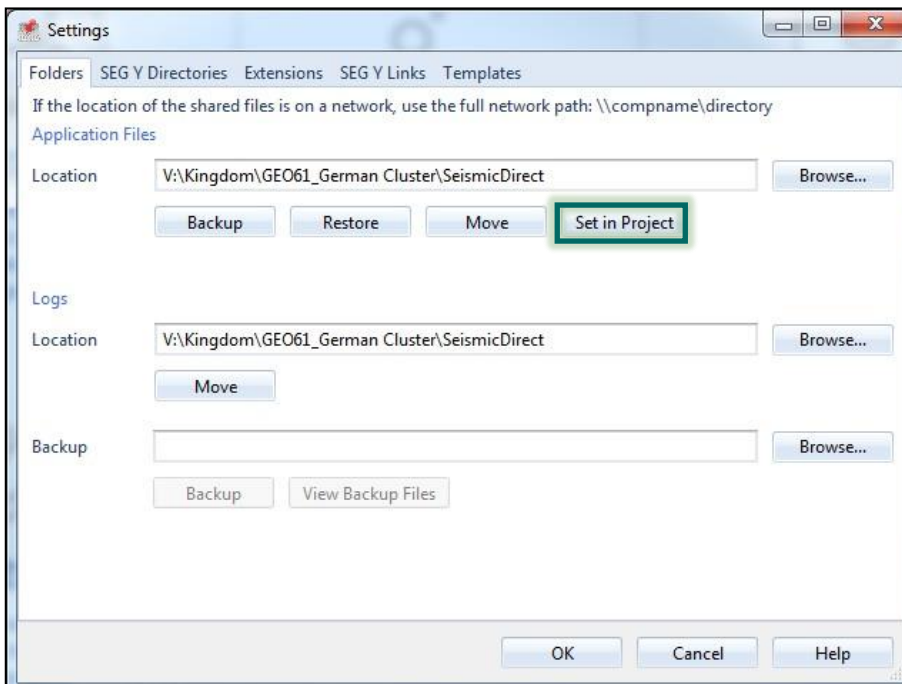
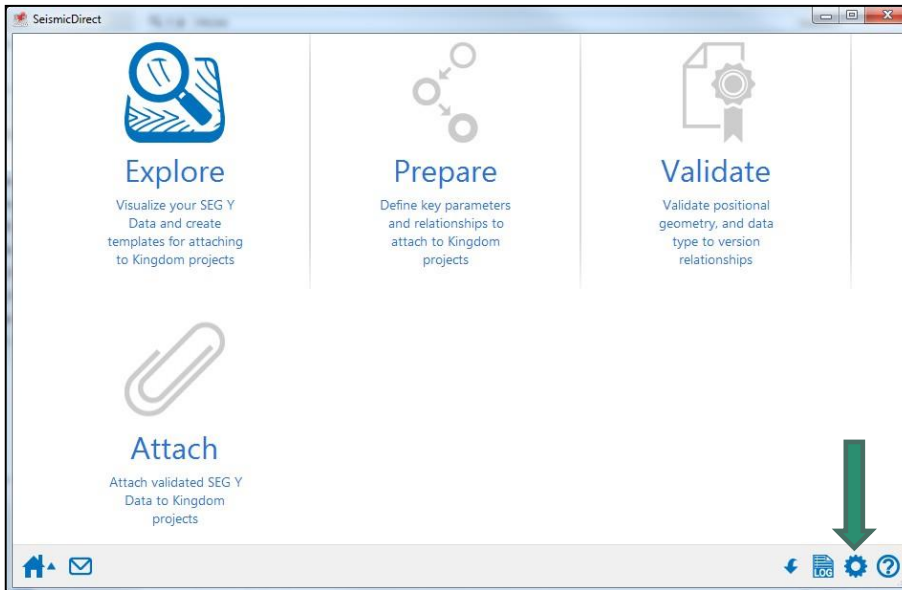
Browse to the correct folder locations. They should be in the Kingdom Project structure, e.g. the 'SeismicDirect' folder in that specific structure.



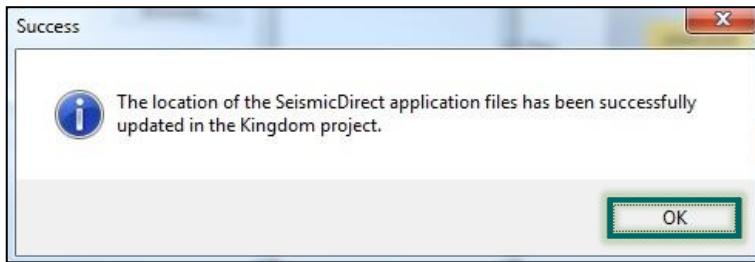
Also link to the correct directory containing the SEG-Y files. Click on 'OK' when finished.

### Step 3 – Update settings in SeismicDirect

Next, click on the settings wheel in the lower right hand corner of the main SeismicDirect window:



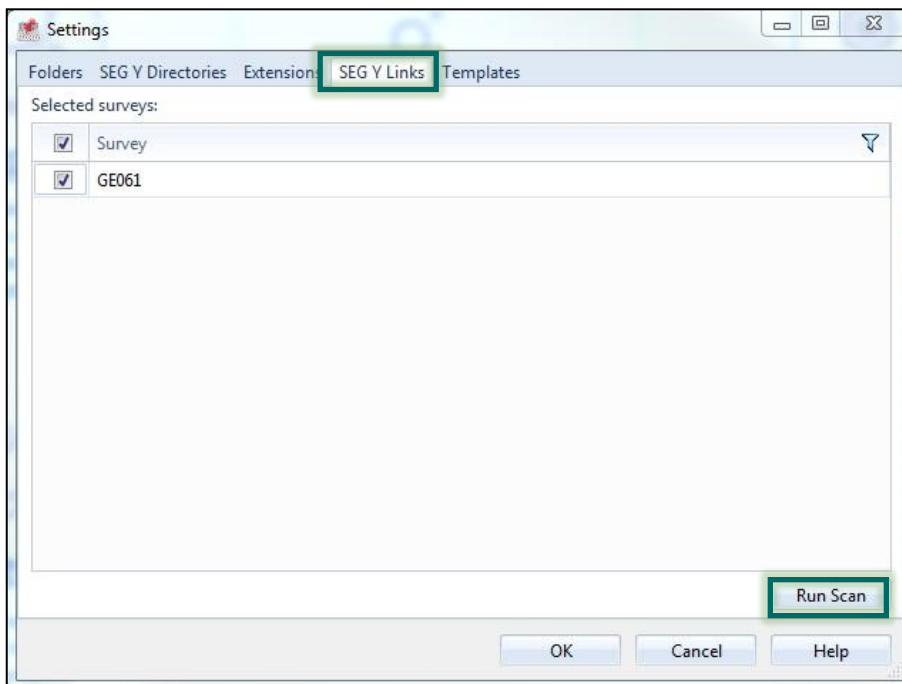
The locations of the 'application' and 'log' folders are updated following Step 2. Click on the 'Set in Project' button to save these locations in the Kingdom Project. The following message will appear.



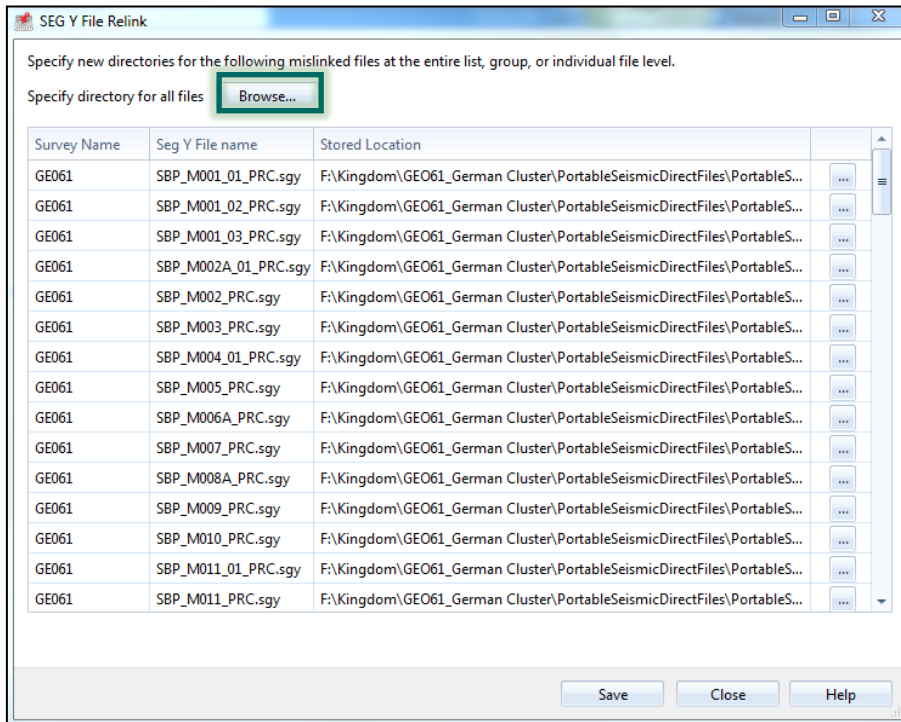
Click 'OK' to proceed to the next step.

#### **Step 4** – Scanning and updating 'SEG-Y' links

Go to the 'SEG-Y links' tab:

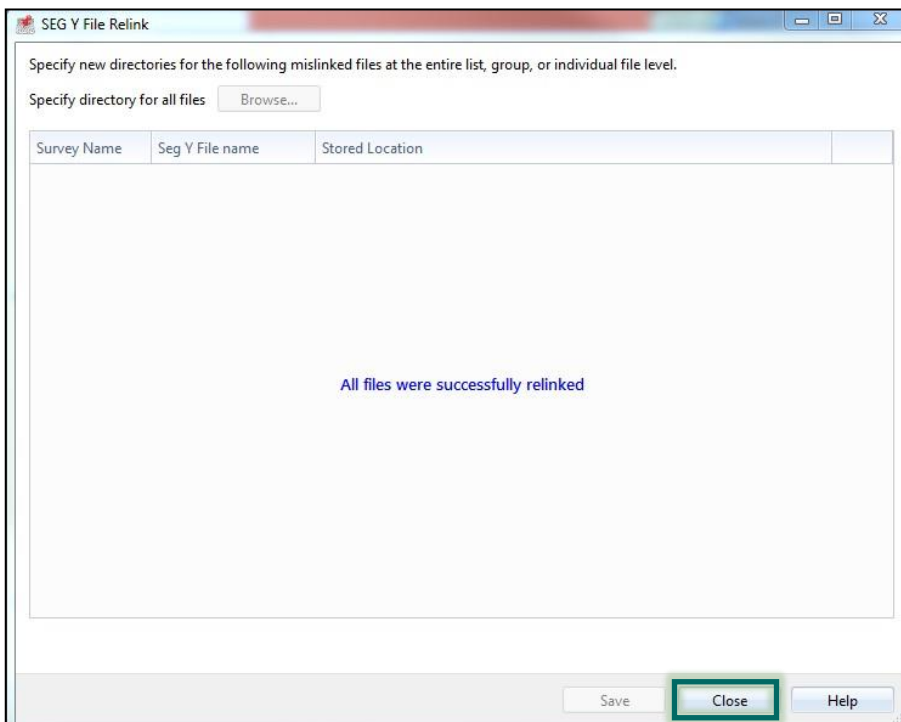


Click on 'Run Scan'. The next window will show all the SEG-Y file that have missing links:



Click on 'browse' and select the correct folder containing the SEG-Y files. The program will assess correctness of the new links. This can take a couple of minutes.

You will get the following message, indicating that all SEG-Y's are successfully relinked:



Click on 'Close' and exit Seismic Direct.

In the Kingdom Suite project environment you should now be able to open a seismic line.