

Proposed borehole locations WFS-2

Well name	Priority	MCS Line and CDP		Water Depth	X	Y	Goal
P01_S2	6	x-in800_2	6467	28	503529.93	5727417.17	Asses presence and geotechnics of gravel and boulder deposits between two paleo-channels
P02_S2		124-12400	2727	24	507878.01	5725433.98	Lateral facies variations and bedding characterization
P03_S2	2	178-x-10000	3091	24.8	506118.46	5724855.59	Assess geotechnics of large paleo-channel infill
P04_S2	4	176-x-8000	1257	30.4	502868.36	5724854.17	Assess geotechnical properties of U6 outside channel infill
P05_S2		128-12800	9757	22	506814.74	5723433.23	Assessment of geotechnics of deeper deposits
P06_S2		x-inline2800	950	35.7	506404.14	5721092.62	Check for presence of shallow gas/peat
P07_S2	1	140-14000	7204	33.7	506251.59	5720733.08	Check for presence of shallow gas/peat
P08_S2	5	104-10400	1890	27.4	502360.66	5721601.54	Assess geotechnics associated with facies variations in unit U6
P09_S2		132-13200	5233	29	504437.96	5719708.61	Assess lateral variations and sample lower deposits beneath B3
P10_S2		156-15600	5703	26	506284.38	5718174.87	Assess geotechnical properties of U6 because of facies variations
P11_S2		116-11600	11755	32.5	502137.75	5719358.09	Assess geotechnics of B3 with strong bedding
P12_S2		140-14000	2954	27.2	503645.33	5717388.09	Check for lateral variation of the U6 unit
P13_S2		164-16400	2710	21	505763.70	5716198.96	Check for geotechnical properties of older sediments because of facies variations
P14_S2		x-inline8800_2	5200	29.3	501389.39	5717396.00	Check for geotechnical properties of paleo-channel infill and older deposits of U1
P15_S2	3	120-12000	8600	23.4	506052.08	5723723.44	Assess geotechnics of channel infill and presence of gravel beds in U4

CONTRACTOR

SUBCONTRACTOR



Borehole Plan P01_S2

Page 1: Overview

PROJECT: Borssele Wind Farm Geophysical Survey

SURFACE CO-ORDINATES

PROJECTED: UTM, Z31N, ETRS89 datum

NORTHING (meters): 5727417.17

EASTING (meters): 503529.93

SEISMIC LINE: x-in800_2

DEPTHS (m)

WATER DEPTH: 28.0 m

TOTAL DEPTH: 128.0 m

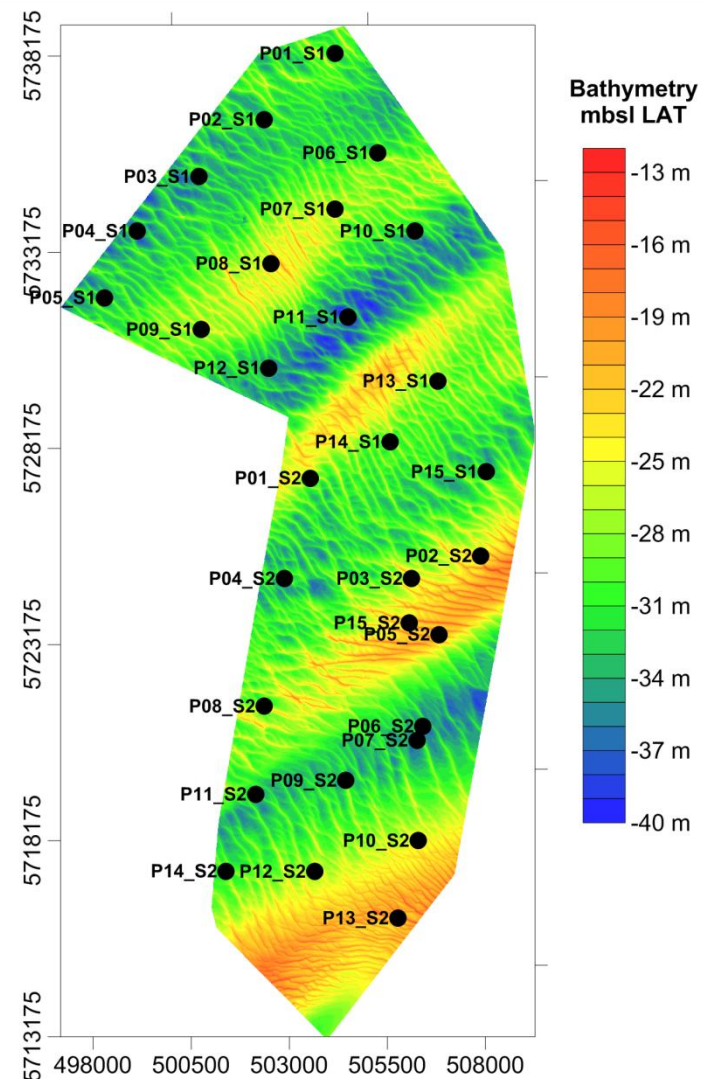
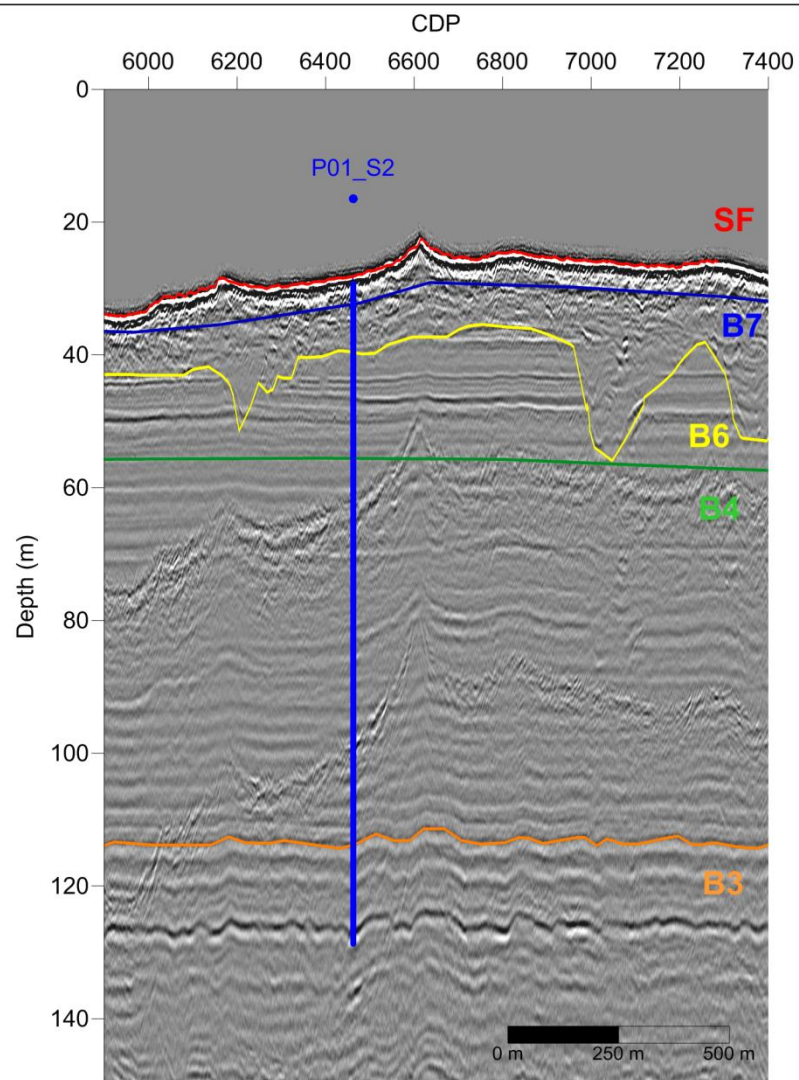
SCALE

Vertical

1 / 10

Horizontal

1 / 150



CONTRACTOR

SUBCONTRACTOR

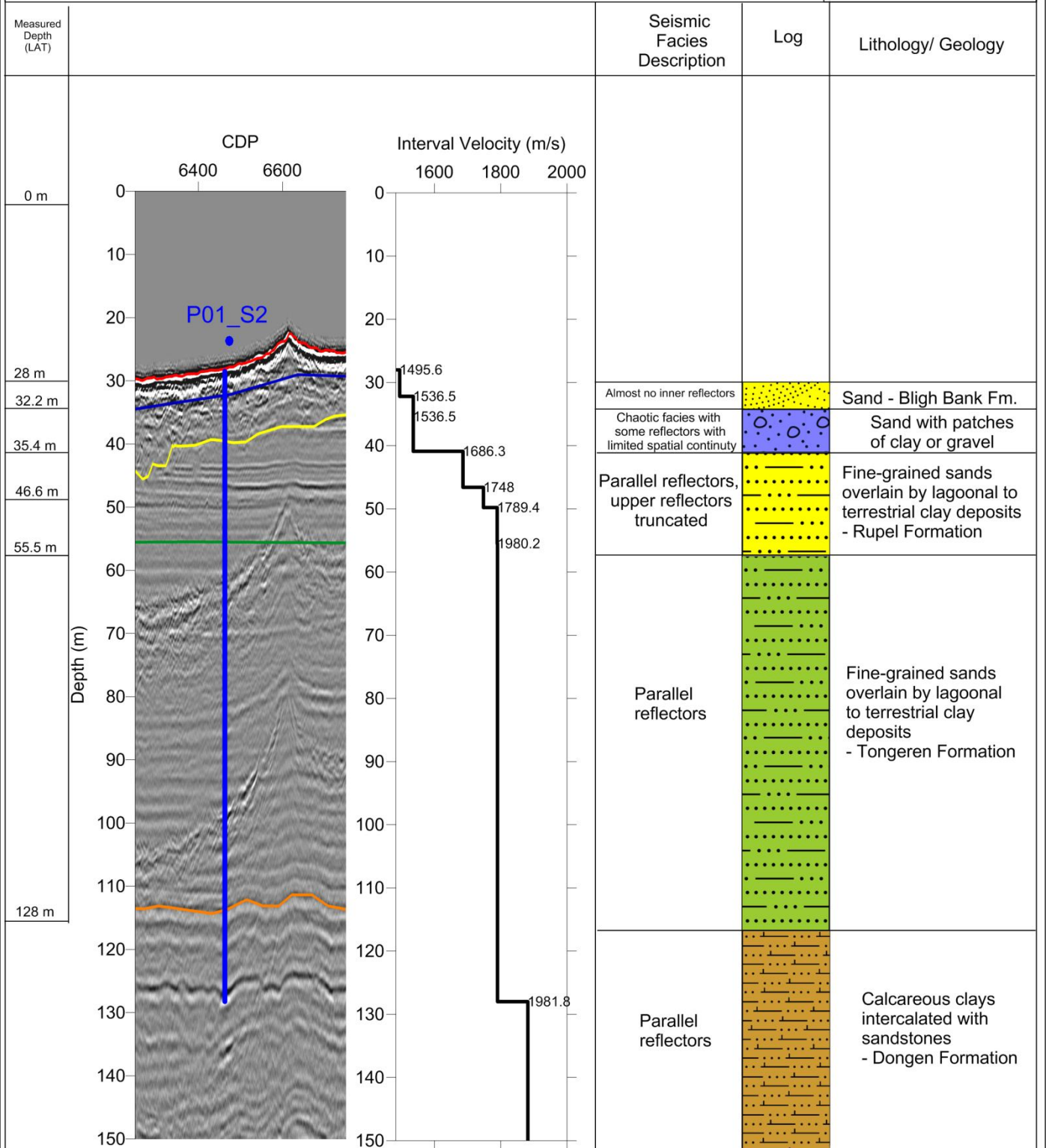


Borehole Plan P01_S2

Page 2: Prognosis

PROJECT: Borssele Wind Farm Geophysical Survey

SURFACE CO-ORDINATES
PROJECTED: UTM, Z31N, ETRS89 datum
NORTHING (meters): 5727417.17
EASTING (meters): 503529.93
SEISMIC LINE: x-in800_2
WATER DEPTH: 28 m
TOTAL DEPTH: 128 m
Vertical: 1 / 300
Horizontal: 1 / 20



CONTRACTOR

SUBCONTRACTOR



Borehole Plan P02_S2

Page 1: Overview

PROJECT: Borssele Wind Farm Geophysical Survey

SURFACE CO-ORDINATES

PROJECTED: UTM, Z31N, ETRS89 datum

NORTHING (meters): 5725433.98

EASTING (meters): 507878.01

SEISMIC LINE: 124-12400

DEPTHS (m)

WATER DEPTH: 24.0 m

TOTAL DEPTH: 124.0 m

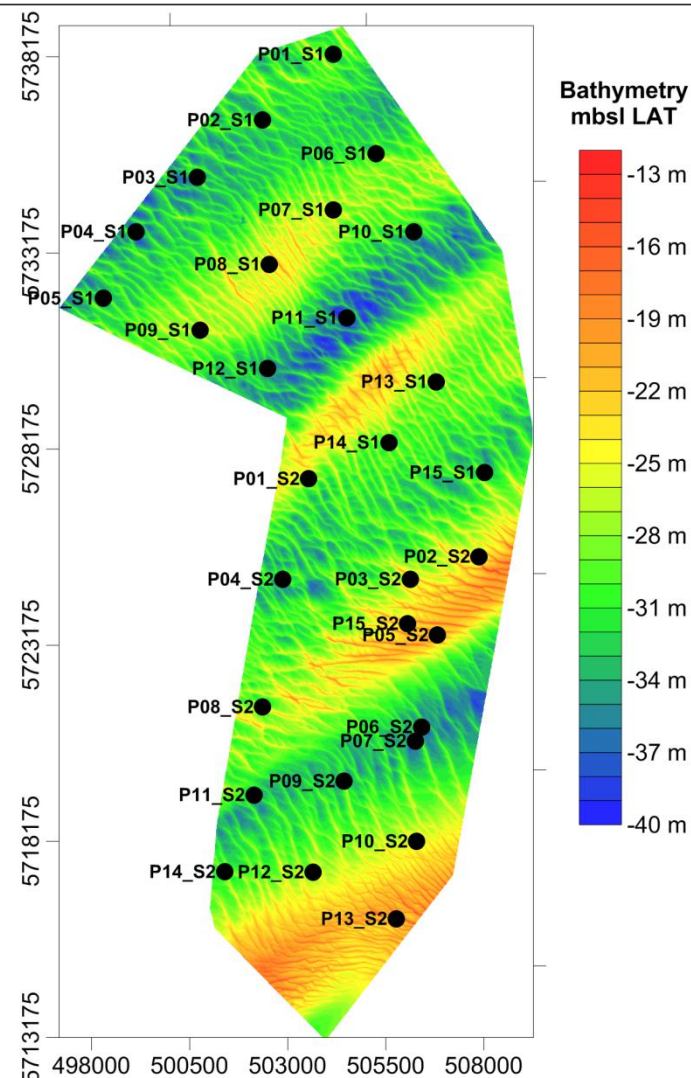
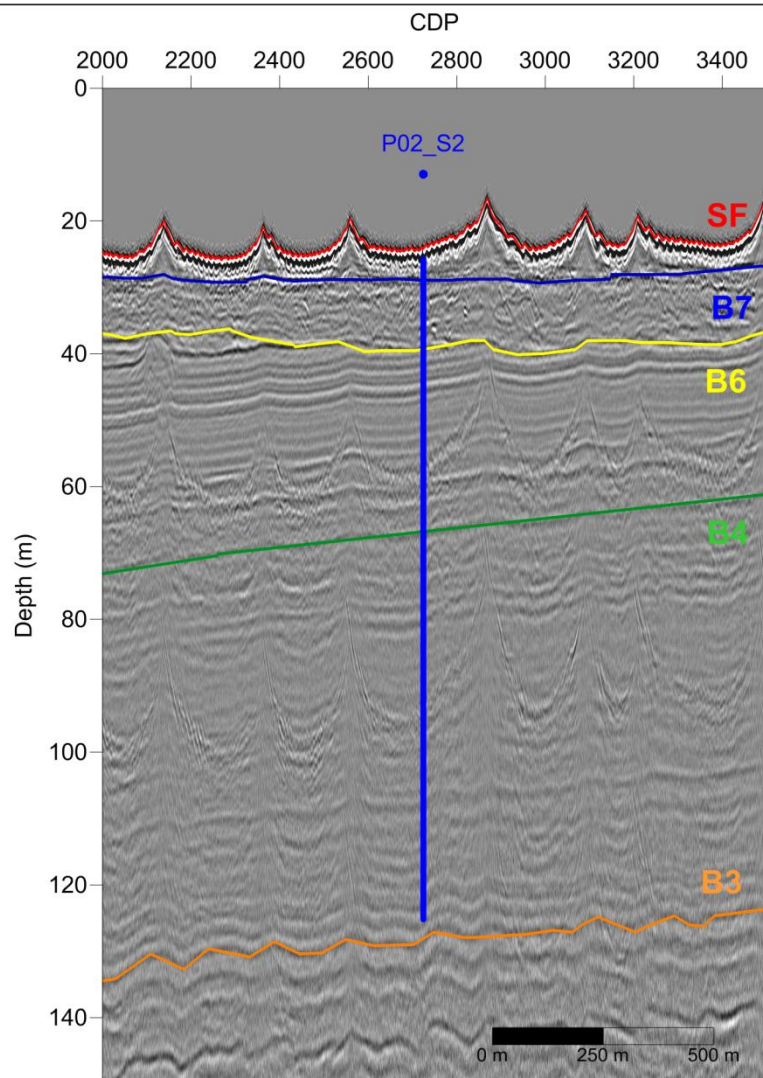
SCALE

Vertical

1 / 10

Horizontal

1 / 150



CONTRACTOR

SUBCONTRACTOR

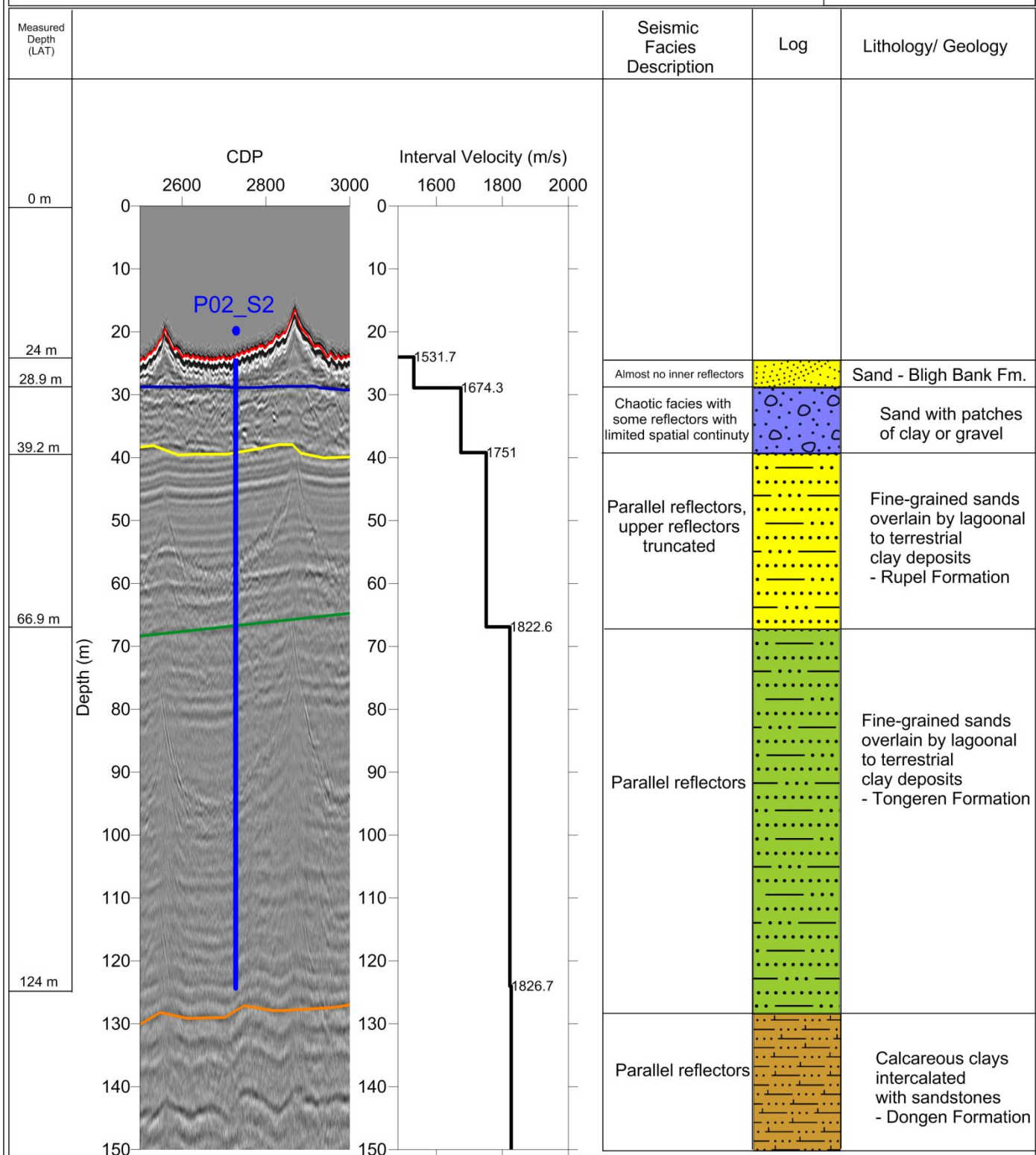


Borehole Plan P02_S2

Page 2: Prognosis

PROJECT: Borssele Wind Farm Geophysical Survey

SURFACE CO-ORDINATES
PROJECTED: UTM, Z31N, ETRS89 datum
NORTHING (meters): 5725433.98
EASTING (meters): 507878.01
SEISMIC LINE: 124_12400
WATER DEPTH: 24 m
TOTAL DEPTH: 124 m
Vertical: 1 / 300
Horizontal: 1 / 20



CONTRACTOR

SUBCONTRACTOR



Borehole Plan P03_S2

Page 1: Overview

PROJECT: Borssele Wind Farm Geophysical Survey

SURFACE CO-ORDINATES

PROJECTED: UTM, Z31N, ETRS89 datum

NORTHING (meters): 5724855.59

EASTING (meters): 506118.46

SEISMIC LINE: 178-x-10000

DEPTHS (m)

WATER DEPTH: 24.8 m

TOTAL DEPTH: 124.8 m

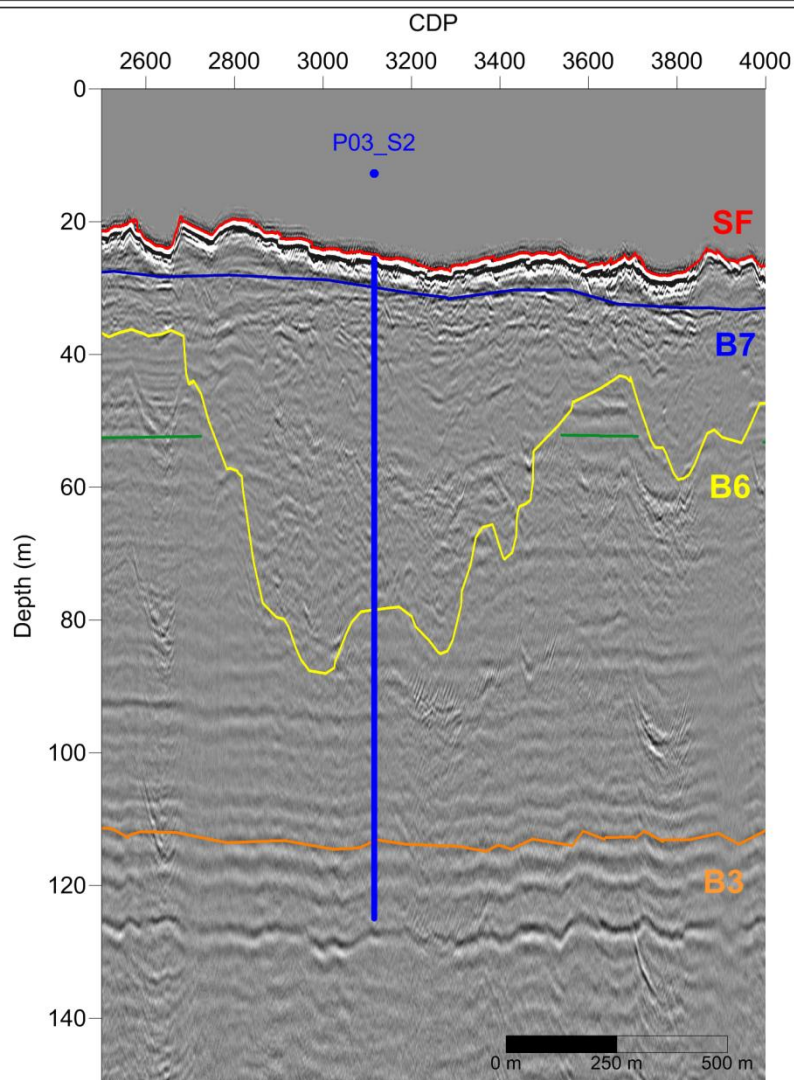
SCALE

Vertical

1 / 10

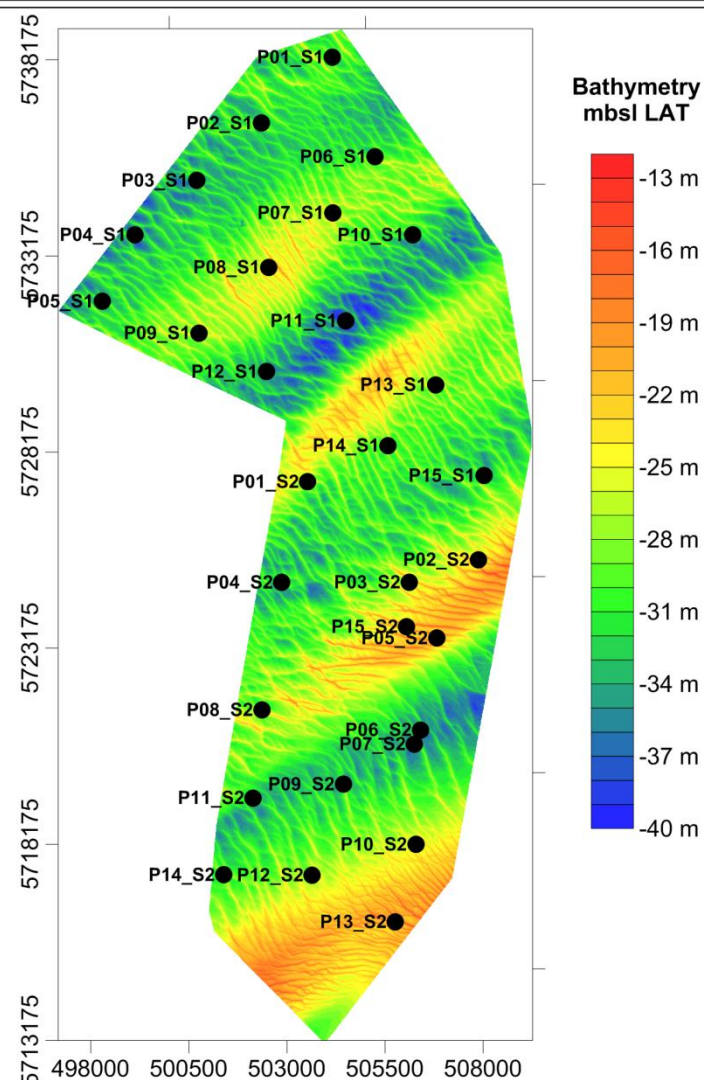
Horizontal

1 / 150



Line - 178-x-10000

B# represents the interpreted horizons in seismic sections.



CONTRACTOR

SUBCONTRACTOR

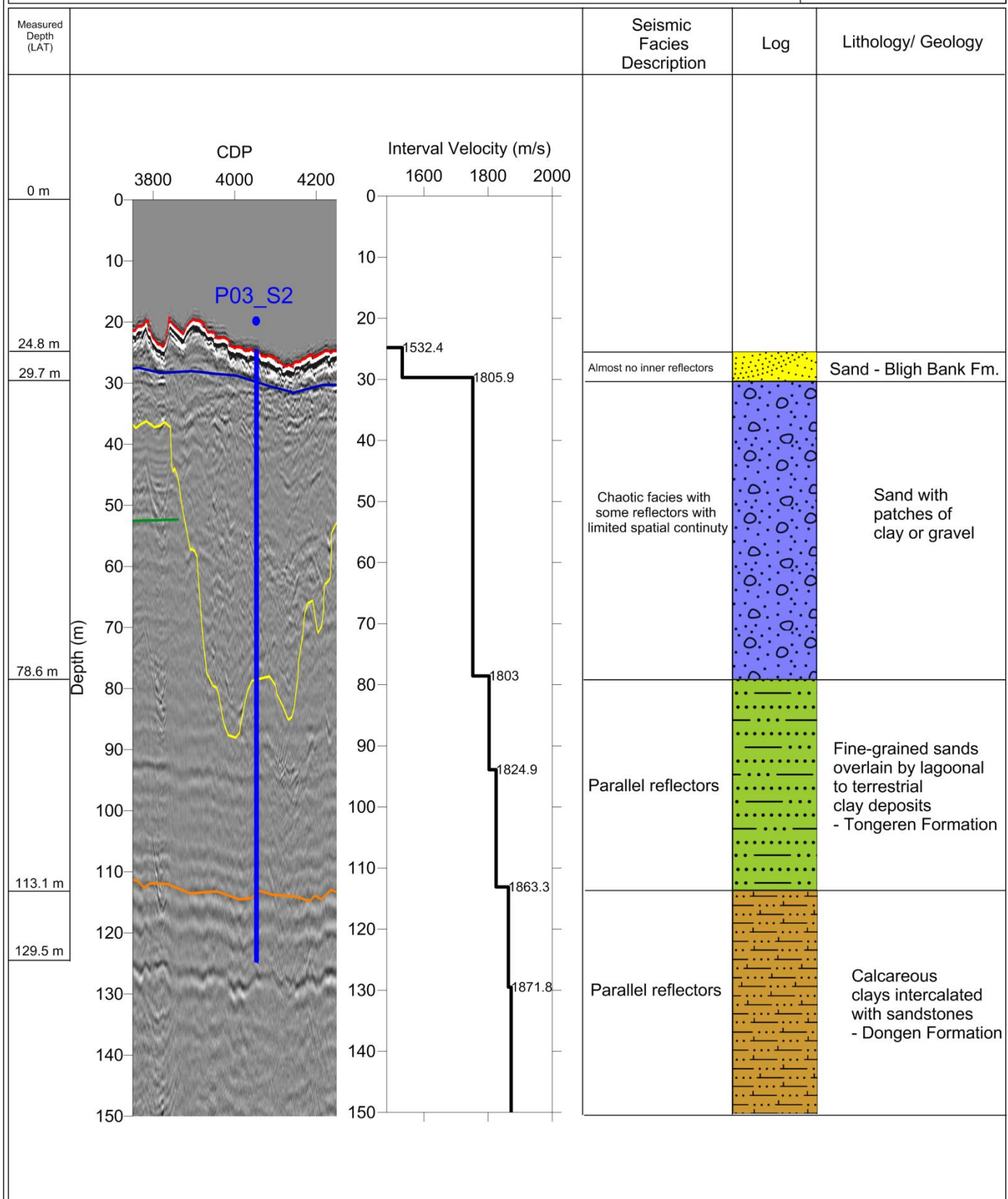


Borehole Plan P03_S2

Page 2: Prognosis

PROJECT: Borssele Wind Farm Geophysical Survey

SURFACE CO-ORDINATES
PROJECTED: UTM, Z31N, ETRS89 datum
NORTHING (meters): 5724855.59
EASTING (meters): 506118.46
SEISMIC LINE: 178-x-10000
WATER DEPTH: 24.8 m
TOTAL DEPTH: 124.8 m
Vertical: 1 / 300
Horizontal: 1 / 20



CONTRACTOR

SUBCONTRACTOR



Borehole Plan P04_S2

Page 1: Overview

PROJECT: Borssele Wind Farm Geophysical Survey

SURFACE CO-ORDINATES

PROJECTED: UTM, Z31N, ETRS89 datum

NORTHING (meters): 5724854.17

EASTING (meters): 502868.36

SEISMIC LINE: 176-x-8000

DEPTHS (m)

WATER DEPTH: 30.4 m

TOTAL DEPTH: 130.4 m

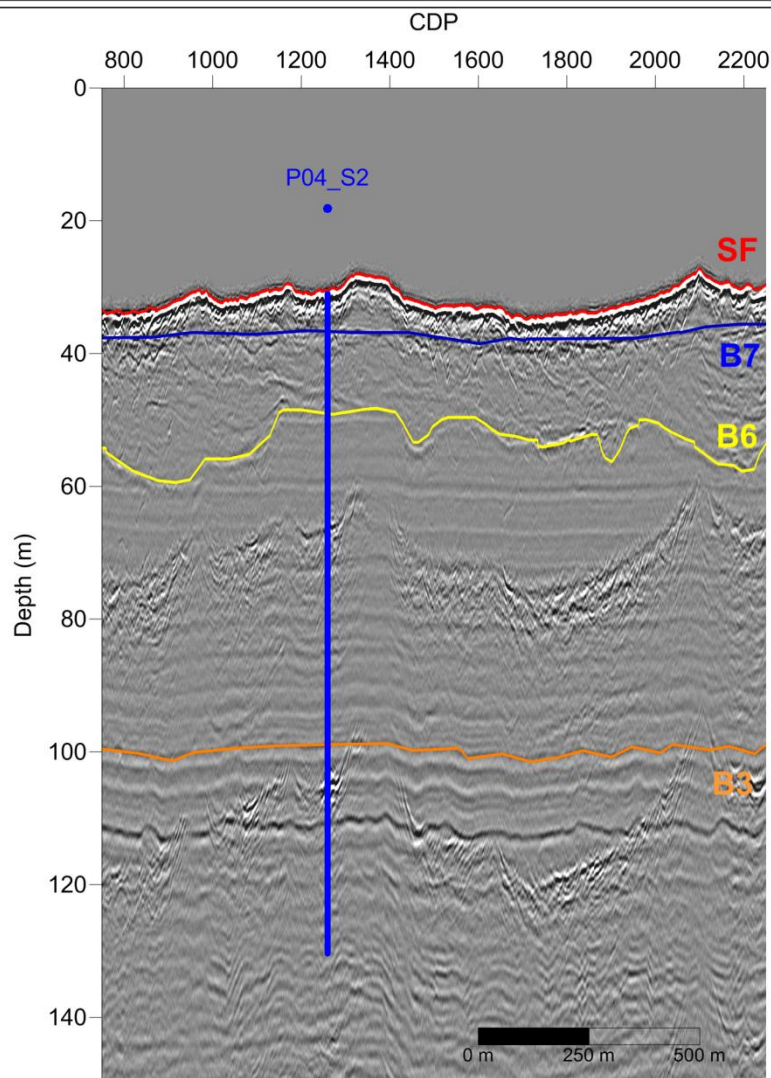
SCALE

Vertical

1 / 10

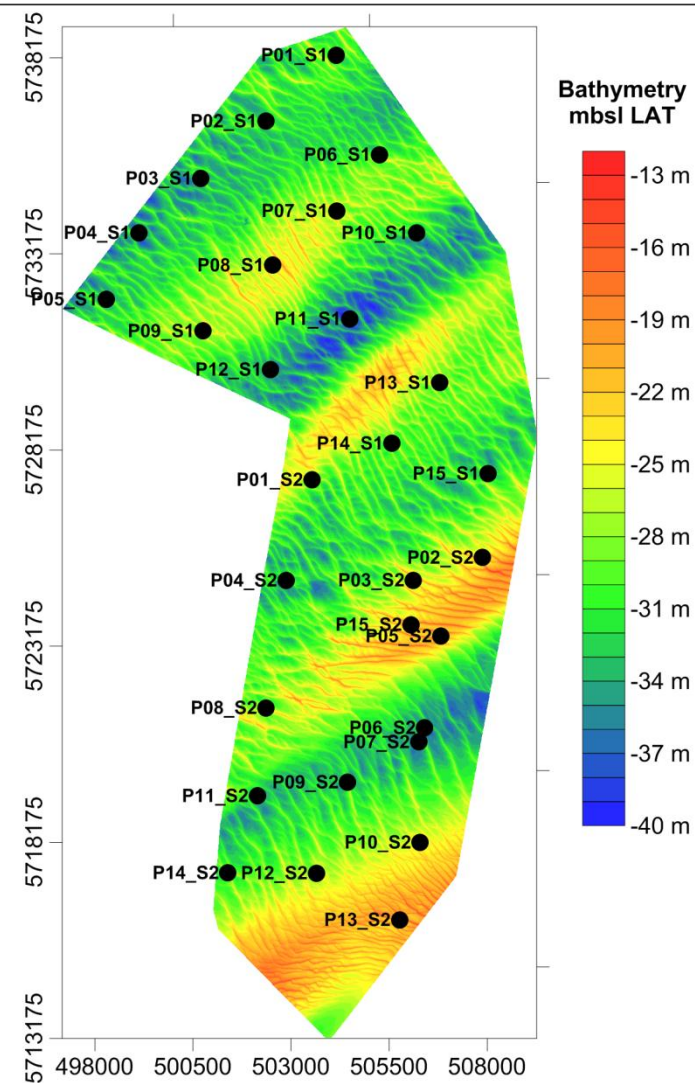
Horizontal

1 / 150



Line - 176-x-8000

B# represents the interpreted horizons in seismic sections.



CONTRACTOR

SUBCONTRACTOR

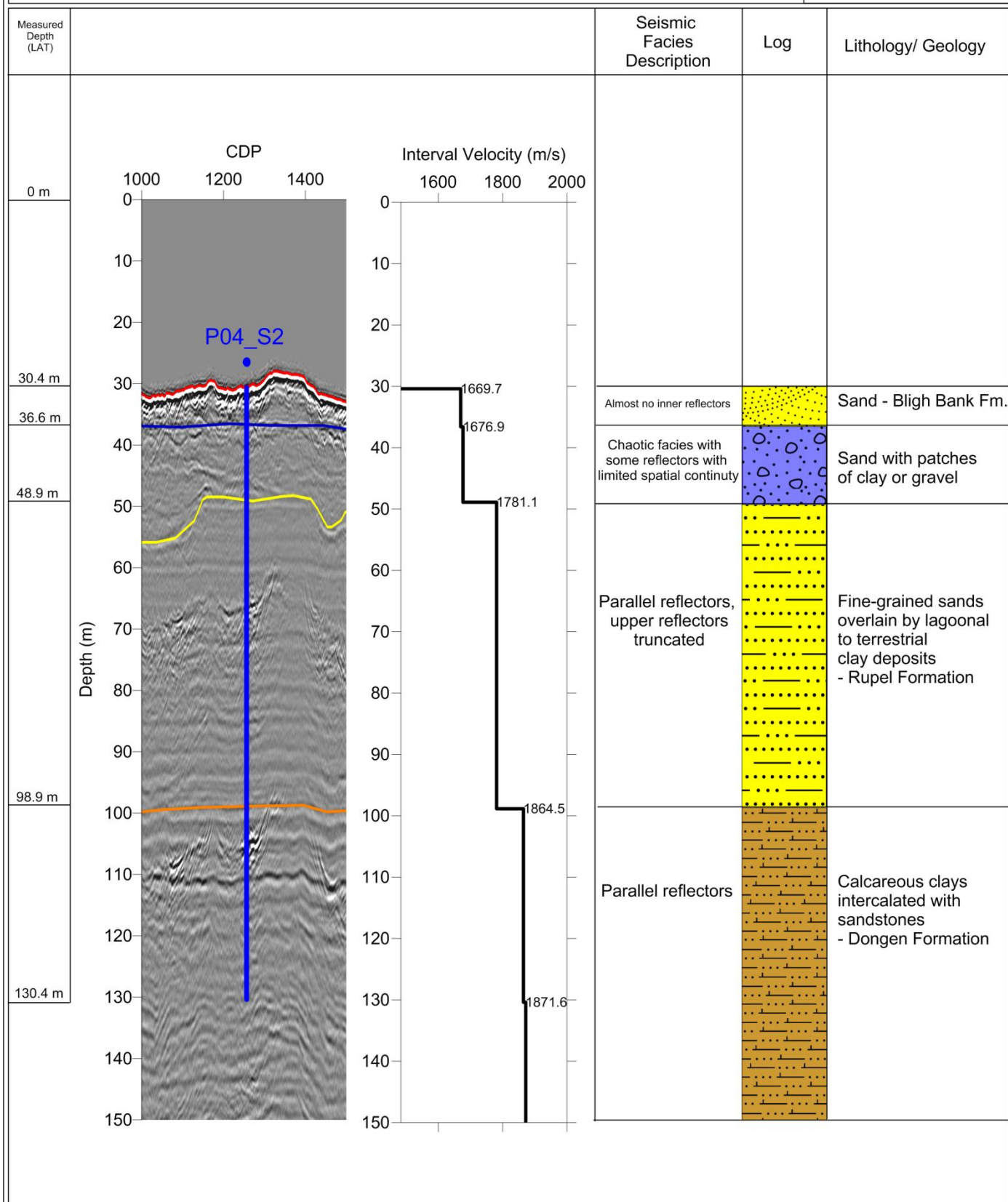


Borehole Plan P04_S2

Page 2: Prognosis

PROJECT: Borssele Wind Farm Geophysical Survey

SURFACE CO-ORDINATES
PROJECTED: UTM, Z31N, ETRS89 datum
NORTHING (meters): 5724854.17
EASTING (meters): 502868.36
SEISMIC LINE: 176-x-8000
DEPTHS (m) **WATER DEPTH:** 30.4 m
TOTAL DEPTH: 130.4 m
SCALE **Vertical:** 1 / 300
Horizontal: 1 / 20



CONTRACTOR

SUBCONTRACTOR



Borehole Plan P05_S2

Page 1: Overview

PROJECT: Borssele Wind Farm Geophysical Survey

SURFACE CO-ORDINATES

PROJECTED: UTM, Z31N, ETRS89 datum

NORTHING (meters): 5723433.23

EASTING (meters): 506814.74

SEISMIC LINE: 128-12800

DEPTHS (m)

WATER DEPTH: 22.0 m

TOTAL DEPTH: 122.0 m

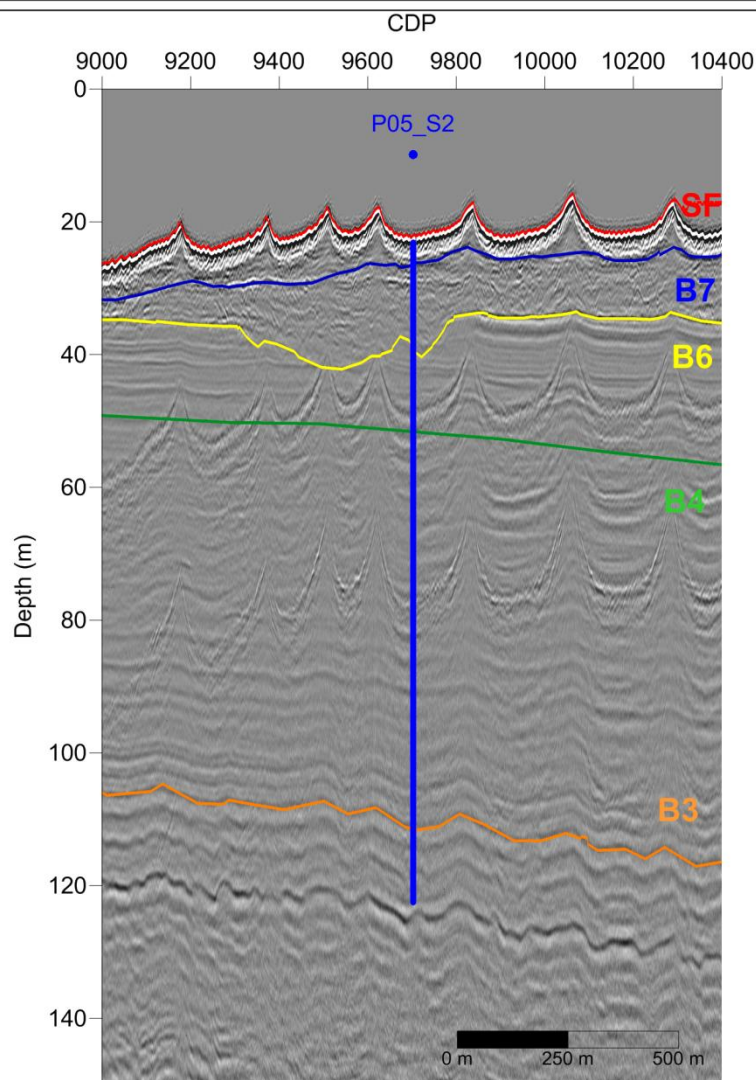
SCALE

Vertical

1 / 10

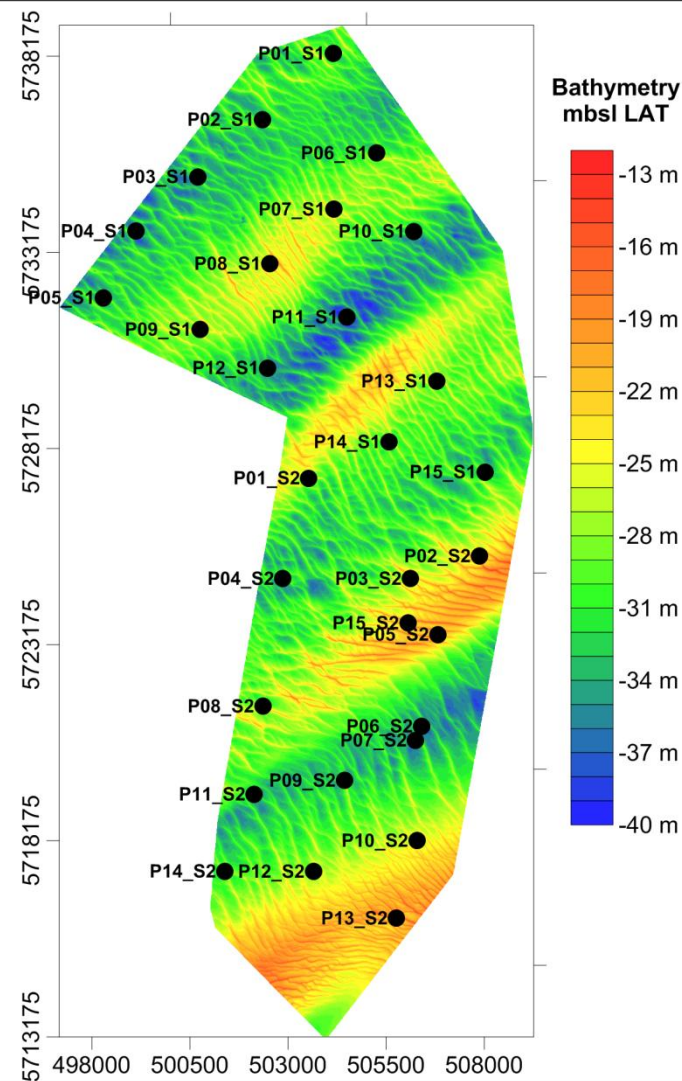
Horizontal

1 / 150



Line - 128-12800

B# represents the interpreted horizons in seismic sections.



CONTRACTOR

SUBCONTRACTOR

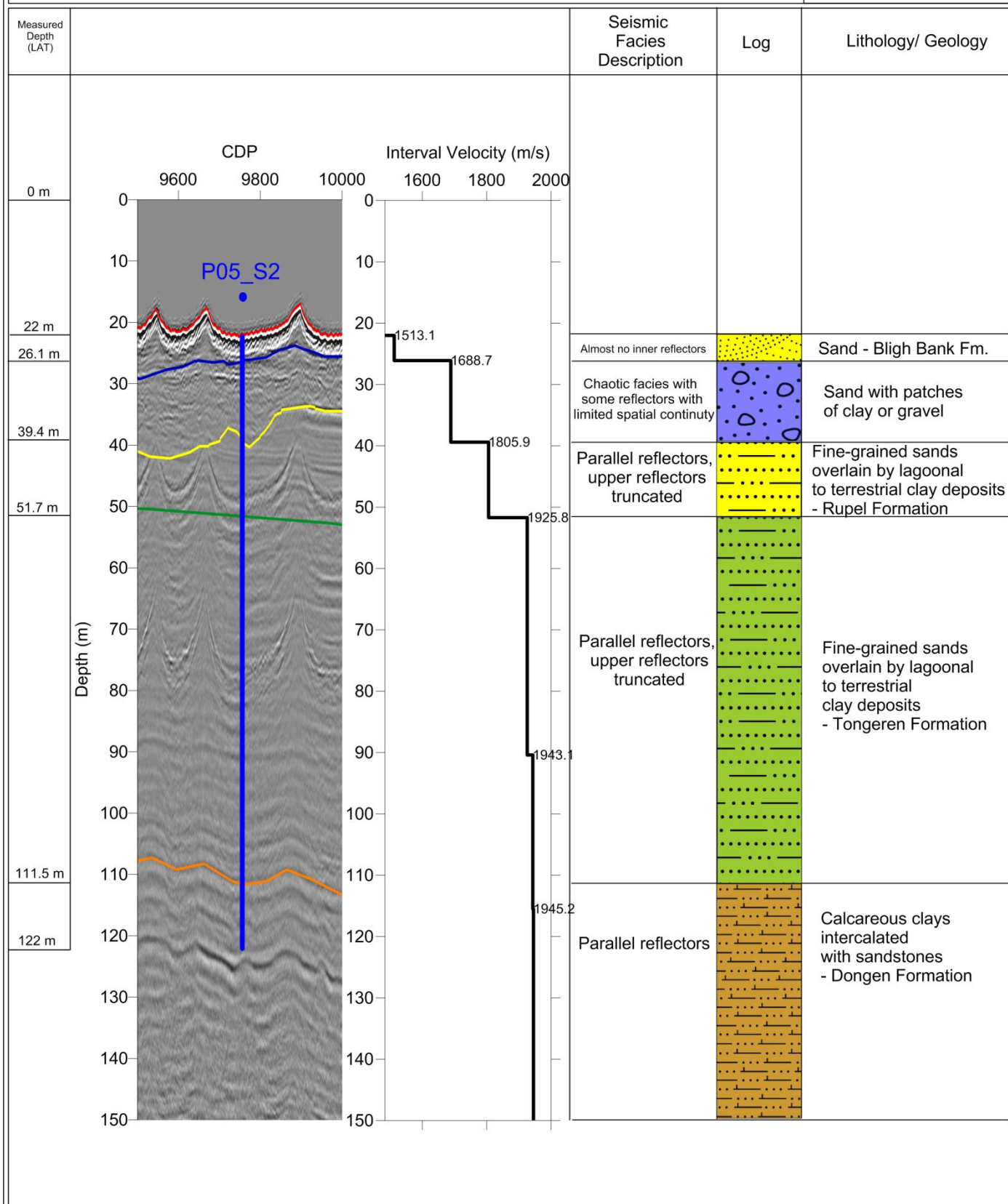


Borehole Plan P05_S2

Page 2: Prognosis

PROJECT: Borssele Wind Farm Geophysical Survey

SURFACE CO-ORDINATES
PROJECTED: UTM, Z31N, ETRS89 datum
NORTHING (meters): 5723433.23
EASTING (meters): 506814.74
SEISMIC LINE: 128-12800
WATER DEPTH: 22 m
TOTAL DEPTH: 122 m
Vertical: 1 / 300
Horizontal: 1 / 20



CONTRACTOR

SUBCONTRACTOR



Borehole Plan P06_S2

Page 1: Overview

PROJECT: Borssele Wind Farm Geophysical Survey

SURFACE CO-ORDINATES

PROJECTED: UTM, Z31N, ETRS89 datum

NORTHING (meters): 5721092.62

EASTING (meters): 506404.14

SEISMIC LINE: x-in2800

DEPTHS (m)

WATER DEPTH: 35.7 m

TOTAL DEPTH: 135.7 m

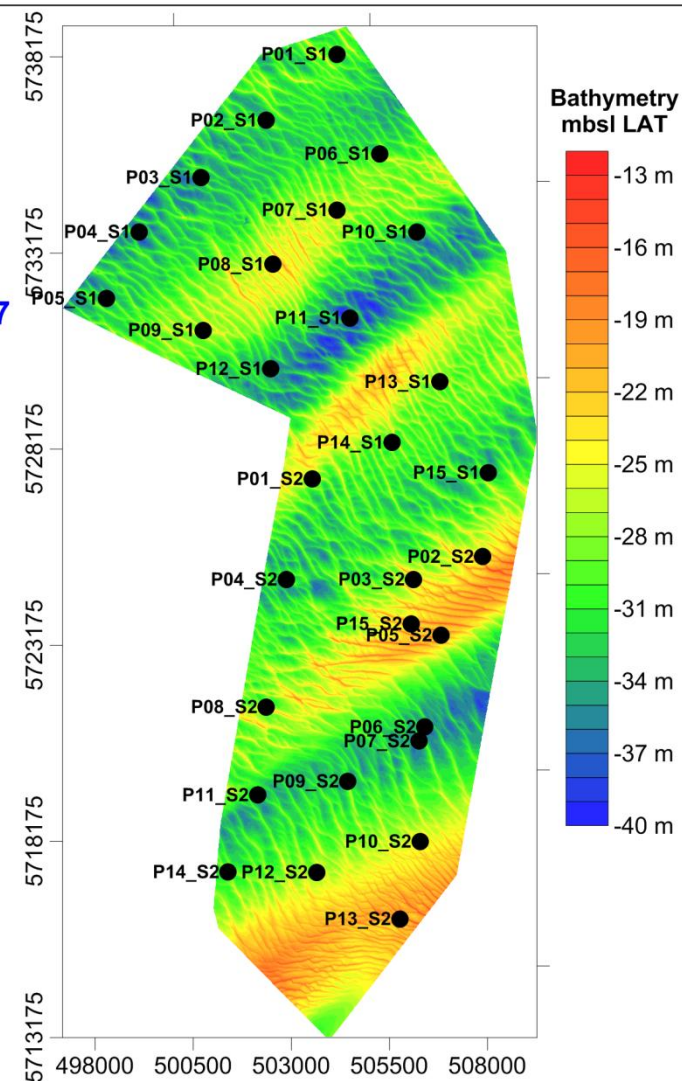
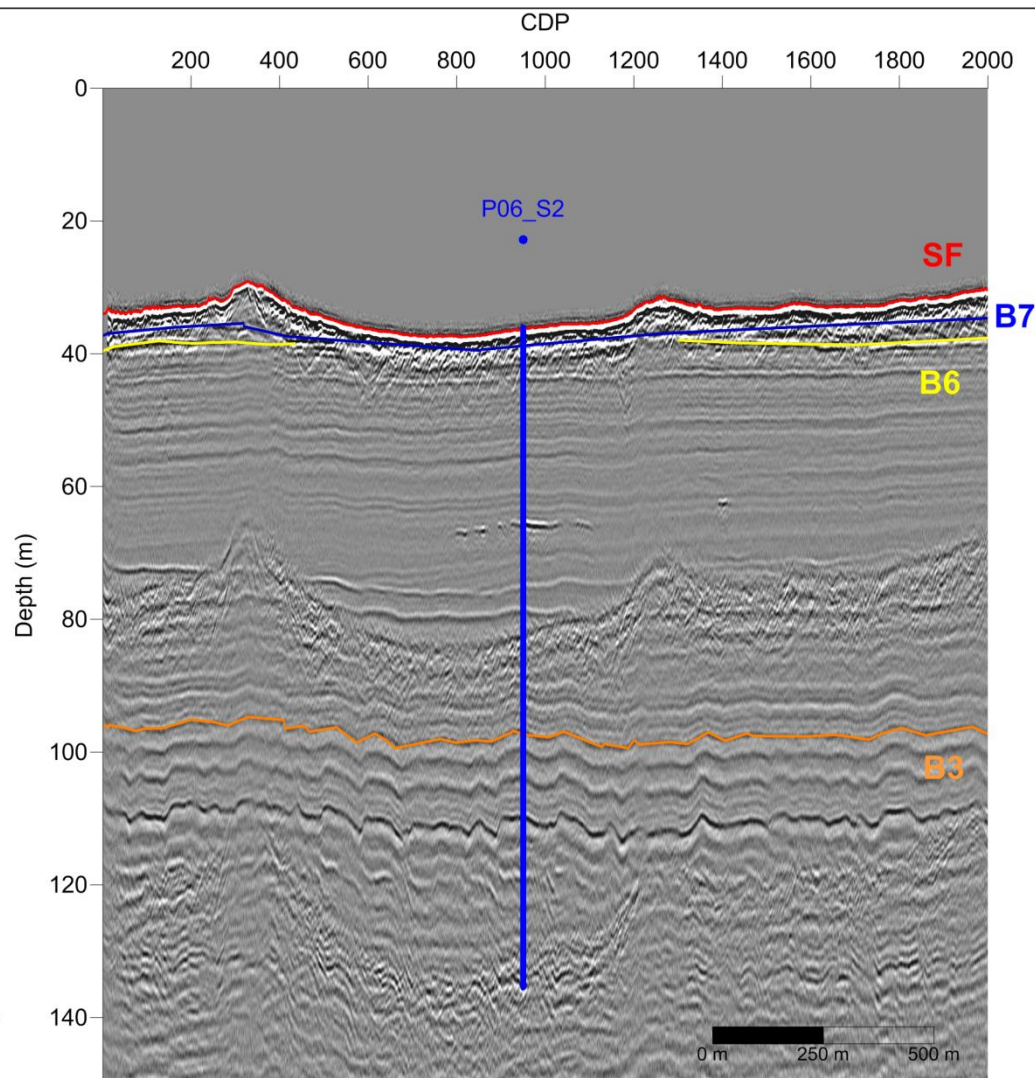
SCALE

Vertical

1 / 10

Horizontal

1 / 150



CONTRACTOR

SUBCONTRACTOR

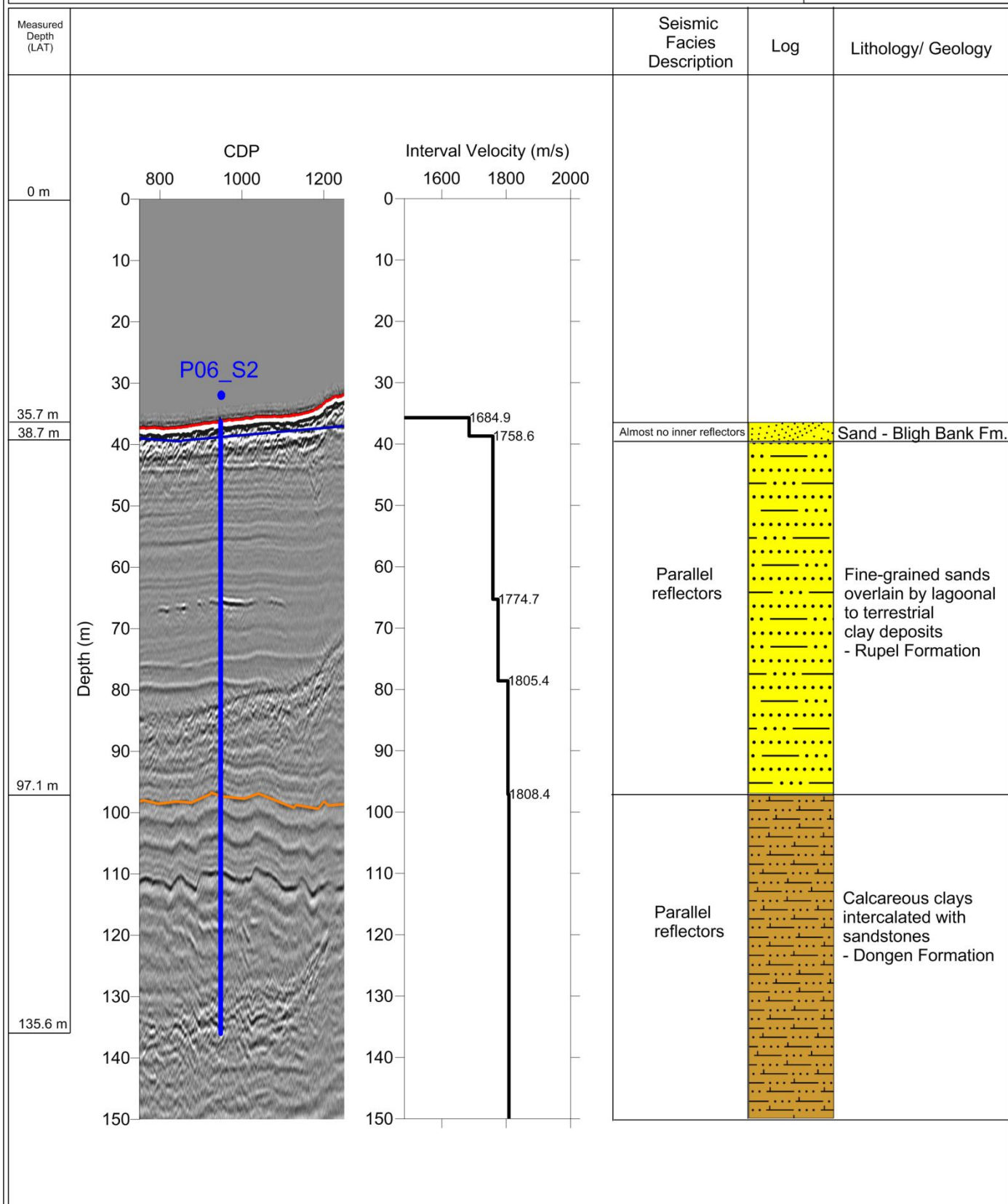


Borehole Plan P06_S2

Page 2: Prognosis

PROJECT: Borssele Wind Farm Geophysical Survey

SURFACE CO-ORDINATES
PROJECTED: UTM, Z31N, ETRS89 datum
NORTHING (meters): 5721092.62
EASTING (meters): 506404.14
SEISMIC LINE: x-inline2800
WATER DEPTH: 35.7 m
TOTAL DEPTH: 135.7 m
Vertical: 1 / 300
Horizontal: 1 / 20



CONTRACTOR

SUBCONTRACTOR



Borehole Plan P07_S2

Page 1: Overview

PROJECT: Borssele Wind Farm Geophysical Survey

SURFACE CO-ORDINATES

PROJECTED: UTM, Z31N, ETRS89 datum

NORTHING (meters): 5720733.08

EASTING (meters): 506251.59

SEISMIC LINE: 140-14000

DEPTHS (m)

WATER DEPTH: 33.68 m

TOTAL DEPTH: 133.68 m

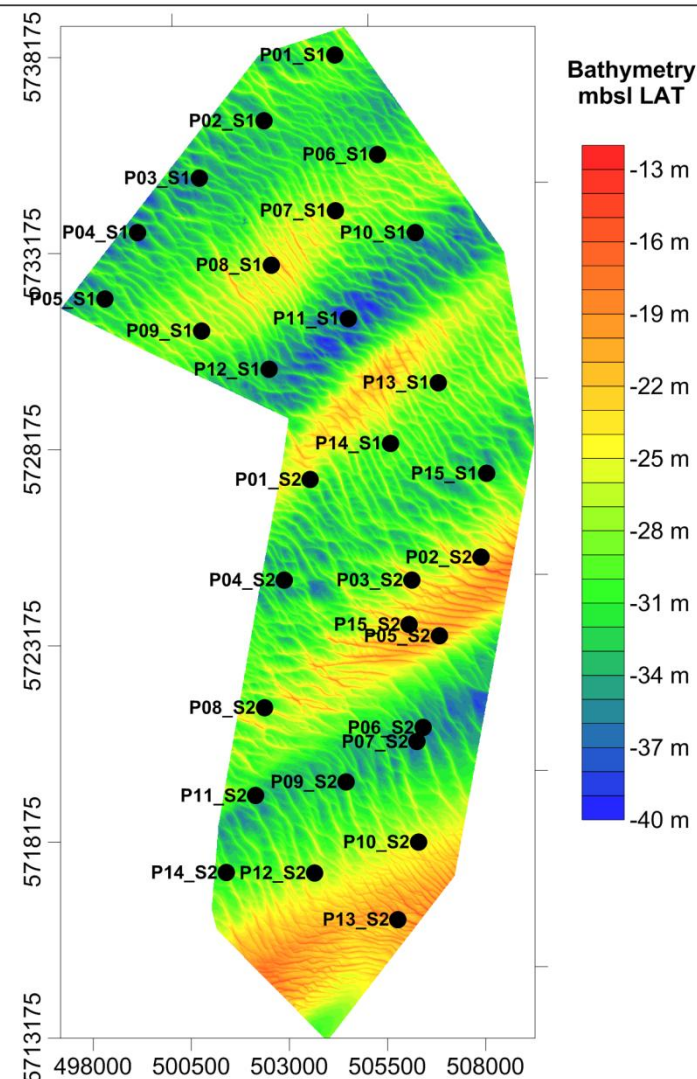
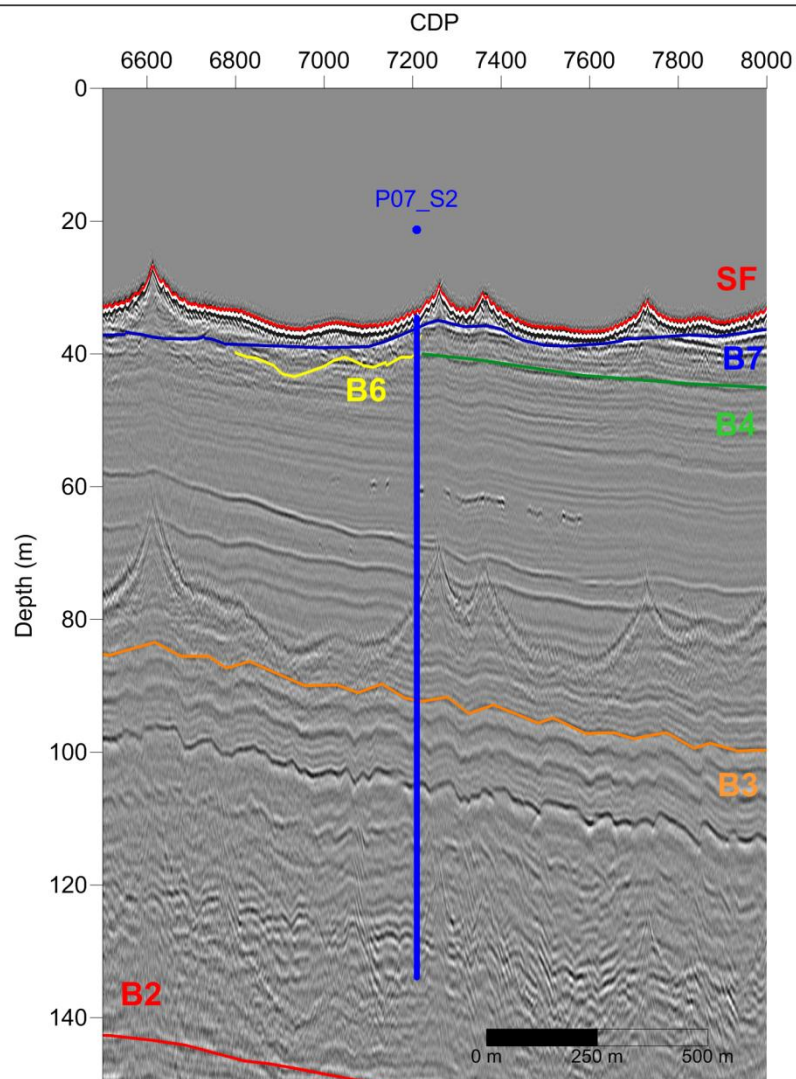
SCALE

Vertical

1 / 10

Horizontal

1 / 150



CONTRACTOR

SUBCONTRACTOR

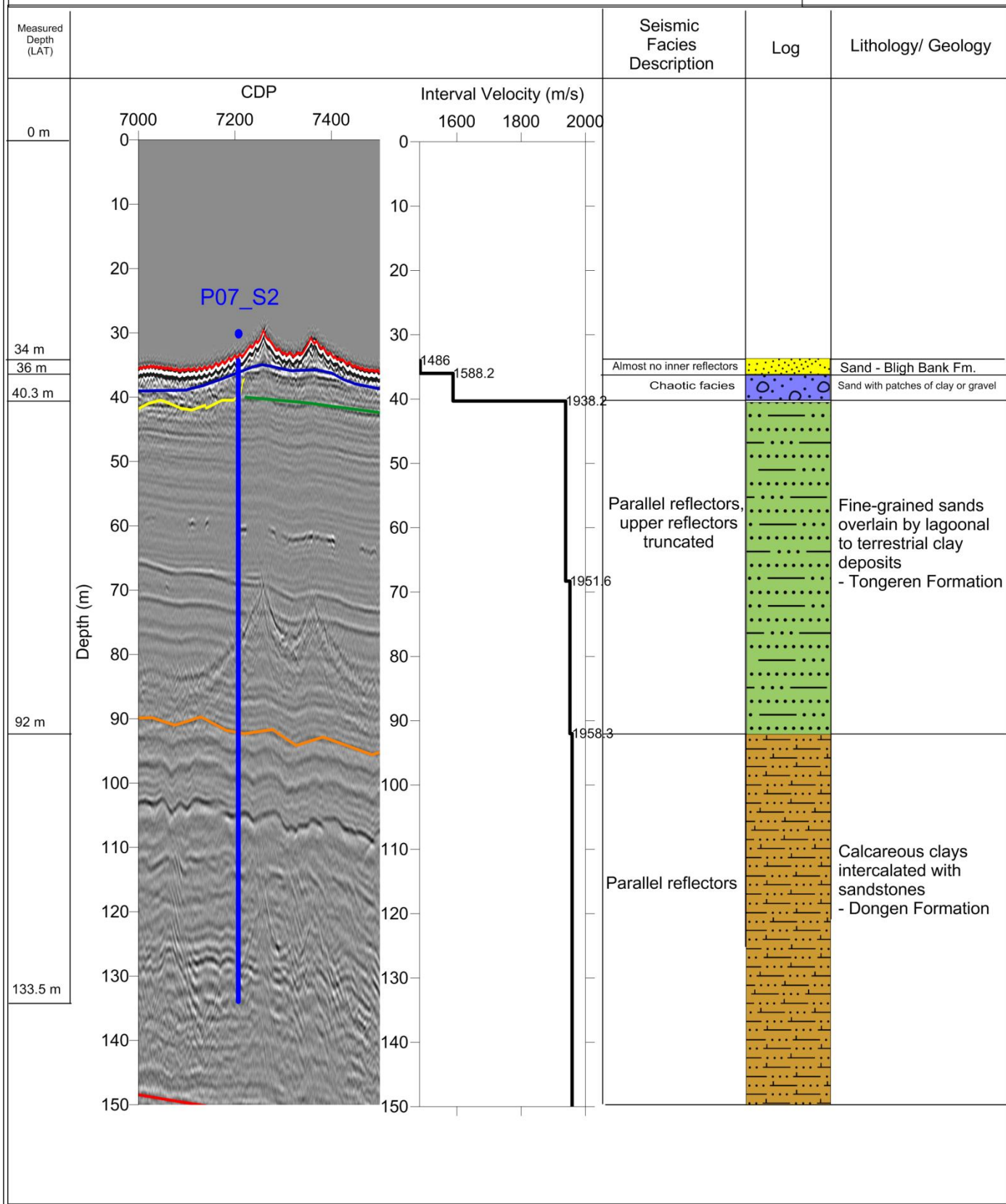


Borehole Plan P07_S2

Page 2: Prognosis

PROJECT: Borssele Wind Farm Geophysical Survey

SURFACE CO-ORDINATES
PROJECTED: UTM, Z31N, ETRS89 datum
NORTHING (meters): 5720733.08
EASTING (meters): 506251.59
SEISMIC LINE: 140-14000
WATER DEPTH: 33.68 m
TOTAL DEPTH: 133.68 m
Vertical: 1 / 7.5
Horizontal: 1 / 100



CONTRACTOR

SUBCONTRACTOR



Borehole Plan P08_S2

Page 1: Overview

PROJECT: Borssele Wind Farm Geophysical Survey

SURFACE CO-ORDINATES

PROJECTED: UTM, Z31N, ETRS89 datum

NORTHING (meters): 5721601.54

EASTING (meters): 502360.66

SEISMIC LINE: 104-10400

DEPTHS (m)

WATER DEPTH: 27.4 m

TOTAL DEPTH: 127.4 m

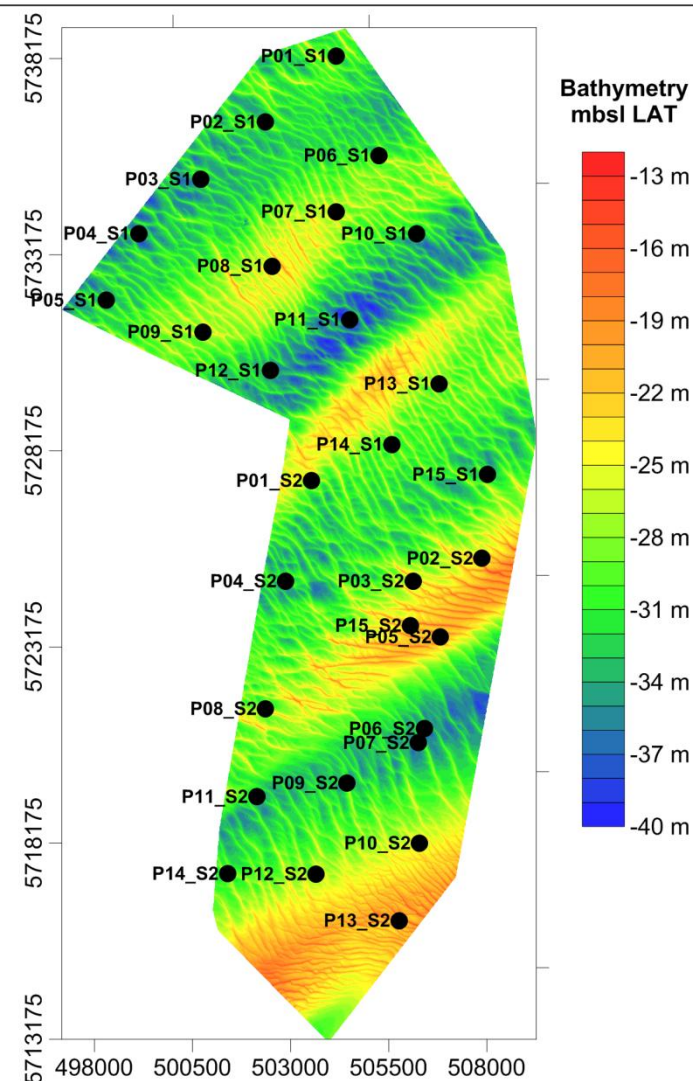
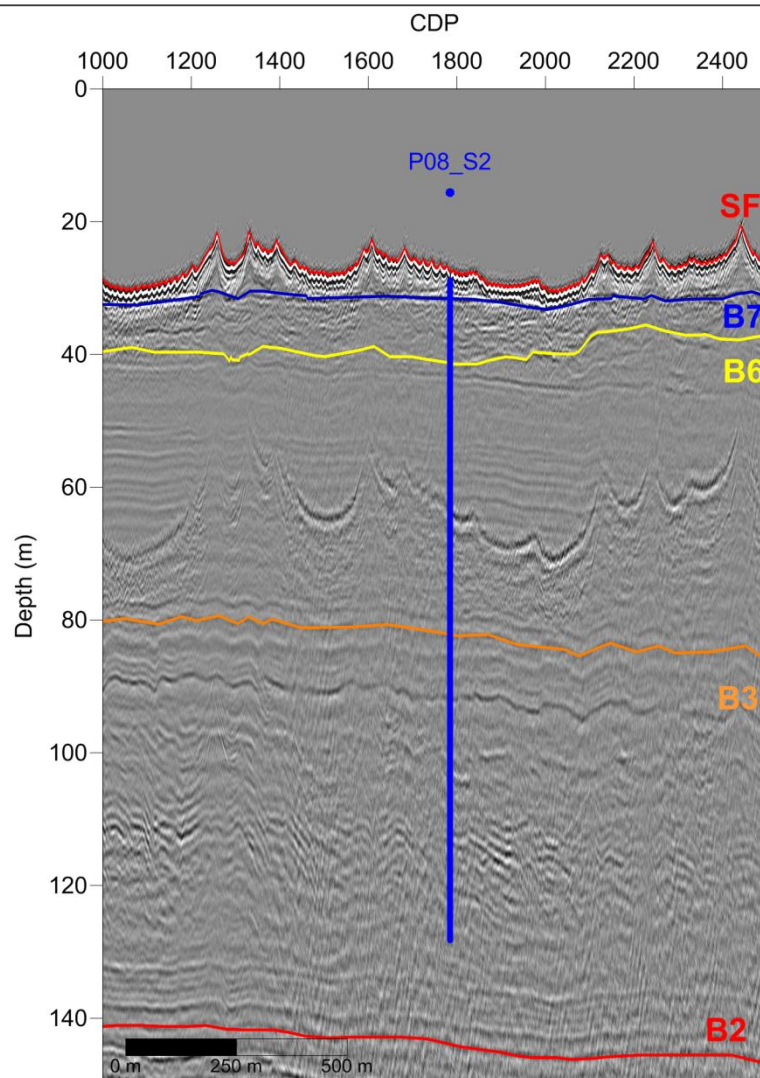
SCALE

Vertical

1 / 10

Horizontal

1 / 150



CONTRACTOR

SUBCONTRACTOR

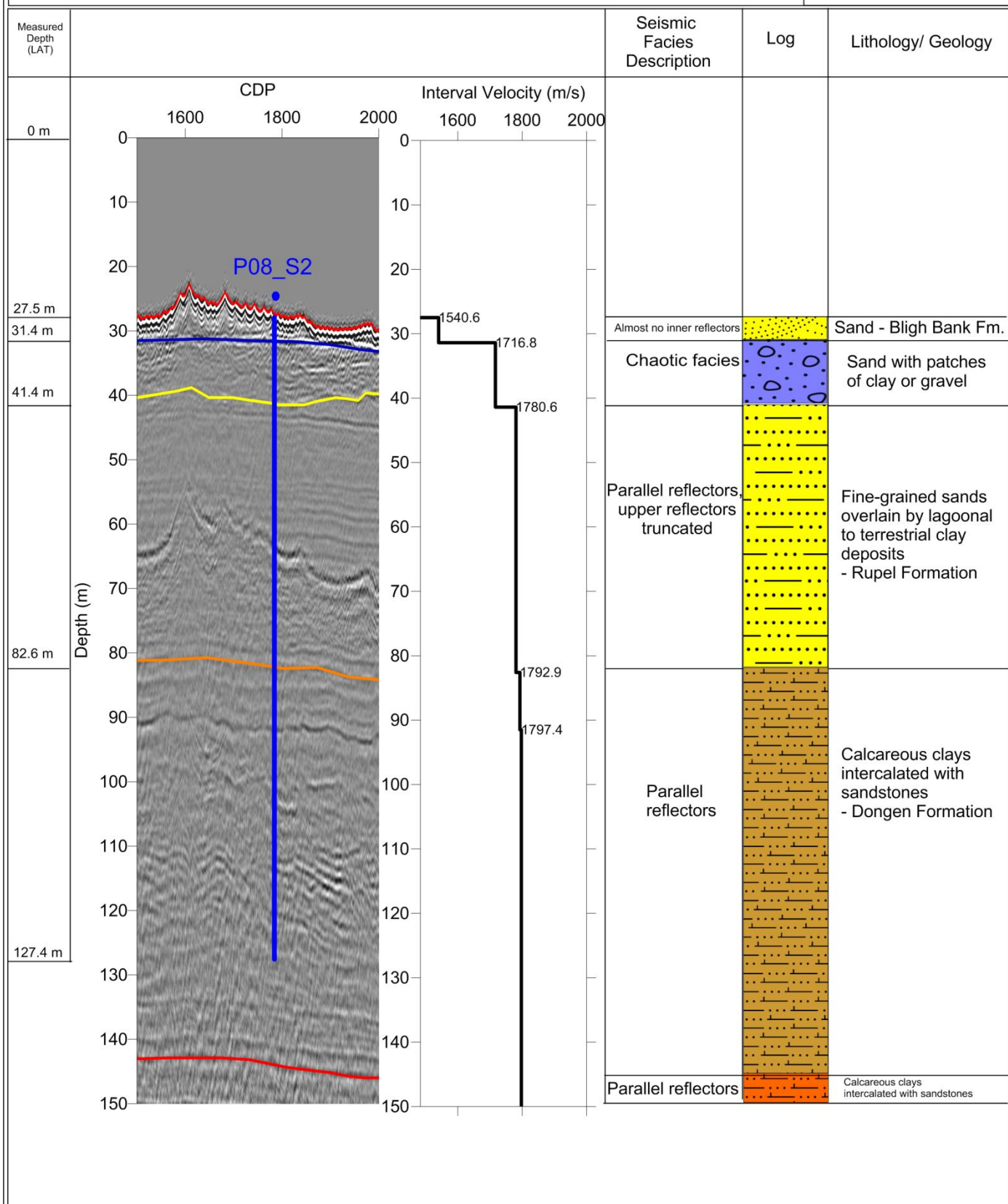


Borehole Plan P08_S2

Page 2: Prognosis

PROJECT: Borssele Wind Farm Geophysical Survey

SURFACE CO-ORDINATES
PROJECTED: UTM, Z31N, ETRS89 datum
NORTHING (meters): 5721601.54
EASTING (meters): 502360.66
SEISMIC LINE: 104-10400
DEPTHS (m)
WATER DEPTH: 27.4 m
TOTAL DEPTH: 127.4 m
SCALE
Vertical: 1 / 7.5
Horizontal: 1 / 100



CONTRACTOR

SUBCONTRACTOR



Borehole Plan P09_S2

Page 1: Overview

PROJECT: Borssele Wind Farm Geophysical Survey

SURFACE CO-ORDINATES

PROJECTED: UTM, Z31N, ETRS89 datum

NORTHING (meters): 5719708.61

EASTING (meters): 504437.96

SEISMIC LINE: 132-13200

DEPTHS (m)

WATER DEPTH: 29.0 m

TOTAL DEPTH: 129.0 m

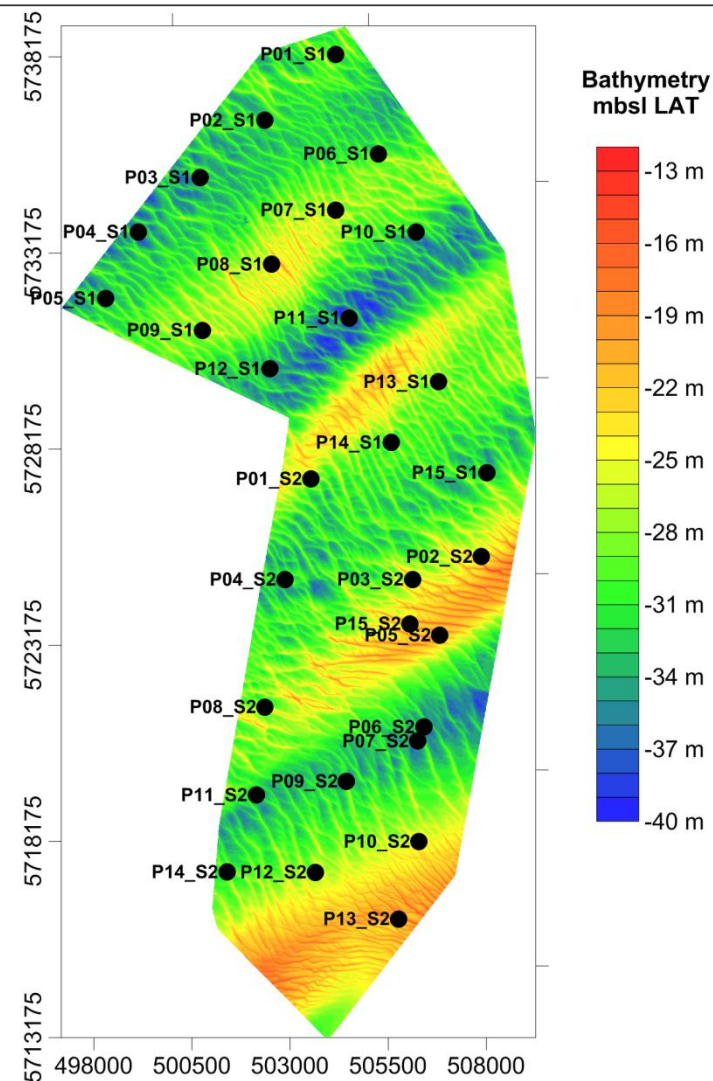
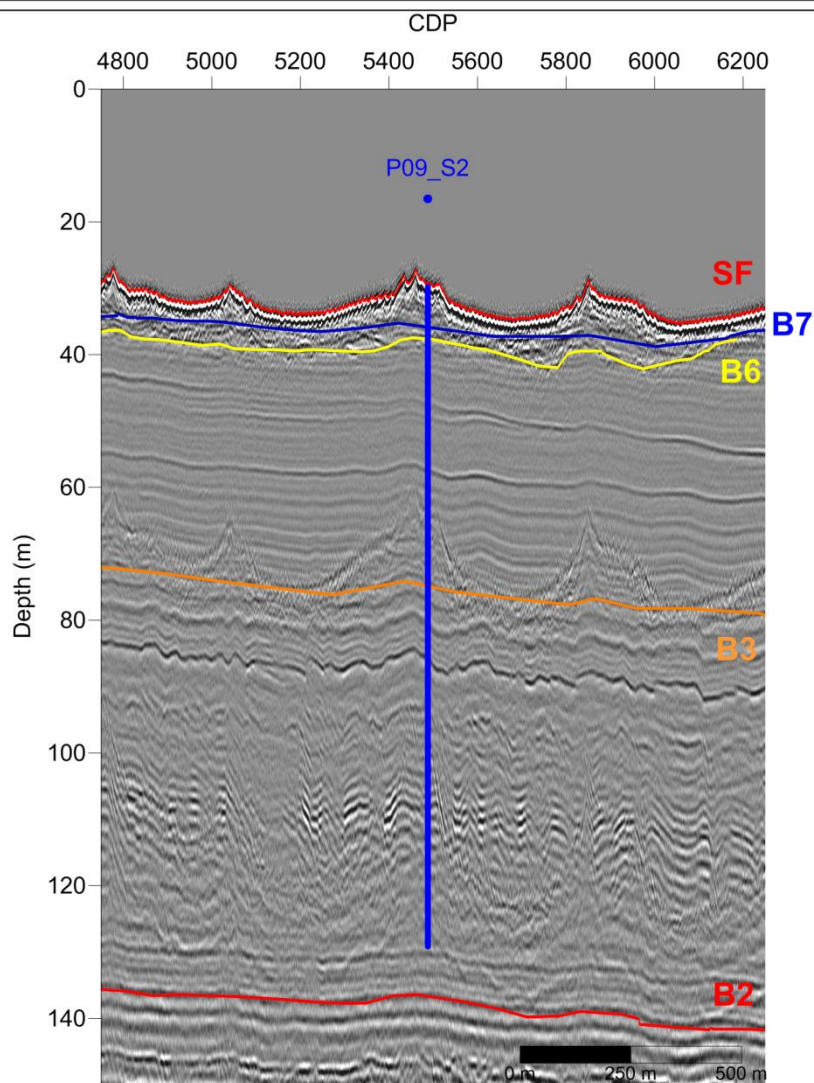
SCALE

Vertical

1 / 10

Horizontal

1 / 150



CONTRACTOR

SUBCONTRACTOR



Borehole Plan P09_S2

Page 2: Prognosis

PROJECT: Borssele Wind Farm Geophysical Survey

SURFACE CO-ORDINATES
PROJECTED: UTM, Z31N, ETRS89 datum

NORTHING (meters): 5719708.61

EASTING (meters): 504437.96

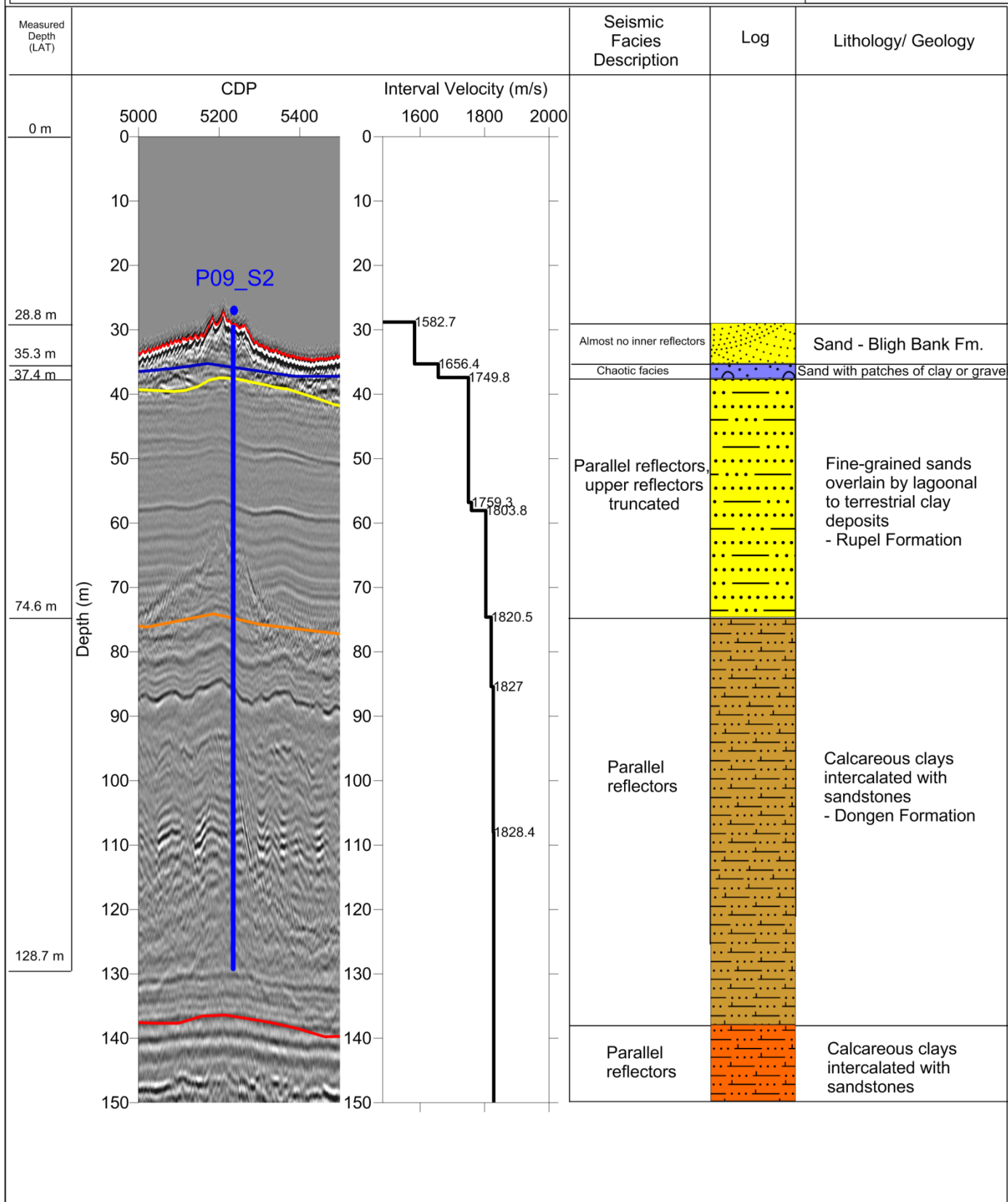
SEISMIC LINE: 156-15600

WATER DEPTH: 29 m

TOTAL DEPTH: 129 m

Vertical: 1 / 7.5

Horizontal: 1 / 120



CONTRACTOR

SUBCONTRACTOR



Borehole Plan P10_S2

Page 1: Overview

PROJECT: Borssele Wind Farm Geophysical Survey

SURFACE CO-ORDINATES

PROJECTED: UTM, Z31N, ETRS89 datum

NORTHING (meters): 5718174.87

EASTING (meters): 506284.38

SEISMIC LINE: 156-15600

DEPTHS (m)

WATER DEPTH: 26.0 m

TOTAL DEPTH: 126.0 m

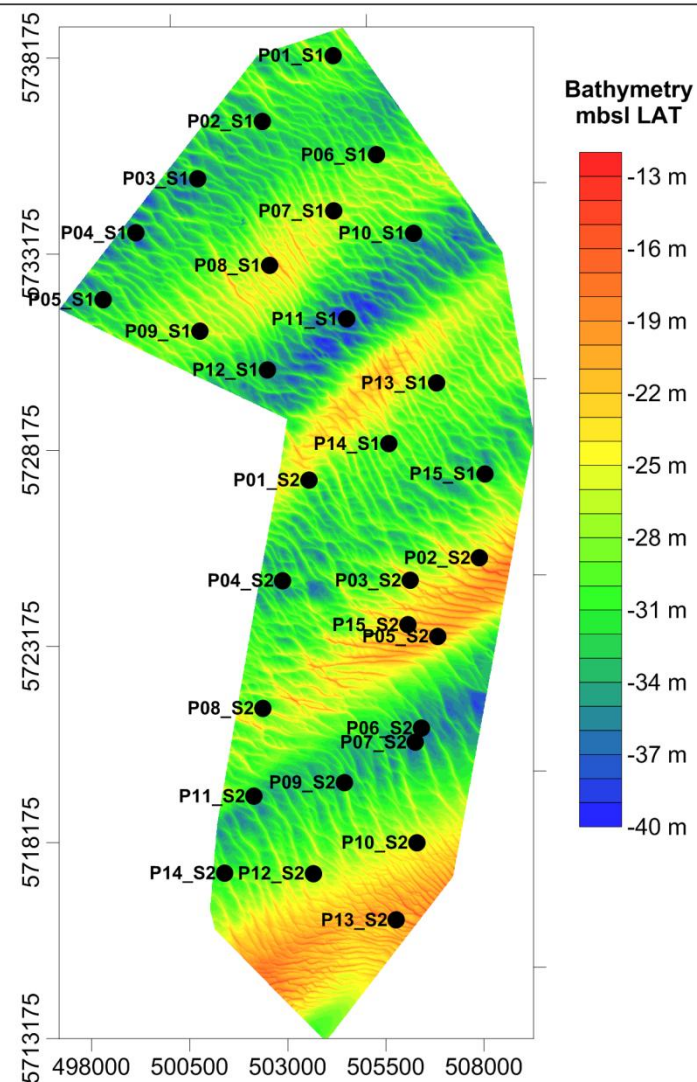
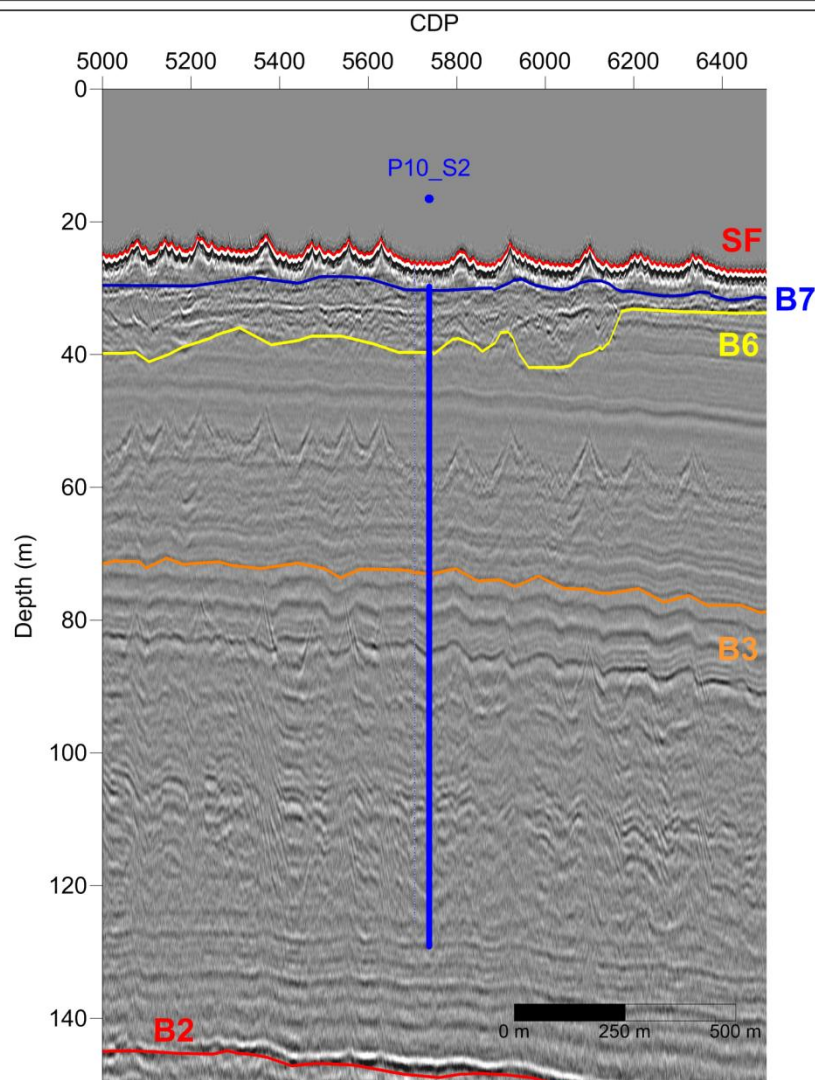
SCALE

Vertical

1 / 10

Horizontal

1 / 150



CONTRACTOR

SUBCONTRACTOR

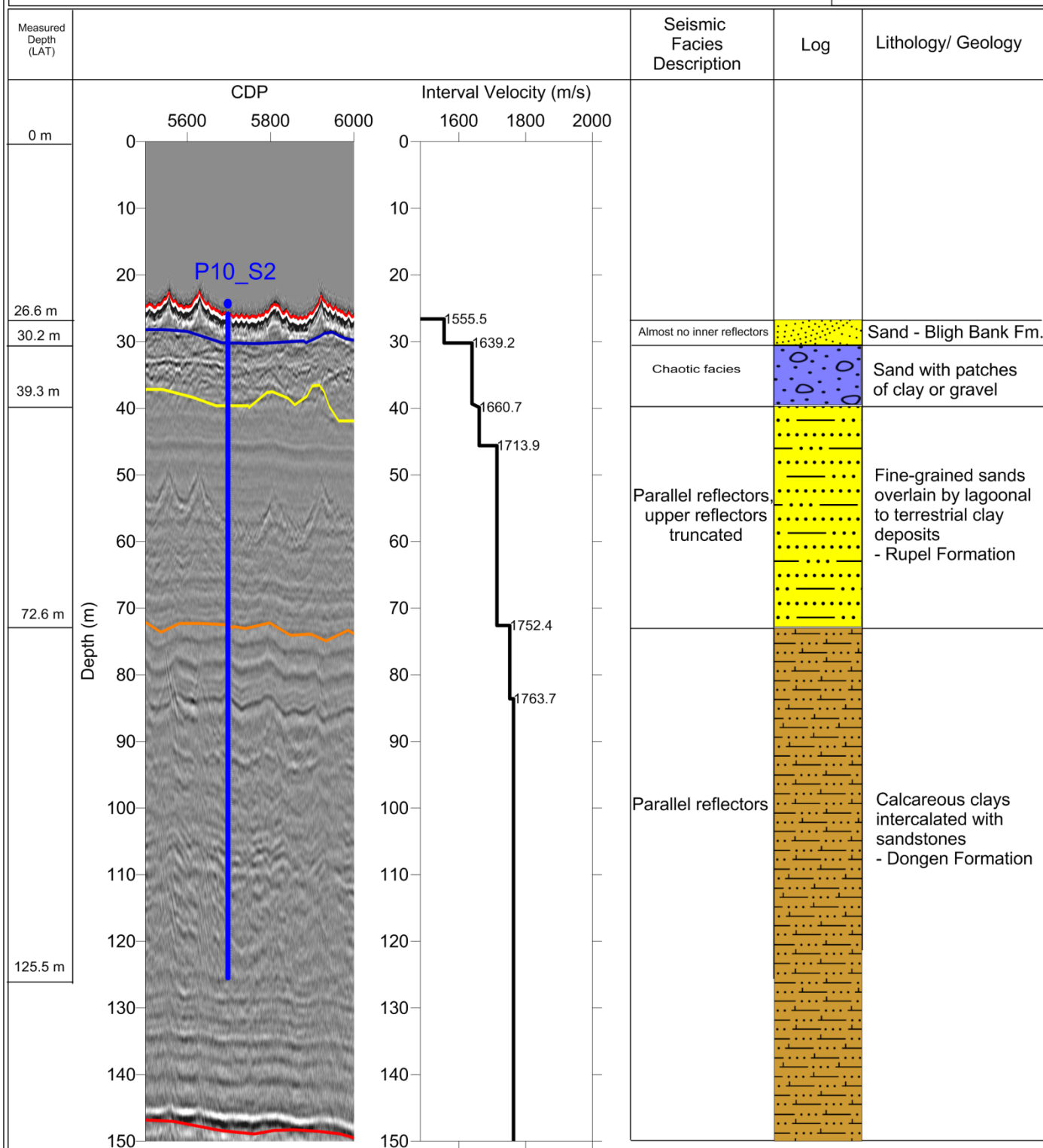


Borehole Plan P10_S2

Page 2: Prognosis

PROJECT: Borssele Wind Farm Geophysical Survey

SURFACE CO-ORDINATES
PROJECTED: UTM, Z31N, ETRS89 datum
NORTHING (meters): 5718174.87
EASTING (meters): 506284.38
SEISMIC LINE: 156-15600
WATER DEPTH: 26 m
TOTAL DEPTH: 126 m
Vertical: 1 / 7.5
Horizontal: 1 / 120



CONTRACTOR

SUBCONTRACTOR



Borehole Plan P11_S2

Page 1: Overview

PROJECT: Borssele Wind Farm Geophysical Survey

SURFACE CO-ORDINATES

PROJECTED: UTM, Z31N, ETRS89 datum

NORTHING (meters): 5719358.09

EASTING (meters): 502137.75

SEISMIC LINE: 116-11600

DEPTHS (m)

WATER DEPTH: 32.5 m

TOTAL DEPTH: 132.5 m

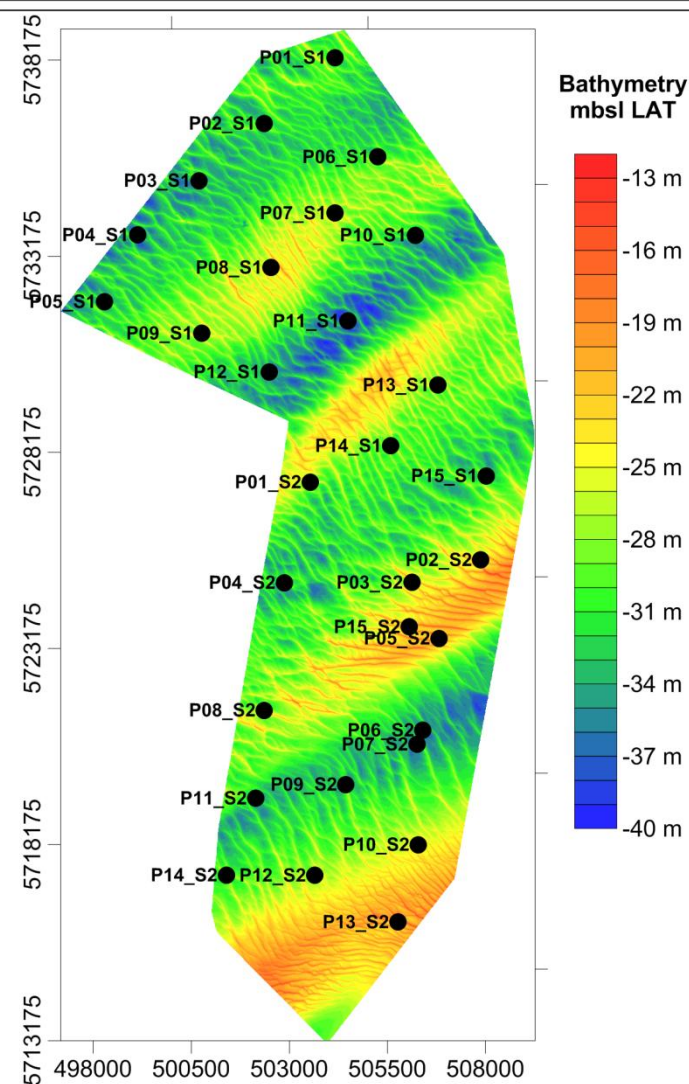
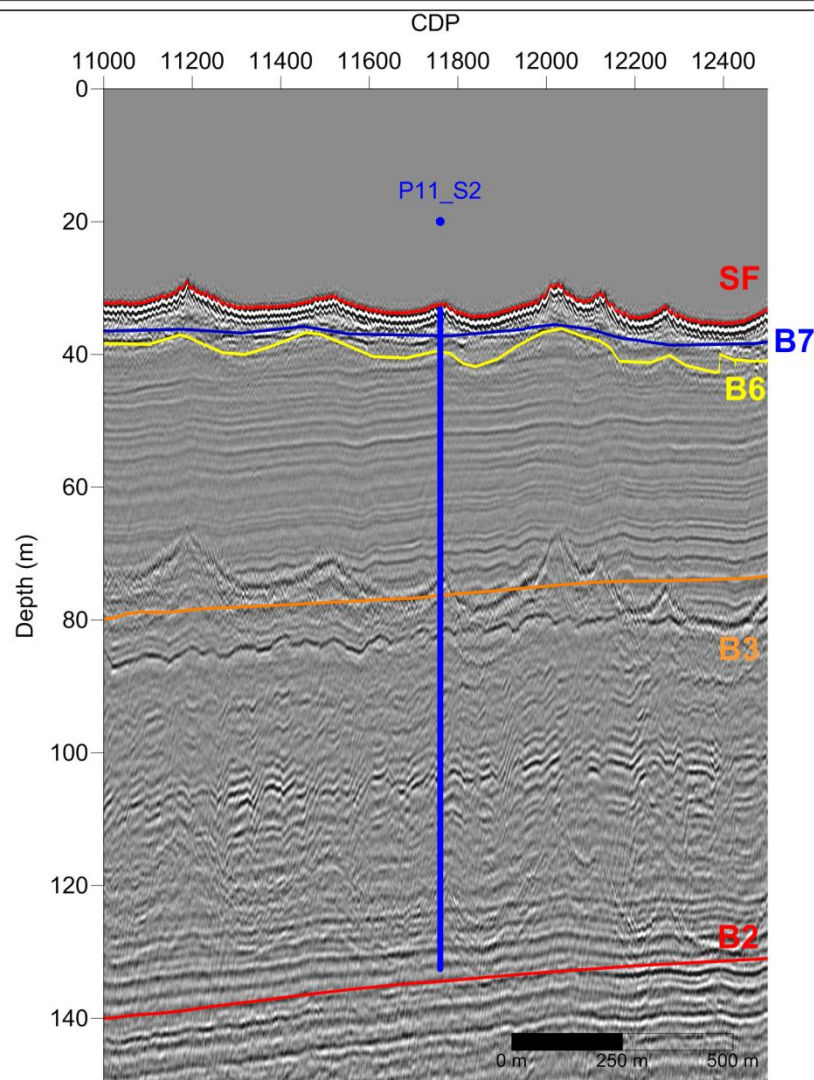
SCALE

Vertical

1 / 10

Horizontal

1 / 150



CONTRACTOR

SUBCONTRACTOR

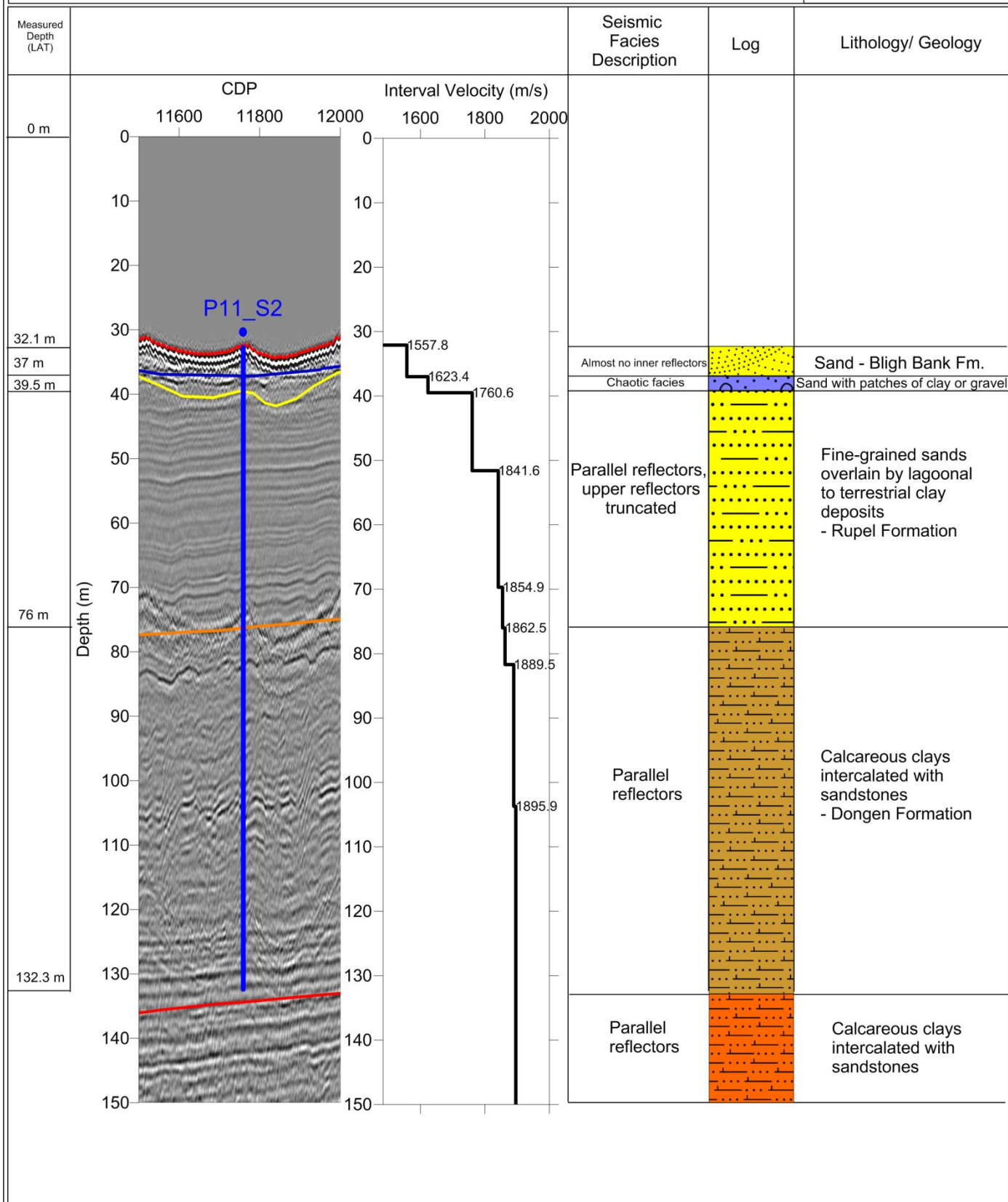


Borehole Plan P11_S2

Page 2: Prognosis

PROJECT: Borssele Wind Farm Geophysical Survey

SURFACE CO-ORDINATES
PROJECTED: UTM, Z31N, ETRS89 datum
NORTHING (meters): 5719358.09
EASTING (meters): 502137.75
SEISMIC LINE: 116-11600
WATER DEPTH: 32.5 m
TOTAL DEPTH: 132.5 m
Vertical: 1 / 7.5
Horizontal: 1 / 100



CONTRACTOR

SUBCONTRACTOR



Borehole Plan P12_S2

Page 1: Overview

PROJECT: Borssele Wind Farm Geophysical Survey

SURFACE CO-ORDINATES

PROJECTED: UTM, Z31N, ETRS89 datum

NORTHING (meters): 5717388.09

EASTING (meters): 503645.33

SEISMIC LINE: 140-14000

DEPTHS (m)

WATER DEPTH: 27.2 m

TOTAL DEPTH: 127.20 m

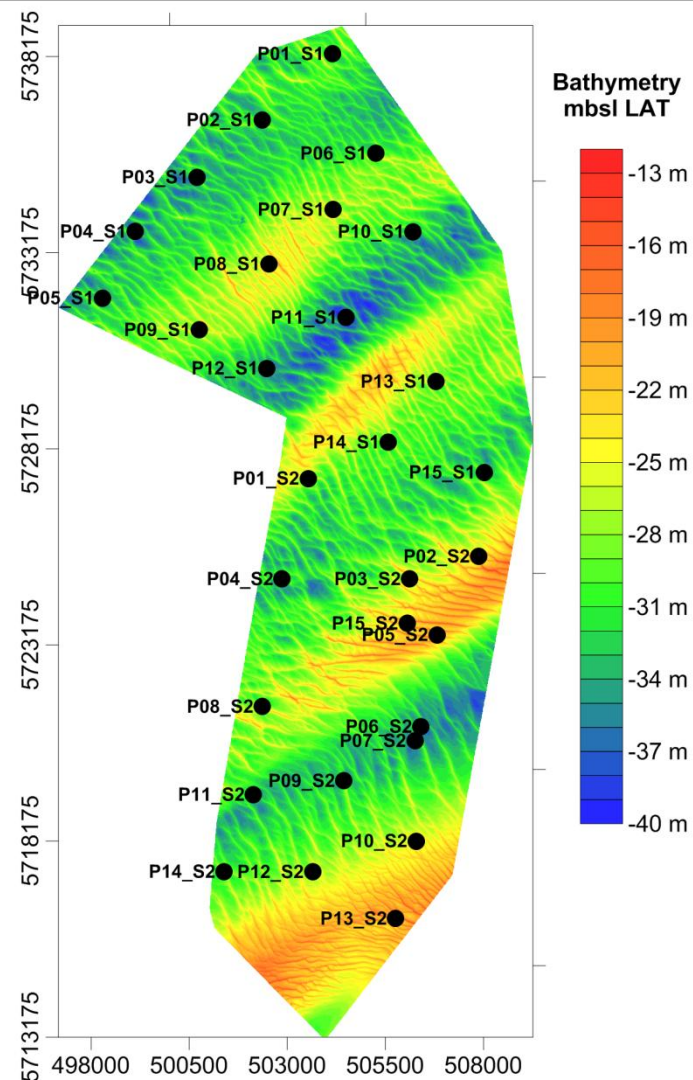
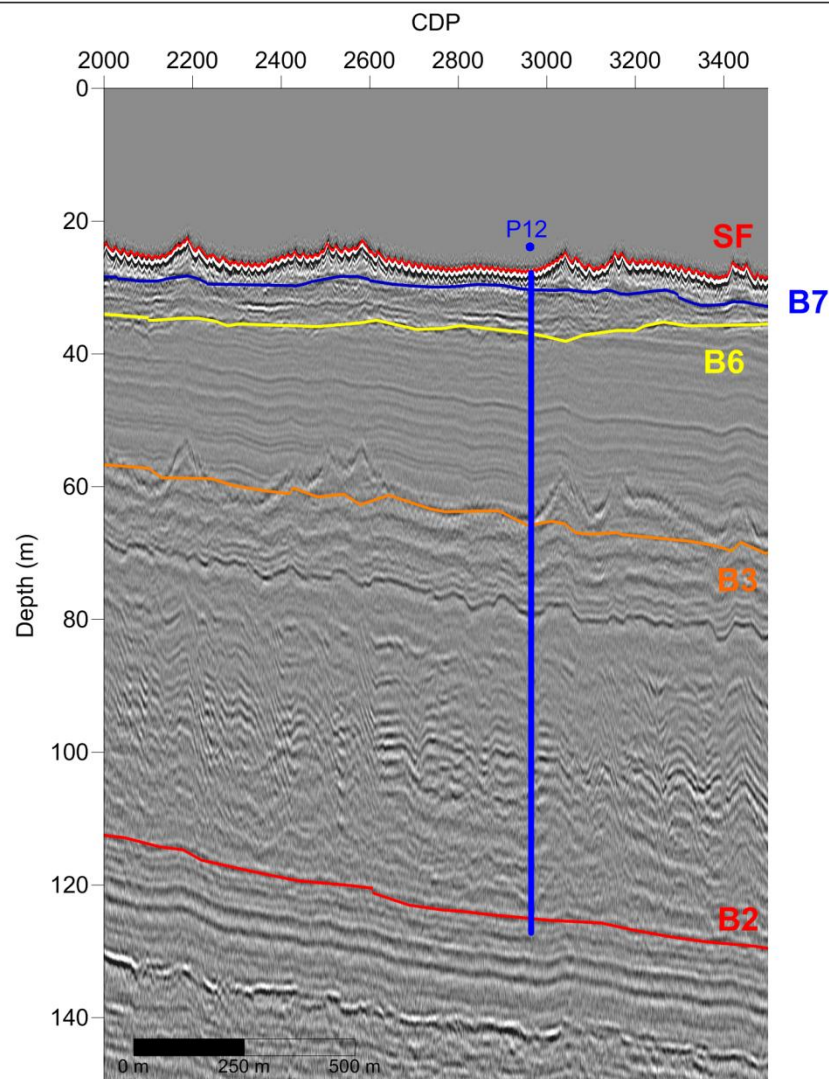
SCALE

Vertical

1 / 10

Horizontal

1 / 150



CONTRACTOR

SUBCONTRACTOR

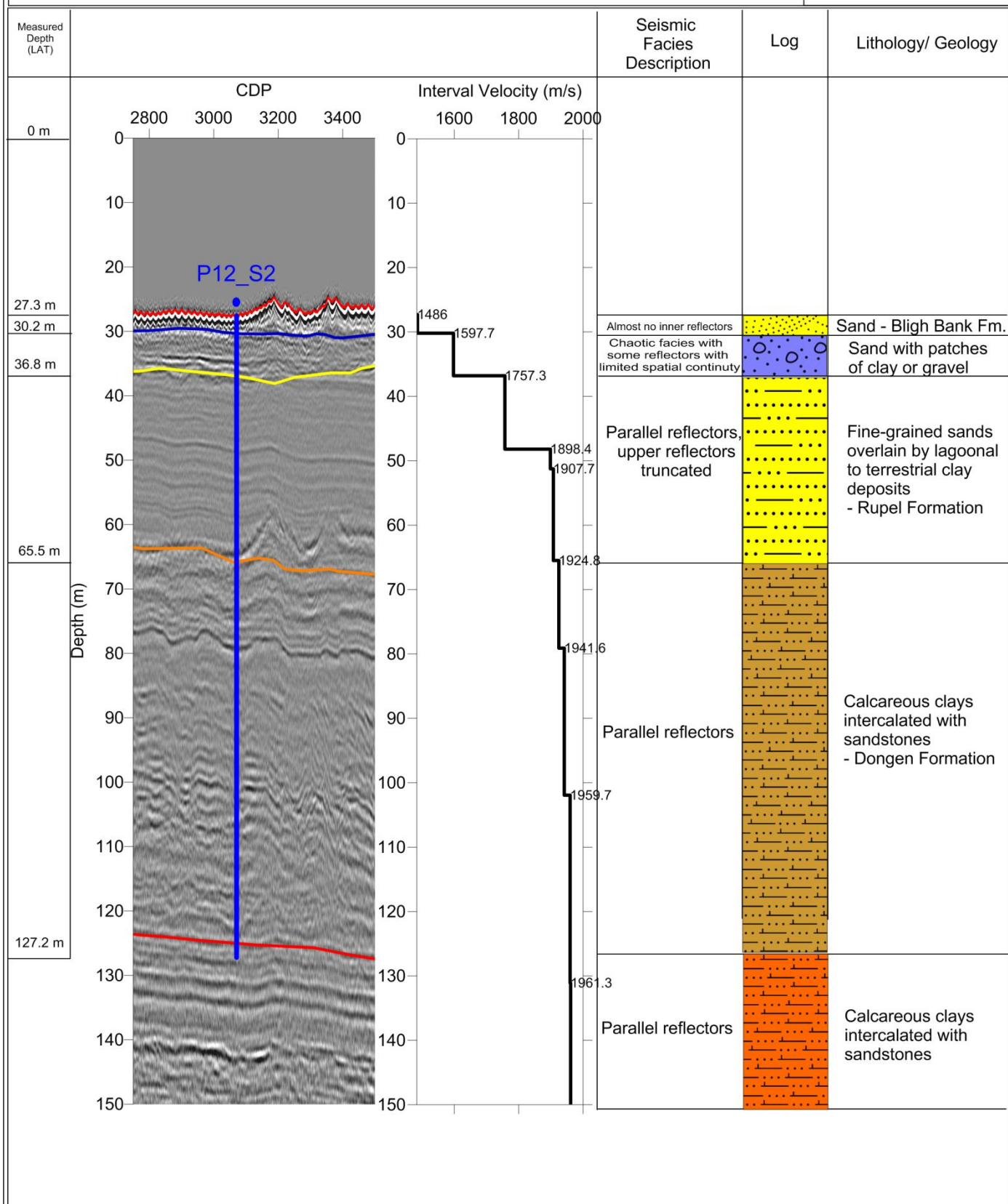


Borehole Plan P12_S2

Page 2: Prognosis

PROJECT: Borssele Wind Farm Geophysical Survey

SURFACE CO-ORDINATES
PROJECTED: UTM, Z31N, ETRS89 datum
NORTHING (meters): 5717388.09
EASTING (meters): 503645.33
SEISMIC LINE: 140-14000
WATER DEPTH: 27.2 m
TOTAL DEPTH: 127.2 m
Vertical: 1 / 7.5
Horizontal: 1 / 150



CONTRACTOR

SUBCONTRACTOR



Borehole Plan P13_S2

Page 1: Overview

PROJECT: Borssele Wind Farm Geophysical Survey

SURFACE CO-ORDINATES

PROJECTED: UTM, Z31N, ETRS89 datum

NORTHING (meters): 5716198.96

EASTING (meters): 505763.70

SEISMIC LINE: 164-16400

DEPTHS (m)

WATER DEPTH: 21.0 m

TOTAL DEPTH: 121.00 m

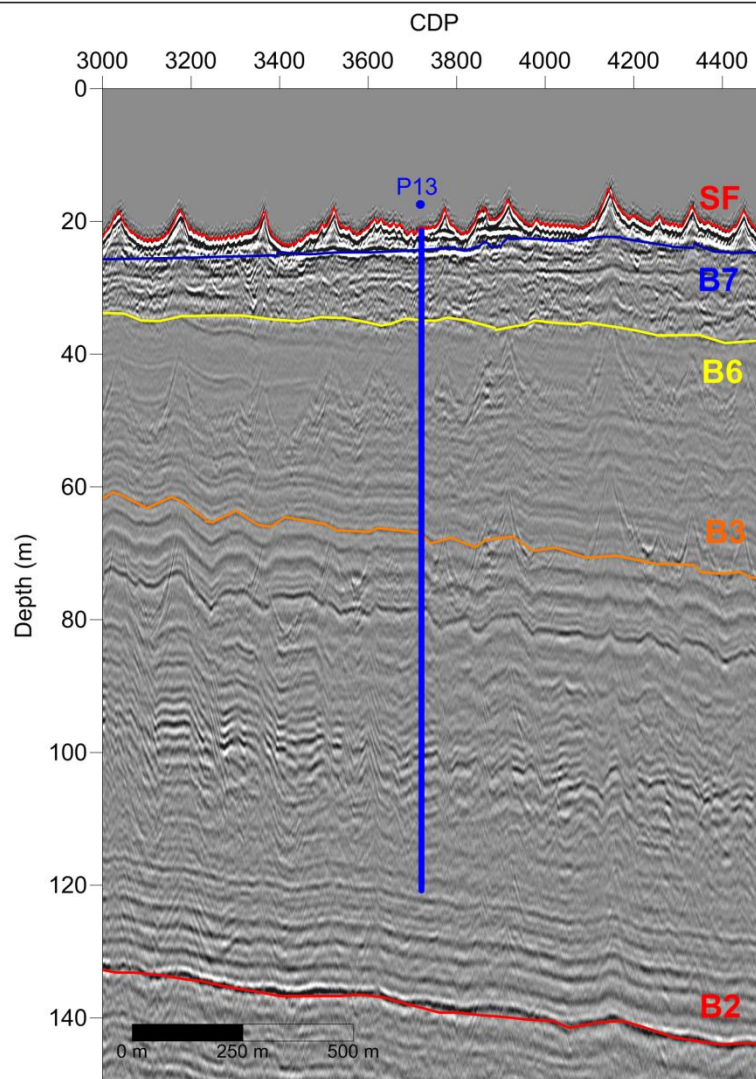
SCALE

Vertical

1 / 10

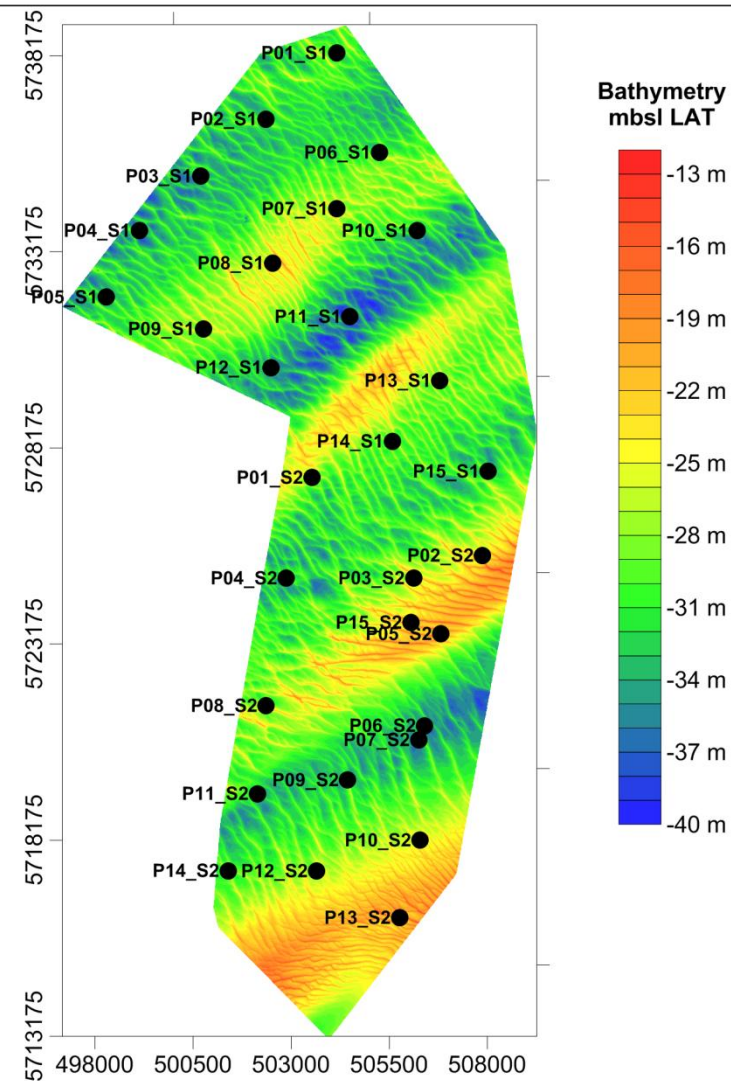
Horizontal

1 / 150



Line - 164-16400

B# represents the interpreted horizons in seismic sections.



CONTRACTOR

SUBCONTRACTOR

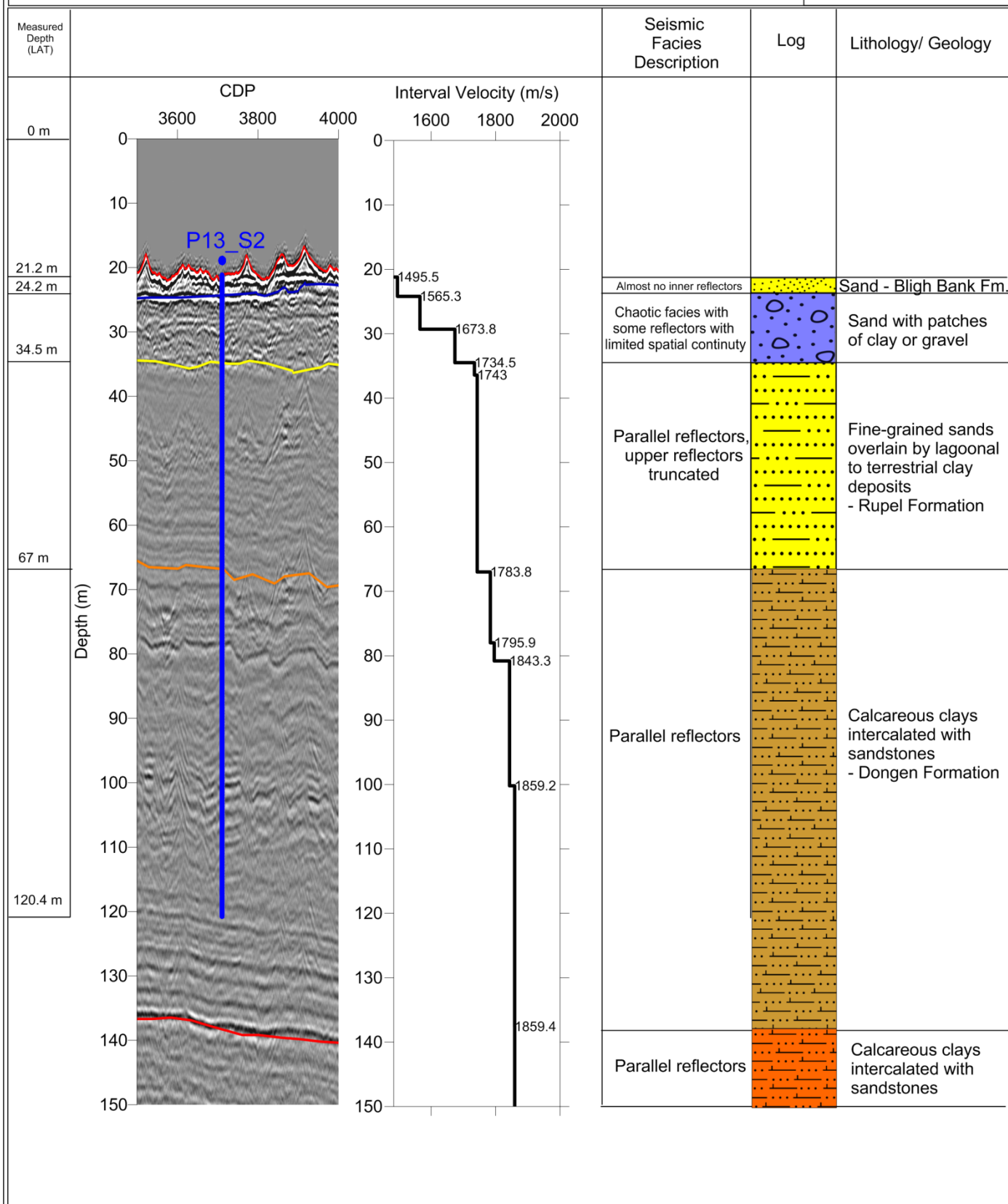


Borehole Plan P13_S2

Page 2: Prognosis

PROJECT: Borssele Wind Farm Geophysical Survey

SURFACE CO-ORDINATES
PROJECTED: UTM, Z31N, ETRS89 datum
NORTHING (meters): 5716198.96
EASTING (meters): 505763.70
SEISMIC LINE: 164-16400
WATER DEPTH: 21 m
TOTAL DEPTH: 121 m
Vertical: 1 / 7.5
Horizontal: 1 / 120



CONTRACTOR SUBCONTRACTOR



Borehole Plan P14_S2

Page 1: Overview

PROJECT: Borssele Wind Farm Geophysical Survey

SURFACE CO-ORDINATES

PROJECTED: UTM, Z31N, ETRS89 datum

NORTHING (meters): 5717396.00

EASTING (meters): 501389.39

SEISMIC LINE: x-in8800

DEPTHS (m)

WATER DEPTH: 29.3 m

TOTAL DEPTH: 129.3 m

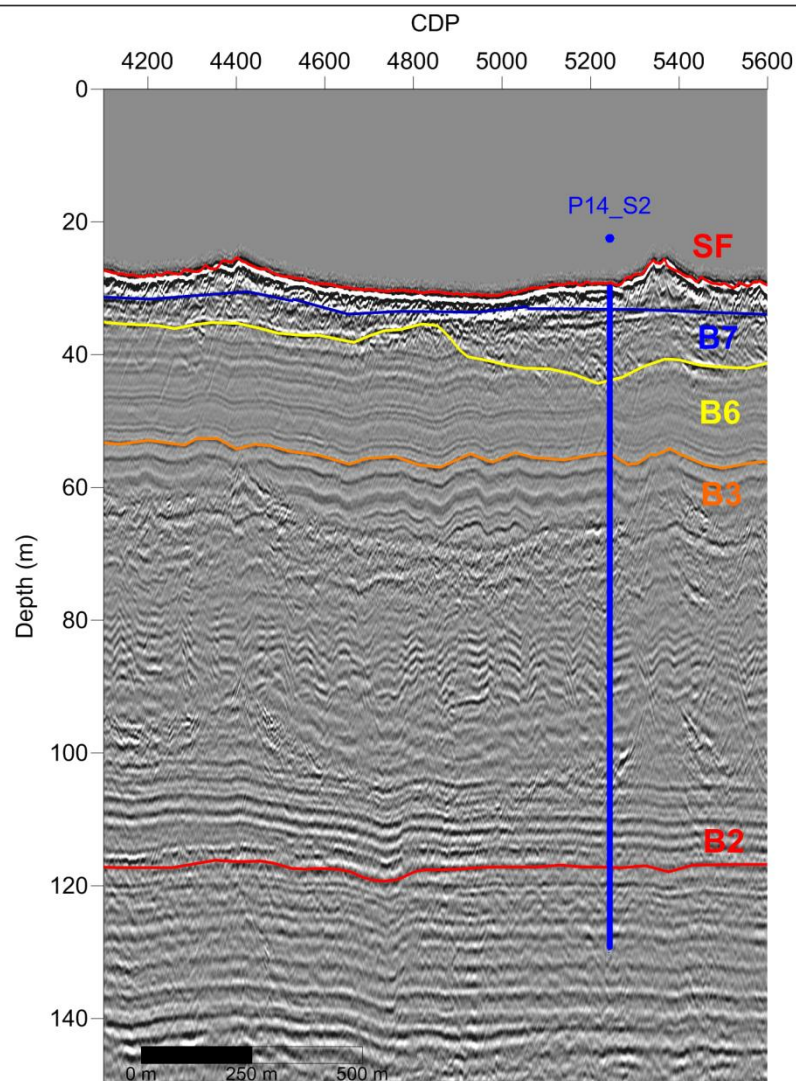
SCALE

Vertical

1 / 10

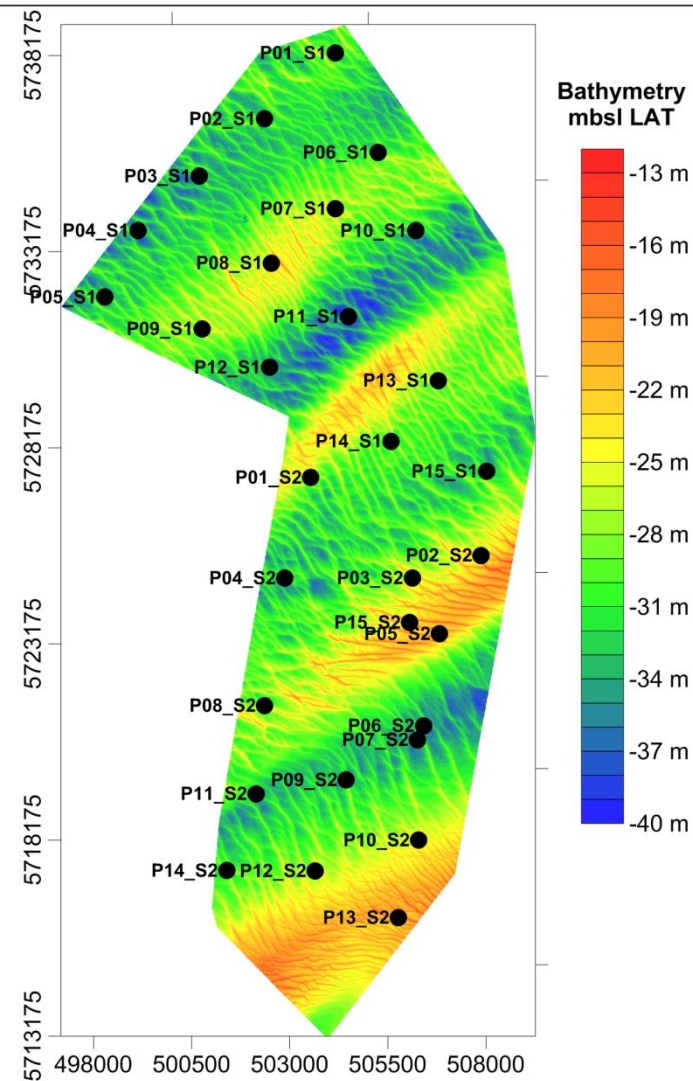
Horizontal

1 / 150



Line - x-in8800

B# represents the interpreted horizons in seismic sections.



CONTRACTOR

SUBCONTRACTOR

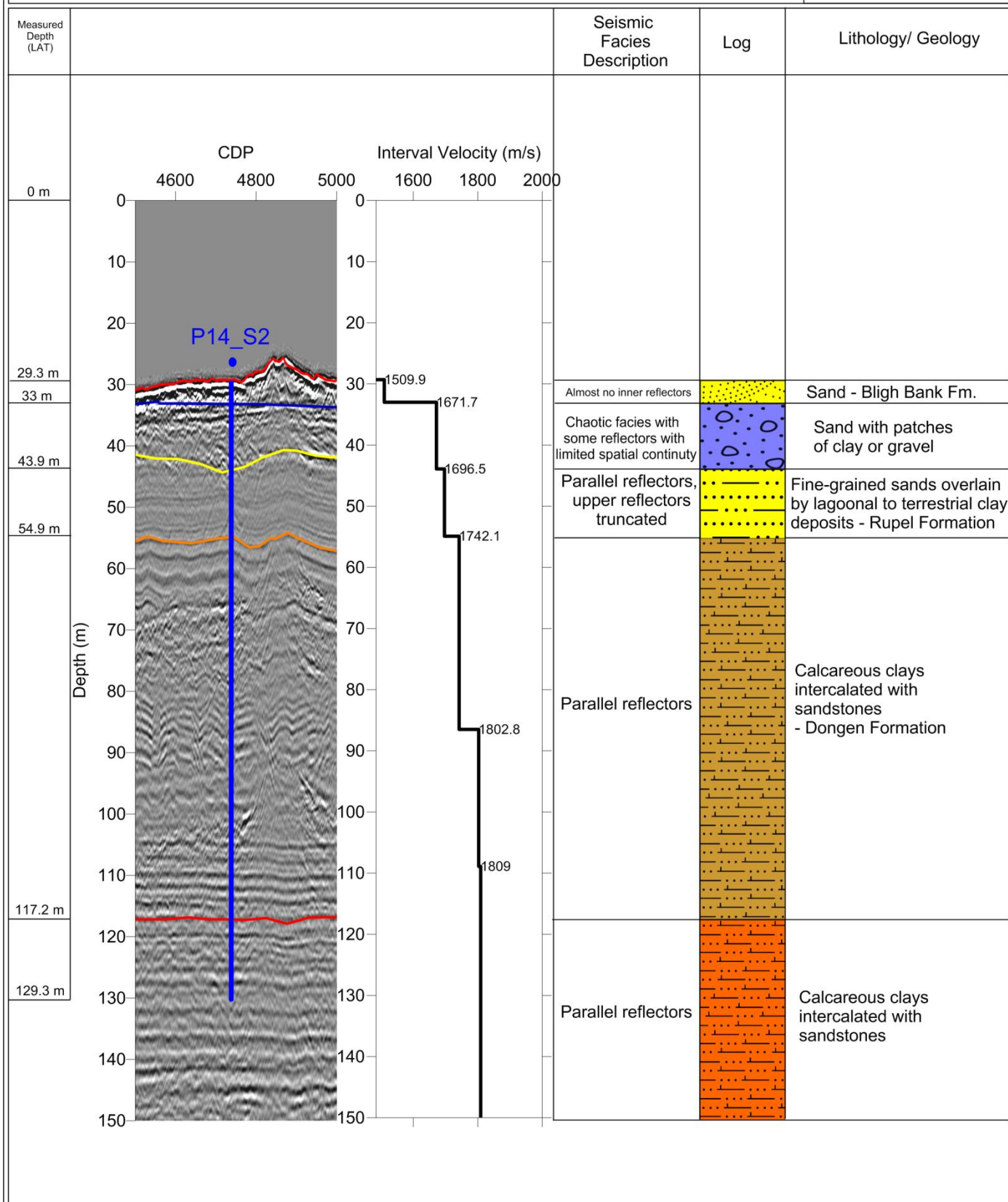


Borehole Plan P14_S2

Page 2: Prognosis

PROJECT: Borssele Wind Farm Geophysical Survey

SURFACE CO-ORDINATES
PROJECTED: UTM, Z31N, ETRS89 datum
NORTHING (meters): 5717396.00
EASTING (meters): 501389.39
SEISMIC LINE: x-inline8800
WATER DEPTH: 29.3 m
TOTAL DEPTH: 129.3 m
Vertical: 1 / 300
Horizontal: 1 / 20



CONTRACTOR

SUBCONTRACTOR



Borehole Plan P15_S2

Page 1: Overview

PROJECT: Borssele Wind Farm Geophysical Survey

SURFACE CO-ORDINATES

PROJECTED: UTM, Z31N, ETRS89 datum

NORTHING (meters): 5723723.44

EASTING (meters): 506052.08

SEISMIC LINE: 120-12000

DEPTHS (m)

WATER DEPTH: 23.4 m

TOTAL DEPTH: 123.4 m

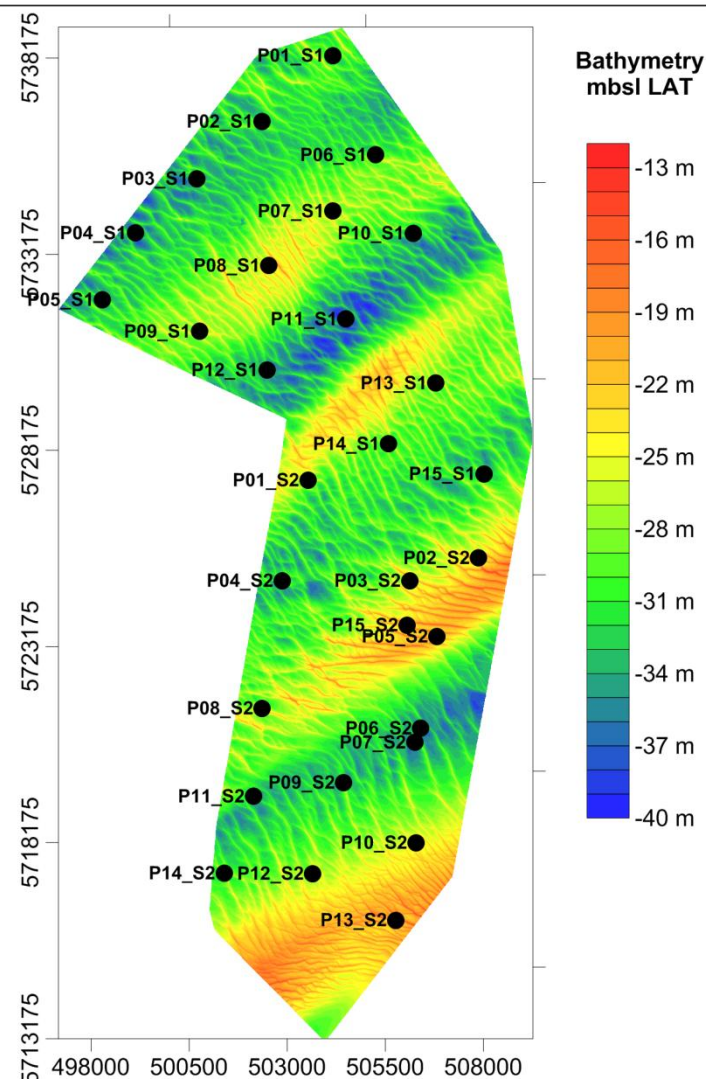
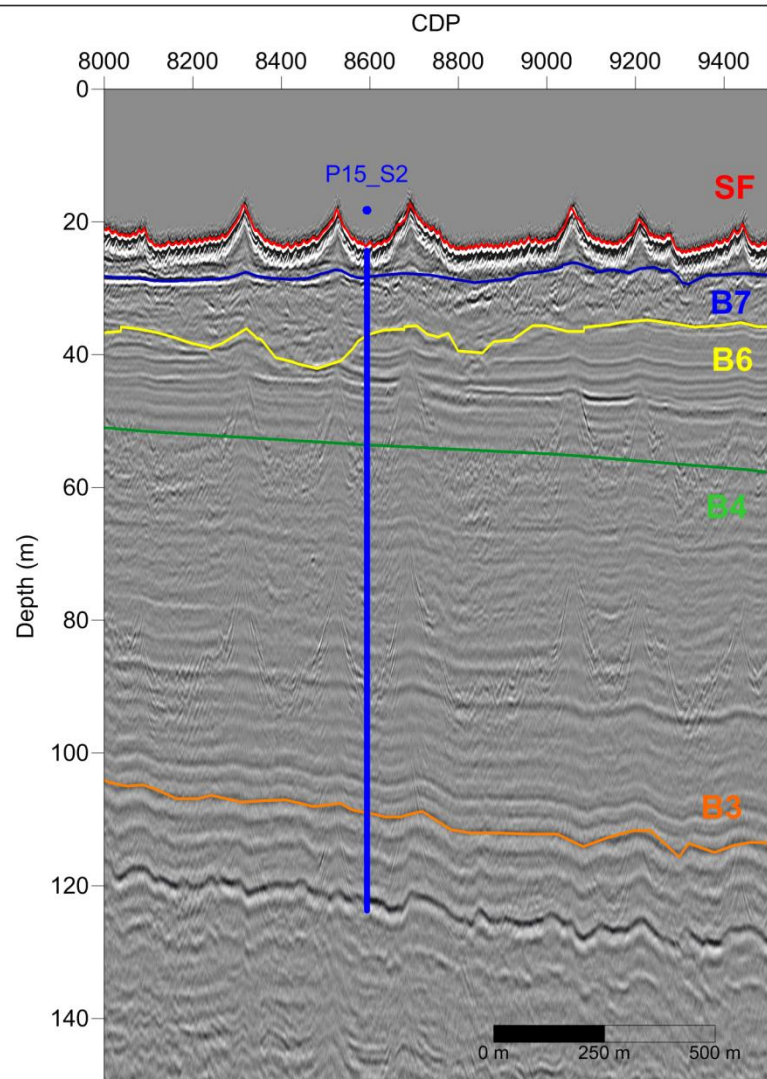
SCALE

Vertical

1 / 10

Horizontal

1 / 150



CONTRACTOR

SUBCONTRACTOR

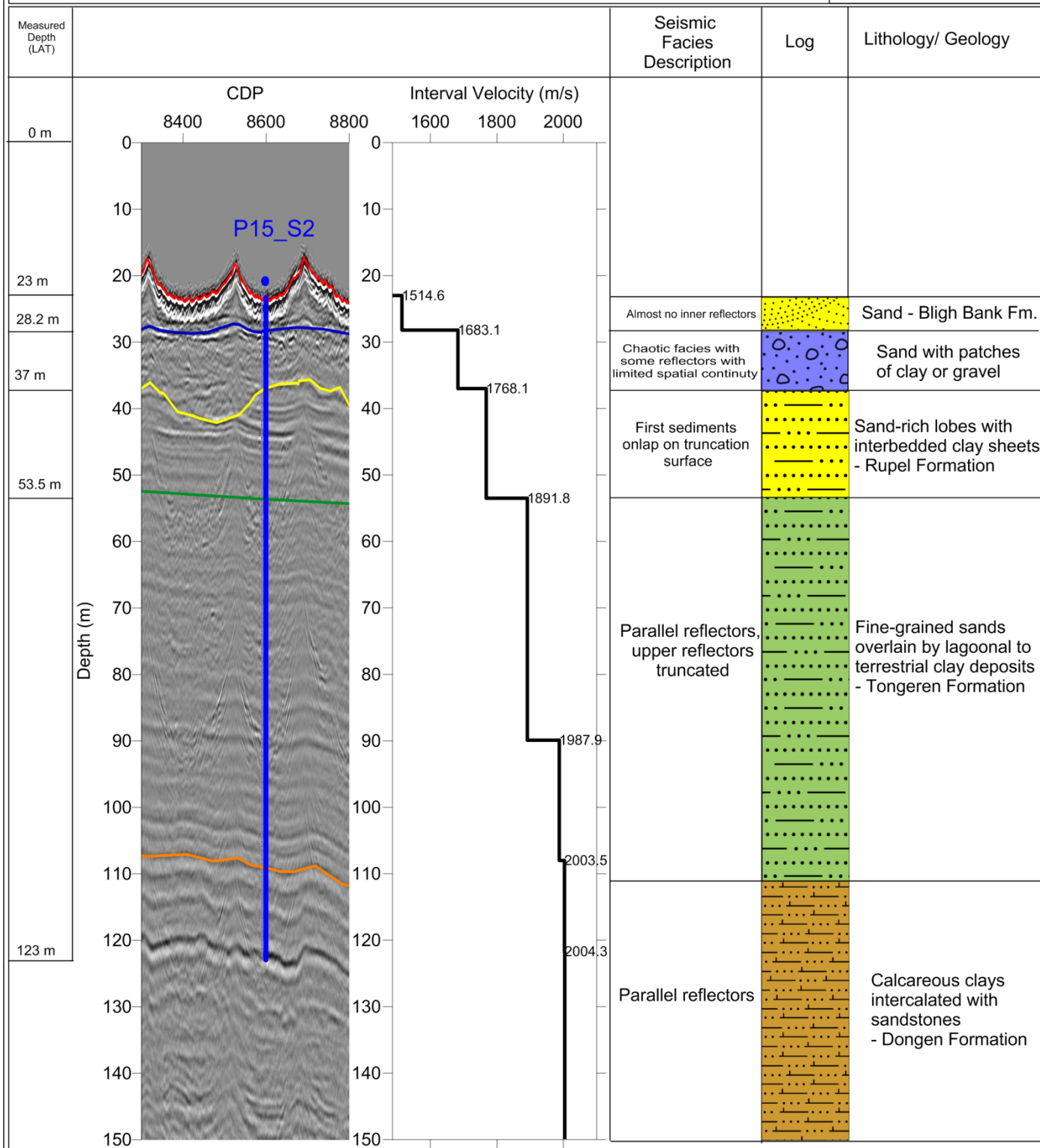


Borehole Plan P15_S2

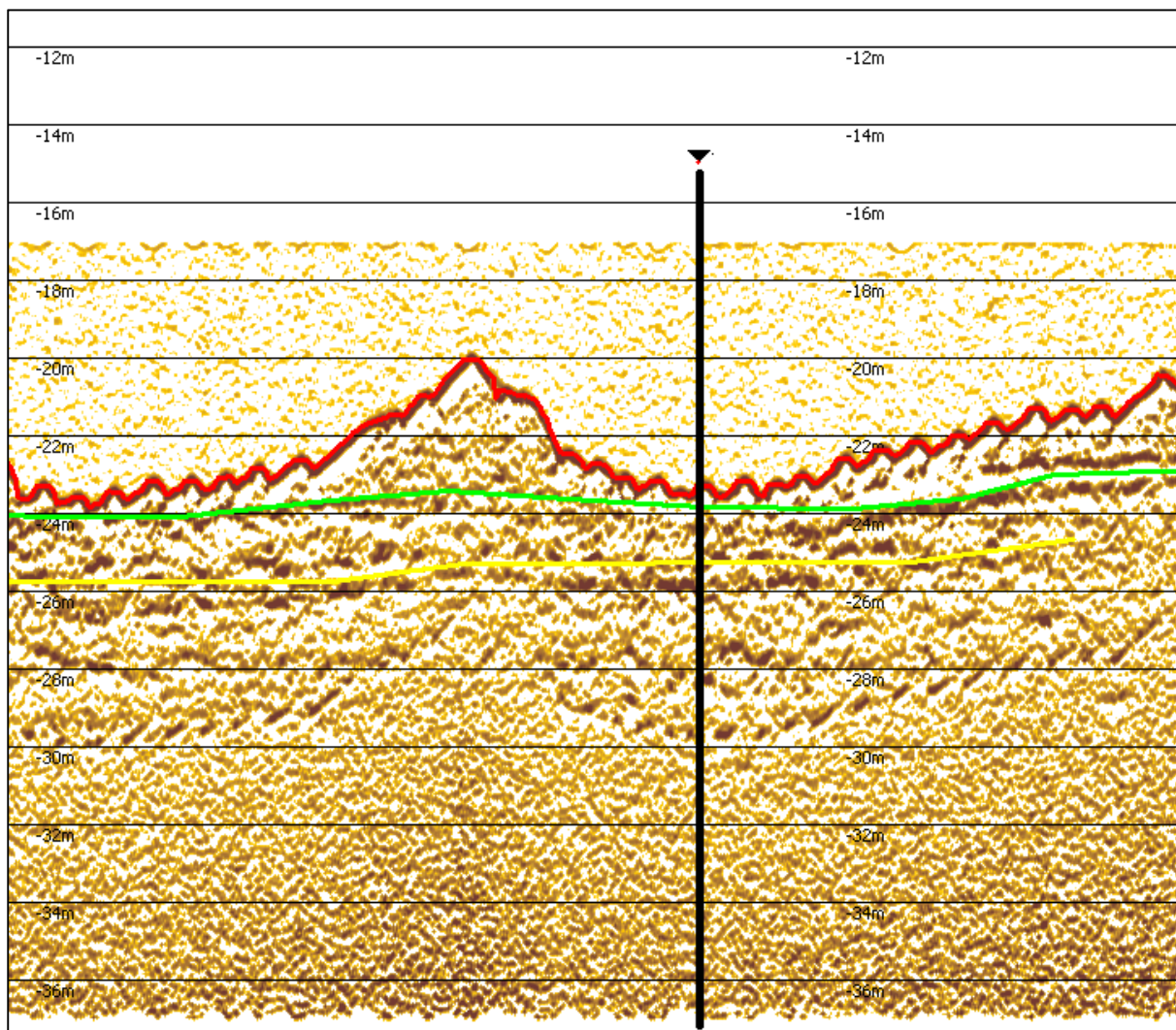
Page 2: Prognosis

PROJECT: Borssele Wind Farm Geophysical Survey

SURFACE CO-ORDINATES
PROJECTED: UTM, Z31N, ETRS89 datum
NORTHING (meters): 5723723.44
EASTING (meters): 506052.08
SEISMIC LINE: x-in9200
WATER DEPTH: 23.4 m
TOTAL DEPTH: 123.4 m
Vertical: 1 / 7.5
Horizontal: 1 / 120



PROPOSED BOREHOLE BASED UPON SBP DATA



Surface coordinates in ETRS89, UTM31N

Easting: 505887.12

Northing: 5717328.14

Survey line: 158-15800

Seabed elevation: 23.94m below LAT

Target depth: 5m below seabed

Goal: Assess denser material identified on SBP

Remarks: none